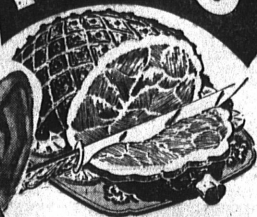


★ GUARANTEED MEATS ★

HERE'S THE TENDEREST STORY EVER TOLD

HAMS

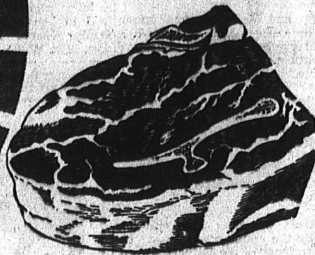


Armour Star-Hormel Dairy
Pearce Ready-to-Eat

SHORT SHANKED
TENDERIZED

FULL SHANK
HALF **53^c**
lb.

CHUCK ROAST



U.S. Govt. Graded
'Good' Steer Beef

Here's the Tenderest Eating Steer
Beef Money Can Buy.

Aged to the Peak of Eating Perfection and
Trimmed of Excess Fat Before Weighing.

NONE HIGHER PRICED

NO MEATY PORTIONS REMOVED

33^c
lb.

MARKET TOWN MEAT
GUARANTEED TO PLEASE OR
DOUBLE YOUR MONEY BACK.

FRESH DRESSED
FRYERS
...how everyone loves em!

PAN READY

2 TO 2 1/2 LB.
AVERAGE **58^c**
lb.



Sliced BACON

MORRELL'S YORKSHIRE or
CUDAHY GOLD COIN

RICH IN FLAVOR
STREAKED WITH PLENTY
OF LEAN **58^c**
lb.

O-BONE ROAST

Cut From U.S. Govt. Good Steer Beef.
Cut to Market Town's standards —
more tender lean meat for your money **43^c**

CORNERED BEEF

Market Town's own exclusive curing process.
Needs no par boiling—never too salty.
Cured just right for that mild
delicious flavor **45^c**

PORK SHOULDERS

Lug's Eastern grain-fed pork. Hook
and excess fat removed before weighing.
An inexpensive roast, that is flavorful
and sure to please **38^c**

PORK STEAKS

Cut from Eastern grain-fed pork. Tender,
lean and meaty. Serve breaded and fry.
The kids just love these with apple sauce **59^c**

BABY BEEF HEARTS

Stuff these with the Family's favorite
dressing and bake. An economical
variety meat that will please everyone **15^c**

LEAN SPARE RIBS

Normell's Eastern grain-fed pork.
Delicious baked or barbecued. So tender
because they're cut from baby porkers **48^c**

BABY BEEF LIVER

Fresh sliced, not frozen. Cut from
baby steer beef. Healthful and
delicious and economical. Serve
with bacon or smothered in onions **39^c**

SWORDFISH

Boneless fillets. Firm flavorful
meat. From the Pacific's coastal
waters. Serve broiled with lemon
butter **59^c**

WHITEFISH

Skinless and boneless fillets. Baked
with tomato sauce or broil and
serve with tartar sauce **39^c**

STOCKTON, CALIFORNIA LARGE NO. 2 1/2

TOMATOES 15^c

YELLOW CLING HALVES — GALE

PEACHES 19^c
NO. 2 1/2
CAN

**BEST FOODS
MAYONNAISE**

FULL
QUART JAR

61^c

**CALIFORNIA TOMATO
JUICE**

JUMBO
46 OZ. CAN

MA PERKINS

17^c

**EASTERN CANNED
BEER**

2 12 OZ.
CANS
PRAGER **25^c**

FAMILY PRIDE
COFFEE

Grind It
Yourself!
Pound bag **73^c**

McEACHEN
SYRUP

2 LB. JAR **26^c**

DELICATESSEN

LUER'S QUALITY

FRANKFURTERS 45^c
lb.

LUER'S FRESH

LIVER SAUSAGE 43^c
lb.

LUER'S QUALITY

SANDWICH LOAF 55^c
lb.

BORDEN'S BISCUITS
SNIDERS CATSUP
FROZEN SOLE
Cranberry SAUCE
DERBY CORNED BEEF
SWEET POTATOES

TALL
CAN **11^c**

2 LARGE
BOTTLES **25^c**

1 LB. CARTON
BUMBLE BEE
SKINLESS FILLETS **39^c**

OCEAN SPRAY
16 OZ. CAN
WHOLE OR JELLIED **21^c**

SQUARE
12 OZ.
CAN **45^c**

TENDER
PACK
No. 2 1/2 CAN **25^c**

ARDEN'S OIL
CREAM CHEESE
DERBY ROAST
KADOTA FIG
LIQUID STEAK
STEAK SAUCE

Van de Kamp's
Specials

Thursday, Friday and Saturday
November 5, 6 and 7

CINNAMON ROLLS 6 for 21^c
(Reg. 6 for 27^c)

ORANGE CHIFFON CAKE 89^c ea.
43^c Half (Reg. 98^c ea.)
Look for the Blue Windmill

LIFEBUOY

Bath Bar 2 for 23^c Reg. Bar 3 for 23^c

LUX FLAKES LGE. BOX **27^c**
LUX SOAP Reg. Bar Bath Bar 3 for 19^c 2 for 19^c
RINSO SUDS LGE. BOX **29^c**
BREEZE SUDS LGE. BOX **30^c**
LIQUID LUX 12 OZ. CAN **37^c**
SPRY SHORTENING 1 LB. CAN **32^c**

ALL PURPOSE DETERGENT

SURE

SAVE **50^c** WITH COUPONS PACKED INSIDE ECONOMY SIZE BOX **59^c**

VET'S BALANCED

DOG FOOD

15 TALL CANS FOR **1**