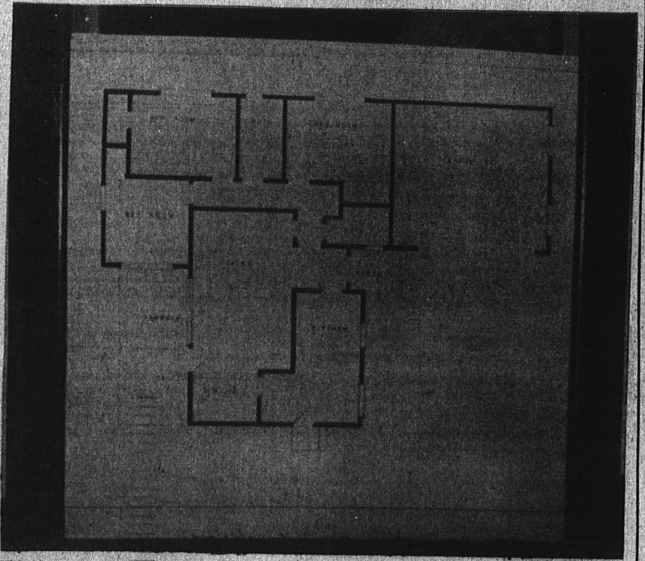


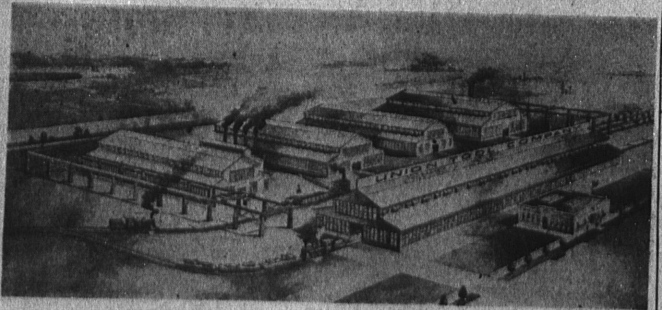
**COOK'S PARADISE . . .** Spacious knotty pine kitchens are a delightful feature of the R. B. Watt Construction Co. homes in North Torrance Gardens now being constructed at 190th St. and Yukon Ave.



**PLANNED FOR EFFICIENCY . . .** The North Torrance Gardens homes now under construction at 190th St. at Yukon Ave. are planned for the maximum of comfort while keeping the housewife in mind. The efficiency of the plan is a high point in its special appeal to women.



**GRACEFUL LINES . . .** The R. W. Watt homes in North Torrance are designed to be a credit to any community. Sales were brisk on the first unit of homes completed in North Torrance, leading the developer to believe he is building what the homeowner wants.



**IT STARTED HERE . . .** This old print shows the first factory set up in Torrance, the old Union Tool Co. This plant is now the National Supply Co., still one of Torrance's leading industries after 41 years. The Union Tool Co. set up shop in the middle of a huge sprawling barley field in 1912 and brought the first workers to Torrance. Since that time, the city has grown by leaps and bounds until the population now exceeds 40,000.

### New Refinery Cracking Unit Ready to Open

Plans to put the new thermo-cracking unit of the Sunset Oil Company's Figueroa plant "on stream" next month were announced this week by Cecil Squire, plant superintendent.

Built during the past year at a cost of approximately \$200,000, the new units will enable the company to produce high grade gasoline stocks to be used as a mixing agent for inferior grade fuels, company officials say.

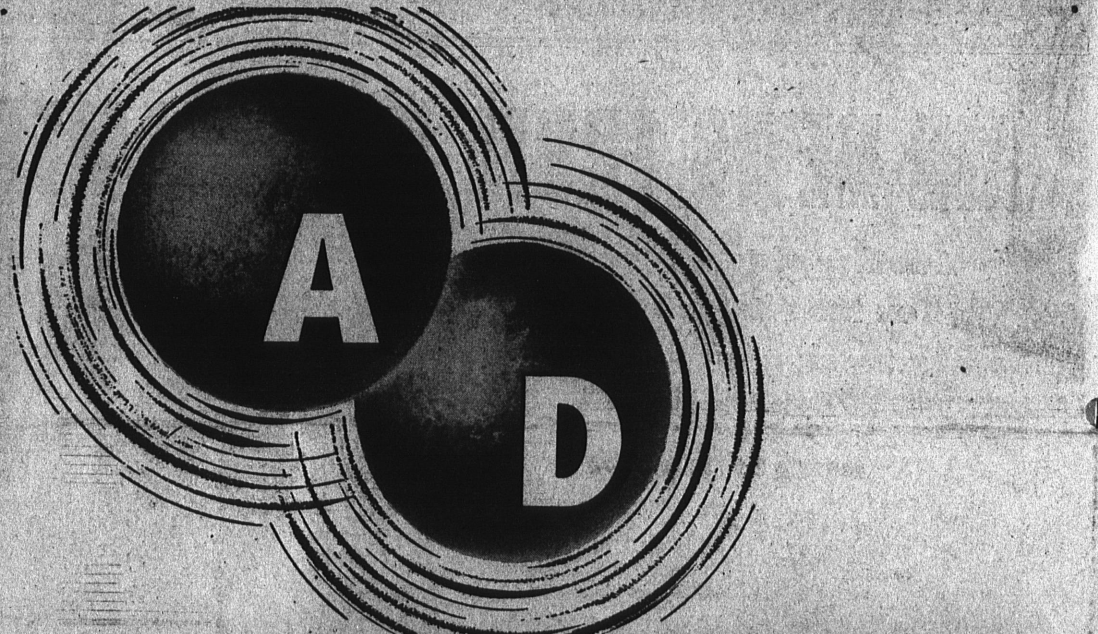
The new units were started last year and were expected to be completed earlier this year. Delays have postponed the operation of the expanded facilities until now.

The cracking and polymerization plant is equipped to produce high grade fuels from low grade distillates.

Included in the new thermo-cracking unit is one 60-foot tower, a 40-foot tower, and lesser units.

The thermal-cracking unit will have a capacity of 3000 barrels daily and the polymerization plant is set up to produce about 100 barrels daily.

The Sunset Oil Refinery is the producer of Golden Eagle gasoline.



## NOW, TEST THE GASOLINE MADE FOR *Automatic Drive*

**YOU KNOW IT'S TRUE . . .** the engine that powers your automatic-drive car—whatever make—whatever model—is far different from the engine in the gearshift car you used to own. *Its horsepower is stepped way up! Its compression ratio is stepped way up! It is a powerhouse of an engine that dwarfs its antecedents!* And any automotive engineer will tell you honestly—to perform to the potential engineered and built into it, your higher horsepower automatic-drive engine with its advanced spark build-up demands a special higher octane fuel capable of withstanding far greater compressions.

**A GREAT NEW MOTOR FUEL.** To meet the demands of these mighty modern engines, the engineers of Golden Eagle have now "built" a great new motor fuel. It is called Golden Eagle A\*D—the first fuel ever designed, engineered and built for automatic-drive engines. We challenge you to test this great new motor fuel—and discover for yourself the wonderful benefits it brings.

**GOLDEN EAGLE A\*D ALONE GIVES ALL THIS:** 1. MORE MILES TO THE DOLLAR. Golden Eagle A\*D brings you new automatic-driving economy . . . it is guaranteed to give you more miles for your gasoline dollar. 2. MORE POWER FROM YOUR ENGINE. Golden Eagle A\*D has a higher octane rating . . . and it

holds a higher rating at increased speeds. 3. NO KNOCK, NO PING, NO MISS. Golden Eagle A\*D is a matchless blend of highest test gasoline, Ethyl anti-knock and newly developed additives. A\*D sparks into power instantly, evenly and completely. 4. INSTANT STARTS, GALLOPING GETAWAY, POWER TO PASS AND PREVENTS ENGINE STALL. Golden Eagle A\*D is "rated right" for the automatic advanced spark build-up peculiar to automatic-drive engines. 5. CUTS FRICTION TO A MINIMUM. Golden Eagle A\*D alone is treated with Thermo-Lube . . . the revolutionary friction-proofing, upper-cylinder lubricant that gives you maximum power from both fuel and engine.

**MAKE THE A\*D TEST.** Today, we challenge you—test Golden Eagle A\*D for one week. Our engineers believe it to be the finest motor fuel ever developed—the ideal gasoline for all automatic-drive cars. Golden Eagle A\*D—and only Golden Eagle A\*D—brings you greater power, finer engine performance—and more miles to the dollar. Drive in the handy yellow and black Golden Eagle station—see for yourself what the West's greatest independent has done to bring you a new day in automatic-driving pleasure. "Fill 'er up with Golden Eagle A\*D—first for automatic drive—and go-go-go-go-go."

NOTE: GEARSHIFT AND SPORTS CAR OWNERS. Have your mechanic advance your spark to maximum. Then you, too, can use GOLDEN EAGLE A\*D—and get more power without knock, ping or miss—and more miles to the dollar.

