

# Creative Family Living

By Dorothy L. Law



COUNSELOR,  
LECTURER,  
INSTRUCTOR IN  
FAMILY  
LIFE EDUCATION

**THE ADOLESCENT** (last in a series on patterns of child growth and development).

The period of life between the ages of 13 and 18 is the time when the yet-developing youth has some of the most crucial decisions of his lifetime to make . . . yes, even before he is completely matured, major decisions are to be made that can and do affect him into adulthood.

Between 16 and 18, when he must begin to make decisions regarding his type of life work, etc., is especially important. The period between 18 and 22 roughly is considered that of the young adult; here is where wise adolescent guidance can reflect.

**TEEN-AGERS DON'T CHANGE OVERNIGHT**  
The youngster entering to adolescence is not going to change overnight!

I have heard moaning and groaning comments from fearful parents, "oh, I just dread the adolescent period," etc. Remember, your child's basic pattern may be intensified one way or another, but it is not going to change into a completely new one. If you have had difficulties in child guidance throughout the years in one area, or another, you will probably continue to work on perhaps many of the same problems, and a few new ones, rising out of new experiences and new growth levels.

### HELP CHILD EXPRESS FEELINGS

What appears to be a radical change can present itself, however, in the more or less inhibited or repressed type of child (the overly compliant pattern who tends to keep resentment and rebellion inwardly). He can begin to release these feelings during the adolescent period, and because he had ordinarily kept much of this material to himself appears to have "changed completely."

Nothing new has been added, however, only the means of communication (which by the way, if they had been established in healthy ways throughout the earlier periods of development would not take this form of apparent "rebellion.")

The child whose parents recognize and assist him to evaluate his more or less unacceptable feelings throughout the years, help him to avoid this "bottling up" process as it might be called.

Remember, part of guiding the child to face reality means helping him to learn to live with himself. One's inner feelings are very much a part of the world in which he lives, since it is from them that a major part of his objective behavior stems.

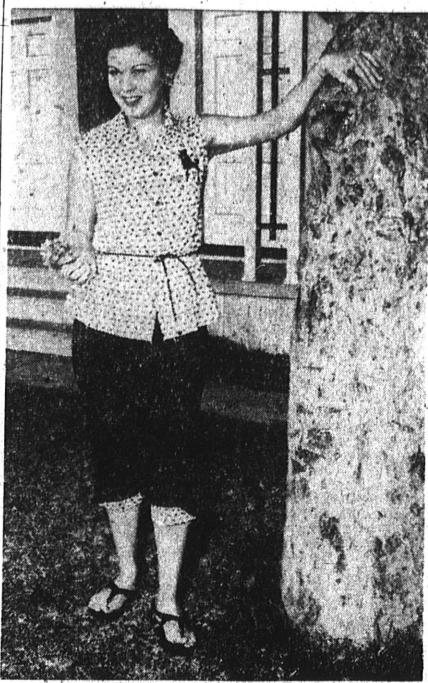
### PHYSICAL GROWTH RAPID

This period of life brings many physical changes in the youth's body, both inwardly and outwardly. The girl of course tends to reach maturity more rapidly than the boy, in many cases. Puberty brings with it changes in the outer physical structure as well as the inner glandular function, etc. Every boy and girl are ENTITLED to be aware of these changes in advance of their appearance.

Instruction in hygiene of the physical self is a must and most adolescents want and ask for it. Please don't label your adolescent "clumsy" or refer to this as the "awkward" age. It is true their bodies are growing so rapidly they can at times barely keep up; it will pass but the label won't.

Some teenagers have difficulty with skin disturbances which in the majority have been found to stem from inner emotional disturbance. However, don't allow a skin condition to progress to the place where it creates more feeling of insecurity, etc. Do check with your family doctor for his suggestions early enough to really benefit from them.

Once again good old soap and water can do a lot toward keeping a healthy skin. By all means talk balanced diet over with your teen-agers; help them to become aware of their bodies' needs for sleep, exercise, proper hygiene, etc.



**SUMMER FASHIONS** . . . Striking a nonchalant pose in gay pedal pushers with blouse matching the trim on the trouser cuffs is Jerrie (Mrs. Robert) Bowers (top photo). Ready for an afternoon's shopping (lower photo) in casual cottons complete with gay underslips are Joan Davis (seated) and Dottie Campbell. Styles are among many to be modeled tomorrow night at a show sponsored by Beta Sigma Phi, Theta Nu Chapter. (Herald photo)

## List Models For Sorority Fashion Show

Both club members and professional models will display summer fashions from The Sport Shop tomorrow night when Theta Nu Chapter of Beta Sigma Phi stages its annual style show at 1215 Crenshaw Blvd. at 8:15 o'clock.

Local sorority members who will model are Miss Ann Kloss, Joan Davis, Dottie Campbell, Mesdames Robert Bowers, Vincent Geiger, Jack Morrison, Gene Stirling, and Harold Roberts. Marilyn Lord, instructor at a professional modeling school in Hollywood, will be the commentator.

Styles to be shown range from shorts and pedal pushers to casual cottons and cocktail costumes. Summer flowers will set the decorative motif, and refreshments will be served during intermission.

Tickets at 75 cents each may be purchased by calling Mrs. Roberts at FAirfax 8-7240 or any of the members.

## Mrs. H. Percy Named Prexy Of JayCettes

JayCettes named Helen (Mrs. Howard) Percy as their new president at a special election meeting in the Chamber of Commerce Building last Tuesday night.

The new leader will have at her right hand Grayce (Mrs. Fred) Hansen, vice-president, while others assisting her will be Ann (Mrs. V. T.) Lovelady, secretary; Jean (Mrs. Chuck) Herren, treasurer; and Lorraine (Mrs. Dale) Stanton, liaison director.

Plans for installation, to be held jointly with the JayCees on July 10 at the Palos Verdes Country Club, will be made Tuesday, June 8, when the executive board meets at the 2054 Reynolds Dr. home of Mrs. Gordon Jones.

Highlights of the meeting preceding the special session were the naming of Mesdames Jones, Percy, and Robert Johnston to select a club candidate for the queen of the "Community Fair" and the welcoming of six new members Mesdames Jack Smith, Keith Pischell, Fred Gartrell, Betty Rapstad, Adrienne Ford, and Loretta Stanton.

# The Social World

AGNES BOLTER, Editor



**FRIENDSHIP CHAIN** . . . links 1954-55 leaders of the Torrance Business and Professional Club, left to right, Virginia Beck, president; Jackie Trenholm, recording secretary; Molly Marshall, first vice-president; Ellen Blackshere, treasurer; Betty Massie, corresponding secretary; Muriel Whiting, second vice-president; and Frances Lee, auditor. (Herald photo)

## Seaside Boys Friendship Chain Themes Do 'Good Deed' BPW Installation Rites

When most little boys their age were thinking about a swim last sunny Saturday, three tots in Seaside Ranchos were doing their good deed for the day.

Nine-year-old Bruce Shockeney, 23031 Doris Way, commanded his seven-year-old brother, Brent, and six-year-old playmate, Kenny Hyder, 23027 Doris Way, for a walk around the neighborhood collecting for the Cerebral Palsy Drive.

The lads got coins and bills amounting to \$21.20 during their three-hour campaign.

Using a chain of friendship as her theme, Lily Anthony, BPW Harbor section chairman for 1954-55, installed new leaders of the Business and Professional Women's Club of Torrance at a dinner meeting at the Palos Verdes Country Club Monday night.

"As each officer is linked together," the chairman said, "the club is bound together in close fellowship, but if one link is weak, the chain is not as strong as it might be. Therefore it is important that each officer do her part to the best of her ability, making the chain indestructible."

As each new leader was escorted into position by her immediate predecessor, Irene Burkett, junior past president of the Los Angeles Sierra Mar District,

presented each with a gold link to the chain. She then escorted Virginia Beck, president for a second term, to the center of the chain, binding the whole together with her leadership.

Taking their places in the "circle of friendship" were Molly Marshall, first vice-president; Muriel Whiting, second vice-president; Jackie Trenholm, recording secretary; Betty Massie, corresponding secretary; Ellen Blackshere, treasurer; and Frances Lee, auditor.

Rites followed the pledge of allegiance led by Emma Roberts, invocation by Lucille Stroh, and introduction of guests by the president and members. Included on the guest list was Mayor Nick Draie.

Table decorations carried out the friendship theme, with green and gold circlets linked together to form a chain down the center. Each member received a gold bracelet made up of small links symbolizing her part in the club. Disclosure of "whosti" pals climaxed the evening.

## San Pedro Club Fetes Local Women

Three women of Palos Verdes and one of Lomita were welcomed into the Assistance League of San Pedro last week at the annual membership tea at the clubhouse.

Entering as associate members were Mesdames Donald B. Armstrong and Sidney Aylward, both of Palos Verdes, while becoming provisional members were Mesdames John R. Amundson of Palos Verdes and Henry Rowe of Lomita.

Other associates honored were Mesdames Arnold Ecklund, William Brocklebank, Blanche Cleveland, Frank Hainline, Elmer L. Higgs, John Karmelich, John A. Korshals, S. H. Lilley, Richard Mitchell, Joseph Mudry, and W. Wesley Wilson, all of San Pedro. Mesdames Robert Bonner of Miraleste and Kristian Jensen of San Pedro completed provisional ranks.

The fireplace arrangement of two antique chairs with lamp tables, each with an antique lamp, added to the informal warmth of the club-room for the occasion. The long tea table, festive with a large bouquet of yellow tea roses and maidenhair fern, with white candles surrounded by gardenias, was the handiwork of Mrs. E. H. Davis, who also served as chairman for tea arrangements. Small tables scattered throughout the room were gay with center bouquets of the same motif, yellow roses and fern.



**BON VOYAGE** . . . Miss Ethel Miretti of San Pedro, who is leaving for an extended tour of Europe by plane next Saturday, June 5, admires a gift of lingerie presented to her by four hostesses at a farewell party last Saturday, left to right, Misses Carol Armstrong, Kathleen Carroll, Marilyn Revell, and Christine Randow. Classmates of the honoree, a sophomore at Marymount College, attended the event, held at the 1633 Juniper Ave. home of Miss Armstrong. (Herald photo)

## Silver Plane Sets Motif At Bon Voyage Fete Here

A silver plane piled high with gifts took the center of attraction at the 1633 Juniper St. home of Miss Carol Armstrong Saturday evening when she hosted a farewell party for a Marymount College classmate, Miss Ethel Miretti.

Miss Miretti is leaving by plane next Saturday, June 5, for an extended tour of Europe, with plans to visit Italy, France, the Netherlands, and Spain. Souvenir gifts from these countries also formed a part of the decorative scheme at the bon voyage event, with Miss Marilyn Revell of Torrance and Misses Christine Randow and Kathleen Carroll of San Pedro assisting Miss Armstrong with arrangements.

A tiny silver plane suspended from a chandelier over the buffet dinner table also added to the travel motif. Sharing in the fun, in addition to the hostesses and the honoree, were Marymount College classmates, Misses Nancy Vierhaus of Torrance; Jossie Puetz of Hollywood Riviera; Carolee Glenn of Rolling Hills; Mary Ann Desmond and Sheila McGee of Palos Verdes; Lynell Moore and Joan Arden of Redondo Beach; Francis Case of Hermosa Beach; Jeannet Osborn and Judy Kuhlman of Long Beach; and Diane Manqueros, Louise Kraebel, Dolores Frol-

## Installation Set By Senior Club

Mrs. Raymond Rogers will take the gavel symbolizing her presidency of the Torrance Woman's Club next Wednesday, June 2, when installation ceremonies are conducted at the Clubhouse, 1422 Engracia Ave., following a 12:30 p.m. luncheon. Conducting the rites will be Mrs. B. T. Whitney, past president and a past district officer of the Los Angeles CFWC, assisted by Mrs. S. V. Rauss, also a past president.

Rich Marie Vitco, and Claudette Bell of San Pedro. Misses Catherine Carter and Virginia Benziger, Marymount teachers, also attended.

## Mrs. Ecklund New President Of Harbor YW

Mrs. Arnold Ecklund, former area membership chairman and vice president of the YWCA, is the new president of the Board of Directors of the Harbor Area Association.

Elected at the May board meeting, Mrs. Ecklund has been active in the Association for the past four years. In addition to serving as membership chairman, she has for the past three years been chairman of the Annual Meeting Committee. She also has assisted with program planning, personnel, teen-age, and nationalities interest committees as well as helping at Electors' Assemblies, Christmas programs, and Y-Week committee.

She will succeed Mrs. C. R. Halfonny, who has served the area as president for the past three years.

Serving with Mrs. Ecklund this year will be Mesdames Alonzo Hurley, first vice-president; Harold Larmer, second vice-president; Lee Stamps, third vice-president; Edith Carragher, secretary; and Miss Edna Whitlow, treasurer.

Members of the board named for a three-year term include Mesdames Elouise La Petra, J. H. Monahan, Hurley, Harold Essert, Robert Sharp, E. C. Spires, Stamps, and Miss Helen Rose. New leaders will take office at the June meeting of the organization.



**IN MEMORIAM** . . . Parceling out poppies which the American Legion Auxiliary, Bert B. Crossland Unit 170, will sell on downtown streets tomorrow and Saturday are, left to right, Tania (Mrs. John) Grobosky; Mrs. Mabel Williams; Gertrude (Mrs. Pat) Boyle; Persia (Mrs. John) Fess; and Alice (Mrs. George) Thompson, chairman of the philanthropy project. All funds raised will be used for relief work among World War I and II and the Korean War veterans and their families. Volunteer salespeople, in addition to those listed in Sunday's Herald are Mrs. Barbara Crewe and Fred Boecher, caretaker at the Legion Hall. (Herald photo)