

### Plan To Resubmit Bond Issue For PV Classrooms

The Palos Verdes Elementary School District will attempt to get voters to approve a \$115,000 school bond issue again early next year, N. D. Myers, superintendent of the district, announced recently.

In a bond election held Nov. 10, the issue failed to get the necessary two-thirds majority.

The second election probably will be called for mid-February, since the law requires that a three-month period must elapse before another bond issue can be called after one has failed, the Palos Verdes election could not come much sooner than February.

#### High School Falls

A proposal to form a high school district in the Palos Verdes area also failed at the November election. Under a new ruling, no more students from Palos Verdes can enter Redondo Union High School. This leaves Palos Verdes students without a high school to attend.

Although Palos Verdes is in the Los Angeles City School District, approximately 1000 of its students have been attending Redondo High on permit. Redondo officials told the Palos Verdes parents recently that Redondo needs the room for its own students.

#### Torrance Says No

Torrance school officials also have informed Palos Verdes not to look toward Torrance High School for class space, since the school is already crowded.

Passage of the proposed bond issue would make the Palos Verdes school system eligible for about \$200,000 in state aid.

No plans have been made by the Board of Education for re-submission of the proposal to form a high school district.

#### Funds Needed Badly

The bond issue and the state funds are needed badly for construction of additional elementary classrooms to house the ever-increasing student population in the area, which includes the communities of Rolling Hills, Malibu, Dapplegray, and Portuguese Bend.

Resubmission of the bond issue to the voters was urged by a group of residents, headed by Robert D. Fisher.

It is believed that high school students in the area will attend Narbonne or San Pedro high schools next year.

**SOUTH BAY  
HEADQUARTERS  
ROGER BACON  
BRITISH CARS**  
M. G.  
AUSTIN  
MORRIS  
ROVER  
HILLMAN  
SUNBEAM  
Austin-Healy  
Sales &  
Service  
**B-B CAR SALES**  
700 Pacific Coast Hwy.  
Hermosa Beach

## Need Money?

see Personal

CASH YOU GET	Pick Your Own Payments
	15 Mo. Plan 24 Mo. Plan
\$100	\$ 8.10 \$ 5.61
\$300	23.85 16.36
\$600	47.11 32.14

At Personal, it's "yes" promptly to 4 out of 5 employed men and women—married or single. Personal and its affiliated companies serve over a million customers each year in over 800 offices throughout U. S. and Canada. Phone first for a 1-visit loan. Come in or write Personal today!

Loans  
\$25 to \$2000

**Personal FINANCE COMPANY**

Grd. Fl., 1441 MARCELINA AVE.  
Phone: FA 9135 8242 • Torrance  
Lloyd H. Peterson, VES Manager  
Loans made to residents of all surrounding towns

OPEN SATURDAYS until NOON  
NOV. 28 to DEC. 19



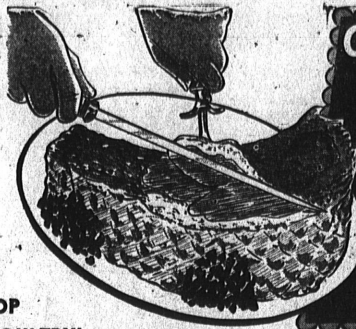
## What's Your Pleasure In MEATS? Steak or Ham... Poultry or Lamb?

Whatever It Is, You're Sure To Get It Juicy—Good, Tasty and

Tender At

# Jim Dandy

BECAUSE



Cut Yourself In  
On These  
**SPECIAL  
MEAT  
VALUES**

WE CARRY ONLY THE TOP  
GRADES OF MEAT AND POULTRY!

So don't delay—stop in today—and cut yourself in on the special meat values that fill our cases. Whatever you pick—you'll pick a winner for dinner—a meat-treat the family will cheer with "Ah-h's" and "Mm-m's".

FINE FOR STEWING OR FRICASSEE — CUT-UP — PAN-READY

**COLORED HENS . . . . . 39<sup>¢</sup> lb.**

LEAN MEATY — DELICIOUS BAKED OR BARBECUED

**SPARERIBS . . . . . 49<sup>¢</sup> lb.**

SWIFT'S PREMIUM

**SLICED BACON . . . . . 75<sup>¢</sup> lb.**

U.S. GOVT. GRADED "GOOD" STEER BEEF  
**ROUND STEAK 65<sup>¢</sup> lb.**

MORRELL'S YORKSHIRE  
**SLICED BACON 59<sup>¢</sup> lb.**

U.S. GOVT. GRADED "GOOD" STEER BEEF  
**RUMP ROAST 57<sup>¢</sup> lb.**

FRESH LEAN  
**GROUND BEEF 33<sup>¢</sup> lb.**

U.S. GOVT. GRADED "COMMERCIAL" BUDGET BEEF  
**ROUND STEAK 57<sup>¢</sup> lb.**

NORTHERN DEEP SEA FILLET  
**SEA BASS 49<sup>¢</sup> lb.**

U.S. GOVT. GRADED "COMMERCIAL" BUDGET BEEF  
**RUMP ROAST 49<sup>¢</sup> lb.**

FRESH RED NORTHERN  
**Salmon Steaks 59<sup>¢</sup> lb.**

New Process—  
**NIBLETS 2 for 33<sup>¢</sup>**  
Corn Off the Cob 12-oz. Can

Doles Fancy Sliced No. 2 Size Can  
**PINEAPPLE 27<sup>¢</sup>**

Libby's—Gentle Press Jumbo 46-oz. Can  
**Tomato Juice 24<sup>¢</sup>**

Pillsbury's Best  
**CAKE MIX 33<sup>¢</sup>**  
Choc. Fudge, White & Gold 17-oz. Box

Pillsbury's Best Family 10-lb. Sack  
**FLOUR 51<sup>¢</sup> 98<sup>¢</sup>**

Dennison's Fancy Tomato 14-oz. Bottle  
**CATSUP 13<sup>¢</sup>**

Sunshine Chocolate-Covered Pound Box  
**CHERRIES 59<sup>¢</sup>**

**Chalet** golden CHEESE FOOD Easy on Your Food Budget 2 LBS. 79<sup>¢</sup>

Date Concord 12-oz. Jar  
**GRAPE JELLY 23<sup>¢</sup>**

Big Sweet Thin Skin Tall Can  
**GREEN GIANT PEAS 20<sup>¢</sup>**

Dennison's—(with Beans) No. 1 Tall Can  
**CHILI CON CARNE 29<sup>¢</sup>**

Scudder's—Smooth or Crunchy 14-oz. Jar  
**PEANUT BUTTER 37<sup>¢</sup>**

Tempting Pound Box 27<sup>¢</sup>

Weston—Westwood Oranges 33<sup>¢</sup>

Cuddley's 16-oz. Can 40<sup>¢</sup>

Quick Cooking 8-oz. Box 2 for 25<sup>¢</sup>

Gerber's 3 for 25<sup>¢</sup>

Victor—Small 1-oz. Can 45<sup>¢</sup>

4-Ball Family Pack 35<sup>¢</sup>

M.J.B. Black 48 Boxes 55<sup>¢</sup>

Cat Food 2 for 25<sup>¢</sup>

Dovee 3 for 25<sup>¢</sup>

Dandrant 2 for 23<sup>¢</sup>

Self-Polishing 1 Quart \$1.09

**Frozen Foods**

BIRDSEYE MIXED VEGETABLES 10-oz. Box 13<sup>¢</sup>

BIRDSEYE Peas & Carrots 10-oz. Box 13<sup>¢</sup>

Ocoma Frying Chicken BREASTS 12-oz. Box 80<sup>¢</sup>

Quick Snack or Man-Stead Meal!

STAR KIST 61-oz. Can  
**CHUNK TUNA 30<sup>¢</sup>**

Laura Scudder Pint Jar  
**MAYONNAISE 36<sup>¢</sup>**

America's Finest Pint 33¢—Quart  
**WESSON OIL 64<sup>¢</sup>**

Pillsbury's Best 9 1/2-oz. Box  
**PIE CRUST 17<sup>¢</sup>**

Pillsbury's Best 40-oz. Box  
**PANCAKE MIX 32<sup>¢</sup>**

Pillsbury's Best 14 1/2-oz. Box  
**HOT ROLL MIX 25<sup>¢</sup>**

Drinking Water Half-gallon Bottle  
**SPARKLETT'S 2 for 39<sup>¢</sup>**

Try Brighter-White  
**BAB-O 2 Cans for 23<sup>¢</sup>**

**WHITE KING SOAP** GET THE REAL THING  
Large — 29¢ Giant 54¢

CONSERVE YOUR LINENS!  
PROTECT FAMILY HEALTH!  
**CLOROX**  
BLEACHES - REMOVES STAINS  
DEODORIZES - DISINFECTS  
1/2 Gal. 27<sup>¢</sup>

SWIFT'S PREMIUM 1-lb. Cello Pkg.  
**FRANKS 45<sup>¢</sup>**

SWIFT'S FARM STYLE 1/2-lb. PKG.  
**SUMMER SAUSAGE 39<sup>¢</sup> lb.**

MILD  
**LONGHORN CHEESE 49<sup>¢</sup> lb.**

**Our Careful Buying  
Brings YOU the  
BEST PRODUCE  
BUYS**

We're as picky and choosy as you are. Every item must measure up fully to our high standards. We examine and compare. Because we buy carefully... because we buy the best... you always get the best.

FANCY CENTRAL AMERICAN  
**BANANAS 2 LBS. 25<sup>¢</sup>**

FANCY RED-CHEEKED ROME BEAUTY  
**APPLES... 3 LBS. 25<sup>¢</sup>**

LARGE SIZE FANCY-GRADE PUERTO  
**AVOCADOS... 17<sup>¢</sup>**

NEW CROP! DEELET NOOR—BIG 3-LB. MAILING BOX  
**DATES 77<sup>¢</sup>**

"A Perfect Gift for the Falls Back Home"

# Jim Dandy MARKETS

2515 TORRANCE BLVD., Torrance  
1516 Pacific Coast Highway, Redondo Beach

Store Hours: 9 A.M. to 10 P.M. Daily  
Limit Rights Reserved — You Added to Trouble Home  
PRICES EFFECTIVE THURS., FRI., SAT., SUN., DEC. 3, 4, 5, 6