



**SPECIAL AWARDS** . . . Besides bonus awards, the Longren Aircraft Co. gave special ten-year awards to (left to right) A. K. Peterson, Wendell Walker, Virgil Sackman, and Max Pier. Managing Director Hampden Wentworth is presenting the awards. Later, Production Manager Pier turned around and gave a 10-year service pin to Wentworth.

**\$18,000 In Bonuses Given To 250 Longren Aircrafters**

Bonus checks totaling \$18,000 were distributed to the 250 personnel of Longren Aircraft Co., and 43 employees received service awards at the aircraft firm's regular quarterly Family Bonus Party at the Veterans of Foreign Wars Memorial Hall in Gardena, Saturday night. More than 500 Longren employees and family members attended.

Longren Aircraft Co. has achieved widespread national recognition for the industrial relations program and employee profit-sharing plan whereby 24 per cent of the aircraft firm's net profits are distributed quarterly. Under the plan, employees receive approximately 12 per cent of their gross annual earnings in the form of quarterly bonuses in addition to their wages.

Before distributing the bonus checks, Managing Director Hampden Wentworth told the Longren employees that better employee cooperation and spirit, is the key to increased productivity. He disclosed that over the last few years Longren Aircraft employees have increased productivity 95.5 per cent and reduced labor turnover by 30 per cent. Wentworth urged redoubling of efforts to achieve a 20 per cent boost in productivity to maintain Longren leadership.

In addition to bonus checks, service pins presented to Longren "associates" included ten-year awards; A. K. Peterson, Special Design Projects; Max Pier, Production Manager; Virgil Sackman, Assistant Production Manager; Wendell Walker, Assistant Industrial Relations Manager. The ten-year service pin was presented by Managing Director Wentworth by Max Pier, Production Manager. Other service awards included eleven 5-year pins and 27 two-year pins. The ceremonies were preceded by a pot-luck dinner and concluded with dancing. Entertainment was provided by Betty Thomas Studio musical and dance group.



**Van de Kamp's Specials**  
May 7, 8, 9

**French Butter ROLLS** . . . 6 for 17¢  
(Reg. 6 for 20¢)



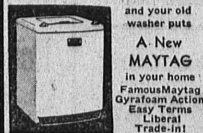
**PECAN ROLLS** . . . 39¢  
(Reg. 49¢ per pan) Pan of 6

Fri., Sat., May 8, 9 Only

**Mother's Day**  
• CAKE . . . \$1.19 ea.  
Fine  
• CHOCOLATES \$1.00 lb.

**Van de Kamp's BAKERIES**  
1506 Cravens St.

**ONE DOLLAR**



**FRANK'S FURNITURE**  
1334 EL PRADO, TORRANCE

**Friends:**

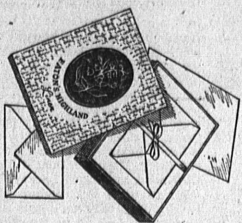
We wish to take this opportunity to thank the people of Torrance for their acceptance of our new Chrysler-Plymouth dealership.

At present we are undersupplied with good used automobiles and due to this fact we are willing to give the people of Torrance a much better trade-in value on their present cars on the purchase of the new 1953 Chryslers and Plymouths.

If you are interested in having a new Chrysler or Plymouth before you start on your summer traveling, please contact JIMMY MACKEY in our Sales Department.

Thank you again for the warm welcome that was extended on our arrival in your town.

Sincerely yours,  
**FRED BRIGGS CHRYSLER-PLYMOUTH**  
1895 Torrance Blvd., Torrance  
Phone Torrance 2976



GIVE A BOX OF STATIONERY FOR MOTHER'S DAY

\$1 per Box . . . FREE GIFT WRAPPED

Eaton's and Montag Stationery makes wonderful gifts for Mother's Day. We have a fine selection for you to choose from.

**YOUR CHOICE \$1.00**  
GIFT WRAPPED—NO CHARGE

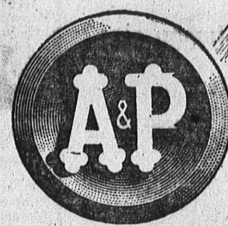
**PARRISH STATIONERS**  
2 DOORS EAST OF POST OFFICE  
1423 MARCELINA TORRANCE 877

**Wholesale LEW THRIFTY TUCKER Retail**  
PHONE FR. 4-0523 204 PACIFIC COAST HWY. HERMOSA BEACH, CALIF.

<b>YEARLING LAMB</b>	
<b>LEGS</b>	<b>39¢ lb</b>
<b>LOIN CHOPS</b>	<b>39¢ lb</b>
<b>PORK SAUSAGE</b>	<i>freshly ground</i> <b>4 lbs. \$1.00</b>
<b>GROUND BEEF</b>	
<b>SKINLESS WIENERS</b>	<b>35¢ lb</b>
<b>TILLAMOOK CHEESE</b>	<b>59¢ lb</b>
<b>STEAKS</b>	<b>49¢ lb</b>
<b>SHOULDER ROAST</b>	<b>25¢ lb</b>
<b>RIB CHOPS</b>	<b>25¢ lb</b>
<b>LARGE BY THE PIECE</b>	<b>BOLOGNA 29¢ lb</b>
<b>SLICED</b>	<b>SALAMI 49¢ lb</b>
<b>ROUND T-BONE</b>	<b>49¢ lb</b>
<b>SWISS RIB</b>	<b>39¢ lb</b>

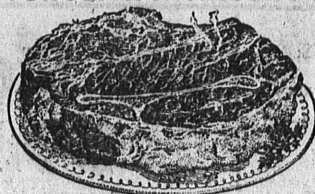
Freezer Meats Bank Terms Freezer Meats

**YOUR FOOD BILLS CAN BE CUT!**



COME SEE AT A&P!

FOR SUPER SAVINGS ON MEATS . . . SELECT A&P's Nationally Advertised Ann Page Foods Can Cut Your Food Bills, Come See . . . Come Save!



U.S. GRADED "CHOICE"

**BEEF ROASTS**

**BLADE CUT CHUCK 33¢ lb.** **CENTER CUT CHUCK 39¢ lb.** **7" CUT RIB ROAST 65¢ lb.**

FANCY HICKORY SMOKED "SUPER-RIGHT" BRAND 6 TO 8 LB. AVG. **PICNICS 42¢ lb.**

U.S. GRADED "CHOICE" **VEAL SALE!**

**SHOULDER ROAST 45¢**  
**SIRLOIN STEAK 79¢**  
**LOIN or RIB CHOPS 83¢**  
**VEAL BREAST 25¢**  
**ROUND STEAK 89¢**  
**GROUND VEAL 49¢**

FRESH LEAN **GROUND BEEF 33¢**  
WILSON'S CERTIFIED **BOLOGNA Sliced 49¢**  
ARMOUR'S STAR—PURE PORK **LUNCHEON LOAF 49¢**  
FILLET PACIFIC **LING COD 33¢**  
NORTHERN **HALIBUT Sliced or Pieced 43¢**

NEW CROP FANCY **PINEAPPLES 33¢ ea.**

WILLIAMS ALL-GREEN **ASPARAGUS 2 lbs. 29¢**

NORTHERN FANCY **Cauliflower 2 HEADS 25¢** FANCY **New Onions 5 lbs. 19¢**

Nature Sweet <b>TOMATO JUICE 2 12-oz. CANS 15¢</b>	Sunnybrook <b>RED SALMON 16-oz. can 71¢</b>	Zee Binner <b>PAPER NAPKINS 48-ct. pkg. 13¢</b>
New Instant-Action <b>BABO CLEANSER 2 14-oz. 25¢</b>	Lint <b>LINIT STARCH 12-oz. pkg. 13¢</b>	Dole <b>PINEAPPLE TIDBITS 14-oz. 18¢</b>
Same Strain <b>SALMON 16-oz. can 59¢</b>	Sunshine <b>HYDROX COOKIES 7 1/2-oz. 25¢</b>	Zee <b>PAPER TOWELS Roll 18¢</b>
Speed <b>BROOMS each 89¢</b>	Armour's <b>DIAL SOAP 2 Reg. 8oz. 33¢</b>	Armour's <b>DIAL SHAMPOO 3 1/2-oz. 67¢</b>
Diamond <b>WAX PAPER 125' roll 23¢</b>	Wilson's <b>BOOK MATCHES 2 1/2-oz. 16¢</b>	Wilson's <b>MOR PORK 1-lb. can 45¢</b>
Wilson's <b>TAMALES For White Clothes 16-oz. pkg. 28¢</b>	Wilson's <b>PIG FEET 9-oz. can 25¢</b>	Argo <b>CORN STARCH 1-lb. 13¢</b>
For White Clothes <b>IVORY SNOW 1-lb. pkg. 29¢</b>	Libby's <b>JOY DETERGENT 7-oz. 30¢</b>	Fisher's <b>BISKIT MIX 3 1/2-oz. 45¢</b>
House <b>CIDER VINEGAR 8-oz. can 24¢</b>	Libby's <b>CORN BEEF 12-oz. can 49¢</b>	Whitehouse <b>MILK 2 1/2-oz. 27¢</b>
Campbell's <b>TOMATO SOUP 10-oz. can 11¢</b>	Libby's <b>CLOES BLEACH 1 1/2-qt. 25¢</b>	

Check the Flavor . . . Check the Price!  
**OUR OWN TEA**  
HEARTY AND VIGOROUS 1-lb. Pkg. **69¢**  
A&P TEAS PROVE FINE TEAS NEEDN'T BE EXPENSIVE . . .

A&P **Grapefruit Sections 2 16-OZ. CANS 33¢**

ANN PAGE **MAYONNAISE**  
RICH BLEND OF FINE SALAD OIL WITH VINEGAR, EGG YOLKS, PURE LEMON JUICE, ARTFULLY SEASONED.  
PT. JAR **27¢**  
Qt. Jar . . . 53¢

ANN PAGE **PEANUT BUTTER**  
RICH GOODNESS OF FRESH-ROASTED PEANUTS. SPREADS SMOOTH, STAYS FRESH LONGER, DOESN'T SEPARATE.  
8-OZ. JAR **21¢**

WISCONSIN MILD **Cheddar Cheese PER LB. 49¢**

ANN PAGE **SPAGHETTI**  
MADE OF #1 SEMOLINA. FINE QUALITY—WHY PAY MORE?  
2 1-lb. Pkg. **33¢**

ANN PAGE **BEANS**  
3 STYLES: IN TOMATO SAUCE WITH PORK • VEGETARIAN STYLE • BOSTON STYLE WITH PORK IN MOLASSES SAUCE.  
16-OZ. CAN **10¢**

ANN PAGE **Red Beans 2 16-OZ. CANS 19¢**

GOOD TASTE **Green Beans 2 16-OZ. CANS 23¢** GOLD MEDAL **Flour 5-LB. PKG. 49¢** BIT O' HONEY. **SUGAR PEAS 2 17-OZ. CANS 25¢**

CHICKEN OF THE SEA **TUNA GREEN 6 1/2-OZ. LABEL CAN 29¢** MINUTE MAID FROZEN **Orange Juice 2 6-OZ. CANS 33¢**

ANN PAGE **CURRENT JELLY 12-OZ. GLASS 25¢** **AP Food Stores**  
THE GREAT ATLANTIC & PACIFIC TEA COMPANY  
Taxable Items Subject to Tax  
PRICES EFFECTIVE IN ALL SOUTHERN CALIFORNIA STORES  
Through Saturday, May 9th  
1830 EL PRADO — TORRANCE