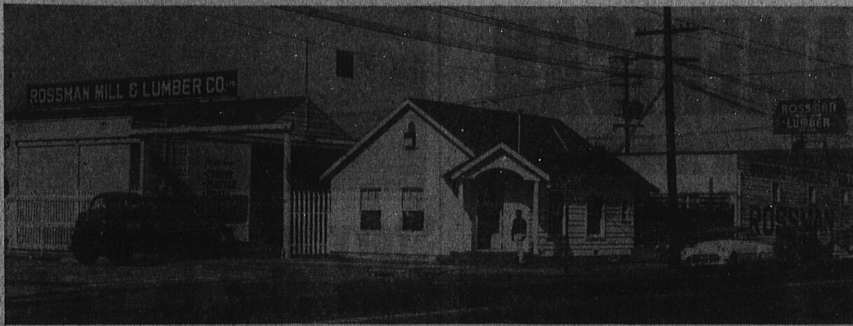


JUST 14 years . . . Some idea of the growth in the area during the past 14 years may be obtained by comparing the two photographs of Torrance's first industry, the National Supply Co., taken just 14 years apart. Not only have the company's facilities been expanded greatly, but the surrounding area—which was largely uninhabited in 1938, is well built up as shown by the photo taken two months ago. Such scenes are typical of the city's growth during the past few years.



TODAY'S PLANT . . . Expanding annually is today's plant of the National Supply Co. which nearly fills the huge site of the original Union Tool Co. Additional expansions valued

in the hundreds of thousands of dollars are still planned for the pioneer Torrance firm.



SERVING AREA . . . Serving the Harbor area are three Rossman Mill and Lumber Co. yards. The yards in Wilmington, Long Beach and San Pedro have contributed millions of feet of lumber and building materials to construction throughout the area during recent years; One of the company's major yards is pictured above. From this plant go material for hundreds of new homes and industries every year.

tion throughout the area during recent years; One of the company's major yards is pictured above. From this plant go material for hundreds of new homes and industries every year.

Without the Union Tool Co., predecessor of the National Supply Co., Torrance might have been a long time in the making. Today the city of more than 40,000 persons can owe its existence to the foresight of Banker Jared Sidney Torrance and officials of the Union Tool Co. Late in 1912, the Union plant was moved to the present location of The National Supply Co. by the company's officials because the plant, then located in Los Angeles, had outgrown its site. National Supply Co. is the world's largest manufacturer and distributor of oil field machinery and equipment. The Torrance plant is one of its Oil Field Machinery divisions, and is the home of ideal drilling equipment. At the present time, the plant is geared to a dual task of supplying the nation's hungry oil field markets and meeting the demands of a nation wanting defense materials. Works manager of the Torrance plant is John D. Spalding.

Union Tool Company City's First Industry

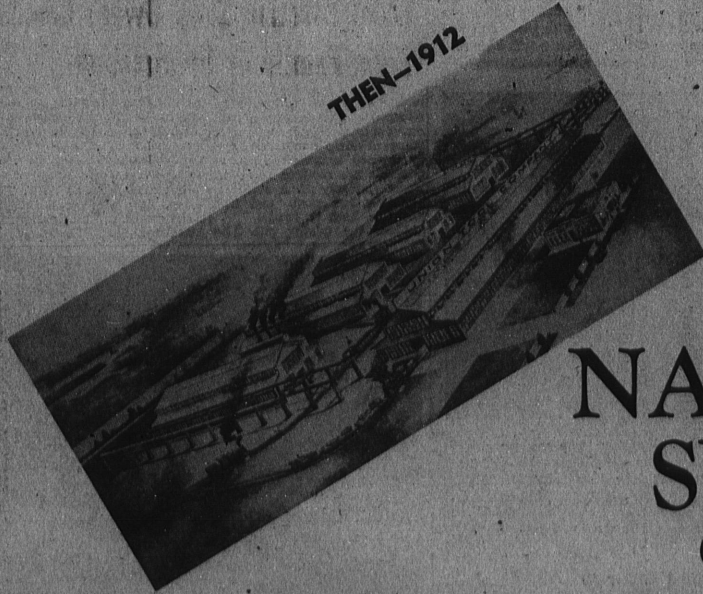


The National Supply Company Salutes the City of Torrance . . .

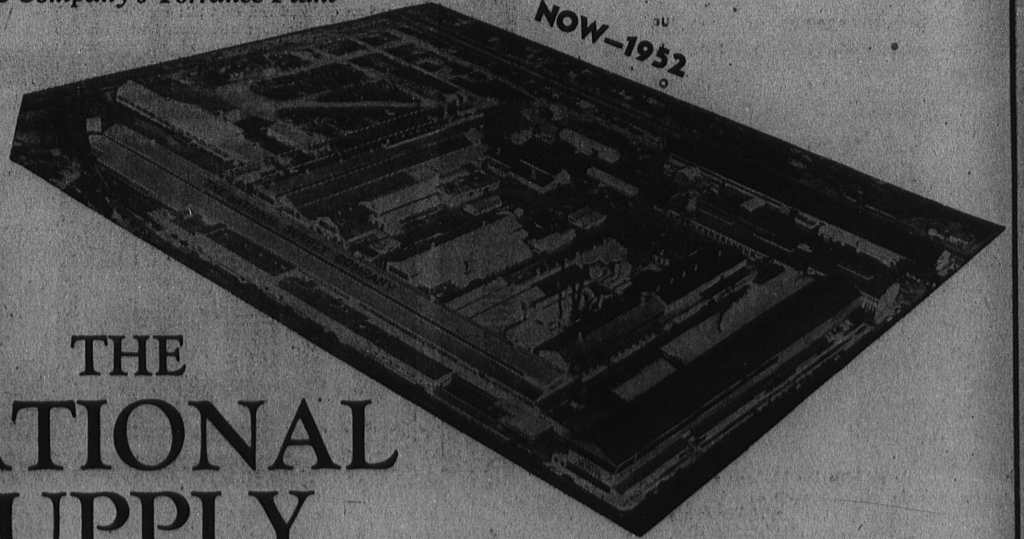
and Observes With Pride and Satisfaction

The Fortieth Anniversary of Both the City

And the Company's Torrance Plant



THEN—1912



NOW—1952

THE NATIONAL SUPPLY COMPANY

TORRANCE, CALIFORNIA