



# 22<sup>nd</sup> ANNIVERSARY

**FREE PRIZES!**  
**21" HOFFMAN CONSOLE TELEVISION SET**  
**25 A&P FOOD BASKETS**  
**2-GE-CLOCK RADIOS**  
**2 - WILSON'S TABLE TENNIS SETS**  
**3-GE-ELECTRIC CLOCKS**  
**3-G. E. ELECTRIC IRONS**

TICKETS ON FREE PRIZES AVAILABLE AT THE STORE



**A&P IS PROUD TO CELEBRATE ITS 22 YEARS IN TORRANCE**  
**A MONTH LONG FESTIVAL FEATURING LOWER FOOD PRICES IS PLANNED TOPPED OFF WITH MANY VALUABLE PRIZES!**

**HOW TO WIN A VALUABLE PRIZE**  
 1-TICKETS ARE GIVEN FREE AT A&P FOOD STORE. NO PURCHASE NECESSARY.  
 2-EMPLOYEES OF A&P AND MEMBERS OF THEIR FAMILIES ARE NOT ELIGIBLE TO PARTICIPATE.  
 3-TO PARTICIPATE, OBTAIN TICKET AT A&P, WRITE NAME AND ADDRESS ON STUB, DEPOSIT IN RECEIPTABLE AT STORE.  
 4-WINNERS DO NOT NEED TO BE PRESENT AT TIME OF DRAWING.  
 5-TICKET STUBS MUST BE DEPOSITED AT A&P STORE BEFORE DRAWING, JULY 26.  
 6-DRAWING WILL BE HELD AT A&P STORE, 2:30 P.M. TUESDAY, JULY 29. YOU DO NOT HAVE TO BE PRESENT AT DRAWING TO WIN. WINNERS WILL BE NOTIFIED.

**GE-VACUUM SWEEPER!**  
 3-WILSON'S BASEBALL GLOVES  
 3-WILSON'S TENNIS RACQUETS

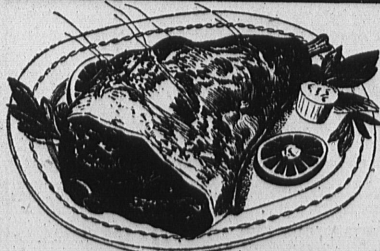
A&P **Grapefruit SECTIONS** 2 No. 303 Cans **29¢**  
 M.D. **TOILET TISSUE** 10 Rolls For **89¢**

Golden 'B' Sweet Heavy Syrup **DARK CHERRIES** No. 2 1/2 Can **29¢**  
 DEL MONTE **Tomato Juice** 46-oz. Can **22¢**

APPLELAND **Applesauce** 2 No. 303 Cans **23¢**  
 IONA **TOMATOES** 3 No. 2 Cans **49¢**

PACIFIC **SODA CRACKERS** 1-lb. Box **19¢**  
 SOME STRIKE **RED SALMON** 1-lb. Can **59¢**

CINCH—Package **Cake Mix** Asstd. Flavors **33¢**  
 LIBBY'S CORNED **Beef Hash** 1-lb. Can **35¢**



**A&P's FAMOUS "SUPER-RIGHT" QUALITY LEG OF LAMB**  
 "Tasty With Baked Potatoes and Green Beans"  
 Whole or Either Half **69¢ lb.**

**LAMB ROAST** Square Cut **59¢ lb.**  
 U. S. GRADED "CHOICE"

**BEEF ROAST** Center Cut Chuck **49¢ lb.**  
 U. S. GRADED "CHOICE"

**BEEF STEAK** Full Cut Round or Swiss **89¢ lb.**

HORMEL'S MINNESOTA **SLICED BACON** 1-lb. Sealed Package **49¢ lb.**  
 GENUINE SPRING **LAMB CHOPS** Large Loin or Rib **89¢ lb.**  
 GENUINE SPRING **LAMB CHOPS** Small Loin **98¢ lb.**  
 HORMEL—Midget Links **PORK SAUSAGE** 1-lb. Package **29¢**

**A&P FRESH FRUITS & VEGETABLES**  
 NOW'S THE TIME FOR CANNING—ELBERTA—FREESTONE  
**PEACHES** App. 22 1/2 lb. Box **1.55**  
 Per Lb. . . . . **7c**

SWEET—RED RIPE—WHOLE OR PIECE  
**WATERMELON** **2 3/4 c lb.**

BIG SIZE—WHITE HEADS  
**CAULIFLOWER** **15¢ EA.**

ANN PAGE—Pint Size **MAYONNAISE** **29¢**  
 WILSON'S **MOR PORK** 12-oz. Can **37¢**

CALO **DOG FOOD** 2 No. 1 Cans **23¢**  
 Hart's Green & White **Limas** 2 No. 303 Can **19¢**

WORLD WIDE—CUT **BEANS GREEN** No. 208 Cans **10¢**  
 SUNNYFIELD—Top Quality **BUTTER** Grade AA **79¢ lb.**

A&P'S—OUR OWN **TEA** 100 Ct. Pkg. **75¢**  
**Purex** 1/2 Gal. Size **27¢**

TAVERN PALE **EASTERN BEER**  
 2 12-oz. Cans **27¢** Case of 12 Cans **\$1.53**

**A&P Super Markets**  
 THE GREAT ATLANTIC AND PACIFIC TEA COMPANY  
 Prices Shown Are Guaranteed Thru Monday, July 14th  
**1333 El Prado -- Torrance**  
 Taxable Items Subject to Tax