

JAX FOOD PLAN FILET MIGNON (RUCHTI BABY BEEF) PHONE 1270

56¢

Ten TORRANCE HERALD MARCH 13, 1952
Torrance Bands Receive Invitation to Review
Invitations to the Torrance Band Review May 3 were Area Youth Band and the Torrance High School Band to participate in the Fifth Annual May National City.

Always Ready To SERVE YOU...

Meats
Groceries
Vegetables

Visit Our Market Today and See for Yourself the Low, Low Prices That Prevail in Every Department. You'll Like the Friendly, Courteous Atmosphere, Too!



CARSON MART

We Reserve the Right to Limit Quantities

1929 CARSON ST. • TORRANCE

PHONE TORRANCE 515

WE CASH PAY ROLL CHECKS

Fleeing Driver Halted By Cops, Wanted By LAPD

When Police Officers R. E. Walker and T. Pattishall tried to flag down a motorist for a traffic violation and he wouldn't stop, it made them a little mad.

But when they finally succeeded in bringing him to a halt and he leaped out of his car and tried to run away—they knew everything wasn't jake.

A check with LAPD revealed that they had a warrant for a person by the same name, Johnny I. Garduna, who had skipped off while under \$500 bail. Harbor detectives took the gent for questioning.

It all happened at 213 W. 203rd St. early Saturday morning.

First Aid Courses On

Standard Red Cross first aid courses are now being conducted at the North Torrance Elementary School and the Torrance High School. The Red Cross announced recently.

The North Torrance class meets Mondays and Wednesdays from 7 to 9 p.m., with Instructor Kenneth Bloomfield.

High school classes meet on Mondays and Thursdays, at the same hours. Marguerite Ferguson is instructor.

"Instruction in the skills and techniques of 'self help' will include material as set forth in the new civil defense supplement, and injuries and their treatment which might be sustained in the event of a disaster are discussed," officials said.

Information for late enrollment can be obtained by calling Torrance 3447.



JERRY BALDWIN
... Gifts For All

Manager Opens Doors Friday

Fellow merchants along Cravens Ave. have doffed their hats in a fond greeting to Crest Furniture who will officially swing open the doors to the public tomorrow in a gala opening celebration starting at 7 p.m.

The newest addition to Torrance's growing list of top mercantile establishments is located at 1413 Cravens Ave., near Post Ave.

"Crest Torrance" is owned by and operated under the direct supervision of Jerry Baldwin, a resident here who has had many years of experience in the furniture business.

After returning from four and a half years in the service, Baldwin and his wife Dorothy Jean moved to Torrance. There are four children, Danny, Dennis, Kathy and Peggy, living at the Baldwin home, 17233 Casimir Ave.

The new store is the 21st member of the West Coast Buying Syndicate, "the friend of the store buyer."

Baldwin has assured that there will be flowers for the ladies and gifts for the kiddies plus entertainment, music and other prizes at the opening festivities tomorrow.

Coral Islanders Signed for Ball

Max Reed and his Coral Islanders orchestra have been signed to play for the El Camino College "Orchid Ball" tomorrow night, according to information from the college.

Featuring Prince Ka Mau Mau, the knife dancer who appeared in the recent motion picture "Soldier Beware," the orchestra will play for the annual dance sponsored by the Associated Women Students of the college.

The Orchid Ball will be held from 9 p.m. to 12:30 a.m. Tickets are on sale in the student bookstore on the local campus. Admission is \$3.

Students who arranged the dance include AWS President Rita Kennedy, 5314 Reese Rd and Annette Castaner, 2411 Border Ave., publicity.

Attendance at last year's dance exceeded 450, according to the AWS board in charge of this year's dance.

CUB PACK PLANS TO BE DISCUSSED

Parents are urged to attend a special meeting sponsored by the Boy Scouts to plan for the organization of Cub Scout troops in this area, it was announced yesterday.

The meet will be held tonight at 7 o'clock in the Hammerton Community Church, Milton St. and Elliot Ave.

TV PRODUCTION

TV receivers comprise 65 per cent of the dollar volume of their output, say radio manufacturers.

93rd

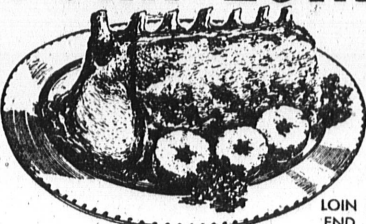
COME HELP US CELEBRATE

Anniversary

93 years ago we established our economical way of doing business, enabling us to give the customers scores and scores of quality-famous foods at truly modest prices. Don't miss this week's values.

FANCY EASTERN GRAIN-FED

PORK LOIN ROAST



BLADE END 43¢ lb.

LOIN END 47¢ lb. CENTER CUT 69¢ lb.

U.S. GRADED "CHOICE" OR "GOOD"

BEEF ROAST BLADE CHUCK 59¢ lb. CENTER CHUCK 63¢ lb. ROUND BONE 69¢ lb.

WILSON'S CERTIFIED SKINNED HAM BUTT END 5-6 lb. Avg. 55¢ lb. SHANK END 7-8 lb. Avg. 43¢ lb. WHOLE OR SHANK HALF HAM ... 53¢ lb.

FANCY EASTERN HAM SLICES CENTER CUT 95¢ 1-lb. SEALED PKG. 37¢ WILSON'S CRISP BACON 1-lb. CELLO PKG. 53¢ WILSON'S CERTIFIED FRANKFURTERS 1-lb. CELLO PKG. 53¢ CATALINA SWORDFISH CENTER CUT 69¢ MEDIUM SIZED SHRIMP For Cocktails Frying or Salads 69¢ FRESH FILLET GOLDEN BASS 63¢

DATES NATURAL DEGLT NOOR 2 1-lb. CELLO PKGS. 35¢

TOMATOES LARGE RIPE 19¢ CELLO PACKAGE

AVOCADOS MED. CALAVO 10¢ LARGE CALAVO 2 for 25¢

FANCY GREEN SPINACH 10-OZ. CELLO PKG. 10¢ GOLDEN-RIPE BANANAS 15¢

LARGE LOOSE WALNUTS 39¢ TUNA STAR KIST No. 10 Can 33¢ SOAP JERGEN'S LOTION 3 Bors 15¢ CHOC. GRAHAMS H.B.C. 6-oz. Pkg. 28¢ CRACKERS H.B.C. SNOWFLAKE 1-lb. Pkg. 25¢ 2-lb. Pkg. 49¢ NECTAR TEA 1-pound Package 99¢ CRISCO 3-pound Can 89¢ DIAL SOAP 2 Reg. Bors 33¢ CORN BUTTER KERNEL No. 303 Can 20¢ MARGARINE ALLWEET 1-lb. Pkg. 29¢ JUNKET POWDER ASS'D FLAVORS Pkg. 11¢ MILK WHITE-HOUSE 3 Tall Cans 41¢ FACIAL TISSUE ZEE SOFT 2 200 Ct. Pkg. 25¢ DOG CANDY FRENCH ALIX 6-oz. Pkg. 19¢

WONG'S CHINESE FROZEN FOOD FRIED RICE ... 12-oz. 43¢ EGG FOO YUNG ... 12-oz. 43¢ PORK CHOP SUEY ... 12-oz. 43¢ CHICKEN CHOP SUEY 12-oz. 43¢

ANN PAGE MACARONI & SPAGHETTI 19¢

DETERGENT TIDE REG. PKG. 27¢

BANQUET WHOLE CHICKEN 3 1/2-LB. CAN \$1.55

CURFEW PEAS No. 303 Cans 21¢

TILLAMOOK CHEESE 59¢ lb.

OCEAN SPRAY Cranberry SAUCE 16-oz. Cans 33¢

KRAFT MIRACLE WHIP PINT SIZE 29¢

OUR OWN TEA 1-LB. BOX 79¢

WILSON'S MOR 12-OZ. CAN 37¢

PARD DOG FOOD 1-LB. CAN 16¢ LIQUID DETERGENT JOY 6-OZ. BOTTLE 31¢



There's nothing just as good that's cheaper!

It's a fact! Your travel dollar buys more comfort, more convenience, more luxury and more miles on modern streamliners than on any other form of transportation. Roundtrips in chair cars on any of the Southern Pacific "name" trains listed below cost only about 2¢ a mile or less. Chair cars on Southern Pacific's modern streamliners have been built with your comfort in the first consideration. Dust-free, draft-free air-conditioning. No glare fluorescent lighting. Soft-as-a-cloud foam-rubber seats. Lots of leg room and move-around room. Extra large windows. Feather-touch doors. Spacious washrooms. That's why Chair Cars on S. P. streamliners are the most luxurious form of all low-cost transportation. There's nothing as good as S. P. for freight shipments, too. We have more miles of line serving more Western cities and towns than any other railroad. For fast, efficient, dependable freight service—whether carload or i.c.l.—call our nearest agent.

BAYLIGHTS	San Francisco, Oakland, Sacramento-Los Angeles
STARLIGHT	San Francisco-Los Angeles
OVERLAND, CITY OF SAN FRANCISCO	San Francisco-Oakland-Chicago
GRANITE BAYLIGHT	San Francisco-Oakland-Portland
SUNSET LIMITED	Los Angeles-New Orleans
GOLDEN STATE	Los Angeles-Chicago

Next time-try S.P. AMERICA'S MOST MODERN TRAINS

Ticket Office: 1200 Border Ave., Torrance—Phone Torrance 1251 KENNETH L. ANDERSON, Agent

Customers' Corner
We've 93 Candles on Our Cake!
Your A&P is 93 years young this week. For it was about this time in 1859 that our founder, George Huntington Hartford, proudly opened the doors of his modest little store on Vesey Street in downtown New York, the forerunner of today's A&P.
Even with his vision, we suppose he'd be surprised to see how his little business has grown. We think he'd be proud, though, to know that the basic idea that guided him then, "to bring more good food to more people for less money," has been the reason for our growth.
We pledge to maintain this principle as long as there's an A&P.
CUSTOMER RELATIONS DEPT.
A&P Food Stores
420 Lexington Ave., New York 17, N. Y.

Board a Full Size ROCKET SHIP!
VISIT
RALSTON'S Space Patrol ROCKET
You Can
Operate the Controls
Fire the Rockets
See the Future Capital of the Universe
Admission: 1 for top from WHEAT CHEX (19¢) RICE CHEX (19¢) or any Ralston Product

Rocket Ship Appearances at the Following A&P Food Stores!
* March 13th - Santa Monica - 2:30 to 7:00 P.M. 2028 WILSHIRE BLVD.
* March 14th - Inglewood - 2:00 to 8:00 P.M. 200 E. SPRUCE AVE.
* March 15th - Westwood - 2:00 to 8:00 P.M. 10929 INDESBROOK DR.
* March 16th - North Hollywood - 2 to 6 P.M. 4770 LANKERSHIM BLVD.

KIDS/Get Your Ralston Rocket Balloon at any A&P Store
1¢ DEAL
WOODBURY SOAP 4 Reg. Bors 25¢
BISKET MIX FISHER'S 2 1/2-lb. Pkg. 45¢
NUTLEY OLEO 1-lb. 21¢
SCOTCH TAPE Sizes 15¢-25¢-39¢
FLOOR CLEANER BRUCE Qt. Size 79¢
SPAGHETTI & MEAT BALLS CHEF BOY AR-DEE 15 1/2-oz. Can 28¢
RAINDROP 24-oz. Pkg. 25¢
BABY FOOD GERBER'S Can 9¢
M.D. TISSUE 2 Bolls 21¢
RICE UNCLE BEN'S 14-oz. Pkg. 19¢ 28-oz. Pkg. 37¢

A&P Super Markets
Prices Shown are Guaranteed through MONDAY, March 17th

1330 El Prado, Torrance

Prices Effective in all Southern California Stores Taxable Items Subject to Tax