

Hi-Lites Of Seaside Heights

By GRAYCE RYCKMAN
Frontier 5-1779

Have you heard the song "How Can I Have Spring Fever When It Isn't Even Spring"? Well, that applied to me last week, but it was spring cleaning fever. So, of course, I didn't get out and see many of our neighbors—so little news.

Guess you already heard that the recent Seaside PTA bake sale was a great success and a large contribution has gone toward reaching the Torrance Council PTA goal, a dental clinic. It should certainly make all you contributors feel real proud.

Have you checked your Seaside PTA directory? Tonight, Valentine's night, is our regular monthly meeting, 8 p.m., at Seaside School auditorium. This will be the Founder's Day program and the night for selecting a nominating committee to choose candidates for next year's officers. Students from our Seaside instrumental class will entertain, and highlight of the evening will be a "fashion show" by the home economics classes of Seaside School. See you there?

Would you believe it — another baby shower was given for another expected member of Seaside Heights, just this past week? How many is that, three in three weeks or four in four? This one was in honor of Dee Callahan. Remember her? Our secretary at the beginning of our Home Owners Association. The shower was given by Anita George, herself a recent mama. Attending were Dee and Anita, of course, Bonnie Cowan, Babet Urbach and Mary Sokolowski of Binkewald, Mrs. Lucas (Anita's mother), Anne Callahan (aunt and visitor at the Callahan home), Nellie Callahan (sister-in-law), Jane Moore and Evelyn Fleischer (friends of Dee's from Los Angeles). Must have been real nice, from the reports I got. Best wishes Dee — and Frank.

A new member has already arrived in the Heights. Last Saturday, Feb. 9, Edward and Joanne Boyle of 5203 Doris Way welcomed a little baby girl at Bellevue Hospital, Gardena. She

weighed in at 7 pounds, 15 oz. and will be called Susan. Her two sisters, Janet 3 and Anna Marie 5, anxiously await the day for "seeing the baby" and, of course, mother's homecoming.

At one of those social-business parties, so popular these days, given on Macaffee last week, the very interesting topic of children came up. Talking one of those mental house-to-house counts of their own street, the guests found that on that one block of Macaffee there were 47 children, with three more expected. Can any other one block here in the Heights beat that record? I wonder which block has the fewest!

I did find time to stop by and talk to Agnes Wilshire of upper Zakon. She certainly is a friendly person, isn't she? Also a very happy one these days, too, to have her daughter, Mrs. Barbara Combs and new granddaughter Elaine, living next door to her with Mr. and Mrs. Larry Cooney. Joanne being Barbara's girl friend. Unfortunately, Barbara's husband was sent overseas just after the baby was born.

Very sorry to hear that Barry Dean Holstin of Zakon has been quite sick, but am informed that he is now back in school. Hope all the trouble is over.

Little Tommy Sokolowski is 5 years old and has been since Feb. 9. It became more official last Sunday, the 10th, when he celebrated with a Valentine motif party. All the boy guests arrived in their best cowboy regalia and included Jerry Filgia no, Alan Wagstaff, Ronnie Leisring, Leslie Taylor and Jerry Wilkerson. Only one girl was present, and she just happened to be visiting the family that day. She was Carol Ann, age 9. Many happy returns, Tommy.

This Sweethearts' Day was also meant for friendly wishes, too, and that gives me a chance to say: Happy Valentine's Day to all of you.

Nationwide Service

for Santa Fe shippers

Convenient ...
... Dependable

Santa Fe Traffic Offices
safeguard your freight shipments in
all parts of the country

WHEREVER you are located, there is a Santa Fe freight representative assigned to your locality and at your service.

Every traffic office has direct communication (by teletype or the world's largest private telephone system) with other Santa Fe offices. You get the information and service you want... promptly and accurately.

Santa Fe freight men know their business. They know your territory and ours—and your local freight problems, too.

These men believe in giving service. So call your local Santa Fe freight representative or your local agent today about your freight shipments.



SHIP via

Santa Fe all the way

SANTA FE SYSTEM LINES

Drilling Rig Waltzed Across Busy Vermont

Many motorists buzzing along 10-story drilling rig waltzing side of Vermont to a new 10-busy Vermont Ave. Saturday across the road in front of them, cation on the east side, General morning were tempted to take. Faced with the problem of Petroleum engineers decided to the pledge when they saw a moving the rig from the west slide the 100-ton derrick across a little.

without bothering to dismantle it—the usual procedure.

Calling in the Star House-movers, the engineers shored up the rig, built a platform under it, and waited for Saturday morning traffic rush to ease off a little.

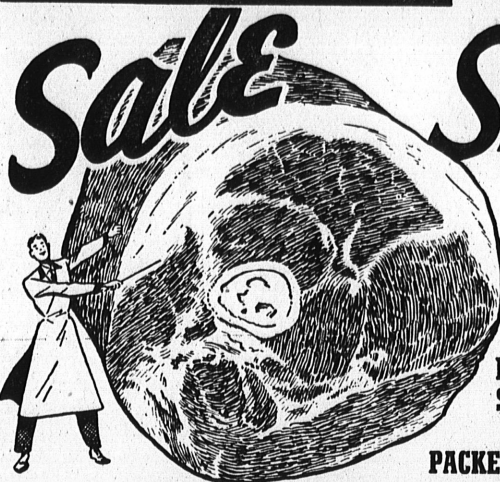
FEBRUARY 14, 1952

TORRANCE HERALD

Nine

Shortly after 8 a.m. crews of the new site. The operation took two hours. The rig now stands on the east side of Vermont Ave just over the hill south of Sepul roadway, and up the bank to veda.

SAFeway



Smoked Picnics

Whether you're planning a dinner or just a week-end snack... use SMOKED PICNICS in the menu... Serve tender picnics of expertly smoked and cured Eastern grain-fed pork—boiled, baked or fried. A long standing family favorite, they are easy to prepare and always delicious. Treat the family, treat yourself, to smoked picnic at Safeway's low, low price.

MORRELL PRIDE
SHORT SHANK
SMALL SIZE
PACKED IN VISKING

lb. **38¢**

LAMB ROAST

Shoulder—5-rib cut from U. S. choice grade. lb. **55¢**

LAMB CHOPS

Short cut rib chops from U. S. choice grade. lb. **93¢**

LAMB BREAST

U. S. choice graded lamb. To stew, bake. lb. **29¢**

BACON

GRADE A SLICED lb. **47¢**

GRADE B SLICED lb. **39¢**

Popular brands in Heat Seal packages. Serve for breakfast.

WIENERS

Somerset or Swift brands. No. 1 skinless. Packed in Cello. Economical, yet tasty. lb. **55¢**

BOILING BEEF

PLATE MEAT U. S. CHOICE lb. **29¢**

TURKEYS

Eviscerated, Gov't Grade A Turkeys. All ready for the oven. A wide selection of sizes in hens and toms. Serve Roast Turkey for dinner!

HENS **65¢** TOMS **55¢**
Per pound Per pound

FRESH EGGS

Top quality fresh eggs, carefully graded & packed in cartons. Buy a dozen today!

Breakfast Gems Large Size Grade A Quality

51¢
dozen

Cream O' The Crop

Large Size Grade AA doz. **53¢**
Finest quality.

PRESERVES

Peach, Pineapple Apricot or Chopped Cherrylode. Welch brand 10-oz. jar **25¢**

VALUES ON FINE FOODS

Not only on meat but also on groceries, you can save at Safeway. Check these values, note the many low prices! To be sure of real savings on foods, shop Safeway!

CHEESE MILD OREGON CHEDDAR lb. **49¢**
Excellent flavor. Priced low.

MARGARINE lb. **19¢**
Dalewood brand, good quality at an economy price.

PORK & BEANS 2 30-oz. cans **25¢**
Taste Tells brand, packed in tomato sauce.

TIDE Giant pkg. (52-oz.) **72¢** Large pkg. (19-oz.) **27¢**
Oceans of suds for clothes or for dishes.



Tomato Juice

Sunny Dawn, fresh tasting.

18-oz. can **9¢**
46-oz. can **19¢**



Airway Coffee

Mild, mellow (3-lb. bag, 2.07) 1-lb. bag **69¢**

Nob Hill Coffee

Finest Quality (2-lb. bag, 1.46) 1-lb. bag **73¢**

Lipton's Tea

Orange Pekoe & Pekoe. Black. 1/4-lb. pkg. **29¢** 16-bag pkg. **19¢**

Margarine

Sunnybank Yellow Foil-wrapped cubes lb. **25¢**

Baby Foods

Clapp's brand. Assorted. STRAINED JUNIOR 3 cans **25¢** 2 cans **19¢**

Long Spaghetti

Gold Medal 1-lb. **19¢** 2-lb. **37¢**

Toilet Tissue

Comfort brand Zee brand High quality Family pack 4 rolls **33¢** 4 rolls **27¢**

WHITE MAGIC SOAP

THE BIGGEST NICKEL'S WORTH YOU CAN BUY! LARGE size (23-oz.) only with GIANT (46-oz.) size at **5¢** **54¢** BOTH FOR **59¢**



Season's Finest Produce
Plentiful & Priced Low!

At Safeway the produce stands are bulging with crisp fresh vegetables... offered at low, low prices.

CABBAGE Crisp, green, solid For slaw or to cook lb. **3¢**

CELERY Utah type, tender green stalk. For tasty salads lb. **5¢**

LETTUCE Imperial grown. Crisp, clean, solid, sweet lb. **5¢**

APPLES Large, Oak Glen Rome Beauties 3 lbs. **25¢**

CARROTS Crisp, sweet, tender Tops removed lb. **5¢**

BELL PEPPERS lb. **15¢**

California Wonders, excellent for salads or to stuff

PRICES EFFECTIVE THROUGH SUN., FEB. 17, 1952, AT SAFEWAY STORES IN LOS ANGELES COUNTY. Right to limit reserved. No sales to dealers. Sales tax added to retail price on taxable items.

SAFeway

1301 SARTORI AVE., TORRANCE
Open Thurs., Fri., Sat. Nights until 9 p.m.

2171 PACIFIC COAST HWY., LOMITA
Open Friday and Saturday Nights until 9 p.m.