



ADVISORY COMMITTEE... Shoestring strip governmental problems have been placed in the hands of an advisory committee to Councilman John S. Gibson. Those attending the organizational meeting this past week were, left to right, front row, Mrs. Don Wolfe, Mrs. W. C. Sidwell, Mrs. Ada Green. Back row, Joe Knight, Councilman Gibson, R. C. McCue and Minot Rugg.

Gibson Picks Advisors For Shoestring Strip

Councilman John S. Gibson of San Pedro has announced completion of his campaign pledge to appoint advisory groups in all sections of the sprawling 15th councilmanic district, to give people a greater voice in their city government.

Organizations of an advisory committee in the Shoestring area, last of the six such groups to be formed, was completed this past week. Harold Unander was named acting chairman of the group with Mrs. Don Wolfe as secretary.

Advisory committees select projects in their immediate area upon which the councilman can concentrate and serve as his representatives in local government affairs.

Other groups were named in San Pedro, Wilmington, Harbor City, South Los Angeles and Watts. The councilman holds regular monthly meetings with the advisory groups and reports progress on projects to them.

Others on the Shoestring committee include Joe Knight, vice chairman; Minot Rugg, Mrs. Ada Green, Mrs. W. C. Sidwell, Mrs. James Gauley, R. G. McCue, Lorimer Patrick, and Raymond Connors.

Regular meeting of the Shoestring group will be on the first Tuesday of each month with the February session to be at the home of R. G. McCue, 20907 Denker avenue.

New Food Distributing

Announcing their association to form the Liberty Home Economy Company this week were three Torrance residents who have entered the wholesale food business.

Partners in the new firm, with offices at 1103 Sartori avenue, are Walt Schaefer, Jim Lawson and Sibbie Labell.

Members of the food company have been named agents for home freezers and will offer Torrance area residents a food purchase plan which will allow them to save considerably in their food purchases, Schaefer said.

The company plans to open a food locker and set up a display room in the future, he said.

JANUARY 17, 1952

TORRANCE HERALD

Fifteen

3 WAYS TO GET A Personal LOAN

1. Phone First... make appointment to arrange for fast 1-visit loan.
2. Write... for application. Fill out and mail or bring in. Cash promptly upon approval.
3. Come In... see YES MANAGER.

It's "Yes" to 4 out of 5! Don't borrow unnecessarily, but if a loan is the right answer, phone, write, or come in. Employed men and women—married or single—are welcome.



Loans \$25 to \$2000 on Salary, Furniture, or Car
Personal FINANCE CO.

Grd. Fl., 1441 MARCELLINA AVE., TORRANCE
Phone 1734—Lloyd H. Peterson, YES MANAGER
Loans made to residents of all surrounding towns

Dr. Berke to Attend College Alumni Meeting

Dr. Arthur Berke, whose dental offices are at 1526 Cravens avenue, will be among the more than 1000 dentists from California and neighboring states to gather in San Francisco January 20 for the 56th annual meeting of the Alumni Association of the University of California College of Dentistry.

The two-day meeting will be held in the St. Francis Hotel and will include lectures, clinics, and demonstrations.

Parents Seek Intersection Stop Lights

The controversial North Torrance intersection of 182nd street and Hawthorne boulevard popped up again at last week's City Council meeting.

Mrs. Emmott Collier, president of the Perry Elementary School PTA, asked the city to request the state to install traffic lights at the intersection, which is used by grade school children on their way to school.

The intersection is partially in Torrance and Redondo city limits, and a small portion is in

Evening Courses At SC Announced

Evening courses in 600 subjects, varying from drilling an oil well to planning a home, are announced by University College of the University of Southern California, beginning with the spring term on February 7.

The majority of classes will meet weekly on campus during the 18-week term and offer college credit, according to Dean Carl Haney.

Los Angeles county. It has been a constant source of protest from parents.

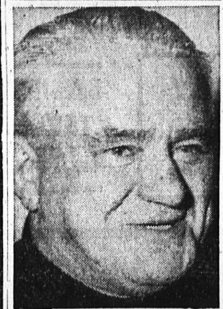
City Council referred the request to City Manager George Stevens for action.

Fourth Quarter Wage Reports Due January 31

Deadline for filing California unemployment insurance wage reports and contribution returns for the fourth quarter of 1951 is Thursday, January 31, 1952, E. L. Funder, auditor in charge for the State Department of Employment in Long Beach said this week.

"I want to remind employers that reporting requirements under the California Unemployment Insurance Act have not been changed and that contributions by both employers and wage earners should be made on the first \$3000 of wages paid to an individual by each employer during a calendar year," he said.

Funder said that employers in need of assistance in filing returns may contact him at 1315 Pine or by telephoning Long Beach 704-441.



JOHN J. LOVELL
... Plant Manager

John Lovell Opens Nursery

John J. Lovell, who has lived in Torrance for more than 30 years, has finally entered the profession that has been his hobby for most of his life.

Lovell this week announced the opening of his Marianna Nursery at 1510 West Carson street. A former painting contractor, Lovell has spent years working with shrubs and plants in and around his own home, and has started gathering a complete selection of plants for his nursery stock. He is receiving deliveries daily.

"I'll be here to help anyone with his landscaping problems," Lovell said.

Lovell, who lives at 1541 West 215th street, plans to operate the nursery by himself, he said.

Representing
PRUDENTIAL and HARTFORD



The Most Sensational Sale of All Sales

at the HOME of FABRICS

126 South Pacific Avenue, Redondo Beach
Is Now In Full Force

We have cut prices far below wholesale... never you must come early because this will not and cannot last. HERE THEY ARE:

WOOLENS 100% 54" to 60" wide in plaids, tweeds, stripes and solid colors. A beautiful selection right off the big bolts; values up to \$1.98 a yard. Now! You are not just seeing things, it's real, at just a yard. **\$1.99**

Wool JERSEY 54", 7-ounce in many colors. Values up to \$3.98. Now, yd. **\$1.99**

SUEDE Cloth 54", 7-ounce in many colors. Values up to \$3.98. Now, yd. **\$1.99**

DAN RIVER SUITINGS Grease Resistant Washable. Value \$1.98. Now a yard. **99c**

ALL NYLON White and printed. Value \$1.98. Now a yard. **99c**

HEAVY FLANNEL 36" flannel and juvenile patterns; also white and solid colors. Values up to 59c. Now, yard **32c**

NEW PRINTED PERCALES and BROADCLOTHS 36" wide. Values up to 79c. Now a yard. **33c**

Rayon Gabardine 42" to 45". Washable—many colors. Value \$1.79... now a yard. **85c**

Plastic by the yard Large selection of patterns. Values up to 79c a yard... now 3 yards for. **99c**

SLIPPER SATINS All colors. 42" wide. Value \$1.98 a yard... now a yard. **99c**

RAYON NETTING 72". Many colors... now a yard. **75c**

Unbleached Muslin 39"—80 square quality. **35c**

DAN RIVER AND IMPORTED ENGLISH PLAIDS Values up to \$1.49 a yard. Now a yard. **85c**

AND... so goes all of our yardage at these reduced prices. Come one, come all. Yes! you can use our lay-away plan... even at this sale. We are open Friday 'til 9:00 p.m. **BRING IN THIS ADVERTISEMENT AND GET YOUR FREE GIFT!**

VELVETEENS Many colors. Value \$1.99. Now a yard. **\$1.99**

PINWALE CORDUROY Many colors. Value \$1.99. Now a yard. **99c**

QUILTED RAYON CREPES Washable—39" wide. Value \$1.98. Now, yd. **75c**

DESERT CLOTH All colors for your drapes and upholstery. Washable. A yard. **75c**

WOVEN GINGHAM Beautiful plaids—washable. Value 79c. 2 yds. **99c**

CRETONS For your drapes and upholstery. Lovely flower prints. Washable. Values to 98c, now. **42c**

SHOWER SETS, WINDOW CURTAINS, TIE BACKS Full size. Large selection. Values up to \$4.98 a set, now a set. **\$2.85**

RAYON TAFFETA 39" to 42" wide. Belding's, the best, in all colors of the rainbow, at yard. **68c**

RAYON CREPE Solid colors for your better dresses. 42" wide. Value \$2.49. Now a yard. **\$1.45**

WASHABLE PRINT PERCALE Now, yard. **25c**

PLASTIC COTTAGE CURTAINS 6 piece sets. Beautiful designs. Value \$2.98. Now a set. **\$1.45**

WHITE FLANNEL Heavy. For diapers and other uses. 4 yards for. **\$1.00**

(Group 4) "The Super Market With the Country Store Flavor" (Group 4)

HINCKLEY'S

LOCATED AT 24020 NARBONNE — LOMITA 444 SPECIALS FOR THURSDAY, FRIDAY and SATURDAY JANUARY 17, 18 & 19

You Will Enjoy Our Comfortable, Well-Heated Modern Market!

GROCERY & MEAT DEPTS. STORE HOURS...
8 A.M. TO MIDNIGHT
FRIDAYS, SATURDAYS AND SUNDAYS
8 A.M. TO 10 P.M.
MONDAYS THRU THURSDAYS

SHOP HERE

AT OUR REGULAR "OVER-THE-COUNTER" BUTCHER SHOP FOR ECONOMY MEATS ONLY! THEY ARE ALL U.S. GOV'T. GRADED STEER BEEF... and VERY GOOD!



U. S. GOV'T GRADED GRAIN-FED STEER BEEF			
CHUCK ROAST	SIRLOIN STEAKS	CLUB STEAKS	T-BONE STEAKS
TENDER, LEAN... 65%	TENDER, TRIMMED... 75%	TENDER, TRIMMED... 79%	TENDER, TRIMMED... 89%

Eastern, Sugar Cured SLICED BACON **39¢**

Fresh Sliced BABY BEEF LIVER **79¢**

Lean, Eastern BACON SQUARES **23¢**

Specials for HOME FREEZERS & FOOD LOCKERS! LAST CHANCE!
By popular demand, we will repeat our Home Freezer Steak Special for One More Week!
U. S. GOV'T GRADED STEAKS
STEER BEEF, TENDER RIB AND T-BONE, 10 lb. Lots Only **\$7.95**
Also Beef Quarters or Halves at VERY LOW PRICES!

BLUHILL—Pound in Quarters	23c
Colored OLEO	83c
S&W—ALL GRINDS—1-Lb. Cans	27c
COFFEE	27c
S&F, Fancy Hawaiian—Lge. No. 2 1/2 Cans	27c
PINEAPPLE	27c

TABLE QUEEN, Large No. 2 1/2 Cans **35c**

GOLD MEDAL "KITCHEN TESTED"
FLOUR
5 LB. BAG **45c**

TOILET TISSUE

SILK—LGE. ROLLS
4 for **19c**
LADY'S CHOICE
SALAD DRESSING
Full Quart **39c**
Jars

LADY'S CHOICE PURE STRAWBERRY PRESERVES
GIANT 12-OZ. JARS **29c**

TOSHI'S GARDEN-FRESH fruits-vegetables

ORANGES
Sweet Navels Full o' Juice 4 LBS. **19c**

California Wonder, Sweet **BELL PEPPERS** **15c** lb.

Fresh, Tender, Local **CELERY HEARTS** **7c** bunch

Sweet, Ripe, Emperor **GRAPES** 2 LBS. **19c**

— LIMIT RIGHTS RESERVED —