

Torrance Church Calendar

THE FIRST METHODIST CHURCH

El Prado & Manuel Ave., Torrance
Rev. Clarence E. Miller, Minister
1620 Manuel Ave.
Weekly Services
4:30 a.m.—Sunday Church School
with Departments and Classes
for all ages from Nursery to
Adult Classes.
10:00 a.m.—Morning Worship Service
(Nursery for babies and
young children during the
Worship Service).
7:00 p.m.—The Methodist Youth
Fellowship (High School and
College age).

THE WALTERIA COMMUNITY METHODIST CHURCH

Temporary Meeting Place
Club House at Walteria
Recreation Park
Las Cadenas and 24th St., Walteria
Rev. Clarence E. Miller, Admini-
strative Pastor, Phone 2052.
Weekly Services
3:45 a.m.—Sunday Church School
with classes for all ages
10:00 a.m.—Worship Service and
Preaching
7:00 p.m.—The Methodist Youth
Fellowship

FIRST LUTHERAN CHURCH

Acacia and Sonoma
Rev. Paul West, Pastor
Phone Tor. 591—Res., Tor. 3397-W
Sunday:
8:15—Early Morning Worship.
9:30—Sunday School.
10:45—Second Worship Service.
8:30 p.m.—Luther League first and
third Sunday.
7:30 p.m.—Wednesday: Study
class on the fundamentals
of the Christian faith.

FIRST BAPTIST CHURCH

Carson and Manuel
Rev. C. Miles Northrup, Pastor
Rev. R. Killman, assistant
Torrance 3084
Sunday:
9:30—Sunday School
10:30—Story hour and Junior
Church
10:50—Morning Worship Service
6:30—Training Groups, all ages
7:30—Evangelistic Service
Wednesday:
7:30—Prayer Meeting
8:45—Choir Rehearsal
Woman's Missionary & Brother-
hood each month.

ST. ANDREW'S EPISCOPAL CHURCH

1432 Engracia Ave.
Rev. Arthur E. Bello
Office Hours 10 to 12
Torrance 560
Sunday Services
8:30—Holy Communion
9:30—Sunday School
10:00—Morning Worship
11:00—Family Service
11:30—Sermon & Prayer
Monday, Tuesday and Wednesday
Choir Rehearsals

FOUR SQUARE GOSPEL CHURCH

1207 El Prado
Rev. & Mrs. Arthur P. Pedersen
Phone Torrance 1153
9:30—Sunday School
10:45—Morning Worship
6:15—Crusader, Builders, Cadets
7:30—Evangelistic Service
Midweek services Wednesday, &
Friday
Saturday 2:30 Children's hour

CENTRAL CHURCH EVANGELICAL UNITED BRETHREN

Marcellina and Arlington
Rev. Homer H. Miller, Tor. 131
9:30—Sunday School
11:00—Morning Worship
6:30—Youth Fellowship
7:30—Evening Service
Midweek Worship Service 7:00
Wednesday evening

FIRST CHRISTIAN CHURCH

Engracia & Arlington
Cecil J. England, Pastor
9:30 Church School classes for
all ages
10:50 Church worship and nursery
provided.
6:30 Christian Youth Fellowship
for High School and College
Youth.

FIRST CHURCH OF THE NAZARENE

1507 West Carson Street
Rev. Freeman A. Brunson,
Minister
20507 N. Royal Blvd.
Phone Menlo 4-2600
Torrance, California
9:30 a.m.—Sunday School hour.
Classes and departments for
all ages and groups.
11 a.m.—Morning Worship.
6:30 p.m.—Youth group meetings.
7:30 p.m.—Evangelistic.

NATIVITY CATHOLIC CHURCH

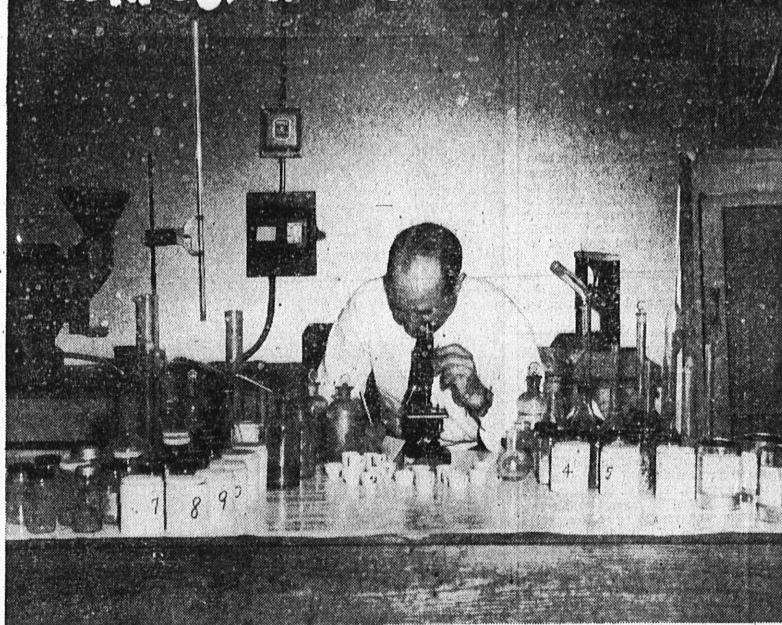
1447 Engracia Ave.
Torrance 332
Rev. P. J. McGuinness
Rev. Robert Gara
Rev. Michael Moser
Sunday mass: 8 & 9:15, 10:30
a.m. and 12 noon.
Weekday mass 7 and 8 a.m.
Wednesday services 7:30 p.m.
Saturday morning instruction for
children, Elementary and
High School 9 to 10 a.m. at
3371 W. Carson.

TORRANCE ASSEMBLY OF GOD CHURCH

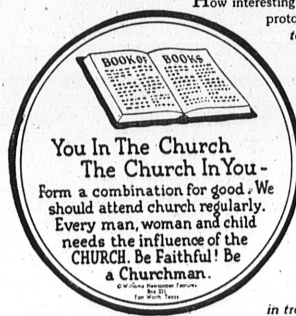
1317 CRAVENS AVE.
Rev. Henry and Mrs. V. Sande
Phone 1725-M
9:45—Sunday School.
11:00—Morning Worship.
6:45—Christ Ambassadors.
7:30—Evening Worship.
Thursday Eve Bible Study and
Prayer Meeting, 7:30.

See You IN CHURCH Sunday

CONFUSION of CREATION



How interesting are the workings of God! He takes the nucleus, the cell, the molecule and the protoplasm and forms staggering miracles. He even takes bodies who have gone almost to Hell and makes men out of them. The laboratories and the human bodies are His work shops. It was He who pulled the switch that set it all to work.



True science and true religion never conflict. God does not contradict Himself. His words and His works harmonize. Modern knowledge compels the revision of the theory that the earth is flat and that the sun daily revolves around it. Yet, it remains true that... "In the beginning God created the heavens and the earth." Religion once declared the work of creation was completed in six days of twenty-four hours each, and outlined in detail the creative process. With increased knowledge teachers are much less dogmatic as to time involved and procedures followed. God is still saying... "My thoughts are not as your thoughts, neither are your ways my ways."

His church is a good place to learn that fancied discords blend in harmony. Increasing numbers of people are able to see through His microscope... "longues in trees, books in running brooks, sermons in stones, and good in everything." Every scientific finding by man is rooted in God. This is the confusion of creation.

With the Hope that More People Will Come to Church this Series is Sponsored by The Torrance Ministerial Association and Made Possible by the Following Civic Leaders . . .

A & P STORES
All A&P Stores Closed Sundays
1330 El Prado — Ph. 784
ALLEN JEWELERS
Fine Jewelry — Friendly Credit
1321 Sartori Ave. — Ph. 87
ALTER REALTY & INSURANCE
Realtors — General Insurance
Opposite the Post Office
1480 Marcellina Ave. — Ph. 2555
BAKER'S FURNITURE
"We Will Not Be Underpaid"
1212 Craven — Ph. 2251
BANK OF AMERICA
Torrance, Calif., P.O. Box 27
DICK BARTON
Chrysler & Plymouth Dealer
1885 Torrance Blvd. — Ph. 606
BENSON'S SHOPS
"You Are Proud to Say
"I Bought it at Benson's"
1271 Sartori — Ph. 2171
W. E. BOWEN
Insurance
1327 Post — Ph. 815
BURKE'S BARGAIN SPOT
2113 Torrance Blvd. — Ph. 1728
CURRIES
Mile High Cones
1664 Craven — Ph. 3114
LYDD DENNEE'S, INC.
1875 Carson St. — Ph. 1728
DICK'S AUTO PAINTING
If it's worth driving, it's worth painting
Arlington Ave.
DUNHAM'S AUTO PARTS
and SUPPLIES
We Sell Quality Not Quantity
1407 Carson St. — Ph. 2691 or 2692
FRANK'S FURNITURE CO.
Complete Household Furnishings
1334 El Prado — Ph. 1443
FRANK'S SERVE SELF
1518 Cabrillo Ave. — Ph. 2428
FELKER MFG. CO.
Diamond Abrasive Tools
1128 Border Ave. — Ph. 1588
GARY'S JEWELERS
Expert Watch Repair—Your Credit is Good
1222 Sartori — Ph. 466
HELEN & VESTA'S CAFE
Closed on Sundays
1605 Cabrillo — Ph. 1347
JOHN WILEY JONES CO.
Chemical Specialties
1604 Border — Ph. 242

DR. JOHN FRANK KABEL
Palmer Graduate Chiropractor
2409 Torrance Blvd. — Ph. 3446
KENNY'S SHOE REBUILDING
Comfortable Old Shoes Rebuilt Like New
1278 Sartori — Ph. 1278
LA GALERIA FLORIST
Distinctive Flowers for All Occasions
Delivery & Wire Service, Member F.T.D.
1657 Graneray Ave. — Ph. 831
LAWSON'S JEWELERS
Your Torrance Jeweler
1317 El Prado — Ph. 3181
LONGREN AIRCRAFT CO.
Leaders and Pioneers in the
Aircraft Industry
2576 W. Carson
MARGE'S GIFT SHOPPE
Gifts for All Occasions—Owner Ethel Dunham
1403 1/2 W. Carson St. — Phone 979
MCCOWN DRUG STORES
"Serve Yourself and Save"
1327 El Prado — Ph. 2345
MCMAHAN FURNITURE
1306 Sartori — Ph. 2311
MODE O' DAY FROCK SHOP
Dresses, Lingerie, Blouses, Hosiery
1119 Sartori Ave. — Ph. 2096
NATIONAL BARBER SHOP
We Give Service
1415 Marcellina
NATIONAL HOME APPLIANCE
Appliance Headquarters
1207 Sartori Ave. — Ph. 78
NATIONAL PAINT & WALLPAPER
The Store That Mary Runs
1408 1/2 Sartori Ave. — Ph. 846
J. J. NEWBERRY CO.
So - So - So Store
1275 Sartori — Ph. 1245
PACIFIC PERFORATING CO.
Attend the Church of Your Choice
1528 El Prado
PAIRISH STATIONERS
Typewriters—Office Equipment
1415 Marcellina Ave. — Ph. 877
PAUL'S CHEVROLET
Your Local Chevrolet Dealer
1640 Cabrillo — Ph. 617
HOWARD PERCY
Realtor—Insurer
2224 Torrance Blvd. — Ph. 983
POST AVENUE MOTORS
Automobile Sales & Service
1326 Post Ave. — Ph. 678
ROME CABLE CORPORATION
1739 21st St., Torrance, Calif.
ROTHS MARKET, INC.
Open Every Night 11 to 10 for Your Convenience
1421 Post Ave.
SALM MFG. CO.
Jesus Christ the Same Yesterday, Today
and Forever—11th, 13-8

SCHULTZ & PECKHAM
Your Ford Dealer
1420 Cabrillo Ave. — Ph. 3092
SCOTT'S ROOF SERVICE
Roofing of All Kinds
1278 Sartori — Ph. 1278
SHERWIN-WILLIAMS CO.
Home Decoration Service Center
1625 Cabrillo Ave. — Ph. 2195
DR. ARVOL P. SMITH, D.C.
2510 Torrance Blvd. Ph. 1412
SMITH FLOOR COVERING CO.
All Types of Floor Coverings
1268 Sartori — Ph. 630
STADIUM, GRAND and TORRANCE THEATRES
Phone 1021
STAR FURNITURE CO.
Complete Household Furnishings
1255 Sartori Ave. — Ph. 625
WM. H. TOLSON & ASSOCIATES
Real Estate & Insurance
1920 Carson St. — Ph. 1897
TORRANCE BRASS FOUNDRY
Centrifugal Castings
1225 21st St. — Ph. 1201
TORRANCE HARDWARE CO.
Over 30 Years in Torrance
1515 Cabrillo — Ph. 1450
TORRANCE HOBBY SHOP
Your Favorite Toys & Hobbies
1219 El Prado — Ph. 1127
TORRANCE PAINT & BODY SHOP
Body & Fender Work
1817 W. 21st St. — Ph. 3445
TORRANCE PLUMBING CO.
Quick, Dependable Service
1418 Marcellina — Ph. 60
TORRANCE SHEET METAL SHOP
Serving Torrance Since 1928
1401 Border Ave. — Ph. 350
TORRANCE TEE VEE
Largest TV & Repair Service in This Area
1623 Craven Ave. — Ph. 650
TORRANCE UPHOLSTERY
Upholstery, Draperies, Slip Covers
Factory Direct Satisfaction Guaranteed
Phone 1157
TRESKES MENS WEAR
Store for Men
1319 El Prado — Ph. 3261
TWO MACK'S ELECTRIC
Electrical Contractors
2223 Border Ave. — Ph. 380
VIRGEL'S WHEEL ALIGNMENT
"Save a Life—May Be Yours—
Safety Check, Now!"
1759 Carson St. — Ph. 1783
WARREN SOUTHWEST, INC.
P.O. Box 419, Torrance, Calif.
R. C. WILLIAMS' GARAGE
Your Official Garage
1605 Border Ave. — Ph. 149

Responsibility Sermon Theme

"Our Responsibility for the New Year" will be the sermon theme of Rev. Clarence E. Miller Sunday morning at the First Methodist Church. The morning service begins with organ prelude at 10:50 o'clock.

Nursery care for infants and young children is provided during the church service for the convenience of parents who wish to attend.

According to Rev. Miller there has been a steady increase in church attendance which is crowding the capacity of the facilities. Evidences of an increased interest in church activities is seen in all departments.

The Sunday school, which meets at 9:30 a.m. under the direction of M. R. Ransom, has made a substantial growth. Departments and classes for all ages of children, youth and adults is provided. Plans are under way for the expanding of facilities which will make room for an ever-growing church to match the needs of our growing community, said Rev. Miller.

Missionaries To Speak Here

Dr. and Mrs. J. T. Brenen, visiting missionaries, will tell of their activities Wednesday night, January 16, at the First Baptist Church here.

The Brenens have spent some 20 years in missionary work in Indonesia and Borneo. The program will begin at 7:30 p.m. Pastor C. Miles Northrup has announced.



REV. JERRY ZWALL
... Will Appear Here

Special Services Set For Hammerton Church

A unique presentation of the Gospel will be given January 15 through January 21 at the Hammerton Tract Community Church, Elliott and Milton streets, Rev. Donald Flentag has announced. The special services will begin at 7:30 each night.

Rev. and Mrs. Jerry Zwall of Los Angeles will be the speakers for the services. Both are graduates of the Los Angeles Bible Institute and Bob Jones University.

The couple has been featured at Bible conferences and youth rallies on the West Coast.

Sacrament Theme Of Church Text

The earnest and consistent effort to worship God spiritually and to follow the example of Christ Jesus in daily life brings rich rewards, declares the Bible Lesson on "Sacrament" in all Christian Science churches Sunday.

The Golden Text is from the Psalms (24:3,4): "Who shall ascend into the hill of the Lord? or shall stand in his holy place? He that hath clean hands, and a pure heart."

In a Bible selection Peter writes (1 Pet. 3:12, 13, 15), "The eyes of the Lord are over the righteous, and his ears are open unto their prayers; . . . And who is he that will harm you, if ye be followers of that which is good? . . . But sanctify the Lord God in your hearts, and be ready always to give an answer to every man that asketh you a reason of the hope that is in you with meekness and fear."

A passage from "Science and Health with Key to Scriptures" by Mary Baker Eddy reads, "Are we benefited by praying? Yes, the desire which goes forth hungering after righteousness is blessed of our Father, and it does not return unto us void" (p. 2).

BAPTIST WOMEN MEET JANUARY 17

The Women's Baptist Missionary Society of the First Baptist Church will meet next Thursday, January 17, at 10:15 in the church annex, President Mrs. W. D. Berard announced. Program for the meeting will be put on by the Mexican Baptist Church, located on 223rd street near Main.

NOW MEETING NEW LOCATION SOUTH BAY CHURCH OF GOD

"The Church of the Christian Brotherhood Hour" 17661 YUKON AVE. TORRANCE, CALIF. FR 24013
Sunday 9:45 a.m.—Sunday School
11:00 a.m.—Morning Worship
6:30 a.m.—Young Peoples
7:30 p.m.—Evangelistic
Thursday 7:30 p.m.—Prayer Meeting

Stone and Myer
General Directors and Advisors
—SINCE 1912—
1221 ENGRACIA AVE.
PHONE TORRANCE 195

SERVING TORRANCE . . . with



SERVEL

Only one refrigerator makes ice and cold with no noise, no vibration, no hum of stopping and starting. That's the famous Servel. Servel stays silent, lasts longer because it hasn't a single moving part in its freezing system. It's marvelous; it's motorless. Prices as low as \$239.95.

— GUARANTEED 10 YEARS —

FLOOR FURNACES

— ALSO —

DUAL & WALL FURNACES

Thermostatic Controls

F.H.A. FINANCING

Torrance Plumbing Co.

Appliances — Heating — Plumbing Repairs
1418 Marcellina Ave. — Torrance 60

