

Harbor Adult Chorus Seeks New Members

The Harbor Area Adult Chorus is still seeking new members before it begins rehearsals for the presentation of Bach's "St. Matthew Passion" on Good Friday, April 11.

The Harbor chorus will join with the 13 other choruses from throughout the Los Angeles area for the program to be presented at the city's annual Good Friday radio broadcast.

Combined rehearsals with other choruses will begin at the end of this month.

The Harbor chorus meets each Monday night in San Pedro at Anderson Playground, 825 So. Mesa street.

Barber Shoppers Play Host to Nearby Chapters

The Torrance chapter of the barber shop quartet association, known officially as the SPEBSQ-SA, played host to the Huntington Park and Long Beach chapters January 3 at a regular tri-chapter meeting at the YWCA.

Also on hand for the special ladies night meeting were members of the San Gabriel chapter, the sponsoring group for the local barber-shop-style singing enthusiasts.

The "Four Bits of Harmony," a foursome from Long Beach who won the Far Western district championship recently, furnished the night's feature entertainment.

San Gabriel Highwire Orchestra, a group of 14 singers who double as hill-billy musicians, also performed.

The Torrance chapter is growing rapidly, but is still on the lookout for new members. They meet every Thursday night at 8 in the Torrance High School.

Harbor JC to Start Second Term Feb. 3

Offered at Harbor Junior College during the spring semester which starts February 3, will be 232 classes, including 157 regular day and 75 late afternoon and evening classes, according to Dr. John Allan Smith, administrative dean.

Registration for all classes will be held from 8 a.m. to 10 p.m. on Monday and Tuesday, Feb. 4 and 5, with all classes to start on Wednesday, Feb. 6, or at the first scheduled class meeting thereafter.

Major fields of study in which regular day and extended day courses will be offered include accounting, art, astronomy, audio-visual, bacteriology, biology, botany, chemistry, child care, construction, drafting, economics, electricity, engines, English, foods, French, geography, health, history, hotel management.

Humanities, instruments, journalism, Latin, library, machine maintenance, management, mathematics, mechanics, modeling, music, nursing, office machines, petroleum, photography, physical education, physics, physiology, police, political science.

Printing, psychology, radio, riveting, school correspondence, secretarial, selling, sociology, Spanish, speech, surveying, technical illustration, transportation, typewriter repair, video, and zoology.

All Harbor Junior College courses are tuition-free. However, each student is expected to take out an Associated Students Organization membership to provide financial support for the social and

City Receives \$27,985 from State Auto Tax

Torrance has received \$27,985.85 from the state as its share of the motor vehicle license fees collected during the period from June 1 to November 30, 1950.

The funds are prorated to each city in the state on a per capita population basis.

Torrance's share was determined on the population figure of 22,241 as reported in the 1950 census.

The funds received by the city must be used in some form pertaining to traffic and highways. This can include the pay of police officers assigned to traffic control, street repair, installation of traffic signals and other expenditures along this line.

Half of the total funds collected by the state went to the 38 California counties; the other half was split among the 306 incorporated cities in the state.

Harbor Dean To Address Forum Club

Ray Hatfield, dean of Harbor Junior College, will be the guest speaker at the monthly meeting of the Fellowship Forum Club Sunday night, January 13 in the YWCA building on West Carson street. It was announced by Mr. and Mrs. Hugh Reed, co-presidents of the club.

Hatfield will speak on the subject "A Christian Responsibility in Education." Following the address, the speaker will direct the discussion during the coffee hour.

This meeting is open to the public and all who are interested in the subject are cordially invited.

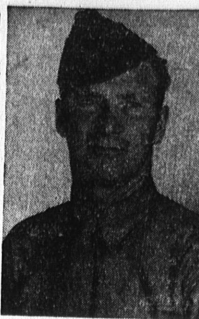
AIR DATES

First broadcast of a presidential inauguration was of Calvin Coolidge in 1925. The first telecast of such an event was Harry Truman's inaugural that occurred in 1949.

Representing
PRUDENTIAL
and
HARTFORD



Lund CO.
AGENTS



Cal Poly Prexy Speaks at Dinner

Dr. Julian A. McPhee, California Polytechnic college president, was guest of honor at the third annual dinner of the El Camino college agriculture department recently. The dinner was held in the Campus Center building on the local campus.

Dr. McPhee, speaking to the dinner guests, outlined the fields

of opportunity open to students of agriculture in California.

El Camino college board of trustee members Melvin Allen, Al Wilson, Dr. E. E. Lyder, and board president Robert Russell attended the dinner.

Orchids were presented to each lady at the speaker's table through the courtesy of Harry Rapella, member of the advisory committee and owner of an orchid farm in Hawthorne.

Arrangements for the dinner were made by student Jack Schultz, and C. W. Fursdon, agriculture instructor.

College Expands Art Instruction Program

El Camino College opens its spring semester January 25 with an expanded art program designed to meet the needs of both full time day students and employed evening students, according to Dr. W. A. Harless, director of instruction.

Art offerings at the tuition free college include instruction in oil and easel painting, life drawing, metalcraft, home and commercial design, crafts, ceramics, sculpturing and many others.

Prospective home owners in the area have provided the college with an increasing number of students in art classes which have a practical significance in the beautification of a home and its furnishings.

DRY YOUR CLOTHES
FOR PENNIES
WITHOUT WORK
REGARDLESS OF
THE WEATHER



SEE
THE . . .
**BENDIX
DRYER**

This
Week
at

McMahan's
FURNITURE STORES

CORNER SARTORI
AND EL PRADO
IN TORRANCE
PHONE 2811

HOT WATER ALL THE TIME!

Don't ration hot water! Come in today and choose a modern automatic water heater from our complete stock—featuring

- DAY and NITE
- GENERAL
- CRANE
- MISSION
- PERMA-GLASS

TORRANCE PLUMBING CO.

Appliances — Heating — Plumbing Repairs
1418 Marcelina Ave.—Torrance 60

EASE the SQUEEZE on Your FOOD BUDGET

You can do it. Hundreds of families are doing it every week by getting all their food needs at CARSON MART. You see, we make every price a low price every day and that means sure savings . . . bigger savings . . . on every food order. Try shopping here for one month. You'll make the pleasant discovery that you're taking less money out of your pocketbook and putting more money in your bankbook.

| | | | |
|-----------------------|---------------------|-------------------------------------|-------------------|
| PORK LOIN ROASTS | 49¢ ^{lb} | BANANAS SOUTH AMERICAN | 12¢ ^{lb} |
| BLADE CUT CHOPS | 49¢ ^{lb} | CAMPBELL'S TOMATO SOUP | 3 CANS 31¢ |
| LUER'S FANCY BOLOGNA | 53¢ ^{lb} | PURDOL SHORTENING | 3-LB. CAN 79¢ |
| SNOWFLAKE—1-lb. Box | 25¢ | FANCY, CUBED, COLORED OLEOMARGARINE | 19¢ |
| CRACKERS | 25¢ | SUNKIST FROZEN ORANGE JUICE | 6-OZ. CAN 17¢ |
| PICTSWEEP FROZEN PEAS | 19¢ | BEST FOODS MAYONNAISE | PINTS 39¢ |
| NIBLETS—12-oz. Can | 15¢ | UKELELE BRAND—No. 2 Can | 24¢ |
| CORN | 15¢ | PINEAPPLE SLICES | 24¢ |
| ALL FLAVORS JELLO | 2 FOR 13¢ | SHANK HALF OR WHOLE HAMS | 59¢ ^{lb} |
| BEST FOODS NUCOA | 29¢ ^{lb} | CHOICE BEEF CHUCK ROASTS | 67¢ ^{lb} |
| SMALL GRADE A EGGS | 47¢ ^{doz.} | FRESH LEAN GROUND BEEF | 65¢ ^{lb} |
| | | LUER MERIT BRAND SLICED BACON | 45¢ ^{lb} |
| | | LUER'S WIENERS ALL MEAT | 59¢ ^{lb} |
| | | CENTER CUT PORK CHOPS | 69¢ ^{lb} |
| | | STEAKS ROUND—SIRLOIN—T-BONE | 97¢ ^{lb} |

The Busy Local Independent
CARSON MART
1929 CARSON ST. Pay Roll Checks, Cashed Limit Rights Reserved TORRANCE

Boy, I'm really
hot water happy
Gas heats water 3 times faster
and costs less, too!

Nothing's a chore when there's hot water galore . . . and gas keeps it on tap 24 hours a day. Gas heats water 3 times faster than any other practical fuel . . . faster even than you need it for an automatic clothes washer, dishwasher or growing family. The chart below shows the size of automatic gas water heater you require. Compared with other automatic heaters, it costs less to buy and install . . . less to operate. Be really hot water happy with gas and a heater of proper size!

DO YOU KNOW THAT GAS DRIES CLOTHES
DAY OR NIGHT, RAIN OR SHINE?

Gas dries laundry faster than Southern California sunshine . . . faster than any other fuel. It eliminates all clothesline drudgery . . . and sprinkling, too. Towels come out soft and fluffy, ready to fold and put away. Learn all that an automatic gas clothes dryer will do for you. Visit your dealer's today.

Here's minimum size AUTOMATIC GAS WATER HEATER your family needs:

| Number Bedrooms | Number Bathrooms | Gallons Storage |
|-----------------|------------------|-----------------|
| 1 | 1 or 2 | 30 |
| 1 | 3 or 4 | 40 |
| 2 | 2 or 3 | 40 |
| 2 | 4 or 5 | 50 |
| 3 | 3 | 50 |
| 3 or 4 | 4 or 5 | 75 |

Approved by Pacific Coast Gas Assn.

Live better, spend less with **GAS**