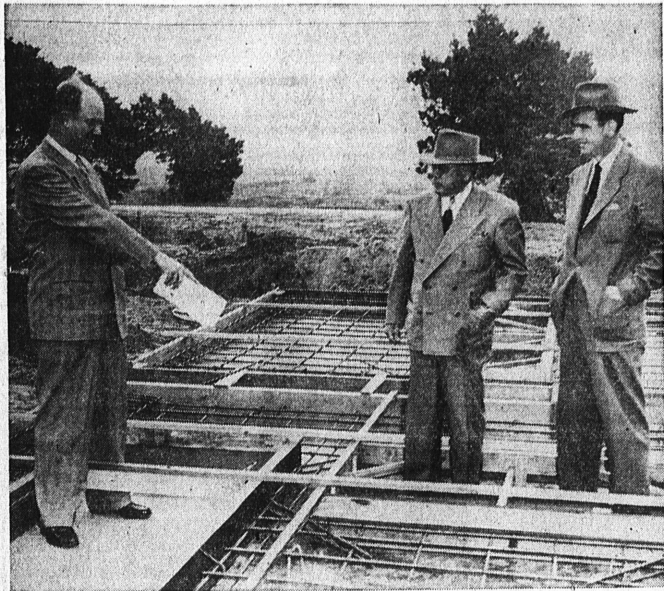


TORRANCE CALIFORNIA, THURSDAY, JANUARY 3, 1952

Thirteen

## New Elementary School Building Raised 'Overnight'



**SCHOOL CHECK . . .** Checking the site of the new Madrona Elementary School are Dr. J. H. Hull, superintendent of schools here; Harry A. Hopkins, director of the Kern County Economic Council and Larry H. Bennett, assistant director. Dr. Hull is standing in a door and the two visitors in windows of the wall section. (Herald Photo)

Tilt-Up  
Starts on  
New School

Something new in the way of school construction beat the rains to town last week when workers began the "tilt-up" operations at the new Madrona Elementary School site.

Raising of the pre-cast walls was heralded as the first time such a construction method has been used to erect a school building. The school is located at Madrona avenue and El Dorado street.

The operation left most of the score of spectators and school officials open-mouthed. To lift the huge wall sections, which had been poured in forms laid on the concrete floor of the proposed building, a vacuum was set up on a steel plate which had grids marked off with sponge rubber.

## HEAVY SLABS

The sections weighed from five tons to slightly more than 16 tons, according to James M. Warner, superintendent for the George W. Carter Company, contractors.

Workers were ahead of schedule when they started the "tilt-up" operation. Emmet Ingram, board of education business manager, said. The schedule calls for completion within 150 days, as compared to an average construction time of 240 days for schools of comparable size.

## COSTS DOWN

In addition, the cost factors make the new type of school construction very attractive. The saving in maintenance, insurance rates, and other factors add to the wonder of the modern school structure.

One interested "sidewalk superintendent" at the Madrona site last Thursday was Larry H. Bennett, assistant director of the Kern County Economic Council, who had been here earlier looking over the various steps in the construction of a "tilt-up" building.

L. A. School  
Officials See  
'Tilt-Up' Here

Several officials of the Los Angeles City School system were among the interested spectators at the "tilt-up" operation which got under way last week at the Madrona Elementary School site.

Identified among those present were Harold Omsied, chief structural engineer for the system, and two of the district's inspectors.

Also present was Ernest Maag, supervisor of structural engineers in the division of architecture in the California Department of Public Works. Maag was one of the checkers who approved the original plans for the "tilt-up" structure which has been rising here in Torrance.

The construction has been watched by a number of high-ranking school and civic officials from various parts of California.

"I'm sold on this thing," Bennett said after watching employees of the Hesse Crane Service pick up the slabs and place them into position around the mushrooming school.

## OTHERS INTERESTED

Bennett and Harry Hopkins, director of the council, were here when workers were completing the forms to talk to Dr. J. H. Hull, superintendent of schools. They both expressed "considerable interest" in the type of construction at the time.

The new Madrona Elementary School will have 10 classrooms with 960 square feet of teaching space in each room when completed.

Also to be constructed by the "tilt-up" method is the new Hollywood Riviera Elementary School. The cost of constructing the two schools will be about \$9.94 per square foot. The previous district average has been \$10.51 over the past five years. The state average is about \$14 a square foot.

Schreiber and Peterson were architects for the Madrona school.

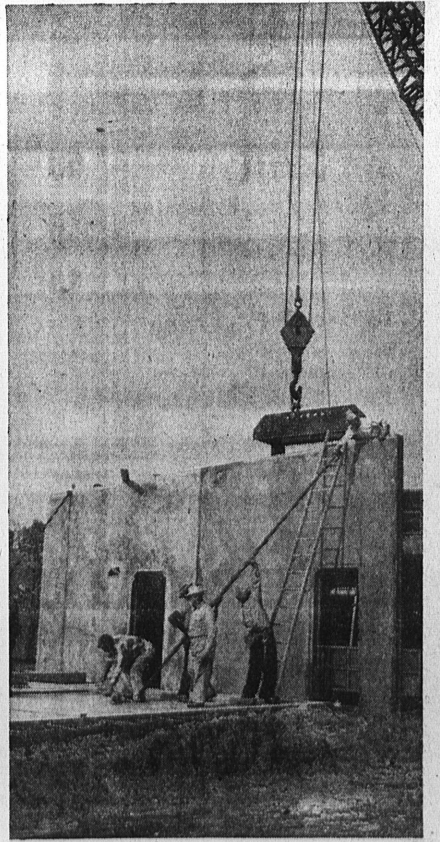


**POURING THE WALLS . . .** A huge load of concrete is being poured into the wall sections which have been formed on the site of the new Madrona Elementary School. After it had

been allowed to set for several weeks, the walls were tilted up with the huge crane shown below.—Herald Photo.



**UP SHE GOES . . .** A huge plate with vacuum grids pick up a wall section from the concrete slab which will later be a floor for another classroom.—Herald Photo.



**INTO PLACE . . .** The crane man gingerly drops the wall section into place as workmen scurry over the top to brace it up until the various sections can be joined together.—Herald Photo.



**KIBITZERS . . .** Johnny Newborn and Billy Morris ponder over a chess game while other Torrance young-fry look on during the recent school holidays. The boys spent much of the vacation period at the YMCA building on Washington boulevard near the intersection of Arlincton avenue and Plaza Del Amo.—Herald photo.



**NEGOTIATIONS . . .** Measuring distances, and trying to decide just who came the closest in a horseshoe battle at the YMCA, are Ernie Redfern, left, and Richard Minnis, second from right. Adding assistance are little Milt Isbell Jr., Curtis Davis, and Jimmy Minnis.—Herald Photo.

## 1952 March of Dimes Campaign Opens Here

Torrance's 1952 March of Dimes campaign officially opened here yesterday, Chairman Mrs. Clara A. Conner announced. It will continue through the end of January.

The March of Dimes campaign is conducted annually to raise funds to combat infantile paralysis. The drive furnishes funds for both care of polio patients and for research.

Serving as vice-chairman to Mrs. Conner will be Jim Felts. George W. Post will act as treasurer for the campaign.

## Post Office.

Small replicas of iron lungs are being placed in many local stores. These will be used as collection boxes for the March of Dimes contributions. Contributors may also mail money to the post office.

The March of Dimes was originally started by President

Franklin D. Roosevelt, himself a polio victim. Within a few years the drive became a national one, furnishing millions of dollars for polio victims.

Serving as California's state chairman for the campaign this year is Governor Earl Warren, whose daughter last year was a polio victim.