



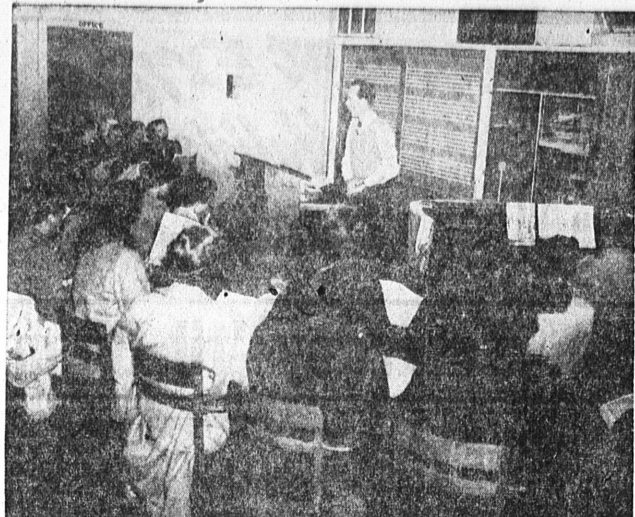
Your health and your money are precious. Don't waste either! Let us fill your prescription accurately and economically.

Torrance Pharmacy

GEORGE PROBERT

1411 Marcelina—Ph. Torrance 3

DEPENDABLE PRESCRIPTION SERVICE



REHEARSE MESSIAH . . . Neil Hill, El Camino choral director, is shown here leading the women's section of a community chorus rehearsing "Messiah," which will be performed next Sunday, December 16, at the Campus Center building on the El Camino campus. The program will start at 7:30 p.m.

Lions to Hear Speakers On Fur Industry

Representatives of Allied Fur Industries, one of the city's lesser known industries, will present the program at the Torrance Lion's Club Tuesday, December 18.

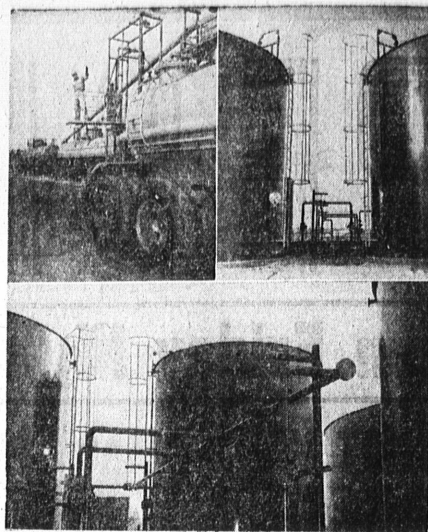
Lloyd Preswick, president of the North Torrance firm, and Don Grover, district manager of the Chinchilla sales concern, will present colored slides and briefly outline the history of the industry in the U. S.

Jack O. Baldwin is program chairman and will introduce the speakers.

At the meeting held Tuesday, Frank Carpenter, city recreation director, presented a sound film on the Los Angeles Rams.

EL CAMINO BAND PLAYS AT DANCE

The El Camino college band will play for the North Torrance Civic Improvement Association dance Saturday night. The dance will be held in the Master hall, 17th and Yukon, starting at 8 p.m.



NEW INDUSTRIAL FACILITY . . . Dow Chemical Company's new storage and distribution facilities designed to handle caustic soda solution was opened this week near here. The new terminal will increase Southern California's potential for defense production, officials say.

GINNY BALDWIN BETTY MATSON
SEASIDE-RIVIERA
'Potpourri'
RUTH HANOVER HELEN SCHMITZ
Frontier 5-1410

Seaside residents are delighted to note that trees have been planted all around the rim of the hill, just behind the new homes. Our guess is that they are lovely, quick-growing eucalyptus, and it will be a welcome sight in just a year or two. Our sincere thanks to Mr. Ben Haggott.

Deepest sympathy to Betty Kocher of 804 Calle de Arboles, for the loss of her husband, Jordan.

Lois and Harry Greenwood, formerly of 5330 Carol drive and now residing in San Francisco, proudly announce the birth of their baby boy, Stephen Paul Greenwood, on November 25. Young Stephen weighed in at 4 pounds, 2 ounces.

There has been a rash of birthday parties for the younger set in the Rancho. On December 8, Skipper Brizius of 6151 Sharynne lane celebrated his sixth birthday; on the following day Janet Lawrence of 5421 Linda drive escorted her guests to the show; and on December 10 Carolyn Roettger hosted a number of guests at a birthday dinner.

The first Yuletide party was held at the Richard Blakeleys of 720 Calle de Arboles last Sunday afternoon. Guests included Mr. and Mrs. Bud Mewborn, Mr. and Mrs. Harvey Spelman, Mr. and Mrs. William Schmitz, Mr. and Mrs. Paul Roettger and Mr. and Mrs. James Berkeley of Manhattan Beach. During the evening the group gathered at the home of Helen and Bill Schmitz for a Sunday night supper.

One of the outstanding events of this year is this Saturday night's Las Vecinas Christmas dance at the Riviera Beach Club. Tickets may be obtained from the following: Ethel Sacks on Sharynne lane, Frontier 5-1930; Peg Thorne on Zakon, Frontier 5-2165; Peggy Reid on Linda Vista, Frontier 5-4698; Maxine McDonald on Aragon, Frontier 5-481; Lynetta Bow-

SPACE MEASURED
About 35.7 million square miles separate Mercury from the sun, its nearest neighbor.



Garbage Disposal This Christmas!

Eliminate Garbage Forever—Automatically! There's a size to fit your present kitchen sink.

PROMPT DELIVERY AND INSTALLATION BEFORE CHRISTMAS!

LOW DOWN PAYMENT!

Torrance Plumbing Co.
Appliances — Heating — Plumbing Repairs
1418 Marcelina Ave. — Torrance 60

Calling All Thrifty Housewives!...

PEACHES

Exposition
Elberta Freestones

No. 2 1/2 can	25¢
Our Own Tea 1/2 lb. pkgs.	49¢
Our Own Tea Bags 1 lb. pkgs.	89¢
Ann Page Macaroni 1 lb. pkgs.	79¢
Heart's Delight, Solid Pack Tomatoes No. 2 1/2 can	19¢
Welch Grape Juice 24-oz. bot.	21¢
Sunshine Ketchup 1 lb. pkgs.	39¢
Sunshine Crackers 1 lb. pkgs.	29¢
Sunshine Cookies 7 1/2-oz. tins	25¢

PILLSBURY'S BEST

FLOUR

5 lb. bag	49¢
10 lb. bag	94¢
25-lb. bag	2.25

Pillsbury Mix 2 1/2-lb. pkgs.	32¢
Nucor-Far Baking Margarine 1 lb. pkgs.	32¢
Baking Soda 12-oz. jar	35¢
Kraft Powdered Margarine 1 lb. pkgs.	33¢
Sugar Honey Graham Crackers 1 lb. pkgs.	32¢
Nabisco Oreo Cream Cookies 6 1/2-oz. pkgs.	23¢
Chocolate Syrup 1 1/2-lb. jar	47¢
Bosco	

RATH'S BLACKHAWK LUNCH MEAT 12-oz. can	47¢
Breakfast Sausage 8-oz. can	39¢

Junket Quick Fudge Mix 12-oz. pkgs.	33¢
Sperry Flour—28-oz. 29¢	17¢
Wheathearts 14-oz. pkgs.	17¢
San Ami Glass Gloss 1 pt. can	39¢
Clonster Old Dutch 14-oz. pkgs.	12¢
Modess 2 pkgs. of 12	77¢

A&P Coffees	
Mild & Mellow Eight O'Clock 1 lb. can	77¢
Rich and Full-Bodied Red Circle 1 lb. can	79¢
Vigorous and Winy Bokar 1 lb. can	81¢

CHICKEN 'N RICE DINNER

for less than 20¢ a serving!

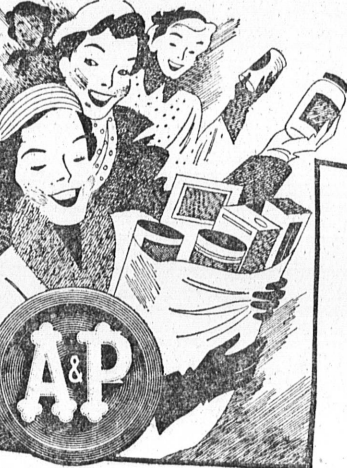
SWANSON and CHICKEN UNCLE BEN'S FRI-CASSEE RICE

1-lb. can 53¢ 14-oz. pkgs. 19¢

Customers' Corner

There never was anything done that couldn't be done better. That's why every day we're looking for new ways to give you better food, better service and a better deal all around.

If you have any suggestions as to how we can make your A&P a better place to shop, please write: CUSTOMER RELATIONS DEPT. A&P Food Stores, 420 Lexington Ave., New York 17, N.Y.



Come to A&P for Food Buys Galore!

CHRISTMAS TREES

Freshly Cut Douglas Fir 2 to 3-ft.	59¢
3 to 4-ft.	75¢
5 to 6-ft., 1.30	
7 to 8-ft., 1.75	
9 to 10-ft., 2.65	

APPLES Fancy and Extra Fancy Washington Red Delicious	2-lbs. 29¢
AVOCADOS Best Grade Fuerte	2 for 25¢
SPINACH Sunny Sally—Cleaned, Washed	Cello Pkg. 12¢
BANANA SQUASH	lb. 3 1/2¢
Diamond, Large WALNUTS 1-lb. cello	45¢
Blue Diamond, Soft Shell ALMONDS 1-lb. cello	42¢

Your A&P Has An Excellent Selection of Fancy Gift-Packed Dried Fruits

Packed in Ready-to-Mail Cartons

PRICES ARE LOW, TOO, AT A&P!

Fancy Eastern, Grain-Fed PORK LOIN ROAST Full Rib Half	49¢ lb.
Full Loin Half	53¢ lb.
PORK ROAST OR CHOPS Loin End	49¢ lb.
Rib End	45¢ lb.
Center Cut Loin	63¢ lb.
PORK SHOULDER ROAST Picnic Cut 4 to 6-lb. Avg.	35¢ lb.
Butt End	49¢ lb.
Morrell's Pride, Viking Wrapped Smoked Picnics	39¢
Wilson's Certified Braunschweiger	59¢
Wilson's Certified Link Sausage 1/2-lb. cello	29¢
Former John—Grade A—Cello Wrap Sliced Bacon	47¢
H & G—Fancy Eastern Whiting	29¢
Fillet—Cello Wrap Dover Sole	57¢

Wieners Oscar Mayer with Barbecue Sauce, 11-oz., 49¢	39¢
with Mustard 13-oz. can	39¢
Deviled Ham Libby's—All Ham 3-oz. can	19¢
Wilson's Mor Luncheon Meat, 12-oz. can, 51¢	
Corned Beef Wilson's 12-oz. can	41¢
Pumpkin Libby's—For Pies, Custard No. 2 1/2 can	19¢
RINSO New! Rain-Soft Giant Pkg.	55¢
CALO Dog Food 2 1-lb. cans	27¢
DIAL Deodorant Soap 2 reg. cakes	25¢
2 bath cakes	39¢

Case-Swayne Bean Barrel Sale Chili Beans, Butter Beans, or Pork & Beans	2 15 1/2-oz. cans	19¢
Apple Land, Fancy Gravenstein Applesauce	2 No. 303 cans	23¢
TUNA Star Kist Chunk Style	No. 1/2 can	29¢
CORN Pictsweet Cream Style	No. 303 can	15¢



Prices Shown are Guaranteed through MONDAY, Dec. 17th

1330 El Prado, Torrance

All A&P Stores Closed Sunday Taxable Items Subject to Tax