

UP SHE GOES . . . Being raised into vertical position by two hydraulic rams is the 95-ft mast of this portable drilling rig designed by the National Supply Co. Inside telescopic section will then be elevated by the draw works locked in position and guyed. When in use, rotary table is braced to trailer frame and the latter rests solidly on jacks. Built for the D. & D. Drilling and Construction Co., the unit incorporates a 200 input horsepower, torque-converter drive. Known as the Ideal Type T-2, this drilling rig and accessories is being used for servicing numerous wells in eastern Venezuela.

Films Taken in Mexico To Be Shown at Church

A Latin American missionary, Rev. Dean Duncan, will present sound films and tell of the work among orphans in the heart of Mexico at the Torrance Assembly of God Church on Friday, November 16, at 7:30 p.m.

The newly-elected representative will also depict the work of the well known Rev. Robert Ferris.

Those who are interested in missions are invited to see and hear of the work being done among the Latin American people.

Arranging the program was Rev. Ida W. Sande, pastor.

The church is located at 1317 Cravens avenue.

BLEACH AGENT

Hypochlorite is the chlorine compound most used for bleaching cellulose materials such as wood pulp, many textiles and other related products.



AT GATEWAY . . . Pvt. Lester L. Wear, 17, son of M. B. Wear, 21012 Shearer street, is completing his Air Force Basic Airman Induction course at Lackland Air Force Base, the "gateway to the Air Force."

EARLY FREEZER

Fish were shipped frozen in blocks of ice in 1868.

TIMBER VALUE

Timber resources on public domain of the U.S. has an estimated value of \$50 million to \$100 million.

GEESSE REFUGE

The national wild life refuge here is a haven for wild geese.

NOVEMBER 15, 1951

TORRANCE HERALD

Eleven

GAZING FEES

Colorado has 11 national forests and one state forest. Grazing fees on these ranges comprise the largest item in national forest receipts.

NEW VITALITY FOR YOU

Through My Methods

My methods can mean new pep and energy for you. Call us for an appointment today!



YOUR SPINE . . . Literally the Backbone of Good Health!

DR. R. A. LARSON D. C.
1110 SARTORI AVENUE
Phone Torrance 2130
TORRANCE, CALIF.

Letters To The Editor



Dear Editor:
Did you know that the California Humane Society (animal shelter) has better vehicles to go around picking up dead animals in, than lots of "human ambulances?" I think that is a "human-dolar political racket." Who gets all that money?

MARY PRICE

Torrance Airman Reports For Duty in Florida

Otis C. Tyson Jr., airman apprentice, USN, son of Mr. and Mrs. Otis C. Tyson of 603 Pine drive, reported for duty at the U.S. Naval Air Technical Training Center, Jacksonville, Florida, where he is attached to Aviation Ordnanceman School as a student.

Tyson, who entered the Naval service May 11, 1951, received his recruit training at the U. S. Naval Training Center, San Diego. Before entering the Navy he attended Marshall High School, Los Angeles.

4-H STRENGTH

There are about 82,000 4-H clubs in the U.S. with 1,850,000 members and 225,000 volunteer leaders.

TURKEY FEED

A turkey raised to market age in about 28 weeks requires between 75 and 100 pounds of varied feed.

Your Mayfair Milk may be a little late Saturday . . .



all hands are going to the YMCA breakfast

JOIN US!

Saturday is a very important date at the Torrance YMCA. It's the annual fund-raising breakfast and open house. The Mayfair Creamery is supplying the milk and cream for the breakfast—and plenty of support . . .

Every driver-salesman and men and women from the plant who can be spared will be there—so as long as your milk may be a little late Saturday—why don't you join us if you can—it's a good cause and you'll meet many of your neighbors there. Saturday from six till noon.

MAYFAIR
"it's good" **MILK**

MAYFAIR CREAMERY 20301 WESTERN AVE., TORRANCE, CALIF., TORRANCE 1887

STORE HOURS FOR THANKSGIVING!

HINCKLEY'S WILL REMAIN

OPEN
WEDNESDAY NITE
(THANKSGIVING EVE)
'TIL MIDNIGHT!
CLOSED ALL DAY
THANKSGIVING!

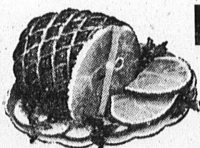
"The Super Market With the Country Store Flavor"

HINCKLEY'S

LOCATED AT 24020 NARBONNE — LOMITA 444 SPECIALS FOR THURSDAY, FRIDAY and SATURDAY NOVEMBER 15, 16, 17

WE ARE A GROUP 4 MARKET! STORE Fri., Sat., Sun.—8 a.m. 'til Midnight
HOURS: Monday, Tuesday — 8 a.m. to 10 p.m.

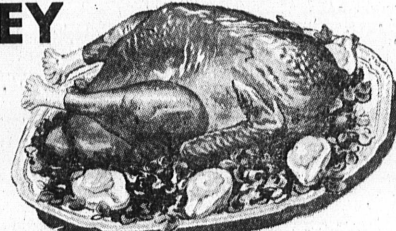
For Your Thanksgiving Dinner LET'S TALK TURKEY



To our old friends and customers, the quality of our Turkeys need no introduction . . . BUT!!! To you dear welcome newcomers we say that your first Turkey from the FAMOUS HINCKLEY MEAT DEPARTMENT will insure you the happiest holiday eating ever.

Not only Turkeys, but Chickens, Rabbits, Hams and a large selection of U. S. CHOICE BABY BEEF (Mannings) as well as Eastern Grain Fed Pork awaits your selection at this family "Superette" Market.

And remember that you can shop Wednesday (Thanksgiving Eve) 'til MIDNIGHT for your last minute holiday needs. CLOSED all day Thanksgiving Day!!



U.S. CHOICE—For Broiling
RIB STEAKS 79¢
EASTERN GRAIN FED
PORK CHOPS 59¢
BOSTON BUTT
PORK ROAST 49¢

CUDAHY'S GOLD COIN
SLICED BACON 39¢
TENDER—THIN CUT
PORK LIVER 29¢
FOR STEWING or BRAIZING
BOILING BEEF 37¢



C and H Pure Cane, 1-lb. Box
POWDERED Sugar 2^{FOR} 23^C
OR BROWN

S & F
COFFEE All Grinds 79¢

Ocean Spray CRANBERRY
SAUCE 1-lb. Can 2^{FOR} 33^C

PILSBURY'S—9-oz. Pkg.
PIE CRUST MIX 2^{FOR} 25^C



WINES
MIXES
and
BEERS

Sold Ice Cold
in Case Lots



HERE'S A GOOD BUY!
CARNATION MILK 2^{FOR} 25^C

BEST FOODS—Full Quart
MAYONNAISE 69¢

Large 2 1/4 Can
PUMPKIN 2^{FOR} 29^C



TOSHI'S GARDEN FRESH fruits-vegetables

FRESH
CAPE COD

CRANBERRIES
22^C lb.

FRESH RED EMPEROR
GRAPES 5^C lb.

FANCY KEY WEST
RED YAMS 2 lbs. 19^C

NEW CROP
BABY **WALNUTS** 28^C lb.

LIMIT RIGHTS RESERVED