

AL ROYER'S HITCHING POST
"TEXAS TINY"
Western Hit Parade Band
Sat. 1 p.m. to 4 p.m.
Tune in KFOX every night 11:30-12:30
Dancing EVERY Sat. and Sun.
Afternoon
15513 So. Western, Gardena

Quarterly Interest
... Current Rate on All Accounts
is 3% Per Annum. Each Account
Insured up to \$10,000.
LINCOLN
SAVINGS AND LOAN ASSOCIATION
SINCE 1925
615 S. Spring St., Los Angeles, Trinity 6543
Roy P. Crocker President
Charles F. Rippey Vice President

let us make
personal holiday
greetings for you... *on Kodak Christmas Paper*

This is a sensational new type of Christmas Greeting... there's a choice of cover designs in color, and your own snapshot is printed—considerably larger than contact size—on the inside. Bring in your favorite negative, and we'll make up as many of these greetings as you want.

A.I. Photo Service
1312 Sartori Ave. Torrance 1132

WESTERN AUTO SUPPLY CO.
TV SALE

Coronado "Catalina"
17-INCH Rectangular 'Black' Picture Tube
Save \$70! **\$169.95***
FORMERLY \$239.95
FED. EXCISE TAX INCL.

- AUTOMATIC FREQUENCY CONTROL
- STATIC-FREE "PM" SOUND CONTROL
- LEATHER COVERED CABINET

(Mahogany cabinet, slightly higher in price)
*Plus \$10.00 for full one year Protection Plan on Tubes and Parts.

FREE HOME TRIAL ON ALL TV SETS

SALE!
YOU SAVE \$50!
Reg. \$399.95 17" Console
\$289.95*
Fed. Exc. Tax Incl.

Features a continuous type tuner which provides 12 channel operation, automatic gain control. The handsome cabinet is of ribbon-stripped, hand-rubbed mahogany veneer.
*Plus \$10.00 for full one year Protection Plan on Tubes & Parts.

WESTERN AUTO SUPPLY CO.
1269 SARTORI
TORRANCE
Phone. 265

ALWAYS BETTER BUYS AT

TARTARS IN FINAL BAY LEAGUE TILT

Meet Normans Here Friday In Decider

The Torrance High School football team has less than a week to bring home the football bacon.

Tomorrow evening at 8, the Tartars will kick off against Beverly Hills here in the final Bay League tilt for the season, and next Wednesday evening at the same hour, they will reopen the long quiet rivalry between Torrance and Narbonne on the gridiron.

After that, it's basketball. For the first time against any league opponent this year, the Tartars will be at full strength for the encounter. At all previous games, one of several members of the squad were nursing sprains, bruises, and cuts as a result of the previous week's game.

Back Charlie Camou has been bothered most of the season with leg injuries. Jim Murphy was out for the season after breaking his ankle in the Oxnard game October 5. Harry Bayliss has been favoring an ankle injured at La Jolla, and others on the squad have suffered many and varied aches and pains.

All are slated to be in top form for the Beverly Hills game tomorrow night, however, and Joe Fan may see the real Tartar team for the first time this year.

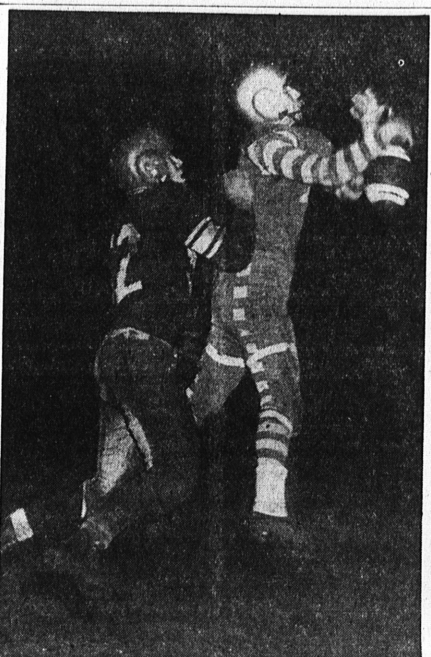
For Coach Cliff Graybehl and his assistant, Vern Wolfe, the season hasn't been exactly stupendous. The Tartars have posted victories over Oxnard and Leuzinger, while losing to Glendale Hoover, Inglewood, Santa Monica, La Jolla, and Redondo. The Oxnard, Glendale, and La Jolla games were not league games.

Tomorrow night's game could hardly be called the "Battle of the Giants," as the Beverly Hills Normans have had just about the same results in the league as the Tartars. The loser of tomorrow's Donnybrook will probably win the undisputed possession of the bottom position on the Bay League totem pole.

Wednesday night's game between the Tartars and the Gauchos should be a cinch for the Tartars, as the Gauchos squad has been riddled with injuries this year. The Narbonne squad has scored only once in Eastern Marine League play this year, and has no victories to its credit.

Kickoff time for both games is 8 p.m. at the Torrance High School stadium. A ticket gate on Plaza Del Amo, set up last week by school officials, will continue for these two games, according to Principal John Steinbaugh.

TORRANCE HERALD Sports



NEAR MISS... End Larry Roy (with tongue sticking out) gets his hands on a long Bill Crawford pass, but he couldn't pull it in. The Redondo Seahawks blanked the Tartars 7-0. (Herald photo by Dick Palmer)

Bill Norton Wins Stock Car Classic

Bill Norton of Gardena won the 100-mile Grand National Stock Car race Sunday at Carrell Speedway, driving a 1951 Mercury.

A crowd of 7600 saw favorite Forty Flock of North Carolina go out on the 80th lap when a broken gear forced him to quit the race. He had led the pack until forced out.

CAR STEEL

About 60 tons of steel are required to construct a modern Pullman railway car, except for those models that have bodies made of aluminum.

Gridders to Try For Win With Dads on Bench

Dads of the varsity gridgers will be in for a special view of the game against Beverly Hills here Friday night, it was announced by Torrance High School officials yesterday.

Coming in for their share of the glory at the games, the dads will be seated on the players' bench during the game.

Special halftime activities by the Torrance High School band under Abe Milstein and Ray Parrish, will honor the gridgers' fathers.

This will be the first time for such recognition, officials say.

FULL OF HOPS

California, Oregon and Washington lead the U.S. in production of hops.

COSTLY ICE

First commercial ice in the U.S. was cut from lakes and cost \$1 per pound.

WE PAY HIGHEST MARKET PRICES
—For—RAGS—WASTEPAPER METALS
Small or Large Quantities

TORRANCE METAL PRODUCTS
1890 TORRANCE BLVD.
Torrance 2292-2293
Nev. 6-2619

STEEL RATIO

About 14 pounds of manganese are needed for each ton of steel produced.

RAIL COSTS

Class I railroads during 1951 will have spent for new equipment, roadway and building about \$1,376 million, which represents an increase of about \$355 million over the 1950 mark.

WORRIED? NEED HELP?

COMPETENT ASTROLOGER

WITH 35 YRS. EXPERIENCE WILL IF YOU SOLVE YOUR PROBLEM. COMPLETE BIRTH DATA & STATE YOUR PROBLEM FULLY. ENCLOSE \$1 FOR INDIVIDUAL & PROMPT PERSONAL REPLY TO HARMONY PEARL, P. O. BOX 754, LOS ANGELES 35, CALIFORNIA.

HARDY-WARE by **TORRANCE hardware**

IT'S A SHAME THEY DON'T MAKE MORE TWO DOLLAR BILLS.
THEY'RE SO HANDY FOR BUYING FIFTY CENTS WORTH OF ANYTHING!
STICK TO **TORRANCE HARDWARE** YOUR MONEY THERE THAN ANY OTHER PLACE.

TORRANCE HARDWARE
"WE GIVE S.D.H. GREEN STAMPS"
Chas. V. Jones, Owner
1515 CABILLO • Phone 1480 • FREE PARKING

UNION PACIFIC RAILROAD
CHICAGO
\$55.44 PLUS TAX
In Coach one way from Los Angeles; \$89.40 round trip

Los Angeles Limited
(between Los Angeles-Chicago)
Reserved seats in streamlined Coaches; Lounge Car for Coach passengers; delicious Dining Car meals. Also through Pullmans to New York City, Chicago, St. Paul-Minneapolis; Lounge Car for Pullman passengers. No extra fare!

San Pedro:
805 So. Pacific Ave.
Phone: Terminal 2-7531

DICK BARTON
CHRYSLER-PLYMOUTH
SALES—PARTS—SERVICE

NOT in 1952...but NOW!

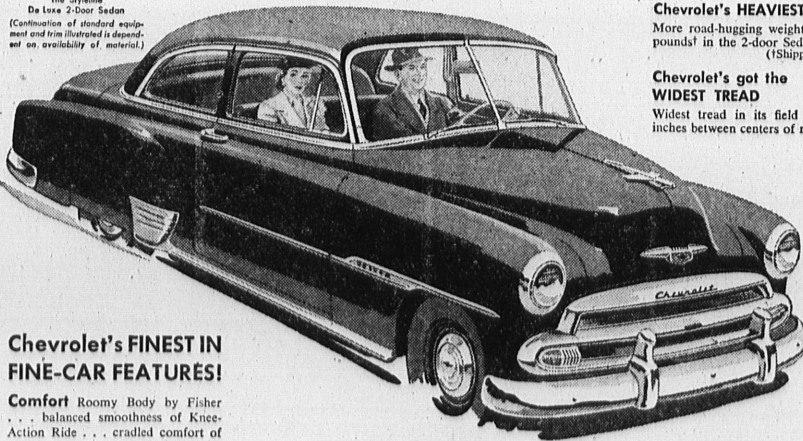
- * 180 Horsepower V-8 Engine
- * Hydrazide (Hydraulic Steering)

SEE CHRYSLER'S SARATOGA NEW YORKER and IMPERIAL at **Dick Barton's NOW!**

1885 TORRANCE BLVD.
TORRANCE 606

More People Buy Chevrolets Than Any Other Car!

Size it up and you'll see why!



Chevrolet's FINEST IN FINE-CAR FEATURES!

Comfort Roomy Body by Fisher... balanced smoothness of Knee-Action Ride... cradled comfort of Center-Point Suspension.

Safety Powerful Jumbo-Drum brakes, largest in the field... Safety-Sight Instrument Panel... sturdy Fisher Unisteel Body.

Handling Ease Experience the alert responsiveness of Chevrolet's Valve-in-Head engine... the easy action of Center-Point Steering.



America's Largest and Finest Low-Priced Car!

PAUL'S CHEVROLET

1640 CABILLO, TORRANCE
AUTHORIZED DIRECT FACTORY DEALER SERVING TORRANCE, LOMITA, AND WALTERIA
PHONE TORRANCE 606

Chevrolet's LONGEST

Tops all others in its field with a sweeping 197 1/2 inches over-all.

Chevrolet's HEAVIEST

More road-hugging weight... 3110 pounds! in the 2-door Sedan. (Shipping Weight)

Chevrolet's got the WIDEST TREAD

Widest tread in its field... 58 1/2 inches between centers of rear wheels.

Finest Automatic Transmission* in the low-price field...

POWER Glide

Velvet-smooth because oil does it all!... It's a new experience in driving!

*Combination of Powerglide Automatic Transmission and 100-h.p. Engine optional on De Luxe models at extra cost.