



YOU

- deserve a better car!
- need good transportation!
- owe it to yourself!

And Your Loved Ones!

- Can Buy a TOP QUALITY CAR From Walter Linch At YOUR OWN PRICE!!

See Linch for Dependable Safe Cars and Trucks - BUY TODAY! Tomorrow May be too Late!

USED CARS

Top quality Used Cars are never easy to find. The buyer must depend on appearance and the dealer's willingness to guarantee. The Linch Personalized Guarantee is the best! And Linch is only a few moments from your front door when you need service.

THE BUYER IS KING AT WALTER G. LINCH



1951 DODGE CORONET 4-DOOR SEDAN

Beautiful two-tone Dover gray and Pitcairn blue—Outside sun visor—Fender skirts—Gyroscopic transmission—Wheel covers—Many extras—And only 2102 actual miles—New car guarantee—You will be its first registered owner.

\$2193⁰⁰



1950 PLYMOUTH SPECIAL DELUXE SEDAN

Like new—Low mileage—All-vinyl seat covers—Easy to keep light gray finish—Reflects former owner's loving care—Fully guaranteed in every respect.

\$1597⁰⁰



1949 DODGE CONVERTIBLE ROADSTER

A youthful car for the young-in-spirit—Practical Dover gray with light tan top—Excellent tires—Red vinyl upholstery—Wheel covers—Spotlights—Radio—Full Personalized Warranty.

\$1293⁰⁰



1948 MERCURY CONVERTIBLE COUPE

Just as you would expect, a deep rich maroon with a brand new light tan top—White sidewall tires—Radio—Heater—Automatic top—Seat covers—You have always wanted a convertible—Here is your opportunity.

\$1197⁰⁰



1947 CHEVROLET TOWN SEDAN

Expensive metallic green finish—This is one of the most sought after of all Chevrolet models—Will make you and your family very happy.

\$743⁰⁰



1946 HUDSON SUPER 2-DOOR

We have gone all-out to make this car the most special "Special" ever offered—Nearly new engine—New cool green finish—New plastic seat covers—Heater—You must see this car, whether you are a Hudson buyer or not.

\$697⁰⁰

1942 BUICK SUPER 4-DOOR SEDAN

Rich dark gray finish—Radio—Heater—Seat covers—Directional lights—Buick's most popular model, the Super—Now you can afford a Buick for your family car.

\$393⁰⁰

1941 FORD V8 4-DOOR

Even if there were no selling points this car would be a steal—But here we have a good motor—Radio—Heater—Spotlight—A solid body—And remember, it's a '41!

\$197⁰⁰

1940 DODGE BUSINESS COUPE

Heater—Fog Lights—A bargain.

\$93⁰⁰

AND 49 OTHERS AT EQUALLY ATTRACTIVE PRICES

Fully Guaranteed By Our Personalized Warranty!

WE MEET AND BEAT LOS ANGELES PRICES

LOW BANK TERMS

1949 Plymouth Station Wagon



1949 Studebaker Club Coupe

1947 Ford Convertible Coupe

1947 DeSoto Convertible Coupe

1946 Plymouth 4-Door Sedan

1947 Chevrolet Town Sedan

1947 Dodge 4-Door Coupe

1949 Dodge Coronet 4-Door

1949 Plymouth Club Coupe

1949 Dodge 4-Door Coupe

1940 Oldsmobile 2-Door

1941 Pontiac 4-Door

1935 Chevrolet 4-Door

1939 DeSoto 4-Door

1941 Dodge Town Sedan

1939 Chevrolet 4-Door

1937 Plymouth 4-Door

1940 Chevrolet Coupe

1941 Oldsmobile Club Coupe

1937 Plymouth Coupe

1939 Buick Convertible

USED TRUCKS

THE BUYER IS KING AT WALTER G. LINCH

BANK TERMS

1951 CHEVROLET 1/2-TON PICKUP

Only 2800 actual miles—Deluxe Cab—Rear bumper—Pleasing light green in color—Our Personalized Warranty will give you a better than New Car Guarantee for your protection.

1949 CHEVROLET 1/2-TON PANEL

A typical Linch value, reflecting the wonderful care of a former owner—Heater—Spotlight—Backup light—Auxiliary seat—Rich blue finish—The answer to the demands of the most exacting buyer.

1948 CHEVROLET SEDAN DELIVERY

Dignified light gray finish—Heater—Auxiliary seat—Grille guards—in perfect condition—A beautiful light commercial unit, ready to answer your delivery problems.

1948 CHEVROLET 1-TON STAKE

Beautiful dark green finish, like new—High tread 8-ply rating tires—Clearance lamps and state required splash flaps—New upholstery—4-Speed transmission—Long arm mirrors—Low mileage.

1948 DODGE 1/2-TON PICKUP

6.50x16 6-ply tires—4-Speed transmission—Deep box—Rear bumper—Radiator grille guard—Custom cab with corner windows—Spotlight—Electric wipers—Will be painted to your specific locations.

You purchase a truck to make money. You will find that Linch is the one dealer who knows what size and type will fit your job. No wonder Linch has become truck headquarters in the South Bay. Come in and let him help you select your truck.

WE MEET AND BEAT LA PRICES

1948 DODGE 1 1/2-TON STAKE

Handsomely finished in Waterway Blue—A massive rugged truck to solve your tough hauling problems—Factory stake body—7.50x20 duals—Overloads—Radio—Air horns—For the careful buyer who demands appearance, power, and dependability.

1946 DODGE 1/2-TON PICKUP

The most popular model of all—Low initial cost and low maintenance makes this truck a money-maker for you—3-Speed transmission—Low bed—6.00x16 tires—Good condition.

1941 DODGE 1 1/2-TON STAKE

A fine light 1/2-ton, in exceptionally good condition—Motor nearly new—Good body—New seat upholstery—Finishing excellent—A low cost unit for economy hauling.

1948 STUDEBAKER 1 1/2-TON STAKE

A big red brute, ready to go to work for you—Heavy duty SABCO body with high stakes and tarp bows—7.50x20 duals—Low mileage—Locally owned—in fine condition.

THE BUYER IS KING AT WALTER G. LINCH



SINCE 1922 — South Bay's Oldest Dealer! DODGE — PLYMOUTH

WALTER G. LINCH

OPEN AIR DISPLAY

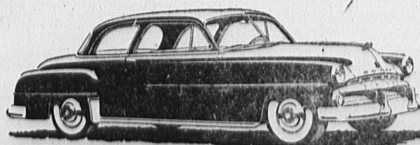
FROM 8:00 A.M. UNTIL 9:00 P.M.
316 S. PACIFIC COAST HWY.
Next to Robert's Market

FR. 2-2122

NEW CAR SHOWROOM

FROM 8:00 A.M. UNTIL 7:00 P.M.
312 SOUTH CATALINA
Across from Elks' Club

FR. 2-2122



1951 DODGE CLUB COUPE



Curtailment of automobile production due to material restrictions has resulted in a shortage of some body styles. Linch, with customary foresight, has protected his customers by buying every available scarce model. While they last they will be delivered to you on terms better than you ever dreamed of.

NEW DODGE

THE BUYER IS KING AT WALTER G. LINCH

\$618⁵³ OR YOUR OLD CAR Down

\$74.90 Month

THRILL TO THE GLIDE OF THE ORIFLOW RIDE

New Plymouth \$516⁹⁹ OR YOUR OLD CAR Down

\$62.61 Month

THE JEWEL OF THE LOW PRICE FIELD

NEW Dodge Trucks \$370²⁰ OR YOUR OLD CAR Down

\$43.48 Month

ONLY DODGE BUILDS Job Rated TRUCKS

LOW BANK TERMS

* Detroit Delivery—Tax and License Extra.