

## Seek Small Dog That Bit Two Children Here

Search for a dog which bit two small children here last week was still under way yesterday, according to Mrs. William C. Coburn, of 1908 Arlington avenue.

Mrs. Coburn reported to police and health officials that a small "terrier-like" dog bit her five-year-old son Billie and seven-year-old Carol Greer, of 1824 Arlington avenue, last week. No trace of the dog has been found.

The dog was described as small, short-legged, chubby and white.

"It could have been terrier with a touch of dachshund," Mrs. Coburn said.

If not found soon, the children may have to undergo the long, painful series of anti-rabies serums.

## TEEN AGE DANCES

EVERY FRIDAY NIGHT

8 p.m. to 11 p.m.

Open to All

GARDENA YOUTH CENTER

1651 Market Street, Gardena

MUSIC FURNISHED BY

Popular FREDDIE GREY

and His Orchestra

Snack Bar

CASUAL DRESS

DONATION 50c

## STADIUM

HEY KIDS!!!

Don't Miss the Free "Man from Mars" Make, to the First 200 Kids Saturday Matinee, October 20th

NOW PLAYING

Burt Lancaster

Charles Bickford

JIM THORPE

ALL AMERICAN

plus

Low Ayres - Marilyn Maxwell

NEW MEXICO

In Color

SUN. - MON. - TUES

William Holden - Nancy Olson

Frank Lovejoy

FORCE OF ARMS

plus

Mickey Rooney - Sally Forrest

THE STRIP

TORRANCE

FIVE CARTOONS

THREE SERIALS

At Our Special

KIDNIE MATINEE

Every Sat.-Doors Open 12:30

All This Plus Our Regular

Double Feature Program

ADULTS, 50c - KIDS, 10c

Adult Supervision Always

NOW PLAYING

Russell Hayden - Victor Jory

BAD MEN OF ARIZONA

plus

Marsha Hunt

Buster Crabbe

BAD MEN OF NEVADA

SUN. - MON. - TUES

Doris Day - Jack Smith

Gordon McRae

ON MOONLIGHT BAY

Color by Technicolor

Rich' Danning - Marie Windsor

DOUBLE DEAL

GRAND

SPANISH PROGRAMS

Every Wed. and Sat.

JAPANESE PROGRAMS

Every Tuesday

Phone Torrance 269

GARDENA

NOW PLAYING

LOST CONTINENT

plus

HARD, FAST AND BEAUTIFUL

SUN. - MON. - TUES

IRON MAN

plus

JIM THORPE

ALL AMERICAN

PARK

FRI. - SAT. - SUN.

SAVAGE DRUMS

KENTUCKY JUBILEE

ADULTS, 50c - KIDS, 10c

## Post Avenue Motors To Open This Weekend

Post Avenue Motors, offering fine quality used cars and expert automotive repairing, will open this weekend in the former Mayfair Creamery location on Post avenue.

More than \$75,000 has been invested in the new business by the owners Wade Glenn, for the past three years sales manager of Rick's Nash Agency and Carl Billstein, for four years with the Public Loan Company.

The concern is located at 1338 Post avenue across from Roth's Market.

The new owners will offer only the finest used cars, all of which will undergo a bumper-to-bumper checkup and repair in the complete automotive shops now being installed.

Services offered include the use of a front end alignment machine, scientific motor tune-up testing, stands, and repainting and upholstery by experienced workers. The owners have installed the Bean Visualizer for front wheel alignment work. Carburetor service and repair is also offered.

Installed also is a new high-pressure lubrication system.

Post Avenue Motors will stock the well-known national brand of General tires and tubes as well as batteries and other automotive equipment.

To be let within the next few days is a contract for complete

remodeling the front of the building to make it one of the most modern in the city, the owners said.

The owners anticipate using both inside showrooms and outside lots for the display of their late model used cars.

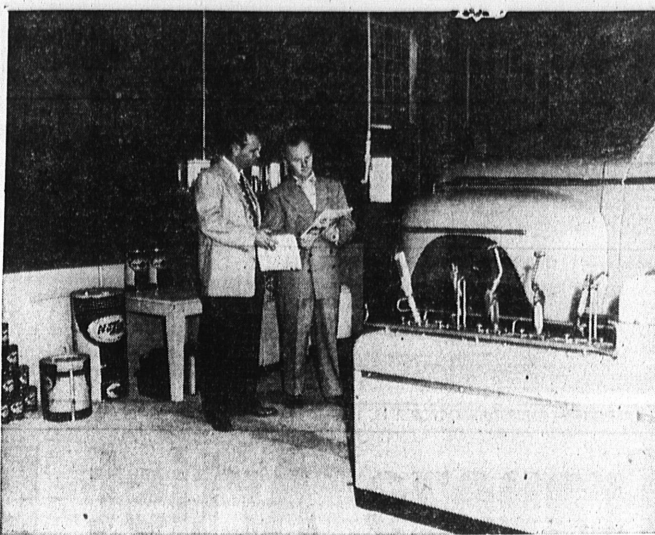
Hours for the sales department have been set from 9 a.m. to 9 p.m., with the service department remaining open from 8 a.m. to 5:30 p.m.

In charge of the service department will be Ray Paine, former service manager for Nash, Studebaker and General Motors cars.

When the company is in full operation, a staff of 15 employees will be retained by Glenn and Billstein.

The owners invite those in need of service to take advantage of a 12-month credit plan provided for those who find it difficult to make single payment repair bills.

Used cars may be purchased on a low down payment plan, with 18 months to pay. Bank term credit is available through CIT.



MODERN EQUIPMENT . . . On a pre-opening inspection tour of their new Post Avenue Motors are Wade Glenn and Carl Billstein, owners. Many pieces of modern automotive testing and repairing equipment have been installed by the owners to make the new automotive center one of the most completely equipped in the area. (Herald photo).



TOKEN AWARD . . . Mrs. Lyle O'Hara (left) accepts a token award from Mrs. Ed Schwartz, division chairman of the Community Chest, for being the chairman of the first section to report "Completely Organized!" Torrance's one-day chest drive is slated for Monday, October 29. (Herald photo).

## ...Chest Drive

(Continued from Page 1)

Schwartz, division chairman, for becoming the first section chairman to get the required number of workers for her section.

Commerce and Industry Chairman Sam Levy has his organization at work organizing in-plant campaigns in firms of 10 or more employees. Some of the campaigns in plants have already started, Levy said, and the others are slated to begin soon. The bulk of these should be finished before the residential campaign opens.

Another phase of the Chest campaign, the advance gifts appeal headed by Mayor Robert Haggard, is also under way. Haggard has eight volunteers working with him on the advance gifts committee. They include George W. Post, John Melville, Russell Lund, Paul Loran, Dr. Raymond A. Larson, Taylor Whitney, Dr. Arthur Berke and Dr. Gerald Eastham.

## Hospital Admitting Ward Opens

Harbor General Hospital's new \$92,000 admitting ward was scheduled to be put into use at 7 a.m. today, according to C. Leonard Edney, director of General Services at the hospital.

The new unit contains 7200 square feet and quadruples the area heretofore available for this purpose, he said.

Included in the new unit are wards for 12, two surgery rooms and a doctors' lounge. Heating in the building is through hot water radiant tubes imbedded in the floors of the structure.

## ...Cadonas

(Continued from Page 1)

and was hurt so badly he could never return to the trapeze on which he had thrilled thousands by doing triple somersaults into brother Lalo's waiting hands. Five months later Lalo fell in Paris and was forced to retire from the trapeze.

He settled in Waleria to join his brother-in-law in the wheel alignment business, operating the old Adolph and Codona shop on Hawthorne boulevard where Ziske's Market now is located.

His sister, Mrs. Adolph, who began her trapeze career at the age of six when she tramped with both her brothers, came to Waleria in 1922. She now lives at 24245 Hawthorne boulevard.

Visit interesting, colorful . . .

## SAN FRANCISCO

Stay at the Hotel Whitcomb, at the Civic Center—in a theater and shopping district, in direct line with both great bridges.

Bring your family for a week-end or longer, and enjoy the distinctive Hotel Whitcomb cuisine and service.

500 Rooms from \$4.50 Single; from \$7.00 Double

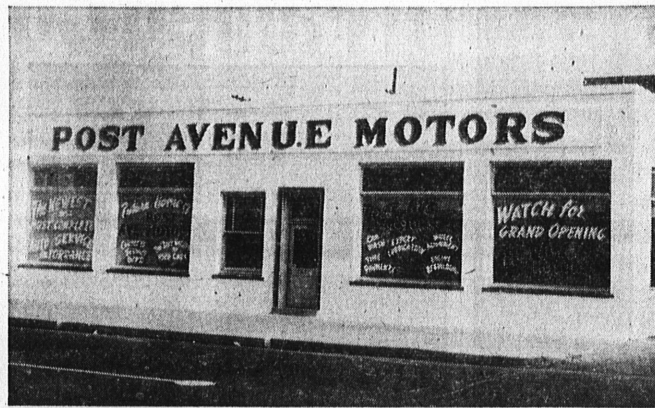
MARKET STREET at 9th

Garage in Building

HOTEL WHITCOMB

KARL C. WEBER

President and General Manager



OPENS THIS WEEKEND . . . Pictured is the new Post Avenue Motors which will open officially this weekend. Free lube jobs are offered by the management. The building formerly housed the Mayfair Creamery.

## Sentinels Slaughter Tartars in Opener

Torrance's 1951 football team which had shown several flashes of power in downing a strong Oxnard team two weeks ago had nothing but trouble last Friday night in its Bay League debut against the powerful Inglewood High School eleven as the Sentinels romped to a 54-0 slaughter at Inglewood.

A slow first half saw the Sentinels score only once when Mickey Raftery went nine yards around end into the end zone. The conversion failed and the half-time score was 6-0.

After the second half had been under way about three minutes, the Sentinel's Don Cornell caught a punt from Harry Bayless on his own 30 and raced 70 yards down the sideline for a t.d. From that point on, the game turned into a track meet with first Cornell, then Raftery, then Jim Carmichael racing for long gains or snagging the passes of q.b. Ronnie Knox.

CRAWFORD OUT  
Ejection of Bill Crawford from the game near the end of the second quarter for a personal foul hurt the Tartar offense considerably. With Clarence Cadonas seeing only limited action because of a leg injury, and Jim Murphy out of the lineup with a broken ankle, Beryl Jones was the only backfield veteran on hand for the second half of the affair.

Bayless showed several sparks of running power again as he did against Oxnard, but the Sentinel defense was too tight to open many holes for him. Back Ted Marcoux made a number of valiant tries with the pigskin, but there was just no place to go that wasn't covered by green-jerseyed Sentinels.

End Larry Roy, who looked good catching a t.d. pass from Crawford against Oxnard, was never able to get away from the three and four defenders sent out with him every time he went out on a pass play. Several perfect strikes were tossed to him by Jim Ferrar and Jack O'Call during the second half, but he didn't have a chance to get out of the trap and get the ball.

GRAY HURT  
The loss of Bill Gray during the second half with an arm injury weakened the Tartar de-

I KATCHUM  
FISH DINNERS  
"Eat With Charley"  
DANIELS CAFE  
1625 Cabrillo — Torrance

## Maps for New 100-Home Tract Studied by City

Presented to the Planning Commission last evening were tentative maps setting up a new subdivision of more than 100 homes to be built southwest of the intersection of Crenshaw boulevard and Pacific Coast highway.

The property, which is part of the historic Weston Ranch, is to be developed by the January Company of Long Beach, city officials say.

City Engineer Jacob Joseph indicated yesterday that drainage of the area might be a problem, but he said he was sure that the development could be started.

Also slated to come before the Planning Commission last evening were new designs for Longren Aircraft's remodeling program, which have been altered to meet the conditions of the variance set down by the commission and the City Council.

## JAPAN REFORESTS

Approximately 1,610,000 acres of land in Japan were reforested in 1949.

## Tartar Varsity To Be Guests Of Lions Club

Members of the Torrance High School varsity football team and coaching staff will be the guests of honor at the Annual Football Day Luncheon during the October 23 meeting of the Torrance Lions Club, according to Albert Posner, program chairman.

Posner is "dickering" with a well known college grid coach to be the guest speaker of the day.

Some 16 or 17 team members, as well as Coach Cliff Graybehl, are expected to attend the luncheon at the Ding How Cafe next Tuesday.

## Rip Carlisle Visits Here

Visiting Torrance friends this week is Seaman John "Rip" Carlisle, son of Mr. and Mrs. Thomas Brayshaw of 1415 Greenwood avenue.

Carlisle arrived here last weekend after making a trip to Greenland aboard the Carter Hall, LSD 3, the ship to which he is assigned. He reports they made the voyage from San Diego through the Panama Canal to Norfolk, Virginia, then to Greenland and back to Baltimore. His ship is now in dry dock in Baltimore.

An athlete at Torrance High last year, Carlisle joined the Navy last January 10. He will report back to his ship in Baltimore on October 30, he said.

## Torrance Herald

Established Jan. 1, 1914



Member California Newspaper Publishers' Association

1619 GRAMERCY—PHONE 444

Published Every Thursday

Torrance, California

Grover C. Whyte

Editor-Publisher

E. B. Brown, Business Mgr.

Jack O. Baldwin, Managing Editor

Reid L. Bundy, City Editor

Adjudicated a Legal Newspaper

By Superior Court

Los Angeles County

Entered as second class matter Jan.

30, 1914, at postoffice, Torrance, California, under Act of March 3, 1879.

Official Newspaper of City of Torrance

Subscription Rates

6 Months \$1.80 Months 50c

Anywhere in Los Angeles County

Payable in Advance

Outside Los Angeles County

Payable in Advance

## NATIONAL EDITORIAL ASSOCIATION



CHIROPRACTIC



Help for

## POOR DIGESTION

Many forms of chronic indigestion can be relieved or cured by my consultation. See us for a consultation.

Dr. R. A. Larson, D.C.

1110 Sartori Avenue

Phone Torrance 2130

Torrance, Calif.

## THE RAINS ARE COMING

If your roof is old, the sun and winds of the summer have probably worn some holes. NOW, before the winter rains begin is the proper time to give your roof attention. We carry a large stock of CELOTEX-EL KEM roofing and shingles. They have the highest quality and an assortment of beautiful colors.

We can send you a reliable roofer to estimate the cost of a re-roofing job or a new one. Phone Torrance 475.

## JOSLIN Lumber Co.

1782 W. Carson St. — Phone 475

Open All Day Saturday and Till Noon Sunday

For Your Convenience

THE MAN . . . . .  
**666**  
The ANTI-CHRIST of Bible Prophecy  
Read Revelation 13 Before You Come  
Uniquely ILLUSTRATED With Life Size Symbols  
Come and Appreciate Your Friends' Enthusiasm About  
These Lectures by Evangelist D. R. Guild  
Sunday, October 21, 7:30 p.m.  
ALL WELCOME!  
ALL SEATS FREE  
**THE GRAND THEATRE**  
1522 Cravens Ave. Downtown Torrance  
Also Friday, Oct. 19, 7:30 p.m. "What's Jesus Doing Now?"