

# NORTH TORRANCE TATTLER

By MRS. HELEN ALLISON  
Mailing 4-3430

North Torrance Elementary PTA members turned out in masse this week for the breakfast and white elephant auction held at the home of Mrs. Perry Sale, 17208 Ardath avenue. Around 10 o'clock approximately 35 ladies entered Mrs. Sale's back yard, and less than two hours later Auctioneer Mrs. Harry Van Belchem (who incidentally excelled in this line, had swelled the treasury by \$147. Mesdames Sale, Babbs, Sherwood and McLean kept the cups filled with steaming coffee while the gals tried to outbid each other. Principal Robinson had a standing 10-cent bid. Helen Ferrin went broke, but floated a quick loan and was back in the fun. Marion Ross, Helen Wiebe and Lyn Hale were among those going home loaded with their "sight-unseen" bargains.

Tiny paper tencups with each lady's name written on them, enabled friendly conversations to spring from each table. Without a doubt there will be a lot "cutting-up" going on in the neighborhood in the near future for Van Belchem sold key-chain scissors to all!

The NTCLA celebrated its second anniversary this week. The crowd was served by Myrtle Dyer with coffee and a piece of the beautiful cake, loaded with yellow roses. President Bert Johnson presented the gavel to the newly elected president, Jack White. (This gavel was made by Mrs. Bert Johnson's father, Mr. Eugene R. Kaar of Minneapolis, Minn.) Each new officer, and chairman outlined the things they hoped to accomplish in the coming year.

Community Church Chicle met at the home of Mrs. Ed Collins, 17025 Crenshaw boulevard, this past week and plans were made for a hahn dinner and bazaar to be at McMaster Hall November 30. Scrapbooks were prepared for delivery to the hospitals.

Mr. and Mrs. Arron Wiebe, 17303 Atkinson avenue, and Mrs. Louise Nickolson, 17003 Glenburn avenue, have been attending the services of Billy Graham at Hollywood Bowl, and were present at the showing of "Mr. Texas," a Christian movie.

All good things come to those who wait, or so thinks Mrs. Millie McFee, 17315 Atkinson avenue, after receiving her new blonde spinet this week. Hope the neighbors like piano music.

Congratulations to Mr. and Mrs. Frank Lush, 2715 West 174th street, who celebrated their wedding anniversary this week. Mr. and Mrs. Lush and Mr. and Mrs. M. A. Anderson enjoyed a delicious sea-food dinner at the Fish Shanty, in honor of the occasion.

Mr. Andy Irvin of 4239 West 178th place has been called to Canada, due to the illness of his mother.

On our sick list we have Ed Grimsley, 4320 West 178th place, and Mrs. Virginia Gatti, 4248 West 178th place. We wish them both a speedy recovery.

Mrs. Emily Burnham, mother of Mrs. J. R. Long, 17209 Cashmer avenue, has gone to New York to visit relatives.

Joyce Johnson, 2719 West 174th street, was a very charming 4-year-old hostess to a group of small friends in honor of her birthday Saturday. A very pretty cake was the highlight of the party. Pink and blue bonnets of paper, filled with candy, caught the children's eyes. Among those of this very young set attending were: John Gaw, Sonny Lush, Nancy Johnson, Benny Anderson, Stephen Kertune, Marilyn Halstead, Marlene Feynamik, and Sandy Phillips.

Mr. and Mrs. Arthur Briggs,

**I KITCHUM  
FISH DINNERS  
"Eat With Charley"  
DANIELS CAFE  
1625 Cabrillo — Torrance**

## Wife of National Supply Man Dies

Funeral services for Effie Elizabeth Kinkead, 63, of 1624 West 220th street, were held in the Stone and Myers Chapel here Monday afternoon with Rev. Clarence Miller, pastor of the First Methodist Church, officiating. A resident of Torrance for seven years, Mrs. Kinkead died at her home last Friday. She leaves her husband, Walter Henry Kinkead, a National Supply Company employee, and three daughters, Doris Maxine Kinkead of Oakland; Mrs. Betty Wille of Burbank; and Mrs. Virginia Vegt of Riva. One son, Darryl, a member of the U. S. Navy now stationed in San Francisco, also survives. Mrs. Kinkead was a member of the Methodist Church of Guide Rock Nebraska. Interment in Roosevelt Cemetery followed graveside services conducted by Reverend Miller.

**DICK BARTON  
CHRYSLER-PLYMOUTH  
SALES & SERVICE  
Now 180 H.P. V-8  
Chrysler Saratoga  
NOW ON DISPLAY  
See This New Lower Priced  
CHRYSLER V-8 at  
1885 Torrance Blvd. — Torrance 606**

## Three New Ceramics Classes Open

Three new, free adult classes in ceramics, open to all adults regardless of residence, are now being held in different sections of Torrance area.

Beginning and advanced students are welcomed to join these free groups. The Monday and

Thursday night groups meet in room 201 of Torrance High School. On Tuesday, class meets at the Seaside School, Seaside

Ranchos (off Highway 101), in Torrance. There is a giant kiln at the Seaside School for the use of these adult students. The Wednesday night class is held at the North Torrance Elementary School, four blocks

OCTOBER 11, 1951

TORRANCE HERALD

Seven

east of Crenshaw boulevard and 174th street. Classes in all locations start at 6:45. Students may learn to make cups, saucers, lamp bases, lazy

susans, ornamental pieces, candy dishes and ashtrays. Each student proceeds at his own speed and according to his own liking.

## SAFeway

What about Prices that are NOT in Safeway Ads?

Checking food ads is a good way to learn about low prices. But the ads can't tell the whole story. At best they include only a few of the items on your entire shopping list. So savings made on "specials" can easily be wiped out unless your purchases are made at the right prices.

That's why Safeway's pricing policy says that every item must be priced low. This means savings to you right down the line... not just on our advertised specials, but on everything. So start today to save at Safeway, where all prices are always low.

## MEXICORN

Niblets brand. Special low price!

## FLEET MIX

Unexcelled for biscuits. Priced low.

## SCOT TISSUE

Soft absorbent. Special price.

## SILK TISSUE

High quality at a special low price.

### BREAD & SPREADS

Fresh Bread Mrs. Wright's large loaf 20¢

White or wheat, sliced. (Small loaf, 15¢)

Cracked Wheat Bread small loaf 17¢

Mrs. Wright's. Freshly baked, sliced.

100% WHOLE Bread large loaf 20¢

Mrs. Wright's. Freshly baked, sliced.

Kern Grape Jelly 2-lb. jar 37¢

Kern Preserves Grape jar 37¢

(Apricot or Peach, 2-lb. jar, 39¢)

### YELLOW MARGARINE

Sunnybank brand. lb. 29¢

Foil wrapped quarters.

### CHUNK TUNA

Breast O'Chicken. 6 1/2-oz. can 27¢

For tasty salads.

### BLACK PEPPER

Crown Colony brand. 2-oz. can 39¢

(1-oz., 23¢; 4-oz., 77¢)

### OTHER VALUES

Ground Cinnamon 2-oz. can 14¢

Crown Colony brand. (4-oz. can, 25¢)

Salad Dressing Duchess Brand jar 37¢

(Half-pint jar, 21¢; quart jar, 63¢)

Hormel Chili CON CARNE 16-oz. can 38¢

With Beans

Monte Cristo Wine fifth 69¢

Port, Sherry, Muscatel, Pale Sherry.

Monte Cristo Burgundy, fifth, 55¢.

Monte Cristo Sauterne, fifth, 59¢.

Wine is offered only in Safeways

licensed to sell it. Taxes additional.

THIS IS CALIFORNIA WINE WEEK.

Light Globes Inside Frosted 40 or 60-Watt each 15¢

(15 or 25-watt size, each 14¢; 100-watt size, each 18¢; 150-watt size, each 22¢)

2 7-oz. cans 19¢

40-oz. pkg. 39¢

2 rolls 19¢

2 rolls 11¢

## Check These

## CHUCK ROAST

Tender, juicy, flavorful roasts, cut from shoulder of U. S. Government graded CHOICE Beef.

Blade Cut lb. 69¢ Arm Cut lb. 73¢

## BOILING BEEF RIB ROAST

(BEEF RIB STEAKS U. S. CHOICE lb. 82¢)

## WIENERS

Frying Chickens Manor House lb. 65¢

Eviscerated, cut-up. Gov't Grade A.

Pork Link Sausage In Bulk lb. 55¢

Pork Sausage Packed in Visking Roll lb. 49¢

Ground Beef Packed in Visking lb. 65¢

Corned Beef Boneless Brisket lb. 65¢

Serve hot or cold. Fine with cabbage.

Sliced Beef Liver lb. 79¢

Beef Hearts To Bake or Stew lb. 43¢

Morrell Pride Bacon lb. 53¢

or Cudahy Puritan Grade A, sliced.

Swift Premium Bacon lb. 63¢

Finest quality, sliced. Heat-seal pack.

Breaded Shrimp Pan 12-oz. 65¢

Jekyll Island brand. For deep fat frying.

## MEAT VALUES

To be sure of best values in meats... low prices on top quality cuts... shop at your nearby Safeway.

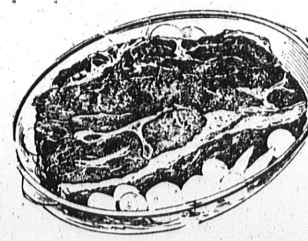


Plate Meat U. S. CHOICE lb. 29¢

Standing 7" Cut From First 6 Ribs, of U. S. CHOICE Beef. lb. 82¢

Somerset Brand, Skinless. No. 1 Quality, in Cello lb. 59¢

## Check These

## GRAPES APPLES CABBAGE BELL PEPPERS ONIONS

Flaming Tokays. Juicy, Red, Tasty. 2 lbs. 15¢

California Pippins, Make an Apple Pie Today. 4 lbs. 25¢

Utah Grown, Solid Heads, Fine Cooked With Corned Beef. lb. 3 1/2¢

Fancy Yellow. Fine to Cook or Use in Sandwiches lb. 3¢

## PRODUCE VALUES

For the season's finest fresh fruits and vegetables... dewy fresh from orchard and farm... shop at Safeway. Prices are low, too!

Concentrated 6-oz. Fine Flavor can. 18¢

Concentrated 6-oz. Makes 1 quart can. 11¢

Excellent Flavor 12-oz. pkg. 21¢

Baby Lima Beans 10-oz. pkg. 23¢

Fordhook Lima Beans 10-oz. pkg. 22¢

Sliced Strawberries With Sugar pkg. 29¢

## SAFeway

GIVE MORE... THE NEED IS GREATER  
SUPPORT YOUR LOCAL COMMUNITY CHEST

1301 SARTORI AVE., TORRANCE  
Open Thurs., Fri., Sat. Nights Until 9 p.m.

2171 PACIFIC COAST HWY., LOMITA  
Open Friday and Saturday Nights until 9 p.m.