

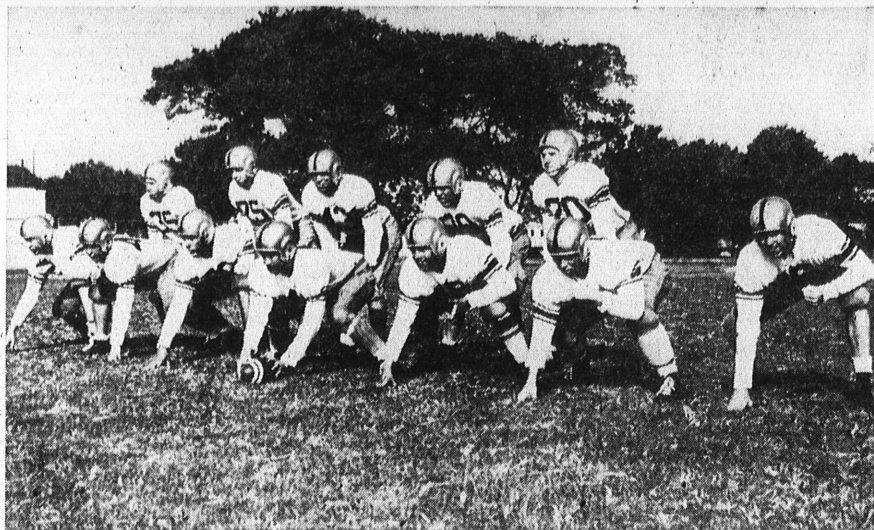
TARTARS READY TO OPEN GRID WARS

TRY CHARLEY'S
Chuck Wagon Steak
"Eat With Charley"
DANIELS CAFE
1625 Cabrillo — Torrance

WE PAY
HIGHEST
MARKET PRICES
For—RAGS—WASTEPAPER
METALS
Small or Large Quantities
**TORRANCE
METAL PRODUCTS**
1890 TORRANCE BLVD.
Torrance 2292-2293
Nev. 6-2619

Warrior Video Dates Listed For Fans Again

The El Camino Warriors will be seen in action during the coming grid wars on the following dates, college officials reminded this week.
October 6, vs. San Diego Junior College.
October 13, vs. Bakersfield.
November 3, vs. Long Beach City College.
November 10, vs. Santa Monica City College.
November 21, vs. East Los Angeles.
The games will be telecast over KRLD-TV.

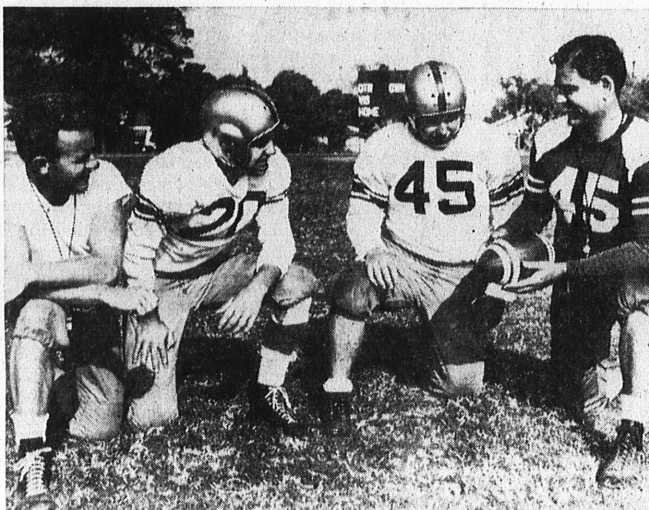


READY FOR GLENDALE . . . Counting the minutes until tomorrow night's kickoff are these men tabbed as probable starters for the Torrance High School's 1951 football debut. In the line, left to right, are Cal Browning, GeGe Johnson (captain), Bill Gray, John Spiller, Harvey Rushfeldt, Chuck

Bingham and Jack O'Cain. In the backfield are Jim Murphy, Ted Marcoux, Beryl Jones, Charlie Camou and Bill Crawford. Coach Graybehl has several combinations to work around the five backs. (Herald photo).

Regulations Available

Printed regulations governing public hunting on 11 waterfowl management areas operated by the Department of Fish and Game are available without charge by application to the Department's public information office, Ferry building, San Francisco.



THE BRAIN TRUST . . . In a strategy huddle over the coming game with Glendale Hoover are the coaches and captains of the 1951 Tartar Varsity. Left to right they are Vern Wolfe, backfield coach; Bill Crawford, alternate captain; GeGe Johnson, captain and Cliff Graybehl, head coach. Johnson barely nosed out Crawford for the captain's post when the squad voted last Friday. (Herald photo).

Gridders Open at Glendale

By REID BUNDY

The 1951 football season will get under way at 8 p.m. tomorrow in Glendale, so far as many grid fans around here are concerned.

At that time the Torrance Tartars will clash with the Glendale Hoover Tornadoes in the first game of the season for both teams.

Tartar fans who make that long trek to Glendale for the opener can expect to see anything tomorrow night. Both teams are unleashing new offenses, and anything could happen.

The Tornadoes used the Henderson Spread formation last year, and proved vulnerable to ed through time and again for the Tartar backs as they slash huge gainers.

T SCRAPPED

At the same time, the Tartars were using the T-formation last year, and had no good defense for such fleet-footed backs as Ed Hogan and Dick Frederick.

Both teams will spring forth with single-wing formations tomorrow night. Coach Ed Siminski, who is also making his grid debut with Glendale Hoover, has been plagued with injuries during the early practice sessions, but he expects a full squad for the opening tilt tomorrow night.

Coach Cliff Graybehl, who has also had his share of injury troubles, was feeling pretty good after Tuesday's scrimmage.

BACKS HOT

Charlie Camou, Bill Crawford, and Jim Murphy were looking like seasoned backfield men as they passed and ran through the best the coaches could throw against them.

John Spiller was filling the center spot good, and the line-men were hitting hard in the

(Continued on Page 7)

Needed Info For Week-End In Glendale

Going to the football game in Glendale tomorrow night?

You can go the way you like, of course, but here's how I'm going:

1. Up Western avenue to Los Feliz boulevard.
 2. East on Los Feliz to Glendale avenue.
 3. North on Glendale avenue to Broadway.
 4. East on Broadway to Verdugo road.
 5. Glendale High School, the scene of tomorrow's battle, is located on Broadway just east of Verdugo road.
- A word of warning: Don't go looking for a football game at the Glendale Hoover High School. They have no lights, so the game is being played at Glendale High.
- See you at the game—if I can find it.

Let's Go
EAST
the Friendly
way



Let's Go
GREYHOUND

There's something about a Greyhound that makes it the friendly way to travel East! Fellow passengers are more neighborly . . . your driver is careful, courteous . . . you enjoy friendly service all along the way. And those low Greyhound fares will really make you happy!

There Are No Lower Fares EAST!

Chicago	\$36.85
Detroit	42.80
Washington, D.C. . .	47.45
New York	49.80
Kansas City	29.70
Minneapolis	34.65
New Orleans	34.40
Atlanta	40.90

Return Trip 72c U.S.S. — see Round Trip Ticket!



22 Daily Trips EAST
from LOS ANGELES including
8 "Direct-Thru" Express Buses

DANIEL'S CAFE
1625 CABRILLO AVE.
TEL. TORRANCE 1668

Firestone Guaranteed BRAKE SERVICE

AFFORDS GREATER
SAFETY FOR YOU!

You will be completely satisfied with our brake service. The best of our brake service you can depend upon. Come in today!

FREE 11-POINT BRAKE INSPECTION

DON'T MISS THIS

**BRAKES
RELINED**
HYDRAULIC ONLY
or — Plymouth — Che
16" 95 Incl. Labor & Materials
Other Cars
Up to \$29.95

BUDGET TERMS EXTENDED

Firestone

STORES
Marcelina at Cravens

Call
Torrance 476 or 525
for Appointment

HARDY-WARE by TORRANCE hardware



TORRANCE HARDWARE

1515 CABRILLO • Phone 1480 • FREE PARKING

WESTERN AUTO SUPPLY CO.

The West's Oldest and Largest Retailers of Auto Supplies
PRICES EFFECTIVE THROUGH SATURDAY

FALL OIL SALE

"SUPREME" Compounded

40c PER QUART QUALITY Per GALLON

"SUPREME" Compounded is a premium type oil at a real money-saving price. It keeps your motor clean, rings free and reduces sludge, rust and acid wear. It's refined, distilled and compounded from 100% pure paraffin base oil.

66¢ Inc. Fed. Excise Tax
In Your Container

"SUPREME" Compounded in QUART CANS

"SUPREME" Compounded in QUART CANS. Always carry a few cans with you on long trips. Play safe. Be prepared in an emergency with "SUPREME" Compounded. (Fed. Excise Tax Inc.)

25¢ ea.

CHAMOIS Only 88¢	MATSHIELD \$1.98	I-HI MIRROR REG. \$1.59 \$1.19	FOGLIGHT REG. \$4.19 \$3.69	Brake Switch 38¢

15" x 20", made of sewn together pieces of quality skins. For front or rear of auto. 16 1/2" x 6 1/2". No wrinkling or buckling. Mounts on top of car door for better vision. 4" Mirror. 4 1/2" sealed beam unit. Fits cars with splash pan. Hydraulic. For Chev. 1936-42; Ply. 1928-36 and some other cars.

VARCON SUPER-ACTIVE BATTERIES

with "WATERGUARD" PROTECTION

This double insulation affords plate protection by preventing shedding and deterioration. 50% more water above plates gives 100% more protection. 100% Virgin wool. Three beautiful multi-colored plaid patterns with fringed ends. A very fine robe.

1 Case — Reg. \$17.75

\$15.45 Exch.

Fits most models of Chevrolet, Chrysler, Dodge, Frazer, Kaiser, Nash, Oldsmobile, Packard, Plymouth and other makes.

OTHER BATTERIES AS LOW AS \$7.55 Ex.

6mo. GUARANTEE

You can't buy a better battery. The "Super-Active" is power-packed with plenty of reserve power.

WESTERN AUTO SUPPLY CO.

ALWAYS BETTER BUYS AT 1269 SARTORI
TORRANCE — Phone 265

MANY USED
FURNITURE
VALUES

Used Electric Refrigerators
From \$35.00—All in
Good Running
Condition.

GET 4 SAVE MORE

CREST MULTI GRIP
Guaranteed 25,000 Miles
or 25 Months
600x16

4 FOR \$49.95

SAVE \$21.88 — 2 For \$26.98
TERMS — NO CASH DOWN PAYMENT
WITH YOUR OLD TIRES
Plus Excise Tax
Ask for Sale Prices on Other Sizes

USED
WASHERS

USED
STOVES

AUTOMATIC
ELECTRIC TOASTER

Reg. \$13.49
\$11.89

2-slice automatic. Gleaming chrome-plated shell trimmed with maroon bakelite. (42-9519)

ELECTRIC
COFFEE MAKER

SALE
\$2.88

Handsome aluminum percolator makes delicious coffee every time. (42-2840)