

## APPEAL MADE FOR MORE POCKET-SIZE NOVELS

Got an old pocket novel you're not using? A GI in Korea would like to have it, especially if it's a western or detective story.

Red Cross here received a request from the military for "all the pocket-sized material you can get," pointing out that cargo limitations made it impossible to ship standard-sized books and magazines.

Although most GIs prefer westerns and detective novels, the communique said, any kind of subject matter is acceptable. Mrs. Don Hyde, chairman of Torrance chapter of the Red Cross volunteer services, asked that the hantam books be taken to the Red Cross office, 1754 Torrance boulevard. She said that large loads will be picked up by calling the mercy organization at Torrance 1754.

The chairman suggested that clubs and church groups "might initiate book-gathering campaigns."

## Kettler Kapers

By MRS. VIRGINIA JONES  
Lomita 1256-J

Yep, the Joneses are finally going to "take off" for a vacation, and, while I'm gone, the column will not be forgotten! No, sir... my neighbor, Mrs. Millie West is going to keep the ball rolling. Please, everyone, lend her a hand and tell her all your news. Her phone number is Lomita 3003-J, or if you are driving by, stop in at 2034 Reynosa drive and she will gladly accept your news. I'm sure there are lots of folks still vacationing and out-of-state visitors here, and loads of parties... phone Millie!

Well, we've heard that the James Withycombes, former Kettler Knolls residents are here, lonesome for us down here, (yes, we miss them, too.) The Joe Helphand family visited them recently in Berkeley where they are now residing and really toured San Francisco, having loads of fun! Here's just a few places they visited, the Top O' the Mark, Chinatown, Fisherman's Wharf, the Zoo, Golden Gate Park and many other scenic spots.

Those bathrobe-clad, pin-curl women you saw one morning last week were those hastily tramping to a come-as-you-are breakfast at Bette Morehead's Middlebrook home, Circle 7 upon this gay party and they found that some gals do get up early, too. Bette's homemade coffee cake was lush, they said.

Colorado Springs, Colo., was rendezvous for Mr. and Mrs. Paul Anderson and daughter Carol of 1887 Reynosa drive and the Rev. and Mrs. R. A. Anderson of Kingfisher, Oklahoma recently when they met for a two-week vacation trip together. The Paul Andersons are now at home and have as their guest for two weeks, Paul's sister, Miss Roberta Anderson of Kingfisher, Oklahoma.

The misses LaVeta and Kay Trezise of Golden, Colorado, who have been visiting relatives in

California were guests last Sunday of Zeke and Lou Trezise of Marinette street and Cliff and Faye Trezise, when they toured Tijuana, Mexico and picnicked at Balboa Park in San Diego.

After a very pleasant two months stay, Mr. and Mrs. C. J. Farrington, parents of Mrs. James Hester, have now returned to their home in Mitchell, Nebraska. They were guests at the Hester residence at 1937 Middlebrook road and enjoyed visiting with other relatives in San Diego and Los Angeles.

With a great sigh of relief, the Falena street neighborhood was happy to see Little Leslie Stanton returning to his home at 23105 Falena last week following an attack of appendicitis. And, he's still got his appendix! We're just all hoping—no more attacks for you Leslie!

Talking about appendicitis—little Tommy Andreoli is now at home, recovering nicely. His big brother Frank is home for two weeks leave from San Diego Navy Boot training camp with orders to report on the USS Iowa in San Francisco next week. His rating is Fireman Apprentice—good work, Frank!

Relaxing at luxurious Carlsbad Hotel-by-the-Sea last week were Millie and Walt West of Reynosa drive. Walt is based at nearby Naval Hospital near Oceanside as X-ray technician so they enjoyed, both the hotel environments and nearby spots.

Don't forget to phone Mrs. West—Lomita 3003-J. See you folks, later!

WE NEVER DO CLOSE  
"Eat With Charley"  
DANIELS CAFE  
1625 Cabrillo — Torrance

How to make good telephone service even better...



Long Distance service is faster when you call by number

You'll find your Long Distance Operator can put your out-of-town number you want... rather than just the name and address. That way, you see, you won't have to wait for her to get the number from "Information" in the town you're calling. So why not start a Long Distance list... by jotting down the number when the operator reports it to you.

look 'em up—jot 'em down—then call

You know, it's awfully easy to get telephone numbers "turned around" in your head. So to get the right number, it's a good idea to look it up in the telephone book... jot it down on a slip of paper... then make your call.



Pacific Telephone

## Laud Residents In Appeal for Flood Relief

A vote of appreciation on behalf of the American Red Cross chapter, to Torrance residents for the manner in which they responded to an appeal for money to assist victims of the recent Kansas flood.

"We have collected close to \$500, and for a city of its size it is a commendable response," said the chapter head.

Still more money is to be added to the fund since not all of the canisters placed through-

out Torrance have been returned to Red Cross headquarters at 1754 Torrance boulevard, according to Mrs. Hyde. "We will be glad to accept any donation and forward it through the Los Angeles chapter if there is any person who wishes to contribute to the relief fund," she said.

### How about a pleasing punch? Made with CANNED JUICES!

It's as simple as this: Combine a No. 2 can pineapple juice with a No. 2 can orange juice. Pour over ice in tall glasses to about 2/3 full; fill glasses to top with ginger ale; garnish with orange slices, and—presto! Healthful refreshment! Try your own variations with other juices.

**GRAPEFRUIT JUICE** 2 18-oz. cans 19¢  
Town House brand. Sweetened or natural. Excellent flavor. (48-oz. can, 21¢)

**APPLE CIDER** Martinelli Pure quart bottle 27¢  
Pressed from top quality apples.

**ORANGE JUICE** Bel-air Frozen 6-oz. can 19¢  
Concentrated. Just add 3 parts water.

**LEMONADE** Bel-air Frozen 6-oz. can 11¢  
Concentrated. Just add 4 cans water.

## COOLER INSIDE

### ICED COFFEE... a summer treat!

For the best in iced coffee be sure it is fresh! At Safeway coffee is guaranteed fresh! And the prices are low!

**Airway Coffee** Mild & Mellow 1-lb. bag 72¢  
(3-lb. bag, 2.10)

**Nob Hill Coffee** Finest Quality 1-lb. bag 74¢  
(2-lb. bag, 1.47)

**Pennant Coffee** Good Quality 1-lb. bag 69¢  
at a Low Price

**Peanut Butter** Beverly Brand 12-oz. jar 33¢  
Chunk or regular. (Regular, 24-oz., 57¢)

**Margarine** Sunnybank Yellow lb. 31¢

**Bread** Mrs. Wright's Cracked Wheat small loaf 17¢

**Bread** Butter & Egg small loaf 17¢

**Raisin Bread** Skylark small loaf 23¢

**Donald Duck Flour** White or Wheat Bread large loaf 23¢

**Flour** Kitchen Craft Enriched White 10-lb. bag 99¢  
(2-lb., 23¢; 5-lb., 51¢; 25-lb., 2.25)

**Grape-Nuts Flakes** 12-oz. pkg. 22¢  
(Grape Nuts, 10 1/2-oz. pkg., 20¢)

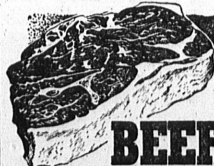
**FROZEN PEAS** Bel-air 12-oz. pkg. 19¢

**STRAWBERRIES** Bel-air 12-oz. pkg. 30¢

**KERN JELLIES** Current, Grape or Crabapple 12-oz. jar 19¢  
(Black Raspberry or Blackberry, 25¢)

**Green Beans** Del Monte 16-oz. can 23¢

**Mayday Salad Oil** Whole pint bottle 35¢  
(Quart bottle, 68¢; gallon can, 2.49)



### CHECK THESE MEAT VALUES

At Safeway you can be sure of real value... high quality meats at exceptionally low prices.

**BEEF ROAST** Shoulder, Blade Cut lb. 69¢

From U. S. CHOICE beef. (Arm cuts, lb. 73¢)

**GROUND BEEF** Packed in Visking lb. 65¢

Excellent for summer meals. Freshly made, flavorful.

**BOILING BEEF** Plate Meat U. S. CHOICE lb. 25¢

**BEEF LIVER** SLICED. Excellent With Bacon lb. 75¢

**RABBITS** Frying Size, Fresh. Local, Fine Eating lb. 59¢

### SPARERIBS

Select Eastern Pork. Medium size. 3 to 5-lb. average. lb. 39¢

### CHICKEN PARTS

Swanson brand. Select your favorite at Safeway today.

**Chicken Breasts** White Meat lb. 1.19

**Chicken Legs** Fine Flavor lb. 1.09

**Chicken Thighs** Dark Meat lb. 1.09

### MIDGET TURKEYS

Beltsville type. Gov't Grade A, Eviscerated. Small size, 4 to 8-lb. lb. 73¢

## ORANGES GRAPES CELERY CARROTS TOMATOES APPLES

Northern Gravensteins. For pies or for sauce. lb. 6¢

Medium Size Valencia Excellent for Juice lb. 4¢

**Thompson Seedless** Add Zest to Summer Salads 2 lbs. 17¢

**Utah Type. Crisp. Fresh.** For Tasty Salads lb. 5¢

**Crisp. Freshly Pulled.** Tops Have Been Removed lb. 7¢

**Locally Grown. Firm.** Ripe, Meaty. To Slice. 2 lbs. 25¢

### Make your own ICE CREAM SODAS at home

this easy way: Place large serving of ice cream in tall glass; pour over it chilled ginger ale, root beer, cola, or other carbonated beverage. For variations, try adding crushed pineapple, or mashed bananas, or chocolate syrup. Serve with straws and an iced tea spoon.

### SOFT DRINKS

Cragmont brand. Choice of Root Beer, Merry Mix Soda, Ginger Ale, Strawberry Soda, Orange Soda, Cream Soda.

2 32-oz. bottles 29¢

### VIVA COLA

A refreshing beverage. 2 32-oz. bottles 29¢  
Deposits extra on bottles.

### ICE CREAM

Partly Pride Catering

Vanilla, Chocolate, Strawberry or Peppermint Stick.

(Two pint cartons, 45¢) 23¢

### SNOW STAR

Vanilla or Chocolate. (Two pint cartons, 33¢) 17¢

Beat the heat with these  
**Frosty fresher-uppers**  
from **SAFeway**



### FLA-VOR-AID

A delicious beverage concentrate. Just add water and sugar. Assorted flavors.

2 pkgs. 9¢

**Make FROZEN SUCKERS**  
Use fruit juices, frozen dessert powders, soft drink powders, or carbonated beverages. Pour liquid into ice trays which have dividers in place. When partially frozen, insert small wooden paddles, or toothpicks.

### BARGAINS AT YOUR SAFEWAY

**COFFEE** Edwards Vacuum Packed Drip or Regular. (2-lb. can, 1.57) New Half-pound Size, 41c 1-lb. can 79¢

**MARGARINE** Dalewood Yellow Quarters. Cartoned lb. 21¢

**CHUNK TUNA** Star Kist Brand Fine for Salads 6 1/2-oz. can 25¢

**LUNCH MEAT** Rath Black Hawk For Summer Meals 12-oz. can 45¢

**TISSUE** Waldorf Brand 2 rolls 13¢ Scott Tissue 2 rolls 19¢

### EGGS

LARGE, GRADE A

**Breakfast Gems** dozen 67¢

**Oak Glen** dozen 65¢

**Jell-well** Gelatins, Puddings or Pie Filling pkg. 7¢

**M. D. Tissue** Toilet Paper 2 rolls 23¢

**Scotties** Facial Tissues 2 packages of 200 23¢  
Soft, absorbent. (400-count pkg. 23¢)

### GOLDEN CORN

Peter Pan Brand. 8 1/2-oz. can 9¢

Whole Kernel.

### TO WIN NEW FRIENDS

**10¢ SALE**

**WHITE MAGIC SOAP**

buy GIANT pkg. 57¢

get LARGE pkg. 10¢

Both for 67¢

### CLOROX LIQUID BLEACH

Half-gallon, 27¢.

Gallon jug, 45¢. quart bottle 16¢

### PUSS 'N BOOTS CAT FOOD

2 8-oz. cans 15¢ 15-oz. can 12¢

PRICES EFFECTIVE THROUGH SAT., AUG. 18, 1951, (thru Sunday, Aug. 19, 1951 in stores open Sunday) AT SAFEWAY STORES IN LOS ANGELES COUNTY.

Right to limit reserved. No sales to dealers. Sales tax added to retail prices on taxable items.

## SAFeway

1301 SARTORI AVE., TORRANCE  
Open Thurs., Fri., Sat. Nights Until 9 p.m.

2171 PACIFIC COAST HWY., LOMITA  
Open Friday and Saturday Nights until 9 p.m.