



GEORGE AND FLORENCE PALTRIDGE  
... In Race to Open New Cafe on El Prado

#### Guy W. DeWitt Assigned To Submarine Bluegill

Guy W. DeWitt, torpedoman's mate, second class, USN, husband of Mrs. Katherine DeWitt of 1923 Andrea, avenue, is assigned to duty aboard the submarine USS Bluegill with the Pacific Fleet. DeWitt is a graduate of Torrance High School, and he entered the Navy in December, 1942.

**Give Yourself...**

**Authentic Color Suggestions**

BORROW OUR FAMOUS SHERWIN-WILLIAMS  
**Style Guide**

SEE YOUR HOME AS YOU'D LIKE TO HAVE IT!

ONLY SHERWIN-WILLIAMS PAINTS GIVE THAT  
"Style Guide Look"

Inside... on ceilings, walls and woodwork!

SHERWIN-WILLIAMS  
**ONE COAT FLAT TONE**  
WASHABLE FLAT WALL PAINT

No thinning or undercoater needed. Easy to clean... it's stain resistant and washable. Dries rapidly and covers almost any wall surface in one coat! Apply with brush or Roller-Koater.

5 GALLON \$4.45

SHERWIN-WILLIAMS  
**ENAMELOID**

Interior, exterior, all purpose for porch and recreation room furniture. Ideal for bathrooms and kitchen walls and woodwork. Resists heat and stains; easy to wash. Comes in 14 glowing... easy to wash, colors.

QUART \$2.25

SWP HOUSE PAINT  
IS WEATHERED

For your protection against excessive loss of gloss, color fading, high dirt collection, rapid erosion, uncontrolled chalking, checking, cracking, mildew and fungus.

Per Gal. in P's \$5.00

Style Guide specified products...

HOME DECORATION SERVICE  
**SHERWIN-WILLIAMS**  
1623 CARRILLO AVE. Torrance  
Phone 2195 or 2196  
OR YOUR NEARBY SHERWIN-WILLIAMS DEALER



NEW AND MODERN... Due to come down today or tomorrow are the window signs hiding the busy activity going on within "George's Meat 'N' Place." Located at 1340 El Prado, the all new and modern equipped cafe, doughnut, and malt shop is to open to the public this week end.—(Herald Photo).

### Craftsmen In Mad Rush To Open George's New Meat 'N' Place

At the moment a mad race is on between carpenters, electricians, and plumbers to get fast minute work done so that George can open his new "Meat 'N' Place" this week end.

The new El Prado eating place will, he says, however, this week end claim George and Florence Paltridge, owners of the new 32-stool doughnut and dining spot.

Closed the early part of this week was the popular couple's former malt and doughnut shop—"Beverly Anne's" which is located across the street from the new location. The all new and modern restaurant is located at 1340 El Prado.

"We are expanding our menu to include complete breakfast and luncheon and dinner suggestions," said Paltridge. The cafe owners are also expanding the doughnut making facilities in the new location. Featured will be "Rich-in-Egg" cake doughnut mix and "Tender-fluff Potato Raised Doughnut Mix" for raised "sinkers." A larger variety of doughnuts will also be offered.

Planned to be open within two to three weeks is the Health Food Store to be operated by the Paltridges. The health store will be located next door to the new 60 by 25 foot restaurant.

Paltridge, a former pharmacist

### Lodge Members to Meet

Representatives of lodges of the Southern district will meet for a meeting and fish dinner at the Torrance Lodge Loyal Order of Moose tomorrow (Friday) night at 6:30; George Powell, governor, announced.

special occasion cakes such as wedding and birthday cakes will be ordered special.

New kitchen equipment includes a boiling water dishwasher and sterilizer which eliminates towel.

**HARDY-WARE** by **TORRANCE hardware**

I'M AFRAID YOU'VE PUT TOO MUCH POSTAGE ON THIS LETTER, SONNY.

GOSH!

I HOPE THAT WON'T MAKE IT GO TOO FAR.

**TORRANCE HARDWARE**  
LONG WAYS TO GIVE YOU THE FINEST.

**TORRANCE HARDWARE**  
WE GIVE S.C.H. GREEN STAMPS!  
Chas. V. Jones, Owner  
1515 CARRILLO • Phone 1480 • FREE PARKING

#### TORRANCE'S FINEST—FRIENDLIEST MARKET

## GREATER TORRANCE MARKET

Limit Rights Reserved—Tax Will Be Added to Taxable Items

CORNER OF ARLINGTON and TORRANCE BLVDs. — TORRANCE

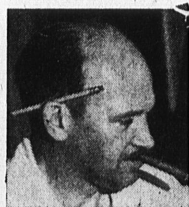
OPEN EVERY DAY

FRIDAYS UNTIL 9 P.M.

Plenty of FREE PARKING

PAYROLL CHECKS CASHED

Prices Good Thurs., Fri., Sat., July 19, 20, 21



#### HANK SAYS:

When you shop here you can shop with leisure. Lots of free parking is available at all times!

Our EVERYDAY PRICES Are Always LOWER

#### MEATS · FISH · POULTRY

FANCY—N. Y. Dressed

Stewing Chickens 41<sup>c</sup> lb.

LEAN MEATY—Small

SPARE RIBS 47<sup>c</sup> lb.

LEAN

BOILING BEEF 29<sup>c</sup> lb.

ARMOUR'S STAR—Link

PORK SAUSAGE 54<sup>c</sup> lb.

KINGAN'S EASTERN

SLICED BACON 39<sup>c</sup> lb.

ARMOUR'S STAR, Smoked

LIVER SAUSAGE 49<sup>c</sup> lb.

VARIETY COLD MEAT LOAF

OLIVE... PIMIENTO 59<sup>c</sup> lb.

PEPPER & MACARONI & CHEESE

SLICED AMERICAN Cheese 49<sup>c</sup> lb.

ARMOUR'S STAR PURE Lard 19<sup>c</sup> lb.

#### FRUITS & VEGETABLES

LARGE—SOLID

TOMATOES

2 Lbs. for 15<sup>c</sup>

FORMOSA

PLUMS 5<sup>c</sup> lb.

LARGE, SOLID

HEAD 5<sup>c</sup> ea.

LETTUCE

EXTRA FANCY

TENDER

LARGE STALK

CELERY 3<sup>c</sup> lb.

LARGE GRADE 'B' Every Egg Guaranteed

**EGGS** 55<sup>c</sup> doz.

PUROLA 3-lb. Tin

**SHORTENING** 75<sup>c</sup>

SASSY—Tall Cans

**DOG FOOD** 3 For 25<sup>c</sup>

CLAPP'S—Strained

**BABY FOOD** 3 For 23<sup>c</sup>

LAURA SCUDDER Large 23-oz. Jar

**BUTTER** 49<sup>c</sup>

UGENE—No. 2 Can

**SHOESTRING BEETS** 10<sup>c</sup>

GLOBE A-1 10-lb. Bag

**FLOUR** 89<sup>c</sup>

CHASE & SANBORN GET ACQUAINTED SALE

YOUR CHOICE All Grinds—1-lb. Tin

CHASE & SANBORN **COFFEE** 79<sup>c</sup>

KRAFT'S 2-lb. Box

**VELVEETA** 79<sup>c</sup>

OUR BEST Lge. 24-oz. Jar

**PICKLES** 33<sup>c</sup>

CONTIDINA—Jumbo 46-oz. Can

**Tomato Juice** 19<sup>c</sup>

NEW COOKIE SENSATION Chocolate & Crunchy Coconut

**KOKO JO'S** 25<sup>c</sup> PKG.

BEN HUR Full Quart—FIESTA

**MUSTARD** 17<sup>c</sup>

SUNNY SMILE 303 Can

**SWEET PEAS** 10<sup>c</sup>

GIANT SIZE NEW—NO RINSE

**SURF** 55<sup>c</sup>

16 Bags 48 Bags

**TEA** 17<sup>c</sup> 45<sup>c</sup>

NEW COOKIE SENSATION Chocolate & Crunchy Coconut

**KOKO JO'S** 25<sup>c</sup> PKG.

BEN HUR Full Quart—FIESTA

**MUSTARD** 17<sup>c</sup>

SUNNY SMILE 303 Can

**SWEET PEAS** 10<sup>c</sup>

BEN HUR Full Quart—FIESTA

**MUSTARD** 17<sup>c</sup>

SUNNY SMILE 303 Can

**SWEET PEAS** 10<sup>c</sup>

BEN HUR Full Quart—FIESTA

**MUSTARD** 17<sup>c</sup>

SUNNY SMILE 303 Can

**SWEET PEAS** 10<sup>c</sup>