

Group Meeting Place Suggested To Realty Board

Erection of a "Realty Board Building" in a central location which could be used for clubs and civic organizations as a meeting place has been suggested as a project to be undertaken by the Torrance-Lomita Realty Board.

In a letter to C. J. "Paddy" Ryan, president of the joint realty board, Gerald L. Alter, head of the Alter Realty and Insurance Company suggests the board consider the project not as a profit enterprise, but as a civic undertaking.

"This idea should be considered as a service to the community and the Torrance-Lomita Realty Board, if such a project is successfully achieved, would attain an enviable reputation and prestige by helping to develop local community organizations," wrote Alter.

The benefits to the board in sponsoring such a project would be unlimited value of advertising and good will that naturally would be derived. A Realty Board Building would be an asset to the community, Alter claims.

Thousand Expected For Annual Picnic

More than 1000 persons from various points in Southern California are expected to attend the New York and New Jersey joint annual picnic to be held at Bixby Park, Long Beach all day Sunday, July 8.

A two hour variety program will begin at 1 p.m.

OFFICIAL NAME

The official name of Albania is Shqipëria.

Representing PRUDENTIAL and HARTFORD



Lund CO. AGENTS

Bank of America NATIONAL TRUST AND SAVINGS ASSOCIATION

Condensed Statement of Condition June 30, 1951

RESOURCES

Cash in Vault and in Banks	\$1,158,447,521.56
United States Government Obligations	1,455,084,312.96
State, County, and Municipal Bonds	430,643,137.48
Other Bonds and Securities	297,696,375.21
Loans and Discounts	3,399,059,010.22
Bank Premises, Fixtures, etc.	51,324,528.59
Customers' Liability on Letters of Credit, etc.	192,693,724.12
Accrued Interest and Other Resources	36,595,787.53
TOTAL RESOURCES	\$7,021,544,397.67

LIABILITIES

Capital	\$150,000,000.00
Surplus	166,000,000.00
Undivided Profits and Reserves	97,100,966.78
TOTAL CAPITAL FUNDS	\$413,100,966.78
Reserve for Possible Loan Losses	40,527,353.65
Deposits	\$3,399,422,772.68
Deposits Savings and Time	2,916,908,937.41
Liability for Letters of Credit, etc.	199,390,062.72
Reserve for Interest, Taxes, etc.	52,194,284.43
TOTAL LIABILITIES	\$7,021,544,397.67

Main Offices in the two Reserve Cities of California
SAN FRANCISCO • LOS ANGELES
Branches throughout California
Overseas branches: London, Manila, Tokyo, Yokohama, Kobe, Bangkok, Guam

BANK OF AMERICA (International)
Home Office at Wall Street, New York, N.Y.
(A wholly-owned subsidiary)

CALIFORNIA'S STATEWIDE BANK

Member Federal Deposit Insurance Corporation
Member Federal Reserve System

Moose Lodge Represented At Caucus

The Torrance lodge of the Loyal Order of Moose was represented at the South Central District caucus of the California Moose Association, held at Inglewood Monday, by Brothers Abe Robinson, James Johnston, Charles Shiffer and Governor George Powell.

Delegates to the Inglewood meeting will also attend a statewide caucus at the Santa Barbara Moose lodge on Sunday, July 8th.

Representatives of seven Moose lodges of sub-district Area No. 3 will hold its monthly meeting at the Torrance Carson street lodge of the Moose on Friday, July 30th, at 8 p.m.

State officers of the Moose will report on activities of the past year, and reveal their agenda for the coming year.

A dinner of fish and chips will be served following the meeting. Brother J. A. Evans was the winner of a recent attendance prize offered by the Torrance lodge of the Loyal Order of Moose.

WEB LOCATION

Spider webs usually are built on the south side of trees.

New Donald Duck Bread Makes Its Debut Locally

Shoppers in this area will be greeted with a familiar friend when they visit the bread shelves in their favorite markets and grocery stores next week.

According to an announcement made earlier this week by Pietro Di Carlo, president of Di Carlo's National Bakery, Inc., as he announced the introduction of "Di Carlo's Donald Duck Bread."

"We are utilizing all of the experience of our past forty-five years in the baking business," Di Carlo stated, "along with the new double rich Donald Duck formula to give our many friends the best tasting, most healthful loaf of bread possible."

Donald Duck bread will be wrapped in a gay blue and white wrapper with large pictures of the famous Walt Disney cartoon character appearing in many places.

PLYWOOD USE

Plywood is used extensively in the production of moving picture sets.

COLOR BLIND

Only rarely is it found that women are color blind.



DONALD DUCK WELCOMED BY BAKERY LEADERS . . . Walt Disney's familiar creation, Donald Duck, is being welcomed to this city by the executives of Di Carlo's National Bakery, Inc., bakers of new, enriched Donald Duck bread. Pietro Di Carlo, (center), president of the baking company which has carried his name since 1906, is shown pointing while Lawrence Di Carlo, (left) and Anthony Di Rocco look on.

SAVE NOW! INSULATE WITH

INSULITE

Full Line of Plaster Material, Cement, Permalite Aggregate, Clay Products, Sewer Pipes, etc.

TORRANCE MATERIALS CO.

1826 W. 213th St. Phone Tor. 4884 - 1885

RAIL MILEAGE

New Zealand has 3400 miles of railway.

BIRD VARIETY

There are 17 varieties of doves and pigeons in the U. S.

SPECIAL! FRIDAY and SATURDAY ONLY

PIES 39¢

FRESH CHERRY BERRY APPLE

PAUL'S BAKERY

Phone Torrance 1872
1651 Cravens—Next Door to Stadium Theatre

HARDY-WARE by TORRANCE hardware

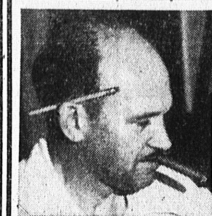


TORRANCE HARDWARE

1515 CABRILLO • Phone 1480 • FREE PARKING

CORNER OF ARLINGTON and TORRANCE BLVDS. -- TORRANCE

OPEN EVERY DAY—FRIDAYS 'til 9 p.m.—Prices Good Thurs., Fri., Saturday, JULY 5, 6, 7



HANK SAYS:

Every day is sale day here at Greater Torrance Market — Come in anytime and find out for yourselves That . . .

Our EVERYDAY PRICES Are Always LOWER

REDEEM YOUR KRAFT COUPONS HERE . . .

WITH COUPON—Pint
MAYONNAISE 29¢
WITH COUPON—Pint
SALAD OIL 19¢

LARGE FRESH GRADE "B" EGGS 55¢ doz.	BLUHILL Colored & Quartered OLEO 23¢ lb	GIANT SIZE GRANULATED SCOTCH SOAP 45¢	Chase & Sanborn 1-lb. TIN COFFEE 77¢
-------------------------------------	---	---------------------------------------	--------------------------------------

TOMATO JUICE 21¢

CONTIDINA—Jumbo 46-oz. Can

DIXIE—20-oz. Jar STRAWBERRY JAM 49¢	PUROLA 3-lb. TIN SHORTENING 75¢	UGENE—No. 2 Can DICED BEETS 10¢	WRISLEY 8 Bar Ass'd. TOILET SOAP In Plastic Re-Use Bag 53¢
-------------------------------------	---------------------------------	---------------------------------	--

Clapp's or Libby's Strained BABY FOODS 3 FOR 23¢	Snack Size Cello Bags Marshmallows 3 FOR 23¢
--	--

HORMEL'S 12-oz. Can SPAM 45¢	C&S—46-oz. Can ORANGE JUICE 22¢	VENUS Large Bag COOKIES 25¢	1c SALE BABO CLEANSER 3 FOR 23¢
------------------------------	---------------------------------	-----------------------------	---------------------------------

FORMOSA—SWEET JUICY PLUMS 2 Lbs. For 15¢	CRISP, TENDER CELERY 5¢ lb	COACHELLA VALLEY GRAPEFRUIT 1¢ ea.	KENTUCKY WONDER POLE BEANS 2 Lbs. For 15¢
--	----------------------------	------------------------------------	---

TORRANCE'S FINEST—FRIENDLIEST MARKET

GREATER TORRANCE MARKET

Limit Rights Reserved—Tax Will Be Added to Taxable Items

Top Grade - Lowest Prices Here are just a few of our many WEEK-END SPECIALS

KINGAN'S EASTERN TENDERIZED PICNIC HAMS 49¢ lb	N. Y. DRESSED FRYING or ROASTING CHICKENS 47¢ lb	ARMOUR'S STAR LINK PORK SAUSAGE 59¢ lb	Choice Cut—Baby Beef POT ROAST 67¢ lb
LEAN BOILING BEEF 34¢ lb	KINGAN'S EASTERN Sliced BACON 39¢ lb	FOR YOUR FROZEN FOOD LOCKERS! U.S. GRADED "AA" and "A" BEEF Whole or Half 57¢ lb	
Cut and Wrapped FREE!			