


**Representing**  
**PRUDENTIAL**  
and  
**HARTFORD**



**Lund CO.**  
AGENTS.

**BECOMES REPUBLIC**  
Liberia became a republic in 1847, its constitution modeled after that of the U. S.

**LOMITA Theatre**  
NOW PLAYING ENDS MON.  
Van Heflin Yvonne DeCarlo  
**TOMAHAWK**  
In Technicolor  
ALSO  
Irene Dunne Fred MacMurray  
**NEVER A DULL MOMENT**  
Tues. thru Sat. May 8-9-10-11-12  
Burt Lancaster Joanne Dru  
Sally Forrest  
**VENGEANCE VALLEY**  
In Technicolor  
ALSO  
Ronald Reagan Diana Lynn  
**BEDTIME FOR BONZO**

**HARBOR Drive-in Theatre**  
VERMONT at SEPULVEDA  
23444 So. Vermont Ave. TE. 4-8501  
SHOW STARTS AT SUNDOWN

**ONE GIRL ALONE...with Six Men**  
in a Wilderness!  
**Primitive PASSION**  
starring  
Lenore Alan Jack  
**AUBERT BAXTER MITCHUM**

—ALSO—  
SEE...sensuous sirens...  
made for love but also ready  
for war against man or beast.

**QUEEN OF THE AMAZONS**  
This Big  
Show  
Ends  
SAT!

**...Perjury**  
(Continued from Page 1)  
teaching assistant.  
Vetterli, who lives at 17107  
Crenshaw boulevard, has been  
an instructor of journalism at  
El Cardino since September of  
1949. He graduated from UCLA  
in 1940 and was later employed  
at North American Aviation  
Company while he continued his  
studies at USC. He was em-  
ployed as a teaching assistant  
at USC in 1945 and 1946. Later  
he taught English in high  
schools at Delano and Anaheim.

**RIVER BASIN**  
The area drained by the Mis-  
sissippi river system comprises  
the greatest fertile plain on the  
earth.

**Torrance Herald**  
Established Jan. 1, 1914

**Paint Store**  
**Offers Style**  
**Guide Book**

Sherwin-Williams new edition  
of the Paint and Style Guide  
book is still available for home  
decorators. W. N. Harold, man-  
ager of the local paint store re-  
minded Torrance residents this  
week.

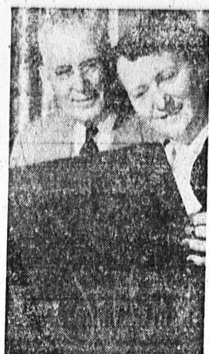
Recently off the press is the  
1951 edition which shows the  
latest in color styling which can  
be used by local residents con-  
templating re-doing their homes.  
The book may be viewed or  
borrowed from the local paint  
store at 1623 Cabrillo avenue.  
Harold said.

Hundreds of spectacular full-  
color photos of actual homes,  
interiors and exteriors, parade  
through the book's 100 pages.  
The giant page size (18 x 16  
inches) lends the impression of  
third dimension. Edited by the  
Sherwin-Williams Decorative Stu-  
dios, the book introduces home-  
makers to amazing advance-  
ments in the realm of home  
decoration.

"Designed as a practical refer-  
ence book, it not only shows  
the beauty and charm of exist-  
ing homes but gives expert in-  
formation on how to achieve  
the color harmony featured on  
its pages."

The Style Guide presents a  
variety of new color combina-  
tions. Intriguing, up-to-date col-  
ors range from dramatic deep  
tones to delicate pastels.

**NATIONAL EDITORIAL ASSOCIATION**  
Active Member



**...Raps Army**  
(Continued from Page 1)  
many military duties which they  
could perform in the states near  
their families.

**Paint Store**  
**Offers Style**  
**Guide Book**

Sherwin-Williams new edition  
of the Paint and Style Guide  
book is still available for home  
decorators. W. N. Harold, man-  
ager of the local paint store re-  
minded Torrance residents this  
week.

Recently off the press is the  
1951 edition which shows the  
latest in color styling which can  
be used by local residents con-  
templating re-doing their homes.  
The book may be viewed or  
borrowed from the local paint  
store at 1623 Cabrillo avenue.  
Harold said.

Hundreds of spectacular full-  
color photos of actual homes,  
interiors and exteriors, parade  
through the book's 100 pages.  
The giant page size (18 x 16  
inches) lends the impression of  
third dimension. Edited by the  
Sherwin-Williams Decorative Stu-  
dios, the book introduces home-  
makers to amazing advance-  
ments in the realm of home  
decoration.

"Designed as a practical refer-  
ence book, it not only shows  
the beauty and charm of exist-  
ing homes but gives expert in-  
formation on how to achieve  
the color harmony featured on  
its pages."

The Style Guide presents a  
variety of new color combina-  
tions. Intriguing, up-to-date col-  
ors range from dramatic deep  
tones to delicate pastels.

**...Raps Army**  
(Continued from Page 1)  
many military duties which they  
could perform in the states near  
their families.

4) If the army can cut the  
draft in half, if men over 25  
can be exempted, if married  
men can be exempted, if vet-  
erans can be exempted; why  
can't National Guardsmen be  
given the same consideration, es-  
pecially when the majority of  
them fall within all three of  
the above exemptions?

5) Wives and children are un-  
dergoing an unnecessary phys-  
ical, mental and financial har-  
ship.

6) Enlistment period of Na-  
tional Guardsmen is being dis-  
regarded. Some men's enlist-  
ment period expired as much  
as seven months ago.

7) There are a number of reg-  
ular army divisions in the states  
which could be used for occu-  
pation duty and receive further  
training overseas, but instead  
National Guard divisions whose  
primary duty, we are told, is  
home defense, are being sent  
overseas.

8) Men who have been found  
to have physical defects of the  
lower extremities by army phys-  
icians are being sent overseas.  
"I am enclosing some general  
and specific cases where we feel  
that a gross injustice and fraud  
has been committed upon our  
rights as citizens and the Amer-  
ican sense of fair play," the au-  
thor states.

**Paint Store**  
**Offers Style**  
**Guide Book**

Sherwin-Williams new edition  
of the Paint and Style Guide  
book is still available for home  
decorators. W. N. Harold, man-  
ager of the local paint store re-  
minded Torrance residents this  
week.

Recently off the press is the  
1951 edition which shows the  
latest in color styling which can  
be used by local residents con-  
templating re-doing their homes.  
The book may be viewed or  
borrowed from the local paint  
store at 1623 Cabrillo avenue.  
Harold said.

Hundreds of spectacular full-  
color photos of actual homes,  
interiors and exteriors, parade  
through the book's 100 pages.  
The giant page size (18 x 16  
inches) lends the impression of  
third dimension. Edited by the  
Sherwin-Williams Decorative Stu-  
dios, the book introduces home-  
makers to amazing advance-  
ments in the realm of home  
decoration.

"Designed as a practical refer-  
ence book, it not only shows  
the beauty and charm of exist-  
ing homes but gives expert in-  
formation on how to achieve  
the color harmony featured on  
its pages."

The Style Guide presents a  
variety of new color combina-  
tions. Intriguing, up-to-date col-  
ors range from dramatic deep  
tones to delicate pastels.

**Rites Tomorrow**  
**For Mrs. Larkins**

Funeral services for Mrs. Ber-  
tie Mae Larkins, 71, of 1012 Ar-  
lington avenue, will be held in  
the Stone and Myers chapel at  
2 p.m. tomorrow. She died here  
Tuesday evening.

A resident of Torrance for the  
past 12 years, Mrs. Larkins is  
survived by three daughters and  
two sons. Surviving daughters  
include Mrs. Evelyn Moore, of  
2617 Arlington avenue; Mrs.  
Leona Thielen, of Redondo  
Beach; and Mrs. Helen Hasson,  
of Long Beach. The two sons are  
Carl Larkins, of 23118 Doris  
Way; and Jack Larkins, of Re-  
dondo. One brother, Jack Poe,  
lives in Billings, Montana.

Interment in Rosevelt Mem-  
orial Park Cemetery will follow  
services conducted by H. G.  
Cassell of the Church of Christ.

**Community Sing Slated**

A Sunday afternoon Commu-  
nity Sing under the direction of  
Merwyn Dant has been sched-  
uled for this week at Point  
Perrin Park in San Pedro. The  
program will be held from 2  
until 4 p.m.

**Here's How To**  
**SAVE MONEY ON**  
**AUTO INSURANCE**

**YOU CAN QUALIFY**  
**FOR THESE RATES:**

- IF all Regular Drivers of  
your car are between 25  
and 65 years old.
- IF you have had no ac-  
cidents in the past 3  
years.
- IF you do not use your  
car in your business ex-  
cept to go to and from  
work.

**—PROTECT—**  
Your Driver's License

Public Liability  
(Bodily Injury) \$18.99  
Property Damage 15.75  
Total Premium \$34.75  
for 1 year \$32.75  
AS LONG AS 8 MONTHS  
TO PAY—NO MEMBER-  
SHIP TO BUY

**TORRANCE**  
**General**  
**INSURANCE**

1407 MARCELINA AVE Phone 1300

**BUDGET CUTS**  
**of QUALITY MEATS**

...are Gloriously Good!

Our tender, tasty savory "BUDGET CUTS" that are so de-  
liciously good for braising... pot-roasting... stewing...  
and many other delightful meat dishes come from the same  
high quality meat as do more costly steaks, chops and  
roasts. Only a thin knife cut separates "BUDGET CUTS"  
from costlier ones. Serve more "BUDGET CUTS" and you'll  
keep your family's plates filled with nourishing meat and  
good meat flavor at a much lower cost.

— PRICES GOOD THUR., FRI., SAT. —

MORRELL'S LAYER PACK SLICED BACON	39¢ lb.
CENTER CUT PORK LOIN CHOPS	69¢ lb.
EASTERN PORK LOIN ROAST	59¢ lb.
GRADE U. S. GOOD—7-BONE BEEF CHUCK ROAST	69¢ lb.
PURE—LEAN PORK SAUSAGE	49¢ lb.
BONELESS SWISS STEAK	85¢ lb.
FANCY—SOLID—CRISP CABBAGE	3¢ lb.
LARGE FUENTE—24 SIZE AVOCADOS	2 for 25¢
FANCY—IMPERIAL TOMATOES	19¢ lb.
FANCY PIPPIN APPLES	5 lb. 25¢
U. S. No. 1 WHITE ROSE NEW POTATOES	10 lb. 29¢
FANCY—SOUTH AMERICAN BANANAS	2 lb. 25¢
LARGE—54 SIZE GRAPEFRUIT	4 for 25¢
LONG—GREEN CUCUMBERS	2 for 15¢

**All Brands YOU BUY**  
**COFFEE IT AT**  
**OUR COST** **Strictly**  
**Wholesale**

MEDIUM GRADE "AA" RANCH EGGS	59¢ doz.
PARKAY—By Kraft COLORED & CUBED MARGARINE	29¢ lb.
1-LB. BOX SNOWFLAKE CRACKERS	25¢
5-LB. BAG—ALL BRANDS FLOUR	44¢
C and H PURE CANE SUGAR	5 lb. bag 44¢

**CARSON MART**  
1929 CARSON ST. TORRANCE  
WE CASH PAYROLL CHECKS—Limit Rights Reserved

**YOU SAVE! YOU SAVE! YOU SAVE!**

**FREE! GAY PRINTED TEA TOWEL FREE!**  
With Every Purchase of \$1.00 or More  
(OPENING DAY ONLY)

**ANNOUNCING THE OPENING**  
**SATURDAY, MAY 5th**  
OF  
**MASTER BUFF MFG. CO.**  
2431 COMPTON BLVD. - GARDENA  
-- FACTORY OUTLET --

**REMNANTS - YARDAGE**  
Drapery Fabrics - Dress Fabrics - House Fabrics

**YOU SAVE BECAUSE** We are a Factory Outlet...  
**BECAUSE** Selling Direct to You.

**YOU SAVE BECAUSE** We Have Low Rent...  
**BECAUSE** and Small Overhead.

<b>SHEETS (Type 180 - Slightly Damaged)</b>	<b>\$2.69</b>
Size 72 x 108 ..... Reg. \$3.59	ea.
Size 81 x 108 ..... Reg. \$3.79	\$2.89 ea.
Size 90 x 108 ..... Reg. \$4.19	\$2.99 ea.

- Marquisette - Remnant lengths ..... 19¢
- Eyelet Embroidered Edging - Extra wide ..... 29¢
- Printed Percales - New attractive patterns ..... 39¢

**DAN RIVER GINGHAMS 79¢ YD.**  
Plaids and Checks - Sanforized - Values to \$1.39 yd.

- Organdy - White only - Perm. Fin. .... 39¢
- Cretonne - Printed for Drapes ..... 59¢
- Dotted Swiss - Luscious colors! ..... 59¢

**PURE IRISH LINEN!! \$1.39 YD.**  
Excellent Color Selection...  
Crease resistant ..... \$2.98 value

**OPEN DAILY 9:00 A.M. - 5:00 P.M.**  
**YOU SAVE! YOU SAVE! YOU SAVE!**

**STADIUM**  
NOW PLAYING  
Robt. Walker - Joanne Dru  
"VENGEANCE VALLEY"  
Color by Technicolor  
—Plus—  
Mark Stevens  
Robert Douglas  
"TARGET UNKNOWN"

SUN. - MON. - TUES. -  
Doris Day - Gene Nelson  
"LULLABY OF BROADWAY"  
Color by Technicolor  
—Plus—  
Dennis Morgan - Steve Cochran  
Patricia Neal  
"RATON PASS"

**TORRANCE**  
NOW PLAYING  
Anne Baxter  
Thomas Mitchell  
"THE SULLIVANS"  
—Plus—  
Dana Andrews  
Richard Conte  
"SALERNO BEACHHEAD"

SUN. - MON. - TUES. -  
Rich. Quinlan - Anne Gwynne  
Noah Beery, Jr.  
"FIGHTING COMMANDO"  
—Plus—  
Loretta Young  
"FURY IN THE SKY"

**GRAND**  
JAPANESE PROGRAMS  
Every Tuesday  
SPANISH PROGRAMS  
Every Wed. & Sat.  
Phone Torrance 269

**GARDENA**  
NOW PLAYING  
"FLYING MISSILE"  
—Plus—  
"STAGE TO TUCSON"

SUN. - MON. - TUES. -  
"LULLABY OF BROADWAY"  
—Plus—  
"A YANK IN KOREA"

**PARK**  
—FRI. - SAT. - SUN. -  
"THE DESPERADOES"  
—Plus—  
"HOLD THAT GHOST"  
Adults 25c Kids 9c

**Change of Time...**

**Now! Improved Schedules ON UNION PACIFIC TRAINS**

New Daylight Saving Time Schedules provide convenient de-  
partures... Faster Service... Early Arrivals in EAST!

**Streamliner**  
"CITY OF LOS ANGELES" 5:00 PM Daily  
Leaves Los Angeles (Daylight Saving Time)

No faster train East—Early arrival in Chicago, with convenient con-  
nections to eastern cities. Reserved-seat Coaches have comfortable leg-  
rests; choice of Pullman accommodations.

**Streamliner**  
"CITY OF ST. LOUIS" 11:30 AM Daily  
The only Streamliner between Los Angeles and St. Louis! Better-than-  
ever Coach and Pullman service through to Denver, Kansas City and  
St. Louis. New departure time and faster schedule with one-hour earlier  
arrival at St. Louis—11:59 a.m.—making all important train connections  
from that city. NO EXTRA FARE!

**LOS ANGELES LIMITED** 1:01 PM Daily  
The only train from Los Angeles that provides Coast-to-Coast service  
(no change of cars en route) at NO EXTRA FARE! Through Pullmans to  
Omaha, Chicago, St. Paul-Minneapolis, New York. Reserved-seat  
Coaches.

**PONY EXPRESS** 8:30 PM Daily  
Pullman and Coach service to Salt Lake City, Butte, Denver, Kansas  
City, Omaha, Chicago. Overnight Pullman to Las Vegas.

**UNEXCELLED DINING AND LOUNGE CAR SERVICE**  
UNION PACIFIC TICKET OFFICE - SAN PEDRO  
805 South Pacific Avenue  
Telephone Terminal 2-7531  
Be Specific... Go

**UNION PACIFIC**