

### Couple Named President Of Fellowship Forum

Mr. and Mrs. Hugh Rood were elected to the presidency of the Fellowship Forum Club of the First Christian church last Sunday evening in the annual election of officers held at the Higgins Brick Patio. Mrs. Fred Smith and Mrs. Kenneth O'Dell were chosen to serve as the secretaries, and Howard Huizing was elected treasurer.

The last meeting of the current year will be held in the home of Mr. and Mrs. Fred Smith May 27. At that time, Professor J. dela Haye of El Camino will present the last in a series of discussions on the "Underlying Causes of Protestant Reformation."

### Dinner, Program Slated By Community Church

An afternoon program to include a pot-luck dinner starting at 12:30 to be followed by a program featuring the King Sisters, a musical instrument and vocal group, has been announced by Rev. James Blake, pastor of the Hanoverton Tract Community Church, 20522 Elliott avenue.

Speaker of the afternoon will be Rev. Glen O'Neal of the First Brethren Church of Inglewood. The public is invited to attend the program, Rev. Blake said.

The regular morning worship service will include a children's object lesson, and the sermon on "Christ Among Us," the pastor announced.

### Probation After Death Christian Science Sermon

The benefits of acquiring a spiritual understanding of eternal life will be stressed in the Sunday lesson-sermon on "Probation After Death" in all Christian Science churches.

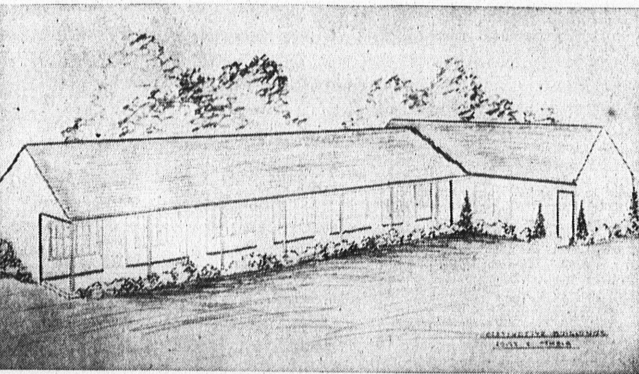
This citation from Proverbs (21:16-21) is the Golden Text: "The man that wandereth out of the way of understanding shall remain in the congregation of the dead." He that followeth after righteousness and mercy findeth life, righteousness and honour.

In a scriptural passage Peter declares, "Blessed be the God and Father of our Lord Jesus Christ, which according to His abundant mercy hath begotten us again unto a lively hope by the resurrection of Jesus Christ from the dead. To an inheritance incorruptible, and undefiled, and that fadeth not away, reserved in heaven for you" (I Pet. 1:3-4).

Selections from "Science and Health, with Key to the Scriptures" by Mary Baker Eddy include, "Our Master fully and finally demonstrated divine Science in His victory over death and the grave. Jesus' deed was for the enlightenment of men and for the salvation of the whole world from sin, sickness, and death" (p. 45).



SETTING THE STAKES . . . for the new Sunday School addition to the Nazarene Church are these members of the Church, Thurman Scroggins, superintendent of the Sunday School, wields the sledge while H. R. Lonn, building chairman, Linda Lonn, and Rev. W. A. Penner hold the marker stake. In the background (left to right) Mrs. Scroggins, Mrs. Penner, L. V. Foster, treasurer, and president of the Church Board, I. A. Showalter, Mrs. Lonn, and Mrs. Foster. (Here's photo).



NEW NAZARENE CHURCH SUNDAY SCHOOL UNIT  
... Ground Broken for 10 Classrooms

### Congregation members to Build New \$15,000 Sunday School Unit

With present facilities inadequate to handle an enrollment of the 165 Sunday School students, members of the congregation of the Nazarene Church last Saturday set out stakes and broke ground for a new \$15,000 classroom addition adjoining the church at 1501 West Carson street.

On hand for the ceremonies were Harold Lonn, cement contractor by vocation who will serve as volunteer building committee chairman.

The new unit, approximately 100 feet by 14 feet, is an "L" shaped building with seven classrooms and an assembly room which can be divided into three additional classrooms, according to Thurman Scroggins, superintendent of the Sunday School. A covered walkway provides access to the rooms. The building will be of frame and stucco construction with a composition shingle roof.

Funds to finance the structure are being raised by members of the Sunday School through a contest now in progress. The students are divided into four groups; the Army, Navy, Air Force, and Marine Corps. At present the Marines are leading the other three groups.

Labor on the project is being

### Rev. England to Speak On Choosing a Gospel

"Why this 'Gospel.'" will be the topic of Rev. Cecil J. England's Sunday morning sermon at the First Christian Church, he announced this week. Rev. England pointed out that many competing gospels exist today, and people are confronted with the problem of choosing from among them.

"A sound and careful sense of judgement is necessary to make wise choices," the minister said.

### Large Delegation Plans To Attend Convention

A large delegation of members from the Torrance Christian Church will attend the annual District Convention in Bellflower today, according to Rev. Cecil J. England, pastor.

The sessions are to begin at 2 p.m. and continue through the afternoon and evening, he said. A dinner will be served by the Bellflower church this evening at 6:15. Christian churches of the Harbor area will be represented at the meeting.

### STEEL PROCESS

The U. S. steel industry began to base its price on steel made with coal, rather than on steel produced by a process involving the use of charcoal as a fuel, as early as 1849.

### Representing PRUDENTIAL and HARTFORD



**LOANS IN 1 DAY** \$25 to \$1800 on your salary only

OTHER PLANS TO SUIT YOU

PHONE  
WRITE  
COME IN

There is probably a PUBLIC TESTED PLAN for you. Try our friendly, confidential service when you need money. Phone to arrange the details... then come in.

Convenient Monthly Payments  
Phone: Torrance 2814  
1623 Cravens Ave.  
**Public Loan CORPORATION**

**Gambles WESTERN AUTO SUPPLY CO.** The West's Oldest and Largest Retailers of Auto Supplies

**For Limited Time!**

# Sale! PLASTIC "ALPINE" SEAT COVERS

For Solid-Back Coupe **\$6.99**  
Reg. \$9.45

For Split-Back Coupe, as Illustrated, Reg. \$11.45 **\$10.99**

For 5-pass. Coupe or Coach, 4-door Sedan Reg. 18.95 **\$13.99**

Now, at trifling expense, YOU too can have these amazingly successful new-type "SARAN" covers for your car! Styled in attractive plaid patterns, they breathe — stay fresh and comfortable in extremes of heat, cold or dampness. You can't scuff them. You can easily wash off food, grease and dirt. Even battery acid cannot harm them! Come early!

**FREE INSTALLATION** by Factory Specialists!

**GIVE YOUR CAR THAT NEW SPRING LOOK!**

**FREE! 50c SPONGE\*** with Purchase of One Can Johnson's 'Car-Plate' and One Can Johnson's 'Car Nu' **\$2.19 Value**

\*O-CEL-O Sponges are popular 5 1/2" x 3 1/2" x 1" size

**12" by 14" CHAMOIS** First quality domestic chamois. Soft, absorbent and washable.

**"MONTEREY" PLASTIC SEAT COVERS** \$11.45 to \$24.95 According to Car

Custom-made quality at slip-on prices! Made of woven "Saran" fabric that resists every kind of damage — with the added advantage of painstaking skill in tailoring.

**Thermos Bottle** \$1.69

Keeps liquid hot for 24 hours or cold for 72 hours. Heat-resistant, unbreakable plastic cup. One-half pint size. Ideal for trips.

**SOCKET SET** REG. 13-2015  
8-piece set, 7 sockets and handle, 3/4" to 1 1/2" inclusive.

**WRENCH SET** Only 13-8932  
For ignition work, radio and appliance repairing. 8-pieces.

All Merchandise Subject to Stock on Hand. All Prices Subject to Government Regulations. — We Reserve the Right to Limit Quantities.

**Gambles WESTERN AUTO SUPPLY CO.**

1323 Sartori Ave., Torrance  
1049 Gardena Blvd., Gardena

**Change of Time...**

**Improved UNION PACIFIC Train Schedules**

**Effective Sunday, April 29,**

Union Pacific will adjust its train schedules to Daylight Saving Time, resulting in greatly improved service. The new schedules will be:

**Streamliner "CITY OF LOS ANGELES"** 5:00 PM Daily

**Streamliner "CITY OF ST. LOUIS"** 11:30 AM Daily

**LOS ANGELES LIMITED** 1:01 PM Daily

**PONY EXPRESS** 8:30 PM Daily

The only Streamliner between Los Angeles and St. Louis! Better-than-ever Coach and Pullman service through to Denver, Kansas City and St. Louis. New departure time and faster schedule with one-hour earlier arrival at St. Louis—11:59 a.m.—making all important train connections from that city. NO EXTRA FARE!

The only train from Los Angeles providing coast-to-coast service (no change of cars en route) at NO EXTRA FARE! Through Pullmans to Omaha, Chicago, St. Paul-Minneapolis and New York. Reserved-seat Coaches.

Pullman and Coach service to Salt Lake City, Butte, Denver, Kansas City, Omaha, Chicago. Overnight Pullman to Las Vegas.

**UNEXCELLED DINING AND LOUNGE CAR SERVICE**  
UNION PACIFIC TICKET OFFICE — SAN PEDRO  
805 South Pacific Avenue  
Telephone Terminal 2-7531  
Be Specific... Go

**UNION PACIFIC**

**Tartar Band Again Tagged 'Superior'**

Torrance High's band was tagged "Superior" at the State Band and Orchestra Festival at Fullerton last Saturday.

Competing in the Class A division, the 38-piece band received the top rating in competition with about 50 other bands from Southern California. Some bands had as many as 124 members, according to Harold Dunn, director of the Torrance Band.

Twenty-four of the bands paraded in Fullerton Saturday evening.

Each of the bandmen received a medal for participating in the "superior" band, Dunn reports. The festival was sponsored by the California School Band and Orchestra Association.

**INSULATION**

Why not beat the hot weather by having your home insulated. The same insulation saves on fuel bills in the winter and makes your home comfortable all the year 'round.

We have in stock "BALSAM WOOL," one of the first insulation products to be marketed for home comfort. This material comes in blanket form, just wide enough to lay between the ceiling joists. You can lay this yourself, thus saving quite a tidy sum for labor.

Drop in and see samples and let us quote you prices. The low cost will surprise you.

**JOSLIN LUMBER CO.**  
1782 West Carson  
Phone 475  
Open All Day Saturday  
Sundays Till Noon

**Super Kem-Tone** THE SENSATIONAL NEW SUPER WASHABLE READY-TO-USE WALL PAINT

IT'S Guaranteed Washable! Super Kem-Tone is easy to apply... goes on smoothly, uniformly over wall paper, paint, plaster, wood and other surfaces. Dries in less than one hour.

After it has thoroughly dried, SUPER KEM-TONE will withstand repeated washings with usual household cleaners without impairing its beauty!

**Top Value in Thrifty Beauty!**

The miracle wall finish made with oil, mixes with water! KEM-TONE is the outstanding value for good home decoration where extreme washability is not required.

Only \$3.98 per gallon... does average room!

**BORROW OUR BIG 100 PAGE SHERWIN-WILLIAMS STYLE GUIDE SEE YOUR HOME AS YOU WANT IT!**

**OUTSIDE... ON WALLS! SHERWIN-WILLIAMS SWP HOUSE PAINT IS WEATHERED**

For your protection against: excessive loss of gloss; color fading; high dirt collection; rapid erosion; uncontrolled chalking; cracking; mildew and fungus.

"Every drop of SWP is tested for its ability to resist each of these types of deterioration before it is permitted to bear the Sherwin-Williams label."

**KEM-GLO** THE MIRACLE LUSTRE ENAMEL! An almost like-finish that goes on easier than any enamel you ever used. Gorgeous colors! No brush marks... dries 3 to 4 hours... one coat covers most surfaces!

**SHERWIN-WILLIAMS PORCH AND FLOOR ENAMEL** One coat usually covers solidly dries overnight... Provides extra tough protection and rich lustrous beauty at the same time. Wear and weather resistant. For kitchen, porch and playroom floors. Stairs, worn printed linoleum... GAL to wear or weather!

**HOME DECORATION SERVICE SHERWIN-WILLIAMS CENTER PAINTS**

1632 CAHILL AVE. — PH. 2175 or 2196 OR YOUR NEARBY SHERWIN-WILLIAMS DEALER