

PASTOR TO SPEAK ON METHODIST TEACHINGS

Last week during Visitation Week in the First Methodist Church of Torrance, teams of laymen and the minister spent afternoons and evenings calling on prospective members, resulting in a number of decisions from people who plan to unite with the church on Easter Sunday. In preparation of these and

Reflections

By J. Hugh Sherfey, Jr.

Free Enterprise Beats Tyrants

You're going to buy a pair of shoes. Think of the Free Enterprise entering into this transaction: the man who raised the cattle, the man who bought the hides, the tanner, the railroad that took them to the manufacturer, the salesman who sold the shoes to the wholesaler, the truck that brought them to the local merchant, who invested his money so you could buy those shoes. A big bank in the beginning it was one man who treated his customers fairly, gave them service, and grew big. Back of every butcher shop, grocery store, this newspaper, big department store, little paint store, camera or shoe shop, is a man who depends upon each of us to stay in business. That's Free Enterprise.



Free Enterprise has made Torrance a thriving city. It has given us distinctive homes, with more gadgets, to make life more enjoyable than anywhere else on earth. Free Enterprise provides opportunity for our sons to go broke or make their fortunes. Free Enterprise is the one ingredient that can and does beat tyrants.

We can lose it or increase it. Which shall it be?
"WE HAVE SERVED THIS COMMUNITY FOR 29 YEARS"

Stone and Myers
General Discounter and Advisors
—SINCE 1922—
1321 ENGRACIA AVE.
PHONE TORRANCE 195

CIVIL SERVICE EXAMINATIONS for the CITY OF TORRANCE

Open competitive examinations will be given in the near future for the following classifications:

CITY ENGINEER

(Starting Salary: \$500 to \$600 per month)

AUTOMOTIVE EQUIPMENT MECHANIC

(Salary \$242.00 to \$290.00 per month)
(Plus \$20 per mo. cost of living adjustment)

BUS ATTENDANT

(Salary \$193.00 to \$231.00 per month)
(Plus \$20 per mo. cost of living adjustment)

LABORER

(Salary \$184.00 to \$221.00 per month)
(Plus \$20 per mo. cost of living adjustment)

All candidates must be citizens of the United States and bona fide residents of the City of Torrance for at least one year immediately preceding the date of filing. However, the city residence requirement is waived in the examination for City Engineer.

Applications may be secured at the office of the Personnel Clerk, Room 2, City Hall, Torrance, Calif.

LAST DAY FOR FILING APPLICATIONS
Wednesday, March 14, 1951, at 5:00 p.m.

Quartet to Sing This Sunday at Central Church

The Green Hills Memorial Park male quartet will present a musical program at the Central Evangelical United Brethren church, Marcelina and Arlington avenues on Sunday evening, March 11, at 7:30 o'clock, according to Rev. U. S. Schauer, pastor.

The appearance of this popular male quartet has been made possible through the courtesy of C. E. Walls, Torrance representative of the Green Hills Memorial Park. The quartet is composed of three brothers, Stanley, Henry and Leonard Brummett and James Birmingham. They are in constant demand for appearances before church audiences, service clubs and other organizations. They have sung frequently over the radio. The public is cordially invited to hear them.

Rev. Schauer will continue his series of Lenten messages in the 11 a.m. service Sunday morning when he speaks on the topic, "Life Is Like That."

LAST WITH RAILS

Washington was the last state to have railroad service.

Rev. Bello Cites Belief in God As Man's Best Weapon in Red War

A belief in God Almighty and a demonstration of that belief was listed as one of the chief methods of a free individual has today of fighting Communism by Rev. Arthur E. Bello last Sunday.

Delivering the third and last in a series of sermons about Communism, Rev. Bello listed for his congregation several methods by which the individual could combat the pagan force.

"Keep up to date on Russia," Rev. Bello told his listeners. Besides knowing what the Reds are doing, the minister recommended that Americans insist that business, the trades, and the professions quit doing things that result in the over-extension and over-expansion of government.

He also recommended that Americans invest in free enterprise, keep the Comites out of labor organizations, speak up for the American way of life, be politically active, and to be a Christian and an American.

"Don't be hypocritical, and don't blame others for your own negligence," he said.

Sunday's sermon on the Communist menace concluded the series being given by the pastor.

SHORT RIVERS

New Zealand's longest river is only 80 miles long.

Missionaries from Brazil To Talk Here

Rev. and Mrs. Harold Williams, who have returned on furlough after five years missionary work in Brazil, will speak Sunday morning to the Sunday School at 9:30 a.m. and also in the morning worship service at 10:45 a.m. at the Torrance Foursquare Church, located at 1207 El Prado.

These missionaries will be returning to Brazil shortly and this gives everyone an opportunity to hear missionaries direct from this field. Brazil is open to the Gospel.

Friday, March 9, 7:30 p.m., Bernice Bussie will be the guest speaker in this evangelistic service in the Foursquare Church. Everyone is cordially invited.

LOW COST PLANE

First complete airplane built by the Wright brothers, used in history's initial flight at Kitty Hawk, N. C., cost less than \$800 to build.

Rites Set For Longshoreman

Rites in a San Pedro funeral chapel will be held this afternoon at 2 p.m. for Victor William Wiese, 45, of 1643 West 220th street. Wiese, a longshoreman, has lived in the Harbor area for nearly 22 years and about ten of those in Torrance.

He died this week in a Long Beach hospital. In charge of the last rites is McNeerney Chapel in San Pedro. Interment will follow in the Green Hills Memorial Park.

FIRST CHURCH OF CHRIST, SCIENTIST
218th and Manuel - Torrance
SUNDAY MORNING SERVICE AT 11 A.M.
SUNDAY SCHOOL 9:30 A.M.
WEDNESDAY EVENING MEETING AT 8 P.M.
READING ROOM IN CHURCH EDIFICE OPEN DAILY 11 A.M. TO 4 P.M. EXCEPT SUNDAYS and HOLIDAYS. MON. & FRI. 7-9 P.M.

EXPORT DEFICIT

Egypt suffered a billion dollar loss in export trade in 1949, due to the devaluation of Egyptian currency.

INSECT STUDY

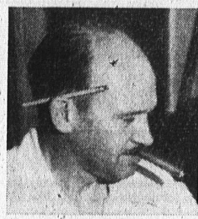
Science has tabulated more than 621,000 species of insects in the world. About 20,000 are known to exist in the U. S.

In Torrance it's La Mode Furniture for
Maple Furniture
of Your Choice



One piece or a house full... we are qualified to take care of all your maple furniture wants no matter how large or how small. Your living room, bedroom, dining room or den will be outstanding when you use authentic maple made by nationally known manufacturers.

La Mode
FURNITURE STORE
1513 CABRILLO, TORRANCE PHONE 545
OPEN FRIDAY NIGHTS UNTIL 9 P.M.



HANK SAYS:

Dollar for Dollar
Penny for Penny
and
Item for Item
You always get more for your money at Greater Torrance Market, "The friendliest Market in Town"

VENUS 3-lb. Bag LARGE WHITE BEANS 21¢	SILVER COLORED OLEO 27¢ c lb.	IRIS 1-Lb. Tin COFFEE 79¢	DEL MONTE—No. 2 1/2 Can SAUER-KRAUT 15¢
--	---	--	---

MEATS

Top Grade — Lowest Prices
Here are just a few of our many WEEK-END SPECIALS!

SUPER QUALITY BEEF SIRLOIN STEAK	87¢ c lb.
SUPER QUALITY BEEF T-BONE & CLUB STEAKS	92¢ c lb.
ARMOUR'S STAR LINK SAUSAGE	59¢ c lb.
KINGAN'S TENDERMEAT PICNIC HAMS	47¢ c lb.
KINGAN'S EASTERN FULL SLICES SLICED BACON	39¢ c lb.
ALL MEAT FRANKFURTERS	49¢ lb.

TORRANCE'S FINEST—FRIENDLIEST MARKET

GREATER TORRANCE MARKET

Limit Rights Reserved—Tax Will Be Added to Taxable Items

SHURFINE—3-lb. Tin Pure Vegetable SHORTENING 79¢	Nation's Taste—Jumbo 46-oz ORANGE JUICE 23¢	KRAFT'S 2-lb. Box VELVEETA 85¢	SNOW BELLE Tall 1-lb. Can SALMON 45¢
CLAPP'S STRAINED BABY FOOD	12 cans for 89¢	PURITY ICE CREAM	2 Pts 35¢
RIVIERA—7 1/2-oz. can—Beef or Chicken Tamales or Ravioli	3 FOR 25¢	VENUS—13-oz. can—PURE DATE PRESERVES	2 FOR 29¢
LADY'S CHOICE 2-lb. Jar GRAPE JELLY	GIANT SIZE WHITE KING SOAP	BOCANCO No. 303 Can PEAS	BETSY ROSS 24-oz. GRAPE JUICE
29¢	55¢	11¢	33¢

Winesap Newton Pippin Delicious APPLES 5¢ LB.	Extra Fancy Green BELL PEPPERS 2 Lbs. For 19¢	Large, Solid, Crisp HEAD LETTUCE 6¢ EA.
U.S. No. 1 RUSSET POTATOES 10 Lbs. For 29¢	Extra Fancy Fuerte AVOCADOS 2 FOR 19¢	

CORNER of ARLINGTON and TORRANCE BLVDS. - TORRANCE
OPEN EVERY DAY—FRIDAYS 'til 9 P.M.—Prices Good Thursday, Friday, Saturday, Mar. 8-9-10