

PLENTY OF
FREE PARKING



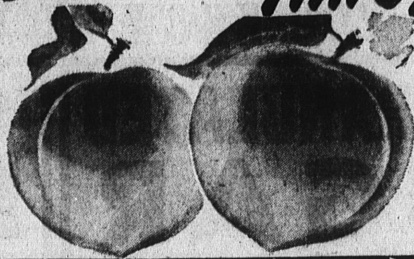
ROTHS
GARDEN
FRESH
PRODUCE

PRICES FOR
TORRANCE AND
HAWTHORNE STORES



3 BIG DAYS
THURS. - FRI. - SAT.

It's
CANNING
time!



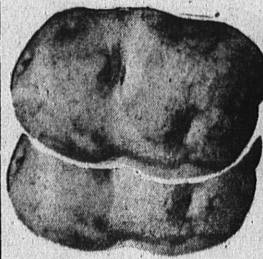
FREESTONE ELBERTA

PEACHES

By the
Lug
\$1.59
23 lb. Average
Finest
Quality

7 ¢
lb

U.S. No. 1
LARGE
WHITE ROSE

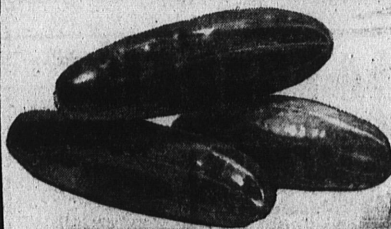


POTATOES

10 lbs **29** ¢

KENTUCKY WONDER STRING

BEANS 2 lbs **17** ¢



CUCUMBERS
LONG
GREEN
55c LUG **5** For **5c**

SWEET JUICY VALENCIA

ORANGES 5 lbs **19** ¢

GOOD SIZE WHITE MEAT
WALNUTS

25 ¢
lb.

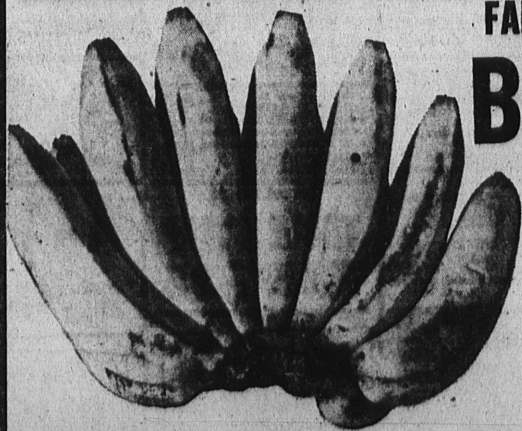


FRESH TENDER
CELERY
LARGE STALKS

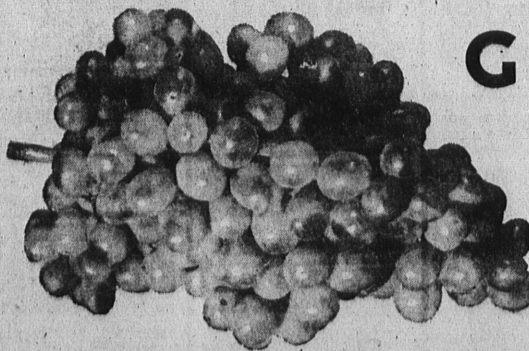
4 ¢
lb.

FANCY CENTRAL AMERICAN

BANANAS



10 ¢
lb.



THOMPSON SEEDLESS
GRAPES

10 ¢
lb.

ROTHS SELF-SERVICE COMPLETE DELICATESSEN DEPARTMENT

Fine Quality Large

Bologna

29 ¢
lb.

Large Eye

Swiss Cheese

49 ¢
lb.
BY THE
PIECE

Fresh Sliced

Pimiento Loaf

39 ¢
lb.

Full Cream

LONGHORN
CHEESE

39 ¢
lb.

BORDEN'S or PHILADELPHIA
CREAM CHEESE **14** ¢
3-OZ. PKG.

BORDEN'S or KRAFT'S
Cottage CHEESE **21** ¢
1 lb. Pkg.

LASCO SPICED
CUT HERRING **39** ¢

39 ¢
16-OZ. JAR
KAUKAUNA
CHEESE LINKS

39 ¢
PRG.
FRESH MADE
POTATO SALAD **29** ¢
lb.