

THURSDAY  
FRIDAY  
SATURDAY

# WE'RE CONTINUING

Our  
Colossal

# FOOD S

## PORK LOIN ROAST

Rib End **37<sup>c</sup> lb.**

★ Shoulder Roast Shank Cut **27<sup>c</sup> lb. ★**

★ PORK CHOPS Rib End **35<sup>c</sup> lb. ★**

★ SPARE RIBS Lean Eastern **33<sup>c</sup> lb. ★**

★ PORK CHOPS Center Cut Rib **55<sup>c</sup> lb. ★**

★ Eastern Mild Sugar-Cured Sliced

**BACON** Layer Full Slices **27<sup>c</sup> lb.**

Grain-Fed Steer

★ **BEEF** ★ Juicy and Tender **33<sup>c</sup> lb. ★**

★ CHUCK ROAST **33<sup>c</sup> lb. ★**

★ BOILING BEEF Fancy Steer **15<sup>c</sup> lb. ★**

Well Trimmed

**STEAKS** RIB OF SIRLOIN **55<sup>c</sup> lb.**

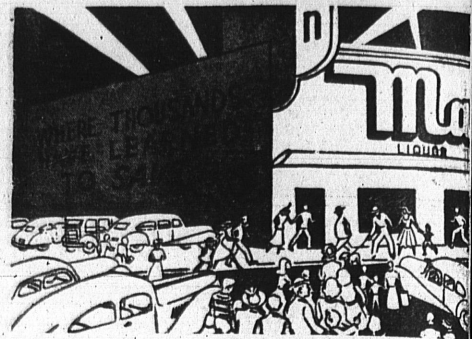
★ BACON Squares Hickory Smoked **15<sup>c</sup> lb. ★**

★ Swift's Premium or Hormel's **HAMS** Whole or Shank Half **49<sup>c</sup> lb.**

★ SLICED BEEF LIVER **45<sup>c</sup> lb. ★**

IN GARDENA  
CRENSHAW BLVD.  
CORNER COMPTON

Market-Town Markets Open  
Daily & Sunday - 9 a.m. to 10 p.m.



DELTA RICH FINE SALAD

**TUNA** 3 Full No. 1/2 Cans **49<sup>c</sup>**

LADY'S CHOICE GRAPE

**JELLY** 2 Pound Jar **25<sup>c</sup>**

GOLD MEDAL

**FLOUR** 5 Lb. Bag 45<sup>c</sup> | 10 Lb. Bag 85<sup>c</sup>

PETER PAN

**SALMON** Tall Lb. Can **33<sup>c</sup>**

## CHECK OUR DAY

AND YOU'LL SEE WHY THOUSANDS H

Del Monte Golden **CORN** 3 Full 17 oz. Cans **39**

Libby's Deep Brown **BEANS** 4 Large 14 oz. Cans **39**

Calif. Days Tomato **JUICE** 5 Full No. 2 Cans **39**

Hunt's Garden **PEAS** 4 Full 17 oz. Cans **39**

Dennison's Fancy **CATSUP** 3 Large 14 oz. Bottle **39**

Norma Fancy **Spin'ch** 4 Full No. 2 Cans **39**

Del Monte Diced **BEETS** 3 303 Glass Jars **39**

## WESSON OIL

Pint Bottle **26<sup>c</sup>** | Quart Bottle **49**



**FISH**

FRESH WHITE FILLET **35<sup>c</sup> lb.**  
SLICED HALIBUT **49<sup>c</sup> lb.**  
FANCY SCALLOPS **65<sup>c</sup> lb.**  
GREEN SHRIMP **39<sup>c</sup> lb.**  
FRESH OYSTERS (Pint Jars) **59<sup>c</sup>**



Thursday, Friday & Saturday  
March 16, 17, 18  
Only

IN HAWTHORNE MARKET-TOWN ONLY

Race Track Coffee Cake **19<sup>c</sup>**  
(Reg. 25c ea.)  
Devil's Food Deluxe Square **59<sup>c</sup>**  
(75c value) 30c half  
Shamrock Cookies **15<sup>c</sup> doz.**  
Friday, March 17, Only  
St. Patrick Cup Cakes **5<sup>c</sup>**  
Shamrock Pastries **10<sup>c</sup>**



SAVE 40%  
REDEEM COUPONS HERE

Duff's Devil's Food Mix **17<sup>c</sup>** WITH COUPON

Duff's White Cake Mix with coupon **23<sup>c</sup>**  
Duff's Gingerbread Mix with coupon **16<sup>c</sup>**  
Duff's Hot Roll Mix with coupon **15<sup>c</sup>**

RITZ CRACKER COUPON WORTH **27<sup>c</sup>**

Your nice things are **SAFE** in LUX!