

# Sports

## STARTING LINEUPS

TORRANCE vs. ROSEMEAD  
AT TORRANCE HIGH SCHOOL STADIUM  
FRIDAY, SEPTEMBER 23  
GAME TIME—8 P. M.

TORRANCE			ROSEMEAD		
No.	Wt.	Pos.	No.	Wt.	Pos.
12 Kulp, John	154 (SR)	LE	180 Johnson, Jim	(J)	41
55 Leech, Jim	163 (J)	LT	175 Klumb, Fred	(J)	38
10 Vorhis, Charles	165 (SR)	LG	185 King, Gordon	(J)	42
59 Douroux, Peter	170 (SR)	C	165 Carter, Robert	(J)	19
44 Costa, Frank	150 (SR)	RG	170 Russell, Carol	(J)	36
42 Crosshaw, Doyal	168 (J)	R.T	200 Kaplan, Rudolph	(J)	45
13 Vaughn, Wendel	165 (SR)	RE	170 Armstrong, L.	(SR)	27
33 Crawford, Boyd	153 (SR)	QB	155 Pierce, Fred	(S)	14
35 Clevenger, Joe	155 (J)	F.B	175 Cornett, Don	(SR)	33
30 Dandoy, Aramis	150 (J)	LH	145 Sangster, Robert	(J)	13
11 Faren, Jack	147 (J)	RH	180 Sweet, James	(S)	34

(SR) Indicates Senior; (J) Indicates Junior; (S) Indicates Sophomore

### Bowlers Sought

Las Vecinas bowling team, of Seaside Ranchos, bowls each Friday evening at the 101 Alleys. The team is looking for more bowlers.

### Alondra Park Almost Ready

Gomer Sims, co-owner of the new Alondra Park Golf Course, being built just West and North of Keystone, reports that all contours and hazards have been laid, and that seeding on one green and three fairways will put the course into competition, except for the work needed from Mother Nature. The fairway and green turf, most of which already is being mowed, will be ready for play shortly after the new year.

### STRANGE MEDICINE

Cobra, moccasin venom and bee stings are occasionally used in the treatment of arthritis.

### Tarbabes Hit the Road for Grid Opener

Torrance's Tarbabes will get the jump on the starting piskin whistle over their big brothers, the Tartar Varsity when they open against the Rosemead Bees this afternoon on the opponent's turf.

"Green, green as the grass we'll play on," means Mentor Cliff Graybehl. "But then, so is Rosemead. They are a brand new school so they haven't got such a big hammer over our head."

### Prognosticators Pigsaw Pickers Back Once Again

According to Coach Graybehl he will call 17 seven returning lettermen to start the '49 grid season. Back from last year are:

"Lefty" Scholl, a made-over end who will shuttle at right half.

Dick Carrow at the right end of the line.

Tommy Giatras at the other end of the line.

Chuck Wilson in left guard.

Chuck Mumford huddled over the piskin at center.

Frank Schmidt at right guard.

And a letterman, though not from Torrance, is Narbonne's former tackle, G. G. Johnson.

Completing the line-up are Bill Gray, who lost his arm in a train accident in February of this year. Bill will be in at left tackle.

At the signal calling spot is Irwin Kasten.

Rudy Flores at left half.

And at fullback is Bill Crawford, cousin to Boyd Crawford, co-captain of the varsity.

Several other "look-gooders" (Continued on Page 5)

### New Scoreboard Dark for First Grid Contest

Torrance High's football field will be lit up (for the first time tomorrow night) like a Christmas tree—except for the ornaments—namely the new electric scoreboard.

The lighted board will be dark for the Tartars' opening game due to the lack of a latch snatch catchbracket which is scheduled to arrive from Chicago.

The board, supplied by public subscription through the efforts of the Torrance Athletic Boosters, and being placed in operation by the School District, probably will be ready for the next home game.

### Pigskin Pickers Back Once Again

Revising a popular feature of last gridiron season the Torrance Herald once again presents the "Pigsaw Prognosticators."

However, this year the Herald Sports Department is extending the scope of the weekly feature. Anyone wishing to join in will be welcomed into the inner sanctum of grid game guessers.

Last year Ray Rogers, well known sports enthusiast, took the thimble-sized loving cup for being the top prognosticator of the season.

Those who wish to participate in this weekly feature are invited to drop the Sports Editor a card or phone (not later than Tuesday noon) indicating who will win the coming game—Torrance or their opponents... and by how many points.

Here are a few guesses on how this week's affair is being picked:

Torr. Rosemead	
Police Chief Stroch	6
A. C. Turner	6
Milt Isbell	6
Jack Baldwin	13
George Barker	6
"Red" Moon	13
Judge Willett	6
Mrs. E. C. Narrot	18

### JALOPY RACES

On Kidney-Shaped Dirt Tack

30 Cars - 3 Abreast

IN MAIN EVENT

Sunday Aft. Sept. 25th

T. T. I. P.M. 1st Ev. 2:30.

### MOTORCYCLE RACING

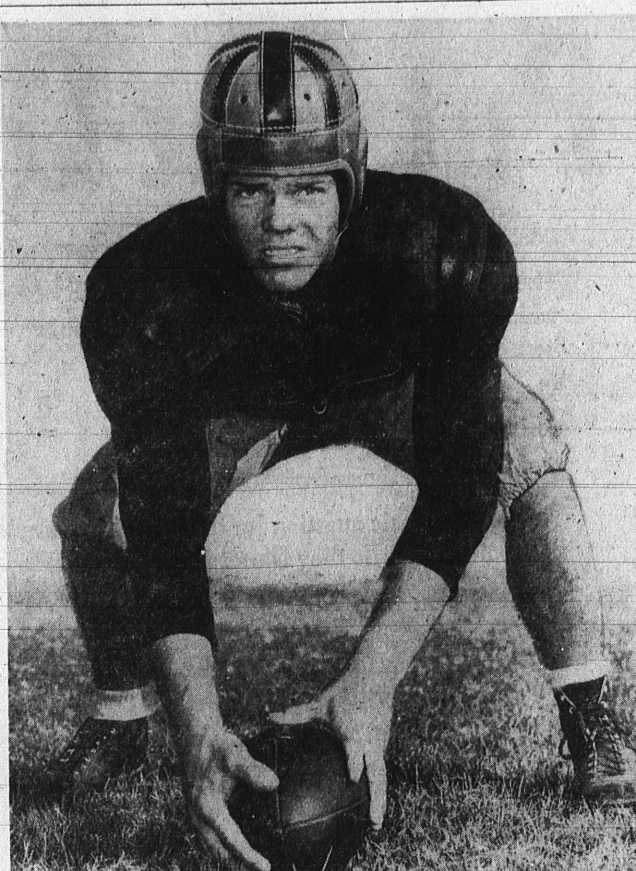
EVERY TUESDAY 8:30 P.M.

ADULTS \$1 Inc. Tax

JUNIORS

Kids under 12—FREE (Accompanied by Adult)

CARRELL SPEEDWAY GARDENA 174th AND VERMONT



OLD FACE, NEW PLACE... All-Bay League Tackle in '48, Co-Captain Douroux will handle the center spot on the '49 Torrance Varsity which opens tomorrow night against Rosemead under the new arcs at the local high school. Kick-off 8 p.m.—Herald Photo

### Varsity Set to Roll Under New Lights, Stands

The 1949 model of Torrance High School's gridiron machine is ready to roll.

Under the freshly installed floodlights, surrounded by new bleacher sections, the latest copy of Torrance's Terrible Tartars will take the field Friday night in the curtain-raising performance of a stiff nine-game schedule.

Rosemead High School is the big test.

Against Rosemead's power-laden crew, Tartar Coach Eddie Cole will pit the outcome of weeks of intensive drill with a squad that was "green as a shamrock" a comparatively short while ago.

Cole, who will depend more upon rock-sock football in preference to razzle-dazzle, has whipped into shape a better than average squad which will be harder to beat than Cole's king-sized tears would indicate.

The line, built around Co-captain Pete Douroux at center and pass-snagging Wendel Vaughn at left end should be tough on defense, a real pusher on the march.

Torrance's first line backfield of Boyd Crawford in the slot, Joe Clevenger at fullback and Aramis Dandoy and Jack Faren at the halves, looks good offensively. Defense from this quarter is an unknown quantity.

Offensively, Cole has come up with what he likes to call a "spinning single wing" formation. This is a combination of the better points of the modern T with the old reliability of the single wing. It provides for a concentrated line and air attack.

Will the Tartars really roll? Coach Cole, in one breath tells you, "—we don't have a chance." A moment later however, he'll call attention to a smart back, a masterminding lineman, a rugged guard, the perfect execution of a tricky play. He's got hopes.

And he's looking to parlay those hopes into a Bay League championship.

Just how far he can go with what he's got will become more apparent against Rosemead Friday. The visitors, coached by Aubrey Tapp, former Washington State great, boast a team studded with 200 pounders. And according to advance information, the Tappmen have been taught the advantage of throwing their weight around.

The game itself is a non-Bay League contest.

The stands will start filling up at 7 p.m. for the 8 o'clock kickoff.

### JALOPIES HEADLINE RACING CARD AT CARRELL SPEEDWAY ON SUNDAY

Jalopies of the pre-war variety, dating in vintage from 1938 and older, headline the racing card at Carrell Speedway, 174th and Vermont in Gardena, Sunday afternoon.

Thirty cars will meet in the 25-lap main event, starting three abreast. Trials for the classic will begin at 12:30, while the Trophy dash, first of the competitive events, gets the green flag at 2:30.

Dempsey Wilson won last week's feature.

Indications are that Carrell Speedway will pass its quarter-millionth customer of 1949 through the turnstiles this weekend.

### TORRANCE POLICE LOSE 2-1 BATTLE

Held to three hits, the Torrance Police dropped a hard-played 2-1 nod to the L. A. Senators in a Southern California Semipro baseball game at Torrance City Park last weekend.

R. H. F. L. A. Senators 000 000 0 - 2 5 1  
Torrance Police 001 000 000 - 1 3 4  
Gentley, Morris and Storm, Rosenfield, Meyers, Theodosis and Mueller.

### Lady Angler Lands 16-pound Halibut

Friends and neighbors of Mabel Conger, 1611 Post avenue, last week ate halibut, after the angler landed a 16-pound catch.

Mrs. Conger's fish put her in second place in the Redondo Beach Chamber of Commerce fishing derby.

### KILL ATHLETES FOOT "TE-OL BEST SELLER" SAYS PROFESSIONAL PHARMACY

HERE'S THE REASON: The germ grows deeply. You must REACH it to KILL it. TE-OL, containing 90 percent alcohol, PENETRATES. Reaches more germs. Your \$3c back from any druggist if not pleased in ONE HOUR.

### Torrance Nine Loses Twice

National Supply softball team of Torrance dropped its first two games last weekend in the Southern California Open Softball championships at Long Beach, losing in the first round, 1-0 to Riverside, and then dropping another close one, 2-0, to S. & M. Transfer of Redondo Beach in the consolation.

The latter defeat dropped the club from the tournament, which is played at double elimination.

R. H. F. National Supply 000 000 0 - 0 4 2  
S. & M. Transfer 001 100 0 - 2 2 0  
Green and Maloney, Austin and Rayburn.

### The LAST WORD



As Paris is to women's fashions, the TORRANCE NATIONAL METER CHECK PLAN is to your checking needs... It is the "LAST WORD" in efficiency and economy... Come in today and we will be glad to show how simple it is to be a TORRANCE NATIONAL METER CHECK PLAN USER.



"A FRIENDLY TORRANCE INSTITUTION"

**TORRANCE NATIONAL BANK**

Torrance California

MEMBER OF FEDERAL INSURANCE CORP.

**Have Fun!**  
Nothing To Buy  
No Obligation

Just Be A Judge In Our Window Decorating Contest

**El Prado Furniture**  
1306 Sartori - Ph. Tor. 1067

Western Stores WESTERN AUTO SUPPLY CO. Western Stores

## PAINT-UP NOW!

A sale to enable you to beautify the appearance of your home at a very small cost.

Here's \$5.10 per Gallon Quality PAINT \$3.98 PER GALLON

**"CREST DELUXE" Bicycle Tires**  
Reg. \$1.95 **\$1.69**  
Two-ply construction with deep non-skid tread. Designed for longer wear. 26x1.125 and 24x1.125

**"CREST DELUXE" Bicycle Tubes**  
Reg. \$1.09 **88c**  
Made of butyl rubber. Will hold air 10 times longer than natural rubber tires. 26x1.125 and 24x1.125

**UP TO \$6.00 TRADE-IN ALLOWANCE FOR YOUR OLD BATTERY**

**12-MONTHS GUARANTEE** \$6.95 Ex.  
Fits most Chevrolet, Dodge, Chrysler, Ford, Kaiser, Nash, Plymouth, Studebaker and some other cars.

**24-Months Guarantee** \$9.95 Ex.  
Fits all cars listed above. Also Hudson, Lincoln and Mercury.

**30-Months Guarantee** \$12.95 Ex.  
"VARCON SUPER-ACTIVE" with "Fiberglass" insulation. This outstanding quality battery fits all cars listed above. Some liberal trade-in allowance on any other size.

**It's 'HOMEguard' EXTERIOR WHITE**  
Truly a first quality paint... spreads smoothly... gives extra coverage... long lasting... does a thorough job... hides the old surface with an enchanting whiteness. "Homeguard" is compounded from finest ingredients.

**INTERIOR GLOSS**  
Reg. \$4.85 **\$3.98 GAL.**  
Dries in 12 hours... does not chip, crack, peel or show brush marks. Easy to apply. Mirror-like finish. Washable.

**ONE COAT FLAT**  
GALLON \$3.59 Qt. \$1.10  
One coat does a thorough job. Dries quickly. So easy to apply! See our color chart for 54 shades and tones for interior decorating.

**TURPENTINE Quart 33c**  
100% Pure Steam Distilled

**Western Stores**  
WESTERN AUTO SUPPLY CO.  
1323 SARTORI AVE.  
PHONE TORRANCE 265

**THE WEST'S OLDEST and LARGEST RETAILERS OF AUTO SUPPLIES**

FOR A PERFECT DATE!

**BOWL**

You'll have a time you won't soon forget. The fascination of friendly competition will make it a spirited occasion. Dress, of course, informal, and gaiety is the keynote.

**TORRANCE BOWL**  
1953 CARSON... TORRANCE 748