

### Details of Two Types of Social Insurance Told

EDITOR'S NOTE: This is the third of a series of articles explaining the Federal old-age and survivors insurance.

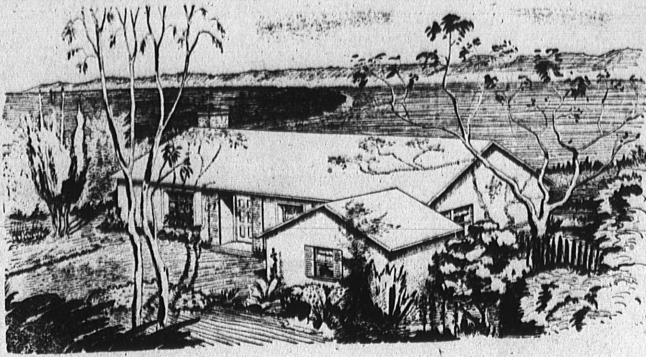
**How Does a Worker Become Insured?**—There are two kinds of insured status. Workers may be fully insured or currently insured. To be fully insured, a worker must have been paid \$50 or more on a job covered by social security in at least half the number of calendar quarters (the 3-month period beginning January, April, July, and October) as there are between January 1, 1937 (when the program began) and the quarter in which he becomes 65 or dies. If he became 21 on or after January 1, 1937, he must have been paid wages of \$50 or more in at least half as many calendar quarters as there are between his 21st birthday and the time he dies. Once a worker has 40 quarters of coverage he is fully and permanently insured.

In no event can a worker be fully insured unless he has been

paid \$50 or more in each of at least 6 calendar quarters. To be currently insured a worker must have been paid not less than \$50 in each of 6 or more quarters during the period consisting of the quarter in which he died and the 12 calendar quarters immediately preceding such quarter. A worker may get a statement of the amount of wages which have been credited to his account. Post cards for making this request can be obtained at any social security field office.

**Who Gets the Benefits?**—The monthly payments made under this program fall into two main groups:

1. To fully insured wage earners age 65 or over who are no longer earning more than \$14.99 a month in social security employment, to their wives age 65 or over, to their unmarried children under age 18.
2. To the survivors of insured workers who have died. These may be unmarried children under 18, widows (of any age) who have such a child in their care, widows age 65 or over, and dependent parents age 65 or over. (Fully insured status is required for payment to widows age 65 or over who do not have a child of the wage earner in their care or to parents. Others in this group paid on the



**GOING FAST . . .** Attractive Sea View Homes on the northerly slope of the Palos Verdes Hills in Torrance were purchased by more than 30 veterans and non-veterans last week end. Edwin A. Tomlin, sales representative, claims the homes are sold for \$175 down payment with monthly payments of \$66.

### VFW Play Dates Set in Mid-July

With proceeds scheduled to be used in the promotion of the Walteria Boy Scout Troop which they sponsor, the VFW will stage a three-act comedy "Oil Is Where" on July 13 and 14.

The play, already partly cast, will be "studded" with local talent according to Mrs. Eileen McKay, director. Persons wishing to take part in the production may contact the director at the Plaza Hotel.

The production may be staged in the civic auditorium or in one of the local theaters, stated Jess Dean, commander of the local VFW Post.

#### WATCH OUT

More than 4,000 children were killed in automobile accidents during 1947. Most of them were killed while playing along our streets and highways during the summer months. That is the time for motorists to use extra caution, to keep eyes open for children who might dart into the street without warning.

#### PERFUME CARE

When perfume is not being used, store in a cool dark place.

### Illegally Drawing No-Work Checks Lands Man in Jail

For drawing \$32 in unemployment insurance while working at a local factory, John T. Fleming, 2164 Torrance boulevard, is currently spending 15 days in the county jail, according to Fred Boren, supervisor of unemployment insurance.

Fleming was brought before City Judge Otto B. Willett on May 20 charged with violation of the unemployment statutes and with petty theft. The judge sentenced him to spend 15 days in jail on the first charge and suspended a 60 day sentence on the second count on the condition he repay the \$32 within 90 days.

The state official claimed Fleming was employed at the American Rock Wool Company at the time he drew two checks from the California State Employment office at 1628 Cravens avenue.

**SOLVENT ANTIDOTE**

By washing hands and forearms in diluted vinegar prior to using, irritation from cleaning solvent can be avoided.

### Couple Open New Gasoline Station

Everett and Nelly Isley, longtime residents of Torrance, announced the opening this week of their "Save 5c" automobile service station on the corner of Carson and Main Streets.

"Isley's Service" will be the name of the new station which will be operated twenty-four hours per day with full automobile service on the round-the-clock basis.

Everett Isley has many friends among the motorists in Torrance. He was formerly in the service department of Schultz and Peckham, local Ford dealers.

**WARNING**

Pedestrians are warned to observe extra caution when crossing streets just after sundown. Visibility is very poor during early evening hours, and the wise pedestrian will cross only at intersections and only after looking both ways for approaching vehicles.

**PARTIES**

Parties can be given not only for old friends but to make new ones.

basis of either fully or currently insured status.)

When there is no survivor immediately eligible for monthly payments at the time of the wage earner's death, a lump-

sum payment may be made to a widow or widower living with the wage earner at the time of death or, if there is no widow or widower, to whoever paid the funeral expenses.

**WALNUTS**

The winter's cold should result in a heavier bloom of walnuts than for many years and probably the greatest potential per tree crop in history.

PLENTY OF FREE PAVED PARKING AT

# HINCKLEY'S

Lomita's Complete "One-Stop" Food Market

241st and NARBONNE AVE. - LOMITA - PHONE 444

Open Daily 8 A.M. To 12 Midnight Daily and Sunday

These Specials for Thurs., Fri., and Sat., June 2, 3 and 4

Plenty of Free Parking Space on Hinckley's Paved Parking Lots

Shop at your convenience

Evenings and Sunday at our DELICATESSEN DEPARTMENT

It is Modern Self-Service

Open Evenings and Sunday 'Til Midnight

No Waiting - No Guessing! - You see exactly what you want and the price and weight is plainly marked on every package. All luncheon meats are wrapped here and only the finest and freshest meats obtainable are used! A visit to Hinckley's Delicatessen will delight you!

In Our Self-Service Delicatessen Dept.

**SWIFT'S PREMIUM WIENERS** In 1-lb. Cello Pkgs. **47¢**

**TIDE** Large Package **25¢**

**MILK** Tall Cans **11¢**

**PUREX** The Gentle Bleach **12¢**

**PEACHES** Westlake, Halved Large No. 2 1/2 Cans **19¢**

**SOAP** White King GRANULATED Lge. Pkg. **25¢**

**CORN** Large No. 2 Cans **15¢**

**WHOLE KERNEL**

**ICE CREAM** Mountain View's Richmaid Full Qt. **19¢**

**COFFEE** Hills Bros. Red Can All Grinds Grade AA - Local Fresh 1-lb. Can **49¢**

**LARGE EGGS** 59¢ doz.

**CATSUP** Westlake Lge. 1-lb. Cn. **10¢**

**TOSHI'S FRUITS & VEGETABLES**

Fresh - All Green **ASPARAGUS** 2 Lbs. **15¢**

Fresh - Solid **CABBAGE** **3¢** lb.

Fresh - Large Green **CUCUMBERS** **3 FOR 5¢**

U.S. No. 1-B White Rose **POTATOES** 10 Lbs. **19¢**

GARDEN FRESH **GREEN ONIONS** **2** Large Bunches **5¢**

**RADISHES**

Solid, Ripe, Home Grown - Over 5 lbs. per basket **TOMATOES** Basket **39¢**

We Handle 100% Ruchti Baby Beef In Our Meat Department . . .

Yearling **LAMB BREAST** **10¢** lb.

Yearling **LAMB CHOPS** RIB OR LARGE LOIN **29¢** lb.

Yearling **LAMB LEGS** BOSTON STYLE **32¢** lb.

Fresh **Pork Liver** **25¢** lb.

**Pork Hearts**

Meat Specials for Thurs., Fri., and Sat. Only

**Ruchti Baby Beef GROUND BEEF** Ground Fresh On The Hour **35¢** lb.

**Bacon Squares** Cudahy's Gem - Cello Wrapped **19¢** lb.

**SLICED BACON** Wilson's ALL CENTER SLICES **37¢** lb.

**BOILING BEEF** Ruchti Baby Beef LEAN and TENDER **17¢** lb.

*Our Speciality*