

CHURCH PROGRAM

A Columbia Church of the Air program under the auspices of the Christian Science Committee on Publication for Georgia may be heard over KNX at 7 a.m., May 29. The subject of the address will be "For God So Loved the World."

FINALLY

Finally, education alone can conduct us to that enjoyment which is, at once, best in quality and infinite in quantity.

EDUCATION

Every man must educate himself; his books and teachers are but helps; the work is his.

FIRST CHURCH CHRIST SCIENTIST

218th and Manuel - Torrance
SUNDAY MORNING SERVICES AT 11 A.M.
SUNDAY SCHOOL 9:30 A.M. WEDNESDAY
EVENING MEETING AT 8 P.M.
READING ROOM IN CHURCH EDIFICE OPEN
11 A.M. TO 4 P.M. EACH DAY EXCEPT
SUNDAYS AND HOLIDAYS. MON. AND FRI. 7 to 9 P.M.

CHRISTIAN CHURCH

ENGRACIA & ARLINGTON IN TORRANCE
CECILE J. ENGLAND, PASTOR
Church School . . . 9:30
Church Service . . . 10:45
Sermon—"Living for Peace"
PROGRESSIVE, INTELLIGENT RELIGION

ENJOY! OLD-TIME GOSPEL AND SINGING

SUN., 7:30 — EVANGELISTIC SERVICE
9:30 — S.S. 10:45 — WORSHIP 6:30 — YOUTH

TORRANCE FOURSQUARE CHURCH
1207 EL PRADO



BISHOP EUGENE D. YOUNG
Bishop of the local Church of Jesus Christ, Latter Day Saints and direct descendant of the Mormon leader Brigham Young.

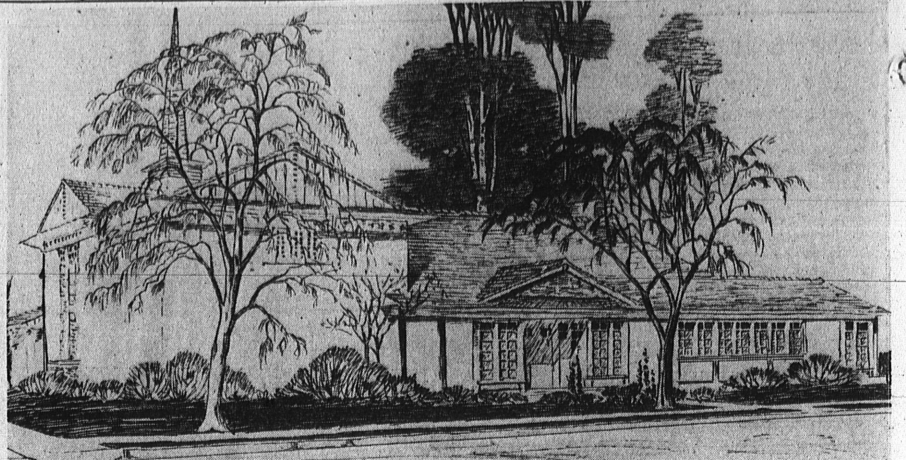
EARLY CHURCH LEADER . . .
Brigham Young, second president of the Church of Jesus Christ, Latter Day Saints, and ancestor of the Bishop of the local church.

A GREAT AIM

The important thing in life is to have a great aim, and to possess aptitude and the perseverance to attain it. —Goethe

CHARACTER

You cannot dream yourself into a character; you must hammer and forge one for yourself. —Froude



NEW EDIFICE . . . With completion due in 1950 the Church of Jesus Christ, Latter Day Saints, announced this week many details of new \$125,000 structure to be built on Cabrillo avenue at 220th street.

Latter Day Saints Announce Plans for \$125,000 Church

Church of Jesus Christ, Latter Day Saints, announced this week that construction will start soon on a new \$125,000 edifice to be built on church property at Cabrillo avenue and 220th street.

Completion of the 600-capacity church in 1950 will be the first "own home" of the local congregation which includes members from Torrance, Gardena, and sections of Long Beach.

Comprising 6332 square feet, the building will include a kitchen, relief society room, chapel, social hall, Bishop's office, and 13 Sunday School class

rooms. The white stucco structure will be furnished with Philippine mahogany pews.

Founded in 1828, the local church includes 612 members whose early home in Torrance was located in the social hall

over the Quality Market on Torrance boulevard. The second story was razed following the earthquake in 1941. At one time the church met in the Woman's Clubhouse and is presently meeting in the Moose Hall.

Members of the building committee include Von Bergen, chairman, David S. Jacobs and Wilford Newland, first and second counsellors respectively.

the flock to Salt Lake City in 1847. Smith founded the religion in 1832 in Manchester County, New York. He was later assassinated in 1899 in New York.

CONGREGATIONAL CHURCH

Since 1888
EMERALD AT
BROADWAY STREETS
REDONDO BEACH
A Center for
Evangelism
C. Kelly Walberg, Minister

Customers' Corner

Honesty and accuracy are "musts" at A&P.

We are proud of the high quality of our foods and the low prices at which we sell them.

But we prize above all else our reputation for fair, honest dealing. And we exert every effort to maintain it.

A&P prices are plainly marked on the goods, shelves or cases. A&P scales are placed where you can read them. A&P cashiers are trained to check your purchases quickly and accurately.

You can help us maintain our strict standards of accuracy if you will let us know should we ever make a mistake in weighing your purchase, or in adding up your bill or in giving you change.

No matter how slight an error might be, please write to:

Customer Relations Department,
A&P Food Stores,
420 Lexington Avenue,
New York 17, N. Y.



3 Day Holiday Ahead!

Whatever Your Plans,
You'll Want to
Stock Up First at A&P!

You'll find outdoor fun much more fun if you pack plenty of picnic foods from your thrifty A&P Super Market. Make it your headquarters for all your favorite treats in eats . . . and give your family and your budget a break.

- | | | | |
|-------------------------|---|---------------|-----------------|
| Marshmallows | Wander Food | 2 12-oz. pgs. | 25¢ |
| Potatoes | Specify, Small Whole—Ideal for Potato Salad | 50-oz. con | 19¢ |
| Chickens | Banquet Whole, Cooked | 4 -lb. con | 1 ⁰⁰ |
| Potato Chips | Crisp English Style Ass. | 1-lb. box | 46¢ |
| Pork & Beans | Ann Page Salad Mustard | 4-oz. jar | 9¢ |

A&P Quality Meats . . .

Armour's Star (Skinned)—The Ham What Am'
HAMS Whole or Full Shank Half **53¢** lb.

OVEN READY
HEN TURKEYS lb. **59¢**

All Sizes—Form, Fresh
CHICKENS Frying lb. **49¢**

Center Cut Chuck
BEEF ROASTS lb. **47¢**

Morrell's Pride, Parchment Wrap Smoked Picnics lb. 41¢	Cudahy's Paritan Link Sausage 1/2-lb. cello 25¢
Wilson's Certified, Smoked Beef Tongues lb. 55¢	Bulk or 1-lb. Balls Pork Sausage lb. 39¢
Fresh, Lean Ground Beef lb. 39¢	Hormel's Dairy Bacon Sliced Bacon lb. 49¢

A&P Fresh Seafoods

Fresh Euroka Salmon lb. 57¢ (Sliced or Piece)	Fresh Northern Halibut lb. 47¢ (Sliced or Piece)
Fresh Fillets Ling Cod lb. 39¢	Fresh Fillets Dover Sole lb. 45¢

Eight O'Clock Iced Coffee—Mild and Mellow 1-lb. bag 40¢	Red Circle Iced Coffee—Rich and Full-Bodied 1-lb. bag 44¢
Bokar Iced Coffee Vigorous and Winy 1-lb. bag 47¢	Served Iced Nectar Tea 1/2-lb. pkg. 27¢

Yukon Cola or Ginger Ale 2 27-oz. bot. 23¢	Kool-Aid 3 pkgs. 10¢
--	------------------------------------

SURF Lever Bros.' New Sudser
1-gal. pkg. . . 29¢
2nd pkg. . . 5¢
Both For **34¢**

RINSO With Solium
Giant Package **57¢**

A&P Dairy Center Values . . .

- | | |
|---|---|
| Whole Milk Cheese
TILLAMOOK lb. 57¢ | Cheese Spread 2 -lb. loaf 79¢ |
| Ched-O-Bit lb. 79¢ | Blue Cheese Fancy lb. 65¢ |
| Mel-O-Bit Sliced Cheese Pimento or American lb. 49¢ | Grade A Butter Quarters lb. 65¢ |
| Fresh Eggs Countryside Small, Grade A dot. cin. 42¢ | |

A&P Delicatessen Buys . . .

- | | |
|---|--|
| Frankfurters Luer or Swift Skinless lb. 51¢ | Liver Sausage Luer or Swift Fresh lb. 37¢ |
| Cotto Salami Luer or Swift lb. 53¢ | Bologna Luer or Swift Large or Small lb. 41¢ |

A&P Fresh Produce . . .

- | | |
|---|---|
| Crisp Heads, Approx. 1 1/2 lbs.
Lettuce 2 9¢ | Fancy Large, Local
Cucumbers each 7¢ |
| Imperial Valley Golden
Sweet Corn 3 ears 19¢ | Big, Juicy
Lemons 1-lb. 13¢ |
| Pippin Apples Average 4-lbs. each 10¢ | Pineapples 7 1/2 lb. 7 1/2¢ |

A&P Super Markets
ADVERTISED ITEMS SUBJECT TO STOCK ON HAND
1330 EL PRADO TORRANCE
Prices Subject to Change after Saturday. Variable Items Are Subject to Tax.

OPEN SUNDAYS PRICES GOOD THURS., FRI., SAT. 2067 Torrance Blvd

SHOP & SAVE AT IDEAL RANCH MARKET

Family-Cut
GREEN BEANS
No. 2 Can
15¢

CRISCO
3-lb. Can
79¢

Our Best
SWEET PICKLES
24-oz. Jar
35¢

Cut-Rite
125-ft. Rolls
WAX PAPER . . . 21¢

Armour's
CORNED BEEF
12-oz. Can
43¢

Durkee's
OLEO
15¢
With the purchase of 1 lb. at 20¢

Surf
SOAP POWDER
2 Boxes for
29¢

Eggs LARGE GRADE A GUARANTEED FRESH **55¢** doz.

Sassy
DOG FOOD
3 for
22¢
Tall Can

Hunt's Preserves
PEACH - PEACH PINEAPPLE
APRICOT - APRICOT PINEAPPLE
BOYSENBERRY BLACKBERRY
LOGANBERRY
1-lb. Jar
2 FOR 29¢

Val Vita
SARDINES
Tall Can
12¢