

## "TELEVISION FACTS"

FACTS YOU SHOULD KNOW IF YOU ARE BUYING OR OWN A TELEVISION SET

by Phil Gibson

### It's A Fact—

more people saw the Rose Bowl game on T. V. than in the bowl. If you were fortunate enough to have seen this game on T. V. you know you had "The best seat in the house." But probably more important is the fact that it meant the inauguration of one more television station for Southern California. The latest arrival is KTTV, channel 11. The Los Angeles Times - Columbia Broadcasting System's new television outlet.

### It's A Fact—

a fact that we now have 5 stations televising nightly programs for your pleasure.

### It's A Fact—

that Gibson-DeVore is the only completely equipped laboratory and service dept. in this area. Gibson-DeVore carry all service guarantees. This means that if your set needs adjusting, maintenance, or service of any kind, the entire job can be handled by Gibson-DeVore's staff of expert television engineers.

Weekly schedules for television broadcasts are available FREE OF CHARGE anytime.

NEW TELEPHONE NUMBER FOR

**Brownies Refrigeration Sales & Service**

Located With GIBSON-DEVORE - Torrance 1568

**Gibson-DeVore HOME APPLIANCE**

Headquarters for Radio and Television  
Phone Tor. 1728  
1875 Carson St.  
Torrance

REV. CLYDE KENNEDY, Glendale—"Modern man with all his accessories is no different from ancient man. He still is bewildered, lost and uncertain as to the future."

Complete Janitor Service  
**HAROLD'S**  
Guaranteed Non-Slip Floor Waxing  
Window Cleaning  
Service Daily and Semi-weekly  
AFL No. 348-BSEIU  
Phone Lomita 930

## City Attorney Back on Job

City Attorney C. Douglas Smith was back at his office this week, following an illness with a cold that confined him to his home most of last week, including the New Year holidays.

## Bank of America

NATIONAL SAVINGS ASSOCIATION  
California's Statewide Bank

Condensed Statement of Condition, December 31, 1948

RESOURCES	
Cash in Vault and in Federal Reserve Bank	\$ 847,290,364.89
Due from Banks	341,974,207.88
<b>TOTAL CASH</b>	<b>\$1,189,264,572.77</b>
United States Government Obligations, direct and fully guaranteed	1,545,280,553.15
State, County, and Municipal Bonds	283,455,131.62
Other Bonds and Securities	109,996,633.92
Stock in Federal Reserve Bank	6,499,400.00
Loans and Discounts	2,807,870,397.91
Accrued Interest and Accounts Receivable	24,974,348.58
Bank Premises, Furniture, Fixtures and Safe Deposit Vaults	42,438,450.40
Other Real Estate Owned	256,058.81
Customers' Liability on Account of Letters of Credit, Acceptances, and Endorsed Bills	63,106,784.24
Other Resources	571,540.33
<b>TOTAL RESOURCES</b>	<b>\$6,072,913,871.73</b>
LIABILITIES	
Capital	\$ 106,646,375.00
Surplus	110,000,000.00
Undivided Profits	62,872,254.99
Reserves	4,666,168.06
<b>TOTAL CAPITAL FUNDS</b>	<b>\$ 284,184,798.05</b>
Reserve for possible Loan Losses	41,505,513.86
Deposits (Demand)	\$3,139,747,378.91
(Savings and Time)	2,499,776,040.24
Liability for Letters of Credit and as Acceptor, Endorser, or Maker on Acceptances and Foreign Bills	65,383,454.65
Reserve for Interest Received in Advance	12,463,320.59
Reserve for Interest, Taxes, etc.	29,833,365.43
<b>TOTAL LIABILITIES</b>	<b>\$6,072,913,871.73</b>

This statement includes figures of the Bank's foreign branches

Main Offices in Two Reserve Cities of California  
SAN FRANCISCO • LOS ANGELES

Foreign branches: London, Manila, Tokyo, Yokohama, Kobe

Branches throughout California

MEMBER FEDERAL DEPOSIT INSURANCE CORPORATION

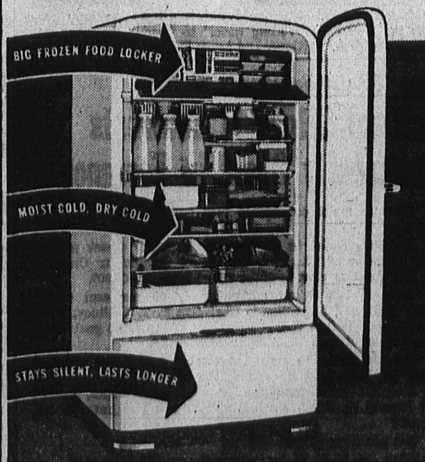


MEMBER FEDERAL RESERVE SYSTEM

## Southern California's 1st Choice

STAYS SILENT  
LASTS LONGER

## SERVEL GAS Refrigerator



Like ALL good news . . . it gets around! There's ONE different, simpler refrigerator that actually guarantees no noise or trouble FOR TEN YEARS . . . Southern California's most wanted refrigerator!

Only Servel has a different, simpler freezing system—without a single moving part! There's no motor, no machinery. Just a tiny gas flame makes ice and cold.

And the new models are beauties. Plenty of room for frozen foods, lots of ice cubes, moist and dry cold for fresh foods, are features you'll enjoy. Come choose your silent Gas Refrigerator today.

YOUR TORRANCE DEALER

**Torrance Plumbing**

CO.

1418 Marcelina — Torrance



PROMOTION DUE — George Stevens, city engineer, who becomes eligible for elevation to the post of City Manager as soon as the Legislature ratifies the city's newest charter amendment.

## City Manager Status Near

(Continued from Page 1)

ager of Culver City and come to Torrance.

Working in close harmony with the City Council and with the support of department heads and other city employees, Stevens has directed an extensive street improvement program covering all sections of the city, which work has been financed principally by State and County gasoline tax monies.

Upon his recommendation the city has purchased several pieces of labor-saving machinery such as a new street sweeper, power mower, traffic-line painting machine, etc.

Additional fire and police protection has been provided, both through the purchase of modern equipment and added personnel.

The financial structure of the city has improved immeasurably under Stevens' guidance. For the first time in the memory of old-time residents sufficient funds have been available so that it was not necessary to borrow money by issuing warrants during the customary lean period.

**R. M. ELECTRIC CO.**  
EMERGENCY ELECTRICIANS  
226 N. Catalina  
Redondo Beach  
Phone FR 3324

## Attendance Record Set by Official

Something of a record for city officials has just been completed by City Clerk A. H. Bartlett.

Last week's council meeting marked the completion of the eighth successive year by Bartlett without missing a single meeting, he discovered on looking over his notes.

## Public Notices

TORRANCE HERALD

NOTICE OF SALE OF REAL PROPERTY AT PUBLIC AUCTION

No. 543,571

In the Superior Court of the State of California, in and for the County of Los Angeles.

BEN CALLEY, Plaintiff, vs. IRVING C. CHESPIN, Defendant.

By virtue of the Interlocutory judgment of partition issued out of the above entitled court, by which judgment I was appointed referee, I am commanded to sell, public auction, all of the following described property, to-wit:

Lot 361 of Original Sunnyvale, as per Map recorded in Book 7, Page 171 of Maps in the office of the County Recorder of the County of Los Angeles, State of California.

Public notice therefore is hereby given that at 12:00 o'clock noon on the 25th day of January, 1949, at the eastern and Spring Street entrance of the Los Angeles County Hall of Justice, in the City of Los Angeles, County of Los Angeles, State of California, pursuant to the said judgment, I will sell the said property at public auction to the highest and best bidder for cash, lawful money of the United States of America, subject to confirmation by the said Superior Court. The said property will be sold free and clear of all liens and obligations, except current taxes, assessments, conditions, covenants, restrictions, reservations, rights and rights of way of record, if any. Title will be delivered through an escrow to be conducted by the Lawyers Title & Guaranty Company. I will pay cost of policy of title insurance showing the vested in purchaser as constructed for. Taxes, rentals and insurance, if any will be prorated as of close of escrow.

Terms of Sale: Ten percent (10%) of the price bid at the time and place of sale to be to me in hand cash and three per cent and the balance to be paid to me upon confirmation of sale by the said Superior Court.

Witness my hand and the seal of said court this 1st day of January, 1949.

Attest: J. E. ALLEN, Clerk of said Court.

Jan. 6, 1949.

Filed for August to December.

New sources of revenue have been added such as re-negotiating the Southern California Edison Company franchise, which effected an increase of over \$10,000 per year to the City. At the same time the municipal tax rate was lowered.

Stevens attributes the improvement of municipal finances to: first, careful preparation of a city budget, and then strict adherence to that budget. He states that funds will be available next year, under present plans for other needed civic betterments, including street signs, better traffic controls and improved lighting at street intersections.

Under Stevens' direction as city engineer a high degree of cooperation between the city building department and builders has been developed, which is bound to attract additional builders to Torrance during 1949, it was emphasized by one large home developer.



NEW DIRECTOR—Henry Creeger, manager of the American Radiator Company's Torrance works, and newly-elected director of the local Chamber of Commerce.

## Charles Jones Named to Head 1949 Chamber

Charles Ver Jones, owner of the Torrance Hardware Company, was elected president of the Torrance Chamber of Commerce at the annual Presidents' Dinner Monday night at the Jonathan Club.

W. T. Tillotson and Reed Parkin were elected vice presidents, and Henry Creeger, manager of the Torrance works of the American Radiator and Standard Sanitary Corporation, was named to the board of directors.

Dean Sears, treasurer and chairman of the nominating committee, presented his committee's recommendations which were adopted by unanimous vote. At conclusion of the election Vice President Parkin presented an ebony gavel with silver engraving to Retiring President Charles T. Rippey, who has headed the Chamber for the last year.

In handing President-elect Jones his "working gavel," Rippey reviewed the accomplishments of the chamber during the last year and spoke of the industrial prospects for the coming year in Torrance. The first new industrial plant to take shape will be the paint plant for the Pittsburgh Plate Glass Company.

## TORRANCE HERALD

1619 GRAMERCY—PHONE 444

Established Jan. 1, 1914

Published Every Thursday

Torrance, Calif.

Grover C. Whyte

Editor-Publisher

E. B. Brown, Business Mgr.

Cliff Johnson, Managing Editor

Adjudicated a Legal Newspaper

By Superior Court, Los Angeles County.

Entered as second class matter, January 30, 1914, at post-office, Torrance, Calif., under Act of March 3, 1879.

Official Newspaper of City of Torrance.

Subscription Rates

Anywhere in Los Angeles County

\$3.50 per year

6 Months, \$2.00; 3 Months, \$1.25

Payable in Advance

Outside Los Angeles County

\$5.00 per year

Payable in Advance

## Business Firms Cautioned About Missing Checks

Local business houses were cautioned again this week by Police Chief John Stroh to be on the lookout for 33 blank checks stolen from Daniel's Cafe, 1625 Cabrillo avenue, last week.

"We feel that efforts will be made to cash some of these checks locally," Stroh said. They begin with the number 1989 and every third numeral thereafter through No. 2085. The checks are drawn on Torrance National Bank, and the name "Daniel's Cafe" is printed on each check. The blank checks, unsigned were torn from a checkbook kept in a desk drawer in the cafe owner's upstairs office.

## Accepts WA Airport Items

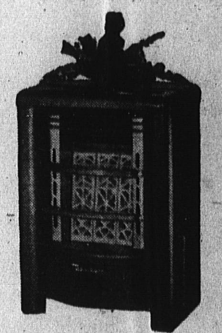
A special meeting of the Torrance City Council was called for Monday afternoon to adopt a resolution accepting title on behalf of the city to approximately a dozen items of war surplus equipment now parked on the municipal airfield.

## HELP WANTED

Driver salesman by independent oil company. For further details phone Torrance 2536 between 8 a.m. and 5 p.m.

## SUMMER WARMTH . . . in Zero Weather!

- It's New
- It's Different
- It's Beautiful
- It's the



## DEARBORN GAS HEATER

CABINET STAYS COOL . . . Top . . . sides . . . back . . . bottom . . . stays as cool as any other piece of furniture. HEATS THE LIVING ZONE, FASTER . . . More economical — chassis design and famous, sturdily built High-Crown burner. PUTS THE HEAT ON THE FLOOR WHERE YOU WANT IT . . . Your old cold floor, problems disappear . . . and so do the sniffles caused by chilly floors.

IT'S CONVENIENT TO LIGHT — ONLY ONE MATCH A SEASON . . . Pilot light is standard equipment on Dearborn . . . Just turn it on and the Dearborn goes to work.

The new Dearborn does so much more . . . for so little money, that it is by far and above the most economical and practical heating unit ever designed for the California home.

**\$22<sup>95</sup>**

YOUR CREDIT IS GOOD AT STAR  
**STAR FURNITURE**  
Sartori at Post — Torrance

**JANUARY**

*Hosiery Scoop!*

**Sale! NYLONS**

- FULL-FASHIONED
- SHEER & PERFECT
- NEWEST SHADES
- SIZES 8 1/2 TO 10 1/2

**19 PAIR**

**BLOUSES**

**REGULAR 2.98 & 3.98 VALUES! 190**

(some slightly irregular)

**MODE O' DAY**

Mode O' Day—Corner Sartori and Post  
LELA MAE SMITH, Prop.

**Drastic Reductions During Our January Clearance**

Thurs., Fri., Sat., Jan. 6th, 7th, 8th

COME EARLY FOR THE BEST CHOICE OF

**DRESSES**

ACTUAL VALUES OF \$10.95 TO \$26.50

**OUT THEY GO FOR ONLY**

**\$3.95 - \$5.95 - \$7.95 - \$8.95 - \$10.95 - \$12.95**

CREPES . . . GABARDINES . . . JERSEYS . . . SPORT . . . CASUAL and DRESSY STYLES IN ALL SIZES

Junior 9-15 . . . Misses . . . Womens . . . 38-44  
Half Sizes 16 1/2 to 24 1/2

**LA SALLE SHOP** 1316 Sartori Ph. Tor. 2233