

**BUCKLEYS TO VACATION**  
Mr. and Mrs. Loton B. Buckley, 1221 Portola ave., will leave this week for a 14-day vacation, on week of which will be spent with friends at Rock Creek and one week at Crestline. Fishing will be the main sport.

**ENTERTAIN SUNDAY GUESTS**  
Mr. and Mrs. E. E. Clayton, 1020 Crenshaw ave., had as their guests Sunday Mr. and Mrs. R. M. Stipple, of Glendale. Mrs. Stipple attended U. C. L. A. with Mrs. Clayton.

## Wife Wounds Self With Rifle After Beach Argument

Hot weather arguments over a beach trip led to a fake attempt at suicide that almost cost the life of a 17-year-old Torrance wife Sunday, according to Los Angeles police.

The wife is Mrs. Marilyn Charles, 17, of 20210 S. Western ave., who was treated at the Torrance Memorial Hospital for a .22-caliber bullet wound in her left chest.

According to her statement to Det. H. J. Greenwood of the San Pedro Police Station, she had quarreled with her husband Ellsworth, because he would not promise to take her to the beach. She placed a rifle in the window of their trailer, placed the hook over the trigger and, turning to her husband, said, "Look what I'm going to do," at the same time pulling the rifle barrel toward her.

She thought she had the safety catch on, she said.



Named "Miss Heavy Industry" and "Miss Light Industry" for the Southern California Industrial Exposition, which opens Saturday, August 16, at the Pan-Pacific Auditorium in Los Angeles, are six-foot Dorothy Ford and five-foot Jan Ford (no relation). They will greet more than 200,000 spectators who are expected to visit the Exposition during its nine-day run. Theme of the show is "Atomic Energy in Peacetime."

## Airport Lawsuit Plaintiffs Not In CAP, Says Ryan

(Continued from page 1-A)

liminary efforts to acquire the field on a lease. The original plan, he said, was that the money be repaid the Lomita business men from operating profits of the field, if any.

Gardiner, Mosher, Stanton and others entered the transaction as trustees, it was said, to finance a commercial operation at the airport participated in by members of the C.A.P., but the whole plan collapsed when Torrance was given a right-of-entry to the airport and the Third group ordered inactivated.

## TWO MEN INJURED IN SEPULVEDA AS CAR OVERTURNS

Two men received minor injuries Tuesday night when the car in which they were riding swerved out of control and overturned on Sepulveda blvd. near Ocean ave.

Robert C. Salters, 309 Torrance blvd., Redondo Beach, driver of the car, and Herbert A. Albright, 548 Via del Monte, Palos Verdes, a passenger, told police they swerved their automobile to avoid another and lost control when they hit a soft shoulder of the road and turned over.

Both were taken to the Harbor General hospital where they received emergency treatment and were released.

## Low Flying Of Planes Hit In County Action

Action was taken Tuesday by the Board of Supervisors to prevent any recurrence of the accident which occurred at Ladera Park in which several people were killed and injured.

County Counsel was instructed to acquaint the Board with the necessary procedure to follow to stop low-flying and stunt flying by airplanes, according to announcement by Chairman of the Board Raymond V. Darby.

Chairman Darby, who brought up the question of stronger laws against low flying by planes wherever crowds gather, said that while the policy suggested by Sheriff Biscailuz of registering out-going and incoming planes and pilots would immediately place blame in case of accident, it would not regulate dangerous or careless flying.

Darby also pointed out that action must be taken at once because of the tendency cited by the Sheriff, of private plane owners to disregard known safety measure.

## Superintendent Hull Asks Change In State School Support Allocation

"Modern times, modern education and modern needs for funds do not permit the use of an antiquated method of determining educational needs based upon where children were a year ago," wrote Superintendent J. Henrich Hull in a letter last week to Frank Wright, assistant superintendent of Public Instruction in the State of California.

Calling for an amendment to the State Education Code, Superintendent Hull said state school support should be based on attendance figures for each month and thus current attendance figures would show the amount of state support which might be expected.

Under the existing law, the letter pointed out, a heavy burden is placed on newly formed school districts which, as in the case of Torrance, often requires special taxation to operate the first year. Despite the fact that the people of the school districts have already paid for school furniture and equipment through previous taxation, according to the law such so-called "personal property" remains

with the Board of Education which originally purchased it.

Superintendent Hull suggests that the Education Code be changed to read, "the entire building and contents shall remain intact for the use of the people of the district."

He further states that any gains in effectiveness made through a "money following child" arrangement will fully compensate for the effort needed to bring the change.

In conclusion, Superintendent Hull points out that "school boundary changes will continue to be in growing populated areas that need immediate funds for current expenses the first year. State aid to school districts should take this matter into consideration."

## ANCIENT POKER

The card game poker is, in principle, almost as ancient as playing cards themselves, according to the Encyclopaedia Britannica, but its name and the present form of the game originated in the U. S. early in the 19th century.

## AUTOMOBILE — TRUCK — FIRE Standard Form Policies—AT LOW COST



Compare Our Rates Before You Buy  
**HOWARD REALTY CO.**  
2091 TORRANCE BLVD.  
Phone Torrance 983-1316  
Prompt, Personal Claims Service

—Continued One More Week!  
—Further Reductions!

## GOING OUT OF BUSINESS SALE

—Nothing Reserved!  
—Everything Goes!

Your Choice of All Suits, Coats, Blouses, Sweaters, Handbags, Lingerie, etc. Many Large Sizes Available.

FIXTURES FOR SALE

## CHARLSTON'S

1312 Sartori — Torrance

## DRUNK DRIVING SUSPECT AWAITS HEARING FRIDAY

Charged with drunk driving, Henry Ascencio, 20850 Hawthorne blvd., has been released on \$150 bail pending a hearing Friday morning in Torrance City Court.

**THE 90TH DIVISION**  
The 90th U. S. Division will hold its 1947 reunion in Oklahoma City, Okla., Nov. 7 to 9.

TORRANCE HERALD

August 14, 1947

5-A

## KANSAS LARGEST WHEAT PRODUCER

For the year 1944 the state of Kansas led all other states of the Union in the production of wheat, with North Dakota second and Oklahoma third.

## TOKYO PHOTOGRAPHED

The entire city of Tokyo and environs was reproduced and photographed in Hollywood in World War II so that American aviators would more easily recognize the enemy target.

## MOTOROLA AUTO-RADIOS

We Now Have a Full Line of Motorola Auto Radios; Four Different Models To Choose From

**WESTERN AUTO SUPPLY CO.**  
1323 SARTORI ST. TORRANCE

## Tid-Bits A La Carte

Personally, these hot days we've been having don't seem to affect our appetite any.

So little, in fact, that we have been eating even more than usual with the inevitable result.

But, then, its better to shake than rattle, we always say.

You can hardly blame anyone for wanting to eat one of our chef's cold, colorful fruit plates, for instance:

All sorts of choice fruits arranged on crisp leaves of romaine with cottage cheese. A work of art, no less, and wonderfully effective as a cooling agent.

If you don't care particularly for fruit we have cold meat plates, too. Served with our own special potato salad and red, ripe tomatoes.

And, if you are a ham or turkey fan, we have plenty of both, seven days a week.

We hope we are not giving the impression that we only serve cold plates and salads here at Vurp's, because we open up at 6 every morning with hot cereals and go on from there.

Ham and eggs and wheat cakes and French toast and that friendly cup of coffee to start the day singing.

In a hurry, believe us. Any how, hot or cold, morning, afternoon or nite, our big comfortable booths make an ideal meeting place for you and your friends.

We'll be looking for you.

—Charlie

## Four Bungalows To Be Moved To Perry School

Torrance City School district will be permitted to place two bungalows at Perry school on mudsills instead of cement foundations, as a result of action of the City Council Tuesday night in waiving building code regulations.

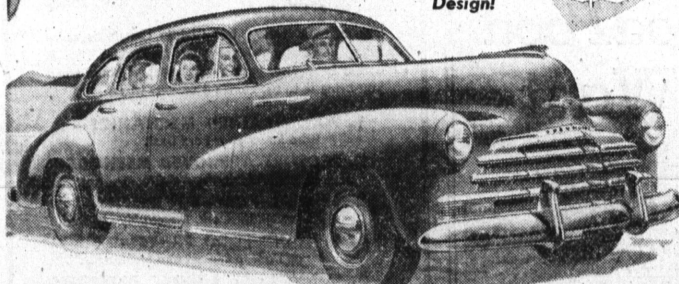
The schools will move two bungalows from Torrance elementary school to Perry in addition to the two structures which Los Angeles will return from Gardena in accordance with a recent court order granting title to all bungalows on Torrance grounds to the local school district. Perry will need the four bungalows in addition to its present buildings to care for the increased enrollment in that area. The Board of Education is preparing to blacktop a portion of the Perry playground, it was said.

## PEDESTRIANS CAN HELP

Two out of every five persons killed in traffic accidents and one out of four of those injured are pedestrians. Pedestrians can help reduce this rate by keeping their heads up, their eyes open and their minds alert, whenever they are walking near or through traffic.

## You can't match the "heart" of BIG-CAR QUALITY AT LOWEST COST

World's Champion Valve-in-Head Design!



The new Chevrolet is the lowest-priced motor car with a Valve-in-Head Engine—the type of car engine which holds all records for efficiency—for giving maximum power from every ounce of fuel. Moreover, Chevrolet's Valve-in-Head Engine is the "champion of champions" on all these counts: (1) Valve-in-Head performance

at lowest prices; (2) billions of miles of service to owners; and (3) number of owners served. In fact, this sturdy Chevrolet Valve-in-Head Engine has delivered more miles, for more owners, over a longer period, than any other automotive engine built today, regardless of type, size or price!

You can't match Chevrolet's BIG-CAR COMFORT at lowest cost, either—the outstanding comfort of its Knee-Action Gliding Ride—for this, too, is exclusive to Chevrolet in its price range.

Be wise! Keep your present car in good running condition by bringing it to us for skilled service, now and at regular intervals, until you secure delivery of your new Chevrolet. Come in—today!

## CHEVROLET

PAUL'S CHEVROLET  
(Temporary Entrance 1635 Border)

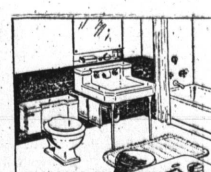
1640 Cabrillo, Torrance

Phone 617

## It's Torrance Hardware . . .

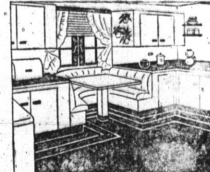


DRESS UP YOUR KITCHEN AND BATHROOM WITH



**CHROME Metal Strip**

We Have All Kinds !! HURRY !!



## Another Shipment of Those Good CURTAIN STRETCHERS Just Came In

## Have Fun at Home Making Your Own ICECREAM . . . Yes —

AND IT'S JUST THE THING FOR THOSE GET-TO-GETHERS . . . ACT FAST, FOR WE JUST HAVE A FEW.



2 Qt. — 6 Qt. — 8 Qt.

## WHITE MOUNTAIN ICE CREAM FREEZERS

Limited Number UNIVERSAL FOOD CHOPPERS REALLY GOOD ONES

## 3/8 in. RESINITE SUPER HOSE

IN YELLOW AND GREEN COLORS

Unconditionally Guaranteed — You Must Be Satisfied

25 feet \$6.45 50 feet \$11.95

## Special Carpet Sweepers

REG. \$9.00 NOW \$6.75

PORTABLE BAR-B-QUE \$7.35 Reg. \$10.00

2 CUP SHAKER FLOUR SIFTER

The Best for Less

## Torrance Hardware

CHAS. V. JONES, Owner

1515 Cabrillo — Torrance — Phone 1480