

INDUSTRY SALUTED BY CITY AS NEW PLANTS PREPARE TO OFFER 1,500 NEW JOBS HERE

With leaders of several new industries bringing upwards of 1,500 new jobs to Torrance present as guests of honor, nearly 400 business, civic and professional leaders of Torrance, with their wives, gathered in the Civic auditorium Monday night in a gigantic and colorful "Salute to Industry."

The affair marked the annual banquet of the Torrance Chamber of Commerce, which sponsored the salute, and it was keynoted by remarks from heads of several of the larger Torrance corporations which tabbed this city the "white spot" of the industrial southwest.

Praise was sung for the favorable local tax structure, for the vast available home areas soon to be developed, for the new school setup, which ultimately will lower school taxes, for the churches, homes, commercial center and the favorable labor situation in the community.

With Reed H. Parkin, president of the Chamber, in the role of master of ceremonies, the meeting opened with a salute to the flag led by Councilman W. H. Tolson, followed by invocation by the Rev. Paul M. Wheeler.

Following the roll call of Torrance industry, represented in table reservations in the vast auditorium, "salutes" were heard from D. S. Faulkner, vice president, the National Supply Company; Henry Creeger, manager, Torrance pottery, American Radiator and Standard Sanitary Corporation, the new industry which will employ nearly 700 men and women; Edward S. Christiansen, president, Bates Expanded Steel Corporation, who flew here from Chicago Monday to tell of the plans for his plant, which will employ approximately 250 persons; W. T. Tillotson, American Rock Wool Corporation, another new industry here; L. A. Harvey, Harvey Machine Company, which recently started operations in the former Bohn Aluminum Company's government-owned building on 190th and Western ave.; Gilbert Woodhill, of the Anderson-Carlson Company, new industry which is occupying the Plancor building used by National Supply during the war; C. S. Beesemyer, vice president of General Petroleum Corp. and president of the Los Angeles Chamber of Commerce; Ray Pavey, of the Reconstruction Finance Corp.; E. R. Doak, president of the Doak Aircraft Co., Inc., and Ed J. Duke, manager of sales for American Standard in Southern California.

Other industries represented were International Derrick & Equipment Co., Joshua Hendy Works, Columbia Steel Co., Pacific Electric Co., Waale-Campbell Co. & Smith, Inc., Standard Oil Company and Plastic Company of America.

Principal speaker of the evening was Carl B. Wirsching, City Manager of Long Beach. Faulkner's remarks, together with the annual report of President Parkin, are included in other articles in this edition.

Directors of the Torrance Chamber were introduced. They

(Continued on Page 4-A)

Red Cross Drive Is 80 Percent Of \$6,000 Quota

Torrance residents have the balance of this month to meet the annual American Red Cross fund drive quota, \$6,000 for 1947, according to Dean L. Sears, chairman of the fund raising campaign.

Figures of the drive up to last night show that 80 percent of the quota has been pledged. The contributions to date are \$4,784.89. Geographic collections are \$913.72 and industrial and commercial contributions total \$3,811.17.

Torrance is somewhat behind many communities in reaching the required goal, Chairman Sears said. "We must complete the campaign by Monday, March 31."

Chairman Sears and Mrs. Helen Miller, branch Red Cross chairman, issued an appeal for additional workers in the residential areas to expedite the collection of all funds within the allotted time.

"Torrance has a good record for fund drives, and we cannot let it fall at a time when the work of the American Red Cross is of such great importance," Sears declared.

Restrictions On Removal Of Trees Asked

Those trees that God made to beautify Torrance and provide shade for its streets will not be removed in the future except when extreme necessity is shown, and then at a cost to the person asking the removal, if City Engineer G. M. Jain has his way.

He asked the City Council Tuesday night to enact a policy which will make it necessary to show that the tree is an absolute detriment to property or is diseased, before ordering removal of any tree. He requested that a charge be made against the property owner requesting the removal, contending that one crew of men is spending nearly all its time taking out trees. "The situation is getting serious," Jain said. "We grant a request of one person to take out a tree, then the next one, and the next and so on down the street. We'll have no trees if we maintain the present policy."

Land Use Law Test Seen In Finch Arrest

The right of A. W. Finch to operate a garage at the corner of El Prado and Carson st. will be strongly defended, it was revealed this week as counsel for both the oil company holding the master lease and Finch prepared to go to court.

Finch was arrested for violation of the Land Use ordinance on complaint of the City Planning Commission which had denied a variance to permit operation of the automobile maintenance garage there.

Finch alleges that since the garage has been operating at the location off and on for 20 years, and since there has been a gasoline service station there all these years, the city is stopped from preventing his operations.

It is expected that the case, which will go into court here March 28, will go to higher courts to test the land use ordinance in the question of the "spot" zoning on Carson st.

Rodeo Group's Request For Park Held Up

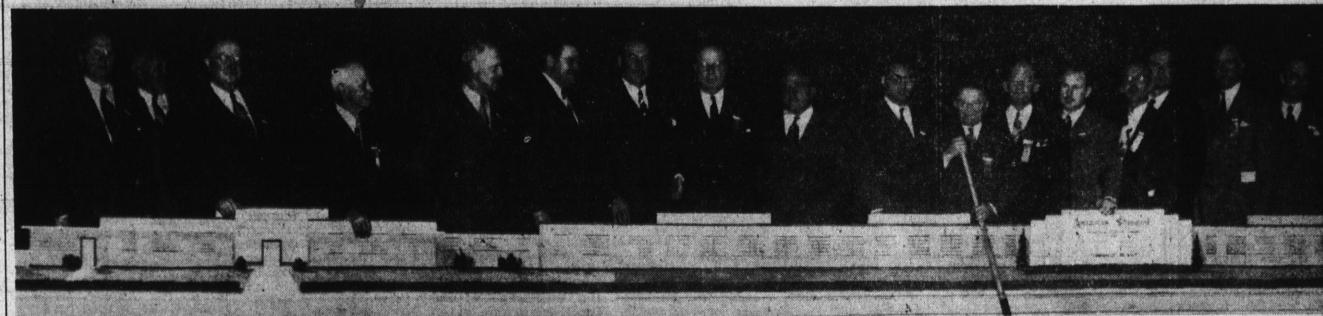
The petition of H. C. Callahan, of the Torrance Rodeo association, to hold a rodeo in the city ball park on July 4, was held up by the City Council Tuesday night pending the working out of a deal between the rodeo group and the American Legion post here for concessions.

Councilman C. M. Gilbert had moved that the permit to use the park be granted when Councilman G. V. Fowell brought up the question of the American Legion's concession rights, and it was held up until it can be shown that the agreement has been reached.

Members of the first Torrance City Board of Education, elected on March 18, are pictured above in the chambers of John A. Shidler, city judge, after they were sworn into office by the judge. Left to right, they are Dr. Howard A. Wood, president of the board, Mrs. Evelyn L. Carr, secretary, Carl D. Steele, signing his affidavit, Mrs. Grace W. Wright, vice president and George P. Thatcher, (Torrance Herald photo).

TORRANCE HERALD

ESTABLISHED 1914 . . . THREE SECTIONS . . . 24 PAGES
TORRANCE, CALIFORNIA, THURSDAY, MARCH 27, 1947
33rd YEAR—No. 13
12
5 CENTS



'SALUTE TO INDUSTRY' MARKS CHAMBER BANQUET . . . In the presence of more than 400 civic, professional and business leaders of Torrance, Monday night in the Civic Auditorium, new industries which will bring more than 1,500 jobs to this community were hailed at the annual Torrance Chamber of Commerce banquet. Upper picture shows the lighted model of American Radiator

Parkin Urges Manager Form Of City Government In Saluting Industries

Urging immediate steps on the part of the City of Torrance to adopt the City Manager form of government and pledging the support of the Torrance Chamber of Commerce to industrial and home expansion, and development of the finest school system in California, Reed H. Parkin, president of the Chamber of Commerce, presided over the "Salute to Industries" program.

In telling of the aims of the chamber toward the program of Torrance, he said: "At the planning and organization meeting held in January of 1946 the officers and directors of your Chamber of Commerce analyzed the civic and business problems confronting our community. After considerable thought and discussion your directors decided to exert every possible effort to assist in solving the following problems:

"I—Full scale employment in Torrance for residents of our community. This objective demanded the accomplishment of two major undertakings: (1) The acquiring of new and varied industries to supplement those then in operation. (2) The construction of homes for many of those living here under crowded conditions, and for those who wished to live and work here.

"II. The acquisition by the City of Torrance of its school system, in order that the city might have the right of providing the finest elementary and secondary schools in California for its students.

"At this time it is my happy privilege to report to you that your Chamber has supported in act and deed the Charter Committee in its efforts to regain for Torrance the administration

of its own education system. Not only has it supported the Charter Committee in the past, but it wishes to go on record as pledging itself to work unflinchingly with our newly elected Board of Education that Torrance may have an unsurpassed educational system. Torrance has ample funds for education, and nothing but the best will meet our requirements.

"Ideal Situation "As you have seen tonight, during the past year Torrance has attracted many fine new industries. Torrance is in a strategic location, served by all

(Continued on Page 6-A)

DR. WOOD NAMED PRESIDENT OF BOARD OF EDUCATION AS ORGANIZATION TAKES PLACE

Dr. Howard A. Wood was elected president of the first Torrance City Board of Education yesterday as the initial order of business of the new board as the members assumed office.

Mrs. Grace W. Wright was elected vice president and Mrs. Evelyn L. Carr, secretary.

Other members of the Torrance City Board of Education who were seated yesterday are Carl D. Steele and George P. Thatcher.

All were elected on March 18. They were sworn into office yesterday at noon by City Judge John A. Shidler in a short informal ceremony witnessed by Dr. C. C. Carpenter, assistant county superintendent of schools, City Clerk A. H. Bartlett and others.

Guests of a group of civic leaders at a luncheon at Allens following their installation into office, the new Board of Education immediately met to organize.

Upon his unanimous election as president of the board, Dr. Wood declared that "I do appreciate this honor and will try to make a good president. We all realize the great responsibility ahead of us, and I am happy with the harmony evidenced by this Board of Education at the several informal conferences which we have held during the past week. We have promised the people and children of Torrance the finest school system in California, and now we launch upon our task to fulfill this promise."

Mrs. Wright's election as vice president, likewise, was unanimous as was that of Mrs. Carr as secretary.

The officers will serve until the annual reorganization meeting of July, 1948.

Early Industrial Development Of Torrance Told By D. S. Faulkner

Leading the speakers in their salute to the new industries of Torrance was D. S. Faulkner, vice president, the National Supply Company which, as the Union Tool Company, was one of the first factories which went to make up the original Torrance city and manufacturing area.

Tracing the history of Torrance industry, he said: "I have made a search of the early minutes of the directors' meetings of Union Tool Company which, as most of you know, was the predecessor of the National Supply Company, and find that on June 5, 1911, a letter was written Union Tool Company stating that the Dominguez Land Company had purchased from the Dominguez estate, a certain portion of the Dominguez Ranch and Dominguez Water Co., and were interested in developing this property as an industrial and residential community.

"Union Tool Company then located in one of the congested districts of Los Angeles and looking for a plant site where future expansion would be possible, were given the privilege of purchasing 26 per cent of the capital stock of Dominguez Land Company upon the condition that they move their Los Angeles plant to the Dominguez Land Company's new tract and have same in operation within 18 months from July 1, 1911.

"It is our understanding that a similar proposition was made to Llewellyn Iron Works, whose principal place of business was also located in Los Angeles at that time.

"Pacific Electric Railway Union Tool Company board in September 1911, the proposition was accepted subject to certain qualifications, one of which was that the Pacific Electric Railway would eventually locate their repair shops in Torrance.

"Both the United States and Goodyear synthetic rubber plants went off production completely this week as a result of the strike in the Dow styrene plant and the closing down of the Dow steam plant.

It was pointed out that if the shutdowns continued for any length of time, it is probable that more plants in the area may be forced to close, including the Shell Chemical Co., Southern California Gas and the El Segundo Standard Oil plants.

(Continued on Page 5-A)

Water Line Bids Less Than Half Of Estimates

Construction costs for the installation of the pipeline to carry water from the Metropolitan Water District supply in Lomita to Waleria, will be about one-half the cost estimated by engineers, it was revealed Tuesday night at the meeting of the City Council.

When bids were opened on the cost of laying about 16,000 feet of 12 and 10-inch line along Pacific Coast highway from the Lomita M.W.D. line to Madison ave., Waleria, the Pacific Pipe Line Construction Company offered an estimate of \$11,950 on the over-all bid. Additional construction for 12-inch mains was estimated at 80 cents a foot and for 10 inch at 70 cents. The district would furnish the material in each case.

Engineers had estimated that the cost of the line to carry Colorado river water from the Metropolitan mains to Waleria would be from \$25,000 to \$28,000. Other bidders estimated the cost at a great deal more, however, the high estimate being from the Hood Construction Co. of \$40,178.40. They offered the additional construction at \$3.00 for 12-inch mains and \$2.00 for 10-inch mains.

Other estimates given the Council and referred to Taylor & Taylor, contract engineers, City Engineer G. M. Jain and Water Superintendent W. H. Stanger are:

Macco-Robertson Co., \$16,725 on the overall construction, with \$1.04 a foot for 12-inch additions and \$1.04 for 10-inch additions.

(Continued on Page 7-A)

Predict Early Settlement In Chemical Strike

There is reasonable belief that the strike which has closed the four synthetic rubber plants in Torrance will be settled at once, according to the industrial relations department of Dow Chemical Company.

The Torrance Herald was told last night that all of the offers and counter-offers which have been made have led to a conference today between company representatives and A. R. Kinsey, International Oil Workers representative, which promises to bring an end to the strike.

Workers at Dow had asked that they be considered on the oil workers pay scale, and were seeking a 20.2 cents per hour raise to approximately \$1.60 an hour average. The company has contended that it is a chemical plant and not an oil refinery, and as such the workers should be paid under the chemical scale.

Both the United States and Goodyear synthetic rubber plants went off production completely this week as a result of the strike in the Dow styrene plant and the closing down of the Dow steam plant.

It was pointed out that if the shutdowns continued for any length of time, it is probable that more plants in the area may be forced to close, including the Shell Chemical Co., Southern California Gas and the El Segundo Standard Oil plants.

(Continued on Page 5-A)

Schools Close Next Week For Easter Vacation

A week's respite from the toils of the school room are in prospect for Torrance children with the coming of Easter vacation.

Starting upon closing of the day's classes Friday afternoon, the welcome vacation will continue until classes are resumed on Monday, April 7, the day after Easter.