

We should not ask who is the most learned, but who is the best learned. —Montaigne

Electric Sewer ROOTING MACHINE
H. E. ARMSTRONG
PLUMBING & APPLIANCES
2030 Pacific Coast Highway
Phone Lomita 245

NOW JUST PHONE 802
For Guaranteed-Expert

Washing Machine Radio Refrigerator Repair Service

DeVORE ELECTRIC
SERVICE DEPARTMENT
1343 EL PRADO TORRANCE

IT'S Onion PLANTING TIME

That's why it is so important that you check with AGGELER & MUSSER first. We have a complete stock of outstanding quality seeds of all the better commercial varieties. A phone call or letter will bring one of our representatives out to your ranch or ask your local dealer. Buy AGGELER & MUSSER seeds from your dealer or call one of our Branch Stores.

AGGELER & MUSSER SEED CO.
652 MATCO STREET - LOS ANGELES, 21 CALIF.
Office & Warehouse - LOS ANGELES 21, CALIF.
Branches: JUANES, SANTA MARIA, SAN BRUNO, VISALIA, BRAWLEY, EL MONTE
GARDENA • 924 W. GARDENA BLVD. • MENLO 42555

LIVING CHRISTMAS TREES
BEAUTIFUL COMPACT CEDRUS DEODARA
They will make a beautiful tree this year and for years to come!
SELECT YOUR TREE NOW!

Give Live Plants or Flowering Bulbs for CHRISTMAS GIFTS
What Else Would Be Cherished Quite So Much as a Beautiful
CAMELLIA - or Perhaps a GARDENIA
FERN - PALM or FLOWERING POTTED PLANT
Our Selection is Most Complete
Open 8 a.m. to 6 p.m. Daily - Closed Every Tuesday

MERRICK'S AMERICAN NURSERY
formerly the ABC Nursery
1400 Redondo Beach Blvd.
Gardena - Menlo 4-1022



Hard work demands good oil!

On the toughest jobs, Standard's RPM Heavy Duty Motor Oil will keep your tractor or heavy truck engine humming. Special, patented compounds, blended with the selected base oil of RPM Heavy Duty prevent rings from sticking and keeps oil passages open. Because of war demands, it's not sold for cars or trucks under 1/4 ton.

C. B. Mitchell S. Davis
Cabrillo At Carson 2074 Lomita Blvd.
Phone 765 Lomita, Calif.

Your local representative for
STANDARD OF CALIFORNIA

3676 JURORS SUMMONED
County Clerk J. Frank Moroney reported today a total of 3676 jurors were summoned for service in the Los Angeles County Superior Court last year, of whom 2140 were accepted for duty.

FRANCHISE REVENUES
Los Angeles county collected a total of franchise revenues of \$208,208.68 during the past year, according to a report made public today by Supervisor John Anson Ford.

Service men's stationery? Call Torrance 444 or 443.

Dedication Of Beaches Of California As Living War Memorials Is Urged

Dedication of California's beaches as living war memorials to the State's fallen heroes was suggested today by the California Shoreline Planning Association, Inc.

The proposal was in accord with the resolution by the 1945 State Legislature which recommended that "when war memorials are built to honor those who fought the war, they shall be primarily living war memorials."

In announcing its suggestion, the Shoreline Planning Association pointed to the use of the beaches to win the recent world war, and noted that now California's 1100 miles of shoreline should be made available to the general public, particularly the men and women of the armed forces.

The statement, signed by George P. Larsen, executive secretary, calling attention to the public's inherent right to the beaches, and asked that the beaches be used as places where the ill and the wounded may be rehabilitated.

"What could be of greater satisfaction to any person than to now make a public gift of a beach area for the benefit of mankind for all time?" asked Larsen.

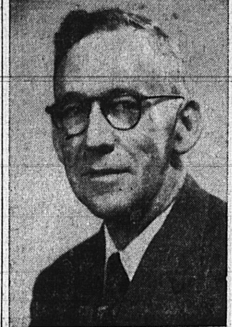
"It would become a living memorial to the donor and a glorious benefit for men, women and children in perpetuity," he said.

Larsen advised that estates could provide funds to acquire and name such beach areas to the memory of a deceased, thus honoring the individual who died, but also such a donation would assure perpetual acknowledgment to the donor. He said that manufacturers and corporations which profited greatly during the war, might well consider granting funds for beach acquisitions as living memorials.

The state and the counties, Larsen said, cannot finance the purchase of all available recreational beaches in all the 15 counties, but he said that the State beach acquisition bill does provide that money raised by

Santa Fe Will Start Long Beach Traffic Dec. 15

In line with a progressive postwar program for greater freight service, the Santa Fe



GEORGE SCOTT
Freight operations on Dec. 15 will begin freight operations to and from the busy city and port area of Long Beach, California, according to an announcement today by C. R. Tucker, general manager of the railroad's Coast Lines.

On that date the company will have in operation a team track and freight depot located between Seventh and Eighth sts. west of Pico, Tucker said.

Coincident with the news of Santa Fe's initial entry into Long Beach was announcement by Freight Traffic Manager Guy L. Goin that George S. Scott has been appointed division freight agent at that point effective Dec. 1.

Scott will make his headquarters in a newly-established division freight office on the fifth floor of the First National Bank Building at 115 Pine ave.

Assistant division freight agent at Los Angeles since 1942, Scott has been with the freight traffic department of the railroad nineteen years. He served in various capacities at San Bernardino and Santa Barbara before transferring to Los Angeles.

He will be assisted in the Long Beach office by A. R. Bireley, traveling freight agent, and N. G. Tyler, chief clerk. Bireley has been traveling freight agent in the Long Beach territory for a number of years and has a wide acquaintance in that area. Tyler transfers from the general freight office, Los Angeles.

The extension of Santa Fe's freight service into Long Beach was authorized by the Interstate Commerce Commission decisions of June 4 and Oct. 2, 1945.

Santa Fe will continue to maintain its passenger traffic office at 117 Pine ave., with J. R. Ramsey as city passenger agent.

Division Heads Named For 1946 Red Cross Drive

Announcement of top leadership to direct the activities of thousands of volunteers participating in the 1946 Los Angeles Red Cross chapter's drive for funds, slated to get under way next March 1—this week was made by David T. Babcock, general chairman.

Named for the second successive year to head the commerce and industry division was Arthur C. Stewart, vice president of Union Oil Co., who will be assisted by Chester A. Rude of the Security-First National bank, and Alfred Wright, attorney.

At the same time, Paul K. Yost, long associated with Red Cross here, was named vice chairman of the 1946 drive and chairman of the geographic department, supervising primarily the "house-to-house" canvassing teams. Vice chairman of the geographic division will be Mrs. Edwin Loeb, A. L. Lathrop and Paul Evans, it was disclosed by Babcock.

Named to serve on the campaign's advisory committee in addition to those named above were:

Wilton Baruch, William Bidner, Charles E. Driver, Aubrey Harwood, Mrs. Lyman Henry Johnson, Vincent P. Maher, Gurney E. Newlin, Mrs. Albert Ralphs, Dan W. Rosencrans, W. B. Ross, William T. Sesson, Jr., Don H. Sheets, Mrs. Beatrice Weber, Olin Welbourn III and Mrs. H. B. K. Willis.

Corporation section leaders named by Stewart include:

Francis Moulton of R. H. Moulton and Co., financial; Clarence S. Beesmyer of General Petroleum Corp., petroleum; Stewart K. Widdess of J. W. Robinson Co., retail; William A. DeRider of Adel Precision Products Corp., industrial; Ludwig Schiff, retired, manufacturing; Norman R. McKee of Southern Counties Gas Co., public service; Lawrence B. Hale, manufacturers' representative, clothing and textile; Sidney Hoodmaker of Pig'n Whistle Corp., foods and beverages; F. B. Orman of Gladding, McBean and Co., construction, and Winston R. Fuller of Rude and Fuller, general.

True prayer is not asking God for love; it is learning to love, and to include all mankind in one affection.

—Mary Baker Eddy

PHONE LOMITA 242
Lomita Theatre
24233 NARBONNE AVE. - LOMITA
FREE AUTO PARK
NOW PLAYING - ENDS SAT.
JOAN CRAWFORD
"Mildred Pierce"

ROY ROGERS, DALE EVANS
"Man From Oklahoma"

SUN. - MON. - TUES.
DEC. 16-17-18
CONTINUOUS SHOW SUNDAY FROM 1 P.M.
JENNIFER JONES
"Love Letters"

PEGGY RYAN - JON HALL
"Men in Her Diary"

LOOK, KIDNERS! SPECIAL CHILDREN'S MATINEE
THURS. DEC. 20, 1:30 P.M.
BOX OFFICE OPENS 11:30
"Mr. Bug Goes to Town"

FOUR MORE FUNNIES
TWO HOURS OF FUN GALORE

ATTENTION, KIDNERS! DON'T MISS THE BIG ALL FUN SHOW AT THIS THEATRE
FRI. DEC. 15 AT 1:30 P.M.
BOX OFFICE OPENS 12:30
15 FUNNIES
USUAL ADMISSION

GARDENA LIBRARY
The County Board of Supervisors has authorized the signing of a lease which will house a Gardena branch of the county public library. The branch will be located at 1120 Compton blvd., Gardena, and was leased from Mrs. Dorothy June Robertson.

RIGHTS WEEK PROCLAIMED
Bill of Rights Week in California was proclaimed by Gov. Warren for Dec. 9 to 15, the latter date marking the 154th anniversary of the historic document.

Amateur FIGHTS
Night, 8:30 Every Friday
WILMINGTON BOWL
EIGHT 4-ROUND BOUTS
75c - \$1.00 - \$1.50
TAX INCLUDED

GRAND THEATRE
PHONE TORRANCE 249
NOW ENDS SAT.
THIS GREAT SHOW BY POPULAR REQUEST
"THE GRAPES OF WRATH" AND "TOBACCO ROAD"

SUN. MON. TUES.
Show Starts 1 P.M. SUN.
MERLE OBERON and CLAUDE RAINS in
"THIS LOVE OF OURS" CO-HIT
"STRANGE CONFESSION"

STARTS NEXT WED.
"DAKOTA" ALSO
"VOICE OF THE WHISTLER"

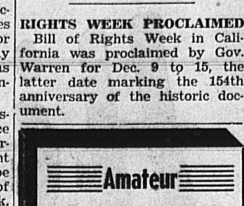
TORRANCE THEATRE
PHONE TORRANCE 132
NOW ENDS SAT.
"BARBARY COAST" ALSO
"WHITE PONGO"

SUN. MON. TUES.
CO-FEATURE
"UP IN MABEL'S ROOM"

EVERY WEDNESDAY AN ALL WESTERN SHOW TWO FEATURES
GARDENA THEATRE
NOW ENDS SAT.
"COWBOY AND LADY" ALSO
"CALL OF THE WILD"

SUN. MON. TUES.
"STATE FAIR" ALSO
"FALCON IN SAN FRANCISCO"

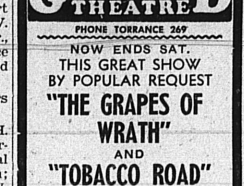
STILL PLENTY OF GIFTS AT Firestone



A Big Thrill for a Little Girl!

19" INCH **BABY DOLL**
4.98
Beautifully dressed right down to the "unmentionables"! A sweet, lovable doll with composition head, arms and legs. She'll look wonderful under the tree on Christmas Eve.

Here's Happiness for the Little Folks



Soft, Cuddly **STUFFED ANIMALS**
1.98 2.98 4.98
Fifteen, twenty and twenty-four inch sizes. Made of soft rich plush. All have moving eyes and big ribbon bows. Little ones adore them!

Specialty for Little Folks

FREE!
Mickey and Donald Comic Book by Walt Disney
Twenty Pages - All New Stories
Printed in Beautiful Full Color
Come in Today for Your Copy

Thirty-Piece **TEA SET 1.98**
Bright shiny plastic. Service for four! Even napkins!

Seven-Inch **Perlene Animals 1.98**
Their saucy eyes move and there's a big and beautiful ribbon bow tied under their cute little chins. Soft and cuddly.

Steam Shovel
A big one-nineteen-inch by fourteen and a half-inch. Metal scoop.

Meet Mickey and Donald

MAGIC SLATE 99c
Lift up the film and the writing disappears like magic! Pencil included.

OPEN EACH EVENING TILL 9 p.m.

Firestone
Marcelina at Cravens - Torrance

Let's Go to the Beautiful . . .



Hawaiian Gardens
Phone TE. 3-3579 6th and Gaffey
SAN PEDRO

World Famous For Fine Foods and COCKTAILS
ENJOY HAWAIIAN MUSIC BY "ALOHA QUARTET"

WARNERS
478 W. 6th St. - SAN PEDRO THEATRE - TE. 2-5400
Too Much in Love and Too Young To Know

THOSE SWEETHEARTS FROM "HOLLYWOOD CANTER" JOAN LESLIE ROBERT HUTTON

WARNERS "Pursuit to Algiers" With BASIL RATHBONE and NIGEL BRUCE

COMPANION FEATURE "PURSUIT TO ALGIERS" With BASIL RATHBONE and NIGEL BRUCE