

Santa Says: You Will Find It At LEVY'S



NOTE:

We have in our store now the finest and largest stock in our history!

Handbags Fitted For Christmas Gift Giving



What woman doesn't like to receive a beautiful handbag as a gift. Here are purses to suit every woman's taste, luxurious bags, in many styles—the perfect complement for the perfect costume.

\$5.95
to
\$14.95

USE LEVY'S
LAY-AWAY

A Gift for Which She Will Truly Thank You



LOVELY NEW FUR TRIMMED COATS

Fine wool materials expertly tailored with gorgeous fur collars in Red Fox, Blue Fox and Silver Fox... all the latest styles... and sizes both miss and matron.

Let us help you make the selection for her.

LOVELY GIFT ROBES

An excellent gift ideal! Wide variety of styles and materials. Just see them!

\$7.95
to \$22.95

\$69.50



Gorgeous FUR COATS

You will have to see this selection to truly appreciate it. Every fur genuine... every style right... and prices at Levy's are... of course... correct! You can buy a fur coat here with confidence.

Smart DRESSES

Party dresses, evening dresses, dates, afternoons... all are here at Levy's in a lovely and complete selection! An appreciated gift idea—or buy for yourself to complete the season's festivities!

14.95 to 29.75

Nationally Advertised-- GIFTS for MEN

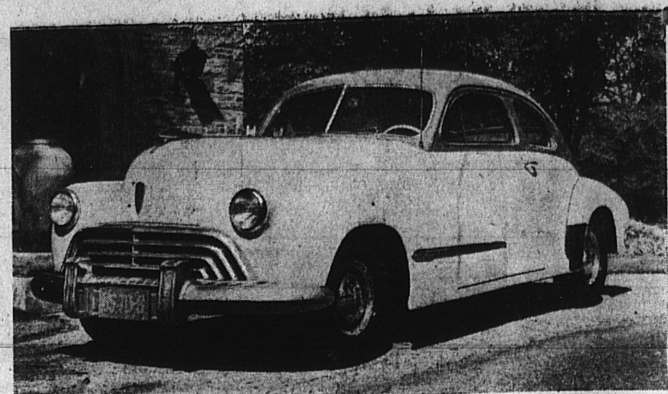
- ARROW TIES..... \$1 to \$1.50
- PHOENIX HOSE..... 50c
- HOLEPROOF SOX..... 45c to \$1
- SWANK ACCESSORIES..... \$1 to \$2.50
- CATALINA SWEATERS..... \$5 to \$7.50
- STETSON HATS..... \$7.50 to \$10
- SPORT SHIRTS..... \$2.50 to \$7.95
- WOOL & PART WOOL SHIRTS..... \$5.95 to \$10.95

Make Your
Selections EARLY—
USE LEVY'S
LAY-AWAY!

SAM LEVY
DEPARTMENT STORE

1307-1313 SARTORI AVE.

TORRANCE



1946 OLDSMOBILE HERE... Oldsmobiles for 1946 are on display in showrooms throughout the country. Here is the "Series Seventy" Club Sedan, one of a dozen new models now reaching the market. Mullin's Service, 1133 Border Ave., is local dealer.

New 1946 Oldsmobile On Display In Torrance; 12 New Smart Models Due

The distinctive new Oldsmobile for 1946, attractively styled and modern to the minute, is now being displayed for the first time in dealer showrooms throughout the country, in Torrance at Mullin's Service, Oldsmobile dealers, at 1133 Border ave.

When peak production has been reached, an even dozen smart new body styles will complete the 1946 offerings. These will offer a wide selection in three series—the "66", "76-78" and "98," on 119-inch, 125-inch and 127-inch wheelbases, respectively.

The "66" Series, in the low-price field, will include the Club Sedan, Four-Door Sedan, Club Coupe, Convertible Coupe and Station Wagon. All are powered with six-cylinder engines. The "76-78" Series in the medium-price range, will offer the Club Sedan, DeLuxe Club Sedan, Four-Door Sedan and DeLuxe Four-Door Sedan. Both six and eight cylinder motors are available in this series. The "98" Series in the medium-price field will offer three body-types—the Club Sedan, Four-Door Sedan and Convertible Coupe—each of which will be powered with Oldsmobile's eight cylinder 110-horsepower engine.

General Motors Hydra-Matic Drive, which affords fully automatic shifting through all four forward speeds and eliminates the clutch pedal, has been extensively improved during the war years and remains one of the most important features of the new cars. Hydra-Matic Drive, of a type identical in principle with that employed in Oldsmobile, underwent rigid Army tests and proved its stamina and durability. By reason of this excellent performance, it was adopted for use in tanks, "alligators," armored cars, trucks, "ducks," and other military vehicles. Hydra-Matic Drive has a war record of which its designers are extremely proud.

Of all the cars produced by Oldsmobile in its 48-year history, the 1946 models are the most colorful, literally and figuratively. With production at the factory constantly increasing, many body styles and options are scheduled to become available at an early date in a wide range of color choices. Options in solid hues include black, greens, reds, ivory, blues, beige and grays. Available in two-tone combinations will be beige-ivory, blues, grays and greens, in addition to many variations of these colors. Every possible owner-preference is being anticipated.

Interiors of the new Oldsmobiles are triumphs of the expert body-builder's art. Skilled Fisher Body craftsmen, using only the finest materials, have created in the new Oldsmobile for 1946 the most appealing interior ensembles ever offered by this Division of General Motors. Beauty, convenience, durability and comfort all are stressed in the var-

ious appointments. Throughout all series of the new Oldsmobiles, car interiors reflect good taste. Upholstery fabrics are fine in quality, long-lasting and wearing. Both front and rear seats are wide, with ample cushioning for passenger comfort. Window areas are large and afford good visibility. Instrument panels group proper dials directly before the driver's eyes, contributing both to convenience and safety.

Many improvements, contributing to longer engine life and smoother and quieter car operation have been incorporated in the new 100-horsepower six-cylinder engines and 110 horsepower eights that drive the 1946 Oldsmobiles. Both now employ electro-hardened aluminum alloy pistons. New type connecting rods likewise are used. They, like the pistons, are light in weight and their life has been greatly increased. Newly designed "Dux" heavy-duty main and connecting rod bearings, which assure maximum bearing life are utilized.

The 1946 engines have new synthetic rubber mountings that are impervious to oil and, for that reason, superior to natural rubber. Every mounting is rigidly tested to assure finest quality. A new higher rating thermostat is provided in the manifold, which raises manifold temperature and assures best possible engine performance with grades of gasoline.

FAMOUS LAST WORDS

"Who does that guy think he is passing with that old rattle-trap. I'll show him!"

Scientific, Fluoroscopic Examination By Modern X-RAY

TELLS WHY
YOU ARE SICK

Includes Special Studies of: Sinuses, Mouth, Nose, Ears, Throat, Glans, Bronchi, Lungs, Heart, Gall Bladder, Stomach, Kidneys, Nervous System, Pelvic Organs, Prostate, Rectum, Blood, Urine, Blood Pressure, Joints, Bony Parts and Feet.

Some of the Conditions We Specialize In:

- Anemia
- Arthritis
- Asthma
- Bronchial Affections
- Colds
- Constipation
- Headaches
- Heart Trouble
- Liver and Gall Bladder
- Kidney Trouble
- High and Low Blood Pressure
- Nervous Conditions
- Paralysis
- Skin Eruptions
- Lumbago
- Sciatica
- Prostate (Male)
- Female Disorders

CONSULTATION
WITHOUT CHARGE

I make no charge for consultation in my office regarding your health problems. Feel free to take advantage of this offer without obligation on your part.

Dr. Milford J. Robinson, D.C.

OFFICE HOURS: 9 A.M. TO 10 P.M.
Upstairs Opposite Discount Self-Service Drug Store
1337 EL PRADO PHONE TORRANCE 367 TORRANCE

THIS SPECIAL FILE TELLS US SO MUCH

About the good insurance does for folks right here in Torrance!
It would actually amaze you to know the number of local people we have presented sizeable checks to cover a multitude of financial losses!
For every risk... we have a low cost policy to protect you.

"WHERE INSURANCE IS NOT A SIDELINE"
**TORRANCE GENERAL
INSURANCE AGENCY**

J. STANLEY KING — A. RUSSELL LUND
1407 Marcelina Phone 1800