

CATHOLIC PARTY
THIS EVENING

Hostesses for this evening's Catholic card party are Mrs. Clayton, Chicoine, Dietlin, Young, Lewellen, Ames, Wilken, Moeller, Moffitt, and Miss Opal Yorker. Everyone is cordially invited. The first door prize will be presented at 8:00 o'clock and games of contract and auction bridge, pinchle and 500 will begin immediately. Refreshments will be served.

MISSIONARY COUNCIL
MEETING PLANNED

The Christian Church Missionary and Council meetings will be held at the church Tuesday, Dec. 4. The Council meeting will be conducted by Mrs. Nelle Phillips, president beginning at 11:00 a. m. Following a noon luncheon, Mrs. C. B. King will preside at the Missionary meeting with Mrs. Emma Horton, as leader.

Navy Base At
Harbor Will
Employ 7000

Designated by the Navy as the major Southern California base, the U. S. Naval Shipyard in Long Beach will employ a minimum of 7000 workers in peacetime, Commander Schuyler F. Heim announced Saturday. The commandant also revealed that activities at Roosevelt Base will be stepped up instead of slackened by the end of the war.

Because of the importance of an adequate transportation system serving both the Navy facilities and the commercial interests on Terminal Island, Commander Heim called a conference of representatives of municipal and state governments for Monday to discuss construction of a new span across Cerritos Channel, linking the island with Long Beach.

The Navy planned to spend \$10,000,000 of Congressional appropriations plus \$4,000,000 from the Public Roads Administration in building the bridge and freeway. However, Secretary Forrestal has disapproved the structure, stating that funds appropriated during the war time cannot be expended for such a proposal in time of peace.

Disapproval does not mean that the project definitely has been abandoned and it might be done as a public works project either by the state or municipalities as well as by the government.

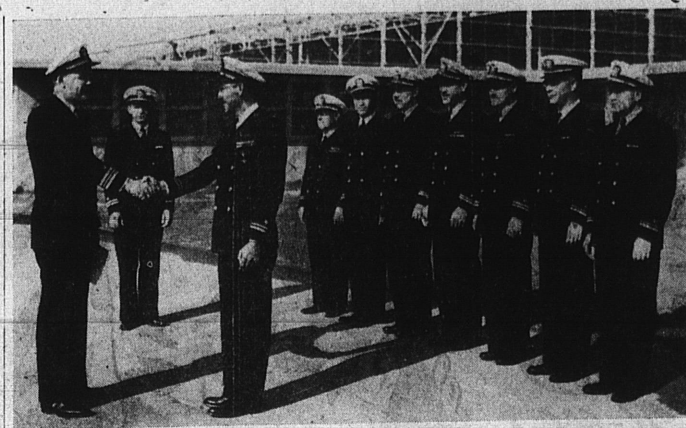
U. S. Sen. William F. Knowland, who will be in Long Beach Friday, on his first visit since his appointment, has assured friends here of his active and helpful interest in the project.

Declaring the Navy has a gigantic investment to protect on Terminal Island because of its many installations there, representatives of Los Angeles County and of the Los Angeles and Long Beach Harbor departments agreed at the meeting to send a committee to Washington to seek reinstatement of the \$13,000,000 freeway and bridge project.

At a closed conference in the office of Commander S. F. Heim, commanding officer of the Naval Operating Base at Terminal Island, the representatives voted to send Supervisor Ray Darby, Arthur Eldridge, manager of the Los Angeles Harbor Department, and W. R. Martin, chairman of the Long Beach Harbor Commission, to Washington.

SPEEDING CHARGED

Nearly one-fourth of all drivers in fatal accidents in 1944 were charged with a speed violation.



CEREMONIES AT NAVY CENTER . . . Two ceremonies marked activities of the past week at the U. S. Navy Material Redistribution Center in Torrance. One was the presentation of a Bronze Star by Lt. Comdr. Frederick E. Drake, Jr., officer in charge, to Lt. (j.g.) H. R. Speece and the other was the inspection by city officials and civic leaders of the plant Monday. Shown above are officers of the plant during the presentation ceremony, left to right, Commander Drake, Lt. Edwin G. Hansen, executive officer; Lieutenant Speece, who is material identification officer; Lt. (j.g.) Harry Moore, outgoing stores officer; Lt. D. A. Plumb, incoming stores officer; Lt. (j.g.) J. T. McKinley, accounting officer; Lt. (j.g.) James G. Evans, material identification officer; Lt. E. S. Hildner, storage officer; Lt. (j.g.) H. A. Wood, assistant storage officer, and Lt. (j.g.) A. R. Todd, labor and transportation officer. (Torrance Herald photo.)

Allen Will
Manage Navy
Cafeteria

Herbert C. Allen, local restaurant man, has signed a contract with the Navy department to operate the cafeteria at the U. S. Navy Material Redistribution Center in Torrance, it was announced this week by Lt. Comdr. Frederick E. Drake Jr., officer in charge of the center.

The cafeteria, part of the big 91-acre plant being built by the Navy to handle, reconstruction and reshaping or surplus, obsolete or damaged Navy material, will be opened in about one week, according to Allen.

The modern cafeteria is designed to accommodate 80 diners at once. It will be open for eight hours a day, serving the some 150 Navy and civilian employees at the base with breakfast, lunch and snacks.

Meanwhile, Allen is putting the finishing touches on his new restaurant, building at 1413 Cravens ave.

He said he will not be able to open the new restaurant until after the first of the year, due to the slowness of delivery of certain equipment.

The new Allen's restaurant will feature a "quick service" counter and a dining room, with seating accommodations for 100 persons.

He said that he will operate both the Navy cafeteria and his restaurant, when it gets into operation.

Child Care
Problems To Be
Discussed

Problems and finances of maintaining state child care centers will be delayed into when the assembly interim committee on education convenes in about two weeks, Assemblyman Julian Beck disclosed.

The committee, which recommended legislation to appropriate funds to run the center at a recent Los Angeles meeting, also requested that a special commission be organized of state and civic officials to study the child care center problem.

Assemblyman Gardner Johnson, Berkeley, chairman of the interim committee, pointed out that such centers would care for children that were abandoned, children whose mothers were their sole support and youngsters who were left in the lone care of their father.

Six Months Wait To Get Possession
Of House Facing New PurchasersLittle Hope
Seen In Lumber
Shortage

Los Angeles County's dire housing shortage bids fair to continue indefinitely, Ray A. Myers, chairman of the Los Angeles Chamber of Commerce Construction Industries Committee, warned today.

"Though the war ended more than three months ago, production of rough lumber and subsequent supplies of finished lumber have actually decreased. It is doubtful if northern logging mills are turning out 25 percent of their normal output," Myers declared.

Almost nonexistent now in this area, Myers continued, are doors, sash, cabinets, trim, hardwood flooring and dozens of other building necessities. Said Myers: "There is no prospect that this critical situation, which has brought construction to a virtual standstill, will be remedied until volume production is attained in these basic industries. Only then can there be any appreciable building activity here."

Myers praised attempts of the Citizens Reconversion Council to locate a construction materials yard held by the government. "But," he said, "I think such measures are of an emergency nature. The only practical and permanent solution I can see is a restoration of full production in the primary construction industries."

Planning Body
Is Formed By
Palos Verdes

Organization of a Palos Verdes Estates Community Planning Commission has been completed with Dr. W. Ralph La Fayette as chairman. Members include Mr. Peter Bartimus, Mrs. E. C. Rechin, Mrs. E. P. Hadley, Henry Thomas and O. C. Field. Ex-officio members are Mayor H. F. B. Roessler; Clifton A. Hix, president of the Rolling Hills Community Association; N. D. Myers, City School Superintendent; and Russell H. Green, Library Board president.

SPEEDING FATAL

A speed violation was reported for one out of every three fatal motor vehicle accidents in 1944.

High Rate Of
Reemployment
Indicated Here

More than half the persons filing claims for unemployment insurance at the Torrance employment office since V-J day have not continued their claims. This indicates a high rate of reemployment in this area.

Approximately 2,500 people now claiming benefits are still a problem to the relatively small staff of the local office, it was reported. This is particularly true on Monday and Tuesday, the days on which most unemployed workers have appeared to register for work, and file claims for benefits. It has been necessary to give definite appointment times, set at 15-hour intervals to give adequate service, and prevent congestion even in the enlarged office space at 1828 Cravens st.

Frederick White, recently appointed unemployment insurance representative of this office, suggests that unemployed persons desiring work register with the United States Employment Service, which is also located in this building. Many jobs are available under certain conditions to workers so registered and actively seeking work until they are suitably re-employed.

White also recommends that unemployed persons desiring information as to job openings, or eligibility conditions for claiming unemployment insurance, apply at this office for concrete advice in this regard. The office is open Monday through Friday from 8:30 a. m. to 5:00 p. m. for employment and unemployment insurance services. The office is also open from 8:30 to 12:00 noon on Saturday for employment service only.

Persons desiring to claim unemployment insurance benefits will find better service if they apply before 3:00 p. m. and during the latter part of the week, rather than on Monday and Tuesday, which are at present, the two busiest days in this office.

CLUB WOMEN PLAN
RUMMAGE SALE

Torrance Woman's Club will sponsor a rummage sale to be held all day at 1307 El Prado, (formerly Kenny's Shoe Repair Shop) Mrs. Myron Russell and Mrs. Chris Jones, co-chairmen, ask that clubwomen and their friends assist by sending in articles for sale as early as possible.

TRAIN ACCIDENTS

Sixty-five per cent of the grade crossing accidents last year involved trains going less than 30 miles an hour or standing still.

Let Us Pay
Your Funeral
Bills

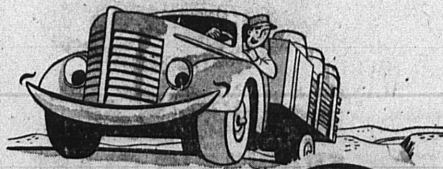
All are eligible to apply for membership in The Homeowners' Life Association, a five million dollar, 20 year old Fraternal Life Insurance Association, licensed to do business in 29 states. In time of need your contract provides cash to pay your funeral bills. Yet you pay only a small amount monthly. One man paid in only \$2.00 but \$400 cash covering all his funeral expenses was paid by The Homeowners. Select your own mortality.

MAIL THIS COUPON TODAY—
Homeowners' Life Association
315 W. 9th St., Los Angeles, Dept. TO
Send me FREE information how I can become a member of The Homeowners.

Name _____
Address _____
City _____

Amazing Fast Relief For
COUGHS

BRONCHIAL IRRITATIONS Due To Colds
A Rare Combination—Compounded from Valuable Canadian Pine Balsam and other soothing healing ingredients—Buckley's Cough Syrup is different from anything you have ever tried—all medication—no syrup.
Buckley's Cough Syrup
1 To Loosen Phlegm
2 To Soothe Raw Membranes
3 To Make Breathing Easier
You get results FAST—you feel the effect INSTANTLY.
Act at once—try Buckley's CANADIAN Mixture today. At first-class drug stores everywhere. Satisfaction guaranteed or money back.
McCOWN'S DISCOUNT—TORRANCE
McCOWN DRUGS—LOMITA

How to keep
trucking along

Right now, when your truck must keep going, RPM Heavy Duty Motor Oil is your best bet! For blended with its selected base oil are special, patented compounds. These prevent ring-sticking... keep oil passages open... make for long, repair-free motor life. (By government directive, RPM Heavy Duty Motor Oil is not available for cars and trucks under 1/2 ton.)

C. B. Mitchell
Cabrillo At Carson
Phone 765

S. Davis
2074 Lomita Blvd.
Lomita, Calif.

Your local representative for
STANDARD OF CALIFORNIA

Twice as popular as
any other beer!!

Yes, Among Westerners...

It's
X-COME



BEST SELLER
EVERY YEAR
SINCE REPEAL!

A. P. CORSARO
Redondo Beach, Calif.

1117 1/2 Steinhart Lane

ICE COVERED ROADS
It takes the average car traveling at 20 miles an hour 101 feet to stop on a road covered with glare ice.

QUICK RELIEF FROM
Symptoms of Distress Arising from
STOMACH ULCERS
DUE TO EXCESS ACID

Free Book Tells of Home Treatment that Must Help or it Will Cost You Nothing
Over two million bottles of the WILLARD THERAPEUTIC have been sold for relief of symptoms of distress arising from Stomach and Duodenal Ulcers due to Excess Acid—Poor Digestion, Sour or Bitter Stomach, Gasiness, Heartburn, Sleeplessness, etc. due to Excess Acid. Sold on 15 days' trial. Ask for "Willard's Message" which fully explains this treatment—Free—

Discount Drug — Torrance
McCown Drug Store — Lomita
Mid-City Drug — Torrance

IMMEDIATE DELIVERIES WITHOUT PRIORITIES
At Your Home Or At Any Job
READY-MIXED CONCRETE

Modern high-discharge ready-mixed concrete trucks, manned by efficient, courteous operators, now available for all types of jobs, large or small. Telephone inquiries solicited. Our office will be glad to help you figure quantity of concrete necessary for your job. For deliveries in the Torrance, Gardena and Harbor areas phone Torrance 1522 or Torrance 1210.

Azusa Rock & Sand Company

Main Office—Azusa, California

Torrance Branch—1347 1/2 208th St.

(P. O. Box 604, Torrance) PHONE TORRANCE 1522 or 1210

Now... for the first time

YOU CAN GIVE YOURSELF A DELUXE

Cold Wave

PERMANENT
AT HOME IN 2 TO 3 HOURS

\$1.25
PLUS 15¢ TAX

COMPLETE WITH CURLERS
AND EVERYTHING YOU NEED

CREME
COLD
WAVE

Now you can give yourself a genuine creme cold wave at home with new TONI. What a difference this creme wave solution makes! New luster... new easy-to-manage softness... a genuine beauty-salon type permanent that combs out into deep-set, longer-lasting waves and curls. Takes just 2 to 3 comfortable hours at home... easy as putting your hair up in curlers! Insist on TONI CREME COLD WAVE 3¢, containing identical ingredients used by beauty salons for cold waves costing as much as \$15.00 and more. Try it. Guaranteed to satisfy or your money back.

Mothers! Give your daughter a TONI COLD WAVE. You'll be thrilled and proud of the result.

McCown

DISCOUNT

Self-Service Drugs

1334 El Prado — Torrance

The Daylights

pacemakers for trains to come

Every day Southern Pacific's luxurious streamliners enjoy enormous "showcase" windows five feet wide, soft foam rubber seats, fluorescent lighting, a low-voiced public address system to announce station stops and points of interest, baggage elevators, complete air-conditioning, smooth gliding motion thanks to ingenious tight-lock couplings between the cars.

The Daylights are among the most popular trains in America and the most beautiful trains in the world.

Aboard these luxurious red and orange streamliners you enjoy enormous "showcase" windows five feet wide, soft foam rubber seats, fluorescent lighting, a low-voiced public address system to announce station stops and points of interest, baggage elevators, complete air-conditioning, smooth gliding motion thanks to ingenious tight-lock couplings between the cars.

Modern ideas such as these, tested in years of daily service on Southern Pacific's Daylights, the Lark, the City of San Francisco and the Sunbeams, gave us a head start in designing the trains to come.



tomorrow... Southern Pacific is planning more streamliners, and will have them on our four major routes as fast as conditions permit. These new trains will be the finest the world has seen. Watch for the new Southern Pacific streamliners. Then it will be more exciting than ever to "try the train."