



**SCHOLARSHIP BANQUET** . . . Members of the California Scholarship Federation from nine schools of Los Angeles county gathered in Torrance civic auditorium last Friday night for the first banquet of its type since the war started. Shown above are the students of Torrance and Narbonne high schools in attendance. They are, seated, left to right, Stella Hansen, N; Shirley Severin, T; Jean Castle, N; Olwyn Richards, T; Jacqueline Stricker, N; Myrna Fossum, T; standing, left to right, Miss Irene Mills, Torrance high sponsor; Bill Jackson, T; Patty Stubble, N; Charles Ringle, T; Josephine Bader, N; Jay Stroh, T; Eileen Drake, N; John Hill, T; Ralph Jakubowski, T; Bill Swain, N; Lois Severin, T; Neal Silence, T; Rose Marie Pickett, T; Philip Limperich, N; Maxine Schildmeyer, N; Merwyn Jarrett, T; Miss Stiff, Narbonne sponsor. (Homer Morgan photo).

## Scholarship Society Members From Nine Schools Gather For Banquet

Reviving the tradition of holding district scholarship meetings in the schools of the area in rotation, the Torrance High School chapter of the California Scholarship Federation held an invitational banquet in the Torrance Civic Auditorium on Friday evening, Nov. 16. Each school in the Area was represented by a group of scholarship students and the faculty sponsor. Special guests were Harold E. Perry, principal of Torrance High School, and Miss Elizabeth F. Parks, girls' vice principal.

The complete society entered into the preparation for the banquet. Miss Lois Severin issued the invitations and assisted in the table decorations. Shirley Severin, Rose Marie Pickett, Polly Robinson, and Olwyn Richards decorated the hall and in-

itiated a get-acquainted game as the guests arrived. Jay Stroh made arrangements for the Civic Auditorium and the serving of the dinner. Bill Jackson carried responsibility for finances. Chas. Ringle and Neal Silence did the climbing for decorating the auditorium with red and gray of Torrance High School, for which Billy Morgan had painted two Torch symbols of the state scholarship organization. Presenting the program was John Hill. Ralph Jakubowski presided at meeting. To open the program, Merwyn Jarrett played a trumpet solo accompanied by Myra Fossum, who also rendered a

## Woodcraft Rangers Going to Stanley Ranch on Friday

Woodcraft Rangers, sponsored in Torrance by the Torrance Lions club, will enjoy a two-day outing this weekend at Stanley Ranch, Rangers camp near Castaic.

The group will be picked up by truck at the City Hall on Friday morning and will return Saturday afternoon at about 4:30 p. m. The boys will take a sack lunch for the first day and enough food for three meals, according to Tom Babbitt, guide of the Torrance tribe. In addition, they will take eating utensils, four warm blankets or sleeping bag and blanket, warm jackets, toilet articles and flashlights.

piano solo. Each school contributed a number to the program.

Other schools present and participating were Venice, San Pedro, Bell, Banning, South Gate, Huntington Park, Narbonne and Gardena.

The evening closed with a round of collecting autographs.

# TORRANCE HERALD

November 22, 1945

Torrance, California

Section C

## Permanent Citizens Committee Forms Here For Recreational Study

Lewis R. Barrett, representing the Welfare Council of Los Angeles, met with a citizens group of people interested in the recreational needs of the community. The group met under the auspices of the Torrance Area Service Center upon call of the center's chairman, the Rev. Paul Moore Wheeler. Present with Barrett was Arthur Chase, recreation director of the city of Los Angeles.

The men are making a recreational needs survey of all the area served by the War Chest. Upon completion of the survey their findings and recommendations will be presented to the local citizens groups. The meeting was an informal

discussion by those in attendance of the present facilities and areas of needed facilities. The local group will contact the various chest agencies and request workers to be assigned to the Torrance area.

The discussion brought out the need for a city ordinance creating an authorized Recreation Commission. A proposed ordinance to be presented to the City Council will be supported. The need for Y. W. C. A. among our girls was stressed. Areas needing recreational facilities and leadership, at present having none, are the Los Angeles shoe string strip, the Fern Avenue School district, and the

portion of the city north of Torrance blvd. between Madrid and Arlington aves.

Upon the motion of the Rev. Ben Lingenfelter, seconded by Mrs. E. G. Spratt, those present organized themselves into a permanent "Citizens Committee" to study and secure the necessary recreational facilities for this portion of the War Chest area. The people present represented churches P.T.A.'s, service clubs, youth groups and parents.

Those present at the meeting were:

Rev. Wheeler, James Brodie, Rev. Lingenfelter, Rev. Clyde E. Ruckman, Mrs. E. G. Spratt, Rev. Ronald J. Menmuir, Mrs. Hillman R. Lee, Don Cooke, Ted Meier, Bernard Lee, Mrs. Clare C. Farrell, Mrs. D. A. Murphy, Miss Mary C. Waddell, O. Hackenson, George P. Thatcher, Judge John Shidler.

# Smart Folks-- Are Doing Their Christmas Shopping Early at-- NATIONAL HOME APPLIANCE

The House of  
Friendly  
Credit

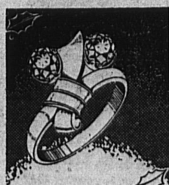
USE NATIONAL  
Lay-Away



## DIAMOND RING VALUE

Here is a truly lovely ring, embodying all the smartness and beauty of higher priced rings. It's 14K gold with sparkling diamond. Splendid craftsmanship.

**\$3750**  
ON TERMS



## COCKTAIL RING

**\$24.50**

Ultramodern gold setting holds two sparkling birthstones. Other styles to choose from.

ON CREDIT



Lovely dresser sets in boudoir chests from

**\$3.95**

Others to \$49.50  
Pay Weekly



**\$9.95**

On Credit Terms  
Gold, engraved cross set with sparkling diamond. With chain.



## SIGNET RINGS

Wide choice of dozens of accepted and unusual styles — all the kind men like.

**\$13.50 to \$85**

## DIAMOND GIFTS FOR WIVES AND SWEETHEARTS



Fascinating bridal ensemble with a fine diamond in each adorable 14K gold ring. Both are perfectly matched. Both at this low price.



Modern charm in a fine diamond engagement ring of 14K natural gold. Gorgeous design.



Rich splendor in this elegant three-diamond engagement ring of 14K gold. Fine quality.

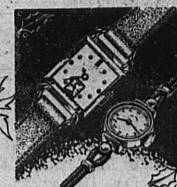


Bridal ensemble composed of two fine modern rings, each with a splendid diamond. 14K gold.



Perfectly matching rings, each set with 3 brilliant diamonds. Each is 14K gold. Lovely.

It's  
NATIONAL  
FIRST for GIFTS  
that LAST



## FAMOUS WATCHES

Come see our fine selection of famous watches . . . all newest models . . . all fine quality, fully guaranteed. Pay just one-third down and the balance on terms. Up to a year to pay.

PAY ON EASY TERMS



## Holiday Gift Glamor!

Lingerie lovelies to lay at her feet! Here are all the enchanting leisure-time hostess fashions, the feminine undercover beauties she adores. Find them at Jane Grey's, the store that tops her shopping list, at prices to keep your gift-busy budget happy.

LARGE SELECTION QUILTED  
SATIN ROBES **\$22.98**

Gowns — Pajamas — Housecoats

# JANE GREY SPORT SHOP

1327 SARTORI — TORRANCE  
NEXT DOOR TO TORRANCE NATIONAL BANK

Friendly Credit  
National Home Appliance Co.

Harry M. Abramson

1317 Sartori

Torrance

Phone 78