

## Colette Nance Pupils Slated For Recital

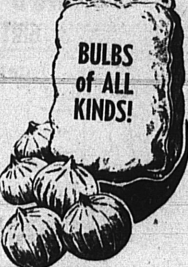
Fifteen pupils of Colette Nance, concert pianist and teacher, will be presented in a piano recital Sunday afternoon, Oct. 28, at 2:30 o'clock at the Woman's Club, 77 Seventeenth st., Hermosa Beach. Assisting will be Veda Hill, soprano, pupil of Bunola Kay.

Among the piano pupils who will play are: Lloyd Irwin Pittner, Norma Lynn Strauss, Carol Briggs, Theodora Sudduth, Martha Ruth Sederlund, Constance Marion Welch, Barbara Nance, Patty Joe Moore, Patricia Clevy, Ruth Schimnick, Nancy Ann Whyte, Eunice Paula Abramson, Thelma Flee, Norma Greene and Helton Alice Trafer.

## 175 MILE PIPE LINE

A new 175 mile pipe line costing more than \$3,000,000 to link the San Joaquin Valley oil fields with San Francisco bay, will be built by Standard of California within the next few months.

## Headquarters for



NOW'S THE TIME TO REPAIR, REPLANT OR RENOVATE YOUR LAWN

We Will Do It With Our Power Rake.  
You Can Do It With Scientific Re-NU.

**Pilger Nursery**  
Garden Needs  
1510 CARSON ST.  
PHONE TORRANCE 1943

**Finest Professional Service  
Lowest Possible Price**

**THERE'S NEW LOVELINESS  
AND NEW LIFE**

**IN MODERN  
EYEWEAR**

Come in and see the smartest things in eye-wear... feature flattering shapes and gay colors... styles so modish and becoming that they make wearing glasses a positive pleasure

**HAVE YOUR  
EYES  
EXAMINED**

Phone Redondo 6045  
Formerly M. L. Kemp

**Dr. G. E. Cosgrove**  
OPTOMETRIST

135 S. Pacific — Redondo Beach

Next Week End Is the

**Grand Opening**

**KIRBY'S**

1276 Sartori — Torrance

## Juvenile Problems Up 62 Percent

Juvenile problems as measured by petitions filed in juvenile court have increased some 62 per cent during the war years 1941-45.

This fact was brought to the attention of the program committee planning the Fourteenth Annual Conference of Coordinating Councils by John M. Zuck, probation officer of Los Angeles county in a statement endorsing the conference.

"We in the County Probation department are emphasizing more and more the preventive aspects of our work. Our long relationship with coordinating councils has borne dividends in preventing an even greater increase in the number of problems the department has had to handle during these wartime years," continued Mr. Zuck. "They will be of immeasurable assistance in helping youth to meet the problems of reconversion."

The conference will convene for an all-day session in Patriotic Hall on Monday, Oct. 29, at 9:00 a.m. and will terminate at 5:00 p.m. with an address by the Honorable William B. McKesson, judge of the juvenile court, who will summarize the discussions of the day and challenge the participants to renewed efforts on behalf of youth.

## Townsend Club No. 1

By LOTTIE WADE

Torrance Townsend Club No. 1 will hold election of officers for the coming year on next Friday night, Oct. 26. It is especially desired that all members be present to cast their votes for president, vice president, secretary and treasurer. As usual games will be played. Refreshments served and dancing for the remainder of the evening.

## BAND CONCERT

Band concert and baptismal service will be conducted in the Foursquare Church, 1207 El Prado, Thursday at 7:30 p.m. by the Harbor City Foursquare Church, which is the possessor of an excellent band. Rev. Piles, the pastor, will preach. Everyone is cordially invited to attend.

## Church Services

NOTICE: Copy for Church Notices cannot be accepted after 10 a. m. Tuesday.

**SAINT ANDREW'S CHURCH**—Protestant Episcopal. Engracia, between Arlington and Manuel. Rev. The Rev. Paul Moore Wheeler, Phone 560. Sun. services, 9:30 a.m. Junior church and school; nursery dept. through senior high, 11 a.m. morning service and sermon, 6:30 p.m. Young Churchmen's League, 1st and 3rd Sundays, 8 a.m. Holy Communion, 2nd Sun. Other services—2nd and 4th Thurs., 10 a.m. Holy Communion. Holy days as announced. Organizations—2nd Mon., 7:30 p.m. Vestry; 2nd and 4th Wed., 8 p.m. St. Cecilia's Guild, 2nd and 4th Thurs., 1:30 p.m. Woman's Auxiliary, 1st Thurs., 8 p.m. Altar Guild, 1st and 3rd Sun. p.m. Gardenia Episcopal Guild, St. Andrew's Church sponsors Boy Scout Troop No. 241, Cub Pack No. 241, Girl Scout Troop No. 415 and No. 74.

**CHURCH OF JESUS CHRIST OF LATTER-DAY SAINTS**—Bishop, Raymond A. Larson, American Legion hall, 165th and Normandie. Sun. school, 9:45 a.m. Sunday school, Relief Society and priesthood, Sun., 6:30 p.m. Sacrament meeting, Wed., 7:30 p.m. Mutual, Sat., 10:30 a.m. primary.

**FIRST FUNDAMENTAL BAPTIST CHURCH**—Walter H. Wagner, pastor, Park and Newton sts., W. 220th. Sun. school, 9:45 a.m. Morning service, 11:00 a.m. Evening service, 7:30 p.m. Young People's Meeting, Thurs., 7:30 p.m.

**KEYSTONE ASSEMBLY OF GOD**—Rev. Charlotte Shook, 485 W. 220th. Sun. school, 9:45 a.m. and 8 p.m. Christ Ambassadors service, Sun., 7 p.m. Wednesday and Friday at 8 p.m. prayer meeting, testimonies and short sermon. Monday through Friday, prayer service from 10 a.m. to 11 a.m. All are invited.

**METHODIST CHURCH**—Rev. Clyde E. Ruckman, pastor, El Prado at Carson. Sun. school, 9:45 a.m. I. W. Goss, Supt. Services 11 a.m. "One World in One Way." Service, 7:30 p.m. Youth and adults will meet together in worship after which the young people will retire for their study and the adult group will continue for their study. The Minister will lead the adult session. Young People, 7:30 p.m. Youth and adults meet jointly for the worship period. Wed., 7:30 p.m. The Committee on Evangelism will meet in the church parlor, Thurs., 12:00 m. Circle 2 of the W. S. C. S. will meet, 7:30 p.m. choir will meet at the church for rehearsal.

**CENTRAL EVANGELICAL COMMUNITY CHURCH**—H. Wesley Roloff, pastor, Marcelina at Arlington. Phone 131. Sun. school, 9:30 a.m. Service, 11 a.m. sources for living. Central church is engaged in a worship of an excellent band. Rev. Piles, the pastor, will preach. Everyone is cordially invited to attend.

**COMMUNITY PRESBYTERIAN CHURCH**—Rev. J. E. Orr, 2154 24th st. Lomita. Phone 1772-W. Sun. school, 9:45 a.m. Service, 11 a.m. "Reality in Worship." Annual Home-Coming Day. Fellowship Dinner at close of worship. Service, 7:30 p.m. opening two week Evangelistic Mission, Dr. A. T. Tomshany, Evangelist and Musician. Christian Endeavor, 6:30 p.m. prayer, 6:15 p.m. Dr. Tomshany will speak each evening except Sat. at 7:30.

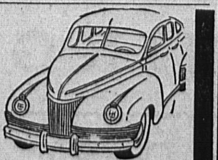
**FIRST CHURCH OF CHRIST SCIENTIST**—312 21st st. and Manuel ave. Sunday morning services at 11. Sunday school, 9:30 a.m. Wednesday evening meeting, 8 p.m. Reading room at 1750 Manuel ave., 11 a.m. to 4 p.m. each week day.

"He that shall endure unto the end, the same shall be saved," promised Jesus in the Golden Text from Matthew in the Sunday Lesson-Sermon in all branches of The Mother Church, The First Church of Christ, Scientist, in Boston. The subject is "Probation after Death." Scriptural accounts from John and Luke relate that after his resurrection, "when the doors were shut where the disciples were assembled for fear of the Jews, came Jesus and stood in the midst, and said unto them, Peace be unto you." "But they were terrified and affrighted, and supposed that they had seen a spirit. And he said unto them, Why are ye troubled? . . . for a spirit hath not flesh and bones, as ye see me have. And when he had thus spoken, he showed them his hands and his feet. . . . Then opened he their understanding, that they might understand the scriptures. "The resurrection of Jesus was not the return of a spirit," says Mary Baker Eddy in "Science and Health with Key to the Scriptures." "He presented the same body that he had before his crucifixion, and so glorified the supremacy of Mind over matter." "Jesus was 'the way'; that is, he marked the way for all men."

All are eligible to apply for membership in The Homeowners. A five million dollar, 30 year old Fraternal Legal Reserve, incorporated in 1910 to business in 20 states, in time of need your contract provides cash to pay your funeral bills. Yet you pay only a small amount monthly. One man paid in only \$5.00 but \$200 cash covering all his funeral expenses was paid by The Homeowners. Select your own mortuary.

MAIL THIS COUPON TODAY.  
Homeowners Life Association  
315 W. 9th St., Los Angeles, Dept. To send me FREE information how I can become a member of The Homeowners.

Name \_\_\_\_\_  
Address \_\_\_\_\_  
City \_\_\_\_\_



LOWEST RATES  
FINEST SERVICE  
**TORRANCE  
YELLOW  
Cab Service**  
24 Hour Service  
PHONE TORRANCE  
1000

## Dr. Bennett To Present Week's Program Here

Dr. W. Arnold Bennett, minister of the Mount Pleasant Baptist church of Vancouver, B. C., will conduct services nightly from Oct. 28 through Nov. 2 at First Fundamental Baptist church, Park and Newton sts., Torrance, according to the Rev. Walter H. Wagner, pastor. Services will start at 7:30 p.m. and all are welcome. The Rev. Mr. Wagner said.

Originally from London, England, Dr. Bennett has served in the pastorate on the Canadian

Prairies and in British Columbia and for some years returned to Great Britain where he engaged in an itinerant Bible Teaching and Evangelistic Ministry, covering England, Scotland, Ireland and Wales.

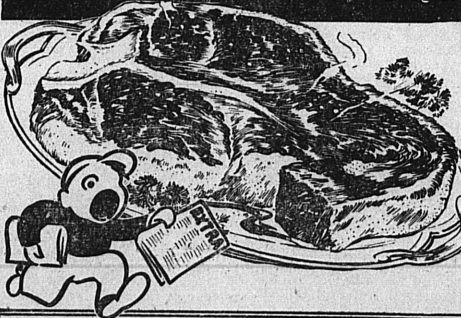
He tells of the revival and spiritual hunger in those parts prior to the Hitler regime, and believes that there is unprecedented opportunity for the evangelist there now. One of "Hitler Youth" leaders was converted under Dr. Bennett's Ministry and is an Evangelist now.

## NEW CLASS PRESENTED

A new class in the "Foundations of National Power" will be presented in the fall semester opening Oct. 26 at UCLA at the suggestion of the US Navy.

**Coming Soon**  
**Rexall's 1c Sale**  
**FAMOUS**  
**BEACON DRUG CO.**  
RELIABLE PRESCRIPTION SPECIALISTS THE REXALL STORE  
1519 Cabrillo — Torrance  
Agents for Greyhound & Torrance Bus Lines

## EXTRA QUALITY IN SAFEWAY MEATS... PERFECTION THROUGH SCIENTIFIC AGING



SAFEWAY is not content merely to offer the top grades of meat to customers. Before these fine quality meats are allowed to be placed on sale, they are scientifically aged in order that the utmost in tenderness and flavor may be achieved. The exact number of days required to "condition" the meats is determined by experts according to the particular type of meat. And within vault-like aging rooms, the temperature and humidity are at all times rigidly controlled. In short, Safeway employs every scientific means to develop high grade meats to a state of perfection. Thanks to this sort of ingenuity, you can now enjoy meats in your own home as tender, juicy and delicious as those served in famous hotels and restaurants.

<b>T-BONE STEAKS</b> Also Porterhouse & Club Steaks. Grade AA or A. (5 points pound)	lb. 50¢
<b>SIRLOIN STEAKS</b> Brail or pan-fry one of these. Grade AA or A. (5 points pound)	lb. 42¢
<b>PRIME RIB ROAST</b> Seven inch cut. Perfect oven roast. Grade AA or A. (4 points pound)	lb. 33¢
<b>CHUCK ROASTS</b> Seven bone or round bone beef roast. Grade AA or A. (2 points pound)	lb. 28¢
<b>BEEF SHANKS</b> Center cut. Grade AA or A. Low cost, point-free. (End cuts, lb. 10¢)	lb. 20¢
<b>BEEF SHORT RIBS</b> Also plate boiling meat. Grade AA or A. No points for these cuts.	lb. 21¢



Careful records are kept of the meat as it hangs in huge aging rooms at Safeway. Each cut carries a date tag.

<b>LAMB SHOULDER</b> Shank and neck off. Grade AA or A quality. (2 points per pound)	lb. 33¢
<b>LAMB BREAST</b> Braise or bake this economical cut of lamb. Grade AA or A. Point Free.	lb. 15¢
<b>WIENERS</b> Serve them with sauerkraut for popular treat. Type 2 wieners.	lb. 37¢
<b>GROUND BEEF</b> Fresh lean beef, packed in Visking casing. Now sold point-free!	lb. 29¢
<b>VEAL ROAST</b> Blade or arm cut. Grade AA or A quality. (2 points per pound)	lb. 29¢
<b>FRYERS, ROASTERS</b> New York style poultry. Grade A quality. Note low price at Safeway.	lb. 49¢

**Dutch Mill CHEESE**  
American Point free!  
2-LB. LOAF 69¢

**SUNNYBANK**  
Pure vegetable margarine.  
Shortening scarce? Use Sunnybank. 12 points per lb.  
lb. 19¢

**NUCOA**  
Best Foods brand margarine.  
For cooking or spread for bread. 12 red points per lb.  
lb. 26¢

**CHERUB MILK**  
Pure evaporated milk, with Vitamin D increased.  
(Small cans, 2 for 9¢)  
Tall 9¢  
Can

**BORDEN'S MILK**  
Popular brand of evaporated milk. Condensed milk is now point free!  
2 Tall 19¢  
Cans

If you like fresh bread, you'll like Mrs. Wright's TENDER BREAD 12¢

**COFFEE VALUES**  
Edwards Coffee 1-lb. rich blend jar 27¢  
Nob Hill Coffee 1-lb. full flavor jar 23¢  
MJB Coffee 1-lb. choice of drip or regular jar 33¢  
Filter Papers 2 pkgs. of 100 Dependable. Filter cloths, 2 packages of four, 15¢.

**CEREALS-PANCAKE FLOURS**  
Corn Flakes 11-oz. 8¢  
Kellogg All Bran 16-ounce size, 18¢  
H-O Oats 16-oz. 13¢  
Morning Glory 20-oz. 12¢  
Wheat Hearts 21¢  
Flapjack Flour 40-oz. 22¢  
Suzanna 40-oz. 16¢

**CANNED FOODS**  
Orange Juice 18-oz. 18¢  
Tomato Hot Sauce 7 1/2-oz. 4¢  
Tomatoes 28-oz. 17¢  
Tomato Soup 10 1/2-oz. 9¢

**TYPICAL SAFEWAY VALUES**  
Hauser's Sauce 9-oz. bottle 15¢  
Spaghetti Dinner 25¢  
Spaghetti 1-lb. 14¢  
Hemo 1-lb. 59¢  
Raleighs 2 pkgs. 27¢  
Sierra Pine 2 bars 13¢

**PRODUCE**  
GREEN CELERY lb. 13¢  
YOUNG CARROTS lb. 5 1/2¢  
SOLID CABBAGE lb. 5¢  
WINTER PEARS lb. 12¢

These prices are effective through Saturday, October 27. Right to limit is reserved. No sales to dealers.

2171 PACIFIC COAST HIGHWAY, LOMITA