

COURTESY and FRIENDLINESS Isn't  
Rationed at

## Wall's Market

—COMPLETE GROCERY DEPT.  
—FRESH VEGETABLES  
—FRESH & COLD MEATS

**OPEN ALL DAY SUNDAY**

And Every Week-day Until 6 P.M.—Saturday, 7 P.M.  
**2323 Cabrillo Torrance**

**SHOES FOR WOMEN  
SHOES FOR MEN  
SHOES FOR CHILDREN**

# KIRBY'S

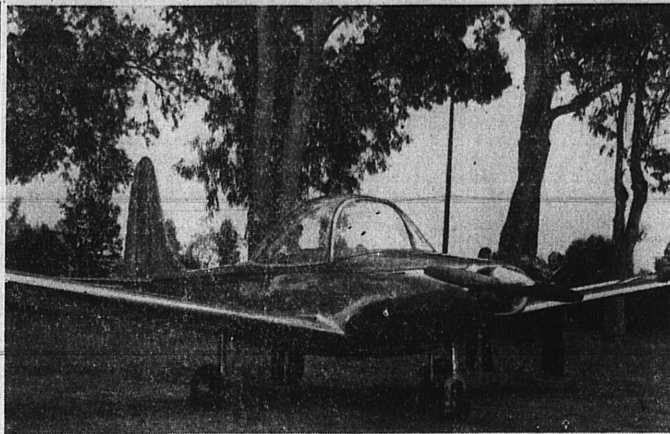
### Hospital Cases

The following patients, among others, were admitted to the Torrance Memorial hospital the past week:

George Johnson, 1839 W. 247th st.  
Mrs. Ida E. Johnson, 1939 Pacific Coast Highway.  
Mrs. Norman Moberley, 1303 Amapola ave.  
Mrs. Eva Rozell, 1437 Lomita blvd.

### ATOMIC-POWER PLANE

Lockheed Aircraft Corporation plans to build an atomic-power-driven airplane for private use, Robert E. Gross, president, has announced.



**MAKES MAIDEN FLIGHT**... The "Ensign," built by the All-American Aircraft Corp., Long Beach, was test flown at Torrance airport Thursday. It has a wing spread of 33 feet and an overall length of 22 feet. A vertical fin of 5 feet with a 10-foot horizontal stabilizer. It is said to land at 50 m.p.h. with controllability at all times. This two-place roustabout may be seen at Torrance airport.

### SUPPLIED PACIFIC

Cleared from west coast Army ports of embarkation to meet the requirements in the Pacific were two and one half million troops and more than 44 million ship tons of cargo during the 45 months prior to V-J Day.

## Torrance Airport Scene Of The New Ensign's First Test Flight

Torrance airport assumed a new role Thursday evening, as the new All-American "Ensign" was test-flown from the field.

It was the first new civilian plane to be tested from the Torrance airport, built by the Army as a sub-base for March field at a cost of almost \$1,000,000. The field is ideal for this use, it was pointed out.

A newcomer in the field, challenging the light plane industry, the "Ensign" is a personal-owner craft.

The first light plane of completely new design to enter the field in the postwar period, the "Ensign," according to Gerald Adler, president of the firm, embodies all the important war-developed aerodynamic and structural features, giving it safety, performance and comfort never before obtainable in planes of its class.

In its maiden flight, this low wing monoplane powered with a 75 H.P. Continental engine produced a top speed in excess of 125 m.p.h. and a practical cruising speed of 112 m.p.h. A cruising range of 500 miles plus, the "Ensign" climbs skyward at

### Building Permits

The following building permits were issued during the past week, according to building department records:

G. A. Bauman, 4016 Pacific Coast Highway, addition, \$800.  
George Tomajic, 4129 Pacific Coast Highway, addition, \$500.  
L. T. Eddo, 24438 Ward st., garage, \$375.

L. A. Pamplin, 2112 237th st., storage sheds, \$400.  
H. L. Harline, 22891 Ocean ave., garage, \$250.

Joseph J. Fatta, 2228 Gramercy ave., garage, \$400.  
Homeseekers Inv. Co., 708 Pacific Lane, repairs, \$142.

Pauline Keller, 18404 Hawthorne blvd., 2 car garage, \$400.  
Ray Studio, 1318 Sartori ave., remodel store front, \$1800.

M. W. Collins, 23088 Hawthorne blvd., storage shed, \$150.  
T. H. Baker, 1518 Amapola ave., repair chimney, \$150.

Torrance Flower Shop, 1400 Cravens ave., Neon sign, \$150.

**LLOYD WARTHAN**  
Pvt. Lloyd C. Warthan, Jr., arrived Sunday for a 15-day delay on route furlough from Lowry Field, Denver Colo. to Keesler Field, Miss.

## Army Looks For Servicemen Missing In Action

Army "Search Teams," consisting of five men to a team, are combing the battlefields of Europe and the Pacific for personnel now listed as missing in action and to obtain further in-

formation on servicemen who have been killed in combat, the War Department revealed recently.

These special teams will attempt to clarify the status of approximately 20,000 ground and air force men listed as missing in all theaters. They will be assigned a certain area of approximately one and one-half square miles and will be well informed on the language of the specific locality.

## The Chevron Sign Charlie

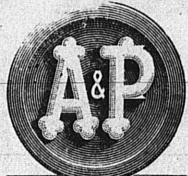


"I'd like to see the manager!"

You don't have to look far to see the manager... 'cause I'm right here on the job all the time. Not only to see that you are served right to begin with, but to correct any error we might make! Of course, I have not made a mistake in twenty years, but could be. That's why they put erasers on pencils.

**Charlie Mitchell**

Chevron Gas Station  
Carson at Cabrillo — Torrance



SUPER MARKETS

The Great Atlantic & Pacific Tea Co.

Ration-Free!

CAMPBELL'S NEW PACK  
Tomato Soup 3 No. 1 Cans 25¢  
GOLDEN CORN Niblets 12-oz. Can 13¢  
KERN  
Tomato Juice 46-oz. Can 19¢  
RED CHEEK  
Apple Juice 12-oz. Bottle 22¢  
TREESWEET  
Orange Juice 46-oz. Can 43¢  
WHITE HOUSE SWEETENED Condensed Milk 14-oz. Can 14¢  
IONA SLICED Peaches No. 2 1/2 Can 21¢  
AMERICAN CHEESE SPREAD  
Ched-O-Bit 2-lb. loaf 67¢

## Top Quality Meats At Thrifty A&P Prices!

A&P has always offered only the very finest meats, poultry and seafoods that the market affords. Now, A&P is happy to announce that

its meat department features Grade A and AA meats exclusively! For good eating at modest prices... turn to A&P!

**POT ROAST** Chuck or Round Bone Grade A 25¢ lb.

**PLATE RIBS** For Braising or Boiling Grade A 19¢ lb.

**SIRLOIN STEAKS** 38¢ lb.

**LAMB LEGS** For Frying or Broiling Grade A 38¢ lb.

**CHICKENS** Fancy Midwestern FRYERS, ROASTERS. GRADE A 47¢

Also Fowl for Baking or Fricassee: Young Prime Turkeys

Superior Cured-Fresh Seafood

**ALASKA RED COD** Sliced 30¢ lb.  
**EASTERN FILLET HADDOCK** 45¢ lb.  
**PACIFIC OYSTERS** Pint Jar 93¢

Check These Thrifty A&P Prices

**HUNT**  
Tomato Sauce 8-oz. Can 5¢  
SWEETOSE GOLDEN Staley Syrup 1 1/2-lb. Glass 14¢  
MOUNTAIN Honey 5-lb. 1 1/2¢  
VAL VITA Mackerel 1-lb. Can 13¢  
DRIP OR REGULAR MJB Coffee 1-lb. Jar 33¢  
MAXWELL HOUSE Coffee 1-lb. Jar 33¢  
DRIFTED SNOW Flour 25-lb. 1 1/2¢

**CALIFORNIA**  
Grated Tuna 6-oz. 25¢  
WARRANTY White Tuna 7-oz. 37¢  
STALEY CREAM Corn Starch 1-lb. 8¢  
CLAPP'S STRAINED Baby Foods 2 4 1/2-oz. Pkg. 13¢  
SNOWFLAKE Crackers 1-lb. 17¢  
NBC Shreddies 12-oz. Pkg. 13¢  
DURKEE FAMOUS Meat Sauce 10-oz. Bottle 27¢

Everyday Needs!

Cream of Wheat 28-oz. Pkg. 22¢  
MJB White Rice 2-lb. 24¢  
Morton Salt Plain or Iodized 26-oz. 7¢  
Purex Bleach 125-qt. Gallon 21¢  
Waxed Paper Cutlery 16¢  
Borax 20-Mule Team 2-lb. 23¢  
Sunbrite Cleanser 14-oz. 5¢  
Argo Starch 3-lb. 20¢  
Diamond Matches 6 No. 5 Boxes 27¢  
Shoe Polish Split-Brown or black 2 1/2-oz. 7¢  
Scotch Triple Action Cleanser 14-oz. Pkg. 40¢  
White King Granulated Soap 46-oz. Pkg. 23¢  
Calla Lily Facial Soap 3 Cakes 23¢  
Woodbury

### CIGARETTES

POPULAR BRANDS  
Carton of Ten Pkgs. \$1.33

Jane Parker

### FRUIT CAKE

"Old-Fashioned Flavor Makes It America's Favorite!"  
3-lb. \$1.65  
1 1/2-lb. cake 85¢

## A&P LIQUOR VALUES

Gallo Wines Vintage 83¢  
Puma Wines 7-Star Dry 82¢  
Sun Valley Wines 49¢  
Dixie Belle Gin 3 1/2¢  
Southern Comfort 100-Proof Liqueur Pint 3 1/2¢  
Marimba Rum 88-Proof Imported 5 1/2¢  
Three Feathers Reserve Whiskey 5 1/2¢  
Schenley Reserve 5 1/2¢

### BOKAR COFFEE

1-lb. Bag 26¢  
Vigorous and Winy

### LIFEBUOY

HEALTH SOAP  
3 Cakes 20¢  
(When Available)

### IVORY SOAP

3 Large Bars 29¢  
PERSONAL IVORY, 2 Cakes 9¢  
(When Available)

### DASH

GRANULATED SOAP  
Large Package 26¢  
(When Available)

### SWAN SOAP

Medium Bar 6¢  
(When Available)

from LEVY'S  
go--

*Fallward in a New Suit*

By

**Hart Schaffner & Marx**

Fine quality tailored Hart Schaffner and Marx Suits that feature the latest styles for the man who dresses up to the minute. Choice of styles and colors. Tailored from fine wools.

**\$50**

Other Famous Brand Suits  
\$22.50 to \$55.00

USE LEVY'S CHARGE  
BUDGET or LAY-AWAY

### BOYS AND STUDENT DEPARTMENT

For your boy and student (ages 3 to 16) we have new shipments of Knickerbocker and Tom Sawyer brand clothing. Everything he needs for school and play in style and comfort. Suits, coats, sweaters, shirts, hats, ties, fingertip coats and many other items he needs most.

**SAM LEVY**  
DEPARTMENT STORE

1307-1313 Sartori Ave. Torrance  
Twenty-five Years In Torrance



Have Your  
Photograph  
Taken Now  
For Christmas  
Giving!

Nothing is more cherished than a photograph of a loved one. Make an appointment today to give us plenty of time to make a handsome natural portrait. You will be pleased with the results of our expert work.

**Bell Studio**  
1650 Cabrillo  
Phone Torrance 2051-W