

STORKatorials

The stork visited the following parents, among others, at the Torrance Memorial hospital during the past week.

Mr. and Mrs. Russell Craig, 1606 Gramercy ave., boy, Oct. 11, 10:18 p.m.

Mr. and Mrs. G. L. Hearson, 20721 S. Vermont ave., boy, Oct. 16, 8:09 a.m.

TARTAR KNIGHTS

The Tartar Knights had an election and nominated new members for this year. Those receiving new promotions were First Lieut. Bill Stanley and Second Lieut. Frank Dominguez. Those receiving membership were: Ralph Jakubowski, Corky Northway, Leroy Wright, Jay R. Stroh, Bill Jackson, and Merwin Jarrett.

Flower Shop Occupies New Quarters

Torrance Flower Shop will occupy new quarters at 1400 Cravens ave., corner of Post ave., Monday, Oct. 22, and Reno

Reckless Driving Charges Brought By Police Chief

Reckless driving charges were brought against Jerry Maples, 17 year old merchant seaman, for using the streets near the Torrance High school as a race track, Police Chief John Stroh reported.

In a complaint signed by Stroh, it was charged that Maples drove a car belonging to T. J. Bailey Sr., 21936 So. Main st., in which his son, T. J. Bailey Jr., was a passenger, in and around the high school grounds at an excessive speed, endangering life and property and finally ending up, (of all places) by jumping the curb onto the chief's lawn and damaging a dead tree valued at \$150.

The chief reported that he would demand the car owner pay all damages to the property affected. A hearing will be held Friday before Judge Otto B. Willett.

AT KEESLER FIELD
Pvt. John Robert Garner, AAF, has completed basic training and with a rating as an air-

Program Plans For Halloween Party Completed

The City Recreation department has announced the schedule for the forthcoming Halloween party at the Clive Auditorium, Oct. 30.

The party will open with a parade through the City of Torrance ending in the grand march at the auditorium. Prizes will be given for the best costumes, most comical, most original and the best representation of a fictitious or true-to-life character. These prizes will be awarded to three classes: Grade school, Junior high and Senior high.

Group singing, stunts, skits and special music will be on the program at the auditorium followed by a costume ball. A good dance band will be provided, according to reports.

craft engine mechanic, has been reassigned to Keesler Field, Miss. Pvt. Garner is a son of Mr. and Mrs. John R. Garner, of 803 Amapola ave.

Esther Lowen Is New Assistant At Chamber Office

Mrs. Esther Lowen, 904 Beach ave., a local resident for 22 years, is assistant secretary of the Torrance Chamber of Commerce, according to Blaine Walker, executive secretary.

Mrs. Lowen succeeded Mrs. Lillian Hiltunen, 2014 Torrance blvd., to the position. Mrs. Hiltunen, who has been assistant secretary since April, resigned to prepare for the homecoming of her husband, Coxswain Reuben

TOP FIGHTER-WRITER

American Army personnel stationed in England wrote 258,000 V-Mail letters to friends and relatives in the United States between June, 1942, and August, 1945.

Hiltunen, now stationed on the USS Rice Victory in the Pacific. The new assistant secretary was office manager of the War Housing office here at the time it was discontinued. She is a past president of the Fern ave. P.T.A. and has been active in Red Cross and Eastern Star work.

A daughter, Neva June Lowen, is a junior at Stanford University.

APPRENTICE TRAINING

On-the-job training is now giving the soldier in Europe an opportunity to prepare himself to do a skilled trade when he returns to the United States.

TILE CONTRACTING

- Remodeling
- Interior Tile
- Bathrooms
- Drainboards

No Priority Required. Expert Workmanship.

E. G. COLLINS

Tile Contractor
PHONE TORRANCE 1145-J

Austin Studios

NOW OPEN

DAILY 9 A.M. TILL 9 P.M.

and

SUNDAYS

12 NOON TO 6 P.M.

Have Your Christmas Portraits Made Now!

448 W. Sixth Terminal 2-4306
San Pedro

Full Strength DDT

Now Available at

BEACON DRUG CO.



PRESCRIPTION SPECIALISTS
THE RXALL STORE



1519 Cabrillo — Torrance
Agents for Greyhound & Torrance Bus Lines

EVERYONE IN TORRANCE AND LOMITA READS
THE HERALD-NEWS WANT ADS!



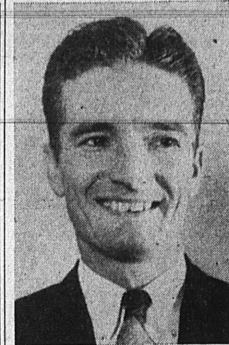
25% DEPOSIT WILL Hold Any Gift 'Til Christmas



- DOLLS GALORE
- BOOKS—GAMES
- TABLE & CHAIR SETS
- PULL & PUSH TOYS
- BALLS—BATS—GUNS
- DISH SETS
- DOLL BUNK BEDS

Carol's Children's Store

Use Our Lay-Away Plan
INFANTS TO TWELVE
Largest Stock in the Harbor District
Clothing, Toys, Furniture and Shoes
24801 Narbonne Avenue Phone Lomita 80



JAMES YELTEMA
Flower Shop Associate

Langstaff in announcing the new location revealed that James Yeltema had become associated with the firm.

Yeltema, formerly of Paducah, Ky., has moved his family to Torrance, residing at 2114 Cabrillo ave., and he has been in the flower business for the past 12 years. He is an expert in flower arrangement and design.

The firm has taken a three year lease on the quarters, formerly occupied by Torrance Area Service Center, and at the expiration of the lease will build on a site opposite the postoffice, it was said.

The public is invited to visit the new store and see the large display of flowers, plants and novelties.

Kiwanis Club Hears Nelson Boost Business

Predicting Torrance as a great industrial center, Dr. Elmer S. Nelson, former teacher of economics at Yale University and USC, now associated with the Los Angeles Office of Price Administration, addressed 50 members and guests of the Torrance Kiwanis club Monday evening.

The OPA executive based his prediction on the geographical location of Torrance, which now is in the heart of a new and inestimable Pacific trade empire. Not only will Southern California develop its own manufacturing resources but will facilitate shipping of the great manufacturing industries of the east, he declared.

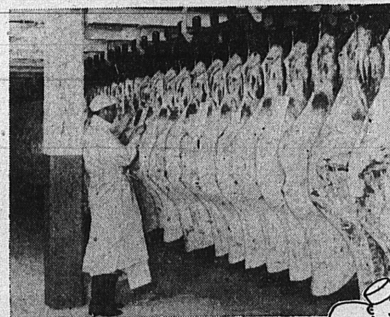
Special honor was accorded the club's returning lifetime member, Captain Louis Zamperini who attended the meeting with Chief Specialist Pete Zamperini and their father, Anthony Zamperini.

Entertainment was furnished through the courtesy of Charlie Mitchell who introduced the "Accordionettes," a talented group of young accordion players. Dean Sears was chairman of the evening.

Carl Creamer Was Prisoner Of Japanese

During a recent telephone conversation with her cousin, Carl Creamer, of Idaho, Mrs. Russell Paxton, of 1301 Crenshaw blvd., learned that he had been interned in the same Japanese prison camp with J. R. Newton, recently liberated, Newton has rejoined his parents here. Creamer had been a frequent visitor at the Paxton home before he left for overseas.

READ OUR WANT ADS

FINE MEATS BECOME MORE TENDER IN SAFEWAY'S HUGE AGING ROOMS

SAFEWAY GUARANTEED MEATS ARE PERFECTED LIKE THOSE FOR FINE HOTELS & RESTAURANTS

IT IS NOT ENOUGH that Safeway buys only the top government grades of meat. The Safeway plan of perfecting meat for market calls for each cut to remain the correct number of days in huge aging rooms at our Central Meat Plant. Here, temperature and humidity are carefully controlled to retain full juiciness in the meats while they achieve peak tenderness and flavor. This is the same process of natural meat aging that is used by fine hotels and restaurants.

When they reach perfection, the meats are rushed to Safeway markets in refrigerated trucks. After excess bone and fat have been removed by our famous waste-free cutting method, the GUARANTEED MEATS are offered for sale... every cut guaranteed to please you, or your money cheerfully refunded.

CHUCK ROASTS

Arm or blade cuts. Grade AA or A beef. (2 points per pound)

lb. 28¢

PRIME RIB ROAST

Perfect oven roast. Seven inch cut. Grade AA or A beef. (4 points lb.)

lb. 33¢

T-BONE STEAK

Also Porterhouse or Club. Grade AA or A beef. (5 points pound)

lb. 50¢

SIRLOIN STEAK

Delicious steak of Guaranteed Beef. Grade AA or A. (5 points per pound)

lb. 42¢

ROUND STEAK

Top or bottom cuts—to twist. Grade AA or A. (6 points per pound)

lb. 40¢

BEEF SHANKS

Center Cuts. Grade AA or A Beef. (End cuts, lb. 10¢) Point Free!

lb. 20¢

SHORT RIBS

Or plate boiling beef. Grade AA or A. Low cost, point free meat.

lb. 21¢

GROUND BEEF

Fresh lean beef, packed in Viking. Use for meat loaf. Point Free!

lb. 29¢

PORK SAUSAGE

In the bulk. Fry for breakfast. Now a point free meat item!

lb. 39¢

LAMB SHOULDER

4 or 5 lb. Round bone chops. Grade AA or A. (2 points pound)

lb. 33¢

LAMB ROAST

Large loin (shank) Grade AA or A. (4 points pound)

lb. 45¢

LAMB CHOPS

Fancy rib chops. Grade AA or A lamb. (Only 3 points per pound)

lb. 45¢

LAMB CHOPS

Also Lamb Roast. Small end of loin. Grade AA or A. (5 points lb.)

lb. 57¢

LAMB BREAST

Delicious when broiled or baked. Grade AA or A quality. Point Free!

lb. 15¢

VEAL CHOPS

Tender rib chops—broiled them. Grade AA or A. (3 points per lb.)

lb. 40¢

VEAL ROAST

Blade or arm cuts of shoulder. Grade AA or A. (2 points pound)

lb. 29¢

LING COD FILLET

Fancy quality, boneless fish. Note low price at your Safeway.

lb. 38¢

SUNNYBANK MARGARINE

Use this pure vegetable margarine in place of scarce shortening. 12 points per pound.

lb. 19¢

CANNED FRUIT

Peaches Castle Crest Brand 29-oz. 23¢

Fruit Cocktail 30-oz. can 31¢

Sacramento Brand.

CANNED JUICES

Tomato Juice Libby 47-oz. 22¢

Tomato Juice Sunny 18-oz. 9¢

Grapefruit Juice Down 16-oz. 13¢

Town House Brand. 46-oz. can, 30¢.

TYPICAL SAFEWAY VALUES

Fresh Bread Mrs. Wright's 1-lb. 8¢

Wheat or enriched white. 1 1/2-lb. loaf, 12¢.

Flapjack Flour 40-oz. 22¢

Kitchen Craft Flour 10-lb. 57¢

5-lb. 30¢; 25-lb., \$1.32. Ask about big contest.

Red Hill Catsup 13 1/2-oz. bottle 13¢

Tomato Sauce Hunt's 8-oz. 5¢

Niblets Del. Mol. Golden 12-oz. 13¢

Dog Food Allbreeds Brand 26-oz. 23¢

DUTCH MILL CHEESE

Fine American Cheese. Use for sandwiches and cooked cheese dishes.

2-LB. LOAF 69¢

CHERUB MILK

Pure evaporated milk with Vitamin D is added. Note low price.

TALL CAN 9¢

LIBBY'S MILK

Also Special Morning Brand canned milk.

2 TALL CANS 19¢

LARGE GRADE A EGGS

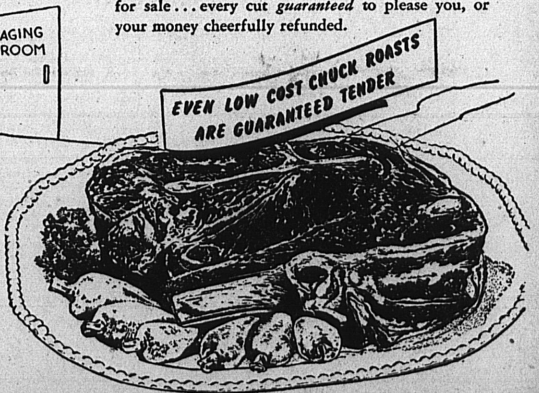
Breakfast Gems Brand. Large, white, Grade A.

Eggs. Packed in cartons.

PER DOZEN 66¢

These prices are effective through Saturday, October 20, 1945. Right to limit is reserved. No sales to dealers.

SAFEWAY



MORE TENDER MEAT IN LAMB SHOULDER AT SAFEWAY

ORDINARY CUT - The usual roast shoulder of lamb includes portions of the neck and breast as well as the large shank bone.

SAFEWAY'S CUT - Safeway gives you just the fancy center portion of the lamb shoulder to roast. The neck and heavy shank bone are removed and sold at lower prices.

TEA AND COFFEE

Canterbury Tea 1/2-lb. 43¢

Airway Coffee Ground to order lb. 20¢

Edwards Coffee Drip or 2-lb. regular jar 53¢

BREAKFAST CEREALS

Kellogg's Pep 8-oz. 9¢

Shredded Wheat NBC 12-oz. 11¢

Shreddies Delicious NBC Cereal 12-oz. 13¢

WINES

Muscatel Wine Also Port 73¢

Burgundy or Claret Fids Wine 49¢

Monte Cristo Wines Per 97¢

Muscatel, Port or Sherry. (Sauternes, 60¢ per fifth)

NOTE: Wines are offered for sale only in Safeways licensed to sell them.

BLEACH-CLEANSERS

White Magic Liquid Bleach 1/2 gal. 17¢

Old Dutch Household Cleanser 2 14-oz. 15¢

Glass Cleamer Clearer Brand 6-oz. bot. 12¢

FRESH PRODUCE

Select your own produce at Safeway.

CHERRY RHUBARB

Fancy grade—crisp, red. Makes perfect pie and sauce. lb. 8¢

PIPPIN APPLES

Crisp, green, northern grown fruit. Use for apple pie. lb. 10¢

CHAYOTE SQUASH

Delicious variety of squash. Just peel, cube and boil. lb. 10¢

JERSEY SWEET POTATOES

Smooth, uniform size. Enjoy them baked. lb. 8 1/2¢

BELL PEPPERS

Smooth, crisp and green. Nice for salads or for stuffing. lb. 12¢

**SHOES FOR WOMEN
SHOES FOR MEN
SHOES FOR CHILDREN**

KIRBY'S

1301 SARTORI AVENUE, TORRANCE

2171 PACIFIC COAST HIGHWAY, LOMITA