

## National Paint &amp; Wallpaper

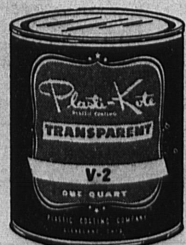
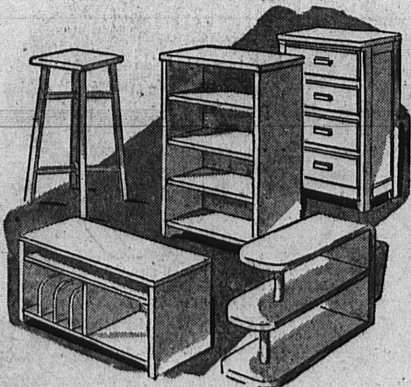


## 36 Jewel Tones for Every Part of Your Home

Yes, Plasti-Kote goes everywhere! You'll find this modern discovery a bright boon to everyday living... an economical luxury to your home. It leaves a fresh, clean-looking surface that does not chip, crack or peel, but remains sturdy and glossy... resisting alcohol, fruit juices, boiling water and the wear and tear of daily use. One coat of Plasti-Kote is usually all that is necessary. It flows on without brushmarks, is scrubbable, easy to keep clean! Of the 36 amazing magic colors you are sure to find just the tone you need to create that bright setting... that livable and attractive home.

### Look At These Features

- Easy to Apply
- Quick Drying
- Leaves No Brush Marks
- Won't Chip, Peel or Crack
- Leaves a Tough, Non-Skid Finish
- May Be Used Inside or Outside
- Can Be Used on New or Old Surface
- Wear, Water and Alcohol Resistant!



**\$2.95**  
Per Quart

**NATIONAL**  
PAINT & WALLPAPER  
1405½ Sartori — Phone 846  
TORRANCE

## VICTORY CHEST WORKERS INVADE FIELD AS ANNUAL DRIVE UNDERTAKEN HERE

Torrance, Lomita and Harbor City Victory Chest campaigners, observing the official kickoff, are invading the residential areas today, armed with work kits and an enthusiastic belief in the importance of Chest giving. Their objective is a goal of \$41,000 for Torrance and \$2,700 for the Lomita-Harbor City Chest.

In Torrance George L. Johnson is campaign leader and J. P. Hammetman serves in this capacity for the Lomita-Harbor City area.

Johnson's top aides are James L. Lynch, vice chairman in charge of establishments; Hillman R. Lee, colonel in Division 255 which combines both business and residential; Rev. B. H. Lingenfelter, colonel, who has supervision of the entire residential solicitation. Rev. Paul Moore Wheeler, chairman of the speakers' bureau, combines this task with the position of major in Division 255. Reed H. Parkin is co-chairman of the speakers' group.

Distribution of all leaflets, placards and other campaign literature was performed by Morris T. Bewley, Scout executive for this area and his troops.

Chairman Hammetman's immediate assistants are Frank D. Howell, who combines the task of assistant chairman with that of head of the speakers' bureau. His assistant in the latter capacity is Mrs. Linden Johnson. Other top leaders are Mesdames E. C. Kuhns, N. F. La Porte, Max Schatz and Retta Nelson. This phase of giving is being brought to the attention of

housewives, who are urged to make a personal gift in addition to any made by husbands at their places of business. For convenience, solicitors will offer pledge cards which will make it possible to spread the gift over several weeks or months.

Fund raising in these two communities will be for the purpose of providing support for the 140 agencies of the Los Angeles Area Victory Chest with which the two communities are affiliated.

Direct benefit to citizens comes through the Torrance Service Center where representatives of many agencies are established to meet health and welfare needs of everyone. The Center moved recently from 1400 Cravens avenue to 1339 Post avenue. During the past two years that the Center has been open it has been demonstrated how cooperation, mutual helpfulness and planning can contribute to the common good. Chest gifts make it possible.

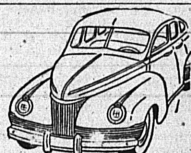
In their appeal for funds local people remember the needs of armies of occupation, service men in hospitals and camps, merchant seamen and needy allies.

In addition to local instruction meetings, a radio round table kickoff program will take place tonight over Station KMPC from 9:15 to 10, when Preston Hotchkis, general campaign chairman and other top leaders will participate.

### New Ration Chief Named By OPA District Office

Edwin A. Poehlmann today was named OPA district rationing executive, succeeding Paul Barksdale d'Orr, who last week assumed the post of district director. Poehlmann's appointment—made by d'Orr—was announced by John O'Connor, deputy district director.

The new rationing chief has been with the government agency since its inception and at the Los Angeles office since May, 1942. He had been d'Orr's assistant all through the rationing period.



● LOWEST RATES  
● FINEST SERVICE  
**TORRANCE**  
**YELLOW**  
**Cab Service**  
24 Hour Service  
PHONE TORRANCE  
**1000**

### The Chevron Sign Charlie



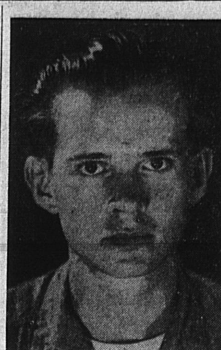
"Of course, it could be just coincidence..."

People are funny, but dad is no dope! He is one of the hundreds of Torrance and Lomita motorists who have discovered that the new Chevron Gasoline puts new car power in the family bus! A tank full does it!

**Charlie Mitchell**  
Chevron Gas Station  
Carson at Cabrillo — Torrance

**SHOES FOR WOMEN**  
**SHOES FOR MEN**  
**SHOES FOR CHILDREN**

**KIRBY'S**



**DFC AND AIR MEDAL**... Charles J. Fletcher, seaman 1/c, USNR, whose parents, Mr. and Mrs. Chester W. Fletcher, live at 1121 Maple St., Torrance, has received the Distinguished Flying Cross and the Air Medal for extraordinary achievement while taking part in aerial combat missions over enemy territory in the Southwest Pacific. The awards were made at a 7th Fleet Air Base in the Philippines.

### Harbor District Chambers To Meet In Gardena

Plans are now being completed by the directors of the Gardena Valley Chamber of Commerce and Secretary Pat MacDonnell for entertaining the Harbor District Chambers of Commerce tonight.

Representatives of some 50 civic organizations in the Harbor area are expected to be present for the monthly business meeting which will be followed by a dinner meeting. Torrance City and Chamber of Commerce officials will attend.

Committee meetings will be held at 4:30 in the afternoon at the City Hall and the dinner meeting is scheduled for 6:30 at the Wednesday Progressive clubhouse, 16121 Orchard avenue. Members of the 20th Century Class of the Methodist church will serve the dinner.

An interesting program is being arranged by MacDonnell who is also president of the Harbor District Chambers of Commerce. The musical program will be in charge of Mrs. L. Roy Jenkins and Mayor James L. Rush will give the address of welcome.

### Lloyd E. Peele In Santa Barbara For Relaxation

Pfc. Lloyd E. Peele, of Torrance, Calif., has reported to the Army Ground and Service Forces Redistribution Station in Santa Barbara for two weeks of rest and relaxation at this southern California city's famed resort-hotel, now under Army management. The veteran recently returned from 25 months' overseas duty in ETO.

The Ninth Service Command station, one of six established across the nation, offers a comprehensive program of recreation, athletics, and entertainment to returning guests.

### Ralph W. Lanning Is Serving On Isle Of Guam

Ralph William Lanning, hospital apprentice, first class, USNR, 1415 Amapola ave., Torrance, is serving on Guam with U. S. Fleet Hospital No. 103. The hospital, after moving from Samoa when its usefulness there was over, cared for casualties from Iwo Jima and Okinawa.

Business, professional or personal cards are readily obtainable at the Torrance Herald office. Phone Torrance 444, 448.

## Winner Of Many Medals And 96 Points Returns

Sgt. Stacy Griffith, 1545½ W. 218th st., walked into the Herald office with his mother Oct. 4, bought a paper, then suddenly exclaimed: "Gee, Ma, Zampini ain't dead! Boy oh boy!"

Your reporter having overheard this followed the Sergeant outside and inquired: "That's been hot news for three weeks, sergeant, where have you been?"

Upon closer examination of the sergeant, it was very obvious where he had been. A gunner aboard a B-17 with 36 combat missions over Europe, the recipient of the coveted D.F.C., with three Oak Leaf Clusters, the Air Medal, three battle stars, E.T.O. and the Presidential Unit Citation.

Sgt. Griffith has also been recommended for the Purple Heart, having been wounded during combat. He enlisted in March of 1942 and had 96 points at the time he was honorably discharged at the San Bernardino Army Air Field.

A twin brother, Tracy Griffith, was reported to be still in France, with the infantry. Mrs. Griffith state that the boys, who have not seen each other in more than three years, were separated in 1942 for the first time in their lives.

### Martin's Feed Store

#### Carrying...

- ACE-HI FEED
- CAPITOL MILLING FEEDS
- FLY-DED with DDT (While It Lasts)
- FRENCH'S BIRD SEED
- SUNBALM POULTRY AND RABBIT REMEDIES

We Deliver

Hawthorne & Newton Sts.  
IN WALTERIA  
Phone Redondo 7778

### PLANT Lettuce NOW

AGGELER & MUSSER have long been noted for their top quality lettuce seed. When you need lettuce seed it will pay you to see us first as we have a complete stock of all the better varieties. A call or card will bring one of our field men to your ranch. Buy Aggeler & Musser seeds from your dealer or call one of our Branch Stores.

**AGGELER & MUSSER SEED CO.**  
852 MATCO STREET - LOS ANGELES, 21 CALIF  
Office & Warehouse—LOS ANGELES 21, CALIFORNIA  
Branches: SAUNTA, SANTA MARIA, SAN DIEGO, VIKALIA, BEARLEY, EL MONTE  
GARDENA • 924 W. GARDENA BLVD. • MENLO 42555

### PLANT BULBS NOW

For best results, plant EARLY... so roots will make proper growth before flowering season!

**A Good Feeding of Bone Meal Before Planting Insures LONG STEMS and BRIGHT COLORED LARGE FLOWERS!**

#### WINTER FLOWERS

Calendula - Pansies  
Stocks - Snapdragons  
Sweet Peas, Etc.

Now Is The Time to Control SCALE PESTS  
Young scales are hatching out and are easily controlled by all sprays. You name the size and brand—we'll have it! We try to stock all the best brands.

#### FERTILIZERS

All Sizes and Brands  
• Canadian Peat Moss  
• Oak Leaf Mold  
• Basket Moss - Pottery

Open 8 A.M. to 6 P.M. - Closed Every Tuesday

#### WINTER VEGETABLES

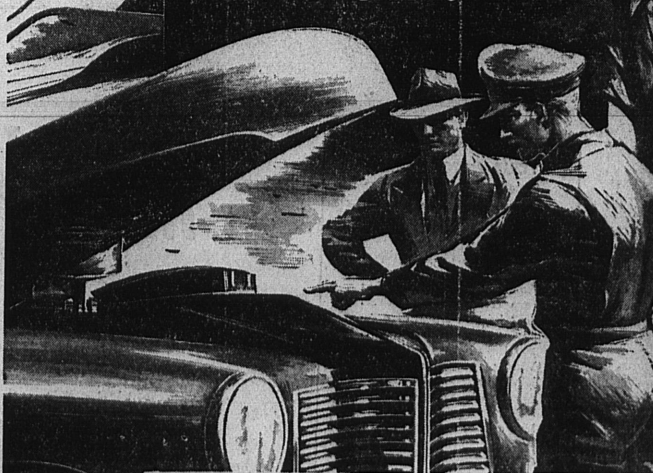
Should Be Planted Now  
ALL LEAF CROPS SUCH AS CABBAGE - LETTUCE CAULIFLOWER CHARD, etc.  
Do better in cooler weather and so do root crops such as RADISHES - CARROTS TURNIPS - BEETS PARSNIPS - Etc.

NICE FRESH SEEDS or PLANTS Ready To Set Out On Leaf Crops

## MERRICKS

A MERRICK-AN nursery  
Formerly the ABC Nursery 1400 Redondo Beach Blvd. Gardena - Menlo 4-1023

## What If Your Car Broke Down Now?



Guard against this with —

**MOBILUBRICATION**  
Don't chance a breakdown with new cars still so far distant. Help your older car last it out with complete, systematic Mobilubrication.

Your Independent Mobilgas dealer follows a scientific chart of your car — using quality Mobilgreases from the same refineries that produce millions of barrels of lubricants for the Armed Forces.

Complete Mobilubrication gives you a car that runs better, lasts longer — and uses less gasoline!

For more dependable car performance drive in today for Mobilubrication at the Sign of the Flying Red Horse.



**Mobilgas AND Mobiloil**  
AMERICA'S FAVORITE GASOLINE WORLD'S LARGEST SELLING MOTOR OIL