

## Masonic Officials Will Meet In San Francisco Oct. 11

Fire Capt. J. R. Winters, past master of the Masonic Lodge, and Murray Little, of Lomita, will leave today for San Francisco where they are to attend the convention of the Masonic Grand Lodge of California.

New officers will be installed, according to Capt. Winters, in addition to the handling of new business by the delegates. Under normal conditions, Winters said, this convention would last for several days, but an attempt will be made by these heads to finish all business within one day.

### Hospital Cases

The following patients were admitted to the Torrance Memorial hospital, among others, during the past week:

Elbert Boswell, 1659 W. 214th St.

Mrs. Edith Ericson, 22407 So. Denker Ave.

Mrs. Louise Sims, 2304 Gramercy Ave.

Mrs. Ruth White, 3615 Emerald Ave.

### BRIDGE OPEN

Traffic is again going through on the Mokelumne River Bridge, which had collapsed some time ago. Some work was still being done on the bridge, as of September 27, and trucks are subject to load limits.

### OFFER FILED

An offer of John E. Miller to buy the three lots at the corner of El Prado and Cravens Ave., now owned by the city, for \$10,000 was ordered "filed" by the City Council Tuesday night.

## Long Beach CG Separation Unit At Top Of List

Coast Guard Separation Center, No. 11, in Long Beach Calif., today announced that reports on the demobilization of Coast Guard personnel throughout the country places the local center at the top of the list with the highest daily average of discharges. Men and women of the Coast Guard are now being released here at the rate of 100 a day.

From V-J Day to the end of last week the Coast Guard has maintained a high nationwide average on its demobilization program, proportionate to the strength of this branch of the service. Approximately 15,000 Coast Guard personnel are scheduled for release through the Long Beach center within the next six months. Of this figure 2,032 have already been discharged as of yesterday, including SPARS and officers.

### AT SAN FRANCISCO

Merle Clifford Richardson, seaman, 1/c, USNR, of 1021 Cravens, Torrance, Calif., has reported in at the Treasure Island U.S. Naval Armed Guard Center, after spending 15 months as a member of a gun crew aboard a merchant ship.

## Australia Aided Americans With Food and Fabrics

Eighty-five per cent of the food produced in Australia during the war has gone to the



REV. R. J. MENMUIR

United States forces in the Pacific theatres of war, the Rev. Ronald J. Menmuir, new pastor of First Christian Church, told members of the Torrance Lions Club at its meeting Tuesday noon in the Civic Auditorium.

The Rev. Mr. Menmuir, introduced by Frederick Cook, recently returned from a trip to Australia, his native country, made as a merchant seaman. He said that the fact that most of the fabrics produced on the island went into American uniforms caused a program of clothing rationing such as no American could imagine. "Can you see yourself with 62 points allowed for clothing a year, paying 30 points for a suit, 25 points for an overcoat, 15 points for shoes, and additional points for bed sheets, towels and other necessary items?" the pastor asked.

He declared that the American service men were welcomed to Australia with open arms, but that money in the hands of the pleasure-seeking Americans served to wear out that welcome in many cases.

The minister assumed the pastorate of the Christian church here last Sunday, coming from an Oakland church.

## Many Japanese Families Settle At Airport

Nearly 150 Japanese persons, comprising more than 50 families, were reported last night to be housed within the 16 barracks set aside by the War Relocation Authority for this purpose at the Lomita Flight Strip.

Carpenters, who have been repairing and dividing the barracks into cubicles, continue this work as more families are expected.

These Japanese, it was learned, are all formerly of the Los Angeles area and expect to find housing somewhere within the county.

The families are living the life of the army in many respects, cooking and eating in the mess hall and using the community wash room for their laundering. Some of the families talked to expect to be in places of their own before long. Others are sadly doubtful.

A 24-hour guard will continue to be maintained by the United States Engineering Department to protect government equipment and installations.

## Disqualification For Unemployment Insurance Clarified

Under a ruling announced today by Attorney General Robert W. Kenny, a worker is not indefinitely disqualified from obtaining unemployment insurance benefits because he refuses to accept suitable employment offers.

Kenny so informed James G. Bryant, Chief of the Division of Public Employment, today, pointing out that a person who had been so disqualified would only be ineligible to receive the payments for a four-week period.

The worker could, however, be disqualified again for another four weeks, but not for an indefinite period.

Howard Bender, USN, son of H. C. Bender, of 2318 El Dorado, has been promoted to CPO Yeoman at his base on the Atlantic Coast. The young Navy man has just completed a tour of duty in the Pacific, according to his father, who is employed at Torrance Municipal Water District No. 1.

## Bids Opened For Dominguez Channel Construction

According to Supervisor Raymond V. Darby, the Board of Supervisors at its Tuesday meeting opened bids for the excavation of Dominguez Channel and construction of appurtenant work between Arlington and Denker ave. near Gardena. The bids range from a high of \$152,400.50 to a low of \$41,695.00. The bids were referred to the flood control for checking and report back of their recommendations at the next meeting when the contracts will be awarded.

### HAROLD WOODMAN

Harold W. Woodman, boat-swain's mate, 1/c, USCG, received his honorable discharge Tuesday following about three years service. Mrs. Woodman, the former Betty Neelands and their 18 months old daughter, Patty Lou, live at 1752 Grandery ave. Woodman was employed in the Electrical Dept. at Columbia Steel Company before he entered service.

## Insurance and Pre-arranged Funerals

EVERY INTELLIGENT American today believes in life insurance. He purchases it to protect his family, without any superstitious fears. Pre-arrangement of the funeral has much in common with the buying of insurance. It protects the family from shouldering this added burden when the emergency arises. We shall be glad to explain our pre-arrangement plan without in any way obligating you.

Stone

AND  
**Myers**

FUNERAL DIRECTORS  
Since 1922  
CRAVENS & ENGRACIA  
Phone Torrance 195

### MARINE VISITS

William P. Davis, private, U.S.M.C., is enjoying a brief leave with his parents, Mr. and Mrs. S. L. Davis, of 3706 Emerald ave. Upon completion of six months' training at San Diego Davis was assigned to the U.S. transport General Randall. Pvt. Davis was graduated from Torrance high school.

### AWAITS DISCHARGE

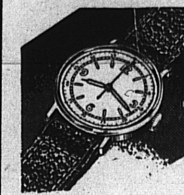
Odell W. Moorman, ship fitter, 1/c, USN, arrived Thursday from 20 months' Pacific duty and is awaiting his honorable discharge. Shipfitter Moorman has been in service for more than three years. His wife, the former Mildred Neelands and their daughter, Marcheta, live in Walteria.

## Just Arrived

Limited Number  
MEN'S FINE

## Military Watches

For your man in service or out in civilian life.



- 17 Jewels
- Sweep Second Hand!
- Luminous Dial
- Waterproof!
- Non-Magnetic!

**\$47<sup>50</sup>**  
TERMS

Here at the National Home you will find a complete selection of fine Gifts for every member of the family. Let us help you select a lifetime gift for any occasion.

LAY-AWAY FOR  
CHRISTMAS NOW!

Diamonds — Watches — Rings  
Crystals — Novelties

Friendly Credit

## NATIONAL HOME APPLIANCE CO.

HARRY M. ABRAMSON

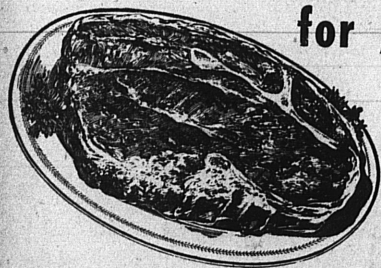
1317 Sartori Phone Torrance 78

# COMING!

# KIRBY'S

CALIFORNIA'S FAVORITE FAMILY SHOE STORE

## COMPARE THESE PRICES for A&P Quality Meats



Your A&P Super Market offers only the highest grades of meat obtainable. Compare these prices for Grade A cuts

of beef—you'll agree with the thousands who say: "For good eating at modest prices—turn to A&P!"

## PRIME RIB ROAST

7-INCH CUT

Chine Bone Removed

Grade A **29<sup>c</sup>** lb.

## POT ROAST

Chuck or Round Bone—Grade A.....

**25<sup>c</sup>** lb.

## STEAKS

Sirloin—Grade A.....

**38<sup>c</sup>** lb.

New York Dressed Poultry!

## ROASTERS and FRYING CHICKENS

Fancy Midwestern

Grade A **47<sup>c</sup>** lb.

Superior Certi-Fresh Fish!

Eastern Fillet Hake.....lb. 40c

Pacific Fillet Ling Cod.....lb. 43c

And Other Fine Sea Food Values!

Choose Coffee That's 5 Ways Better...



Exclusive A&P Values!

WHITE HOUSE Evap. Milk.....Tall 9c  
SULTANA UNPEELED Apricots.....No. 2 1/2 20c  
SULTANA Fruit Cocktail.....No. 2 1/2 29c  
ANN PAGE Grape Jam.....1-lb. Jar 18c  
ANN PAGE Boston Beans.....17 1/2-oz. Glass 10c

Butter Sunnyfield Grade AA.....lb. 51c

Fresh Eggs Olson Bros. Grade A—Large.....Dozen 66c

## CLOROX

BLEACH  
Quart Bottle 15c  
HALF GALLON.....28c

## PALMOLIVE

TOILET SOAP  
3 Cakes 20c  
(WHEN AVAILABLE)

Real Values in  
FRESH FRUITS  
and VEGETABLES

## Potatoes

U.S. No. 1 10 lbs. 37c

Russets.....

## Onions

Yellow.....5 lbs. 19c

## Oranges

Fine for 8 -lb. 45c

Juice.....Bag

## Apples

Washington 2 lbs. 21c

Jonathans.....

Wines & Liquors

SAN ANTONIO Dry Wines.....Fifth 59c  
SAN ANTONIO Sweet Wines.....Fifth 69c  
REISCHMANN Dry Gin.....Fifth \$3.21  
IMPORTED, 88-PROOF Marimba Rum.....Fifth \$2.55  
BLENDED WHISKY P.M. DeLuxe.....Fifth \$3.31  
SCHENLEY RESERVE Whiskey.....Fifth \$3.35

## RED STAMP VALUES

CALIFORNIA Grated Tuna.....4-oz. Can 25c  
DURKEE TROCO Margarine.....1-lb. Pkg. 23c  
FOR SALADS, COOKING Wesson Oil.....Quart Bottle 52c  
Flat.....27c

## FRUIT CAKE

3-Lb. Cake \$1.65 1 1/2-lb. Cake 85c

Jane Parker

"America's Favorite"

PRICES EFFECTIVE THROUGH SATURDAY

The Great Atlantic & Pacific Tea Company

1330 EL PRADO-TORRANCE

All Advertised Items Subject to Stock on Hand  
(TAXABLE ITEMS ARE SUBJECT TO TAX)



THE GREAT ATLANTIC & PACIFIC TEA

Not Rationed!

HYGRADE PARTY LOAF

Lunch Meat.....12-oz. Can 33c

ARMOUR'S LUNCHEON LOAF

Treet.....12-oz. Can 34c

VAN CAMP'S Tenderloin.....4-oz. Pkg. 7c

KERN Tomato Juice.....4-oz. Can 49c

HONEYMAID GRAHAM Crackers.....2-lb. Pkg. 32c

S & W PURE Apple Juice.....Quart Bottle 35c

TREESWEE GRAPESUIT Juice.....4-oz. Can 30c

CAMPBELL ASPARAGUS Soup.....No. 1 Can 12c

AUNT JEMIMA Pancake Flour.....2 1/2-lb. Pkg. 25c

QUICK OR REGULAR Quaker Oats.....3-lb. Bag 28c

KELLOGG's Krumbles.....9-oz. Pkg. 41c

GRANULATED Scotch Soap.....Giant Pkg. 40c

TOILET SOAP Mission Bell.....3 Cakes 14c

TOILET SOAP White King.....3 Cakes 14c

CASHMERE BOUQUET Toilet Soap.....3 Cakes 27c

SUNBRIT Cleanser.....14-oz. Pkg. 5c

FOR FINE LAUNDRY Linin Starch.....12-oz. Pkg. 9c

SWANSDOWN Cake Flour.....2 1/2-lb. Pkg. 25c

GOLD MEDAL Flour.....5-lb. Bag 31c

## IVORY SOAP

Medium Bar.....6c  
(WHEN AVAILABLE)

## DUZ

GRANULATED SOAP  
Large Package 23c  
(WHEN AVAILABLE)