

Self-Service LAUNDRY



23223 NARBONNE AVE.
(Follow Arlington, It Leads Into Narbonne)
PLENTY OF ROOM — PLENTY OF HOT WATER
OPEN WEEK DAYS — 8:00 A.M. to 7:00 P.M. — Sundays by Appointment
Phone Lomita 316-W

READ OUR WANT ADS . . . AND SAVE MONEY!

IMMEDIATE DELIVERIES WITHOUT PRIORITIES At Your Home Or At Any Job READY-MIXED CONCRETE

Modern high-discharge ready-mixed concrete trucks, manned by efficient, courteous operators, now available for all types of jobs, large or small. Telephone inquiries solicited. Our office will be glad to help you figure quantity of concrete necessary for your job. For deliveries in the Torrance, Gardena and Harbor areas phone Torrance 1522 or Torrance 1210.

Azusa Rock & Sand Company

Main Office—Azusa, California

Torrance Branch—1347½ 208th St.

(P. O. Box 604, Torrance) PHONE TORRANCE 1522 or 1210



YOU'LL BE
THANKFUL
THE REST
OF
YOUR LIFE

Our Prices on GLASSES

—are still those of
Pre-War Days!

Phone today for an Appointment tomorrow, Redondo 6045
FORMERLY M. L. KEMP.

Dr. G. E. Cosgrove

OPTOMETRIST

135 S. Pacific—Redondo Beach

KNOW YOUR AMERICA!



Now that the war is over. . . we'll see a return to good old-fashioned American politics. Out of the heat of just criticism usually comes the truth. That's why we like to have folks criticize us. . . that's the way we are able to correct and improve our service. . . that we may continue to keep young, healthy and grow with Torrance. We can be told . . . and we like it.

ANSWER

The American Whigs
(Turn Upside Down to Read)

"A FRIENDLY TORRANCE INSTITUTION"



TORRANCE
NATIONAL BANK

Torrance California

MEMBER OF FEDERAL DEPOSIT INSURANCE CORP.

Church Notices

NOTICE: Copy for Church Notices cannot be accepted after 10 a. m. Tuesday.

CENTRAL EVANGELICAL COMMUNITY CHURCH — H. Wesley Roloff, pastor, Marcella at Arlington. Phone 131. Sun. school, 9:30. Rally Day, Service, 11 a. m. Observance Park Worldwide Communion. Service, "Jesus Calls Us." Communion open to all. Service, 7:30 p. m. "Visions of God." Evangelical Youth Fellowship, 9:30 a. m. Prayer Fellowship, 7 p. m. Wednesday, Choir, Wednesday, 8:05 p. m. Ladies Guild, Oct. 10, 2 p. m. Mrs. Lester Smith, 1451 El Prado.

COMMUNITY PRESBYTERIAN CHURCH — Rev. J. E. Orr, 2154 54th St., Lomita. Phone 1724-W. Sun. School, 9:45 a. m. Wednesday, Registration, Service, 11 a. m. Worldwide Communion, Service, 7:30 p. m. "The Road of God in the Hand of Man." Communion for those unable to attend morning service. Christian Endeavor, 6:30 p. m. Prayer, Wednesday, 7:30 p. m. Choir, adult, Tuesday, 7:30 p. m. Youth, Thursday, 7:30 p. m. Spiritual Life groups Tuesday, 9:30 a. m.

MEN'S BIBLE CLASS — Meets at 7:30 Thursday evening in their hall opposite public library on Cravens ave. Men welcome. Rev. Reynolds, Hermosa Beach, preaching.

CHURCH OF JESUS CHRIST OF LATTER-DAY SAINTS — Bishop Raymond A. Lund, 155th and Normandie, Gardena. Sun. 10 a. m. Sunday school, Relief Society and priesthood. Sun. 2:30 p. m. Sacrament meeting, Wed. 7:30 p. m. mutual, Sat. 10:30 a. m. primary.

FIRST FUNDAMENTAL BAPTIST CHURCH — Walter H. Wagner, pastor, 10500 W. 105th St., Torrance. Sun. School, 9:45 a. m. Morning service, 11:00 a. m. Evening service, 7:30 p. m. Young People's Meeting, Thurs. 7:30 p. m. **FIRST BAPTIST CHURCH** — C. Miles Northrup, pastor, Carson and Marina sts. Tel. 148. Sunday school, 9:30 a. m. classes for all ages. Service, 10:30 a. m. "The Precious Blood of Jesus Christ." Service, 7:30 p. m. "The Remedy of Sin." Choruses and prayer service. Young People, 6:30 p. m. training groups for children and adults. Wednesday, 8 p. m. Prayer meeting and Bible study with Britton Ross, teacher.

SAINT ANDREW'S CHURCH — Protestant Episcopal, Engracia, between Arlington and Manuel, Redondo Beach. The Rev. Paul Moore, pastor. Phone 560. Sun. services, 9:30 a. m. Junior church and school, nursery dept. through senior citizens. Morning service and sermon, 6:30 p. m. Young Churchmen's League, 1st and 3rd Sundays, 8 a. m. Young men, 2nd Sun. Other services—2nd and 4th Thurs. 10 a. m. Holy Communion. Holy days as announced. Organizations — 2nd Mon. 7:30 p. m. Vestry; 2nd and 4th Wed. 8 p. m. Cecelia's Guild; 2nd and 4th Thurs. 1:30 p. m. Woman's Auxiliary; Last Thurs. 8 p. m. Altar Guild; Fri. 7:30 p. m. Gardenia Episcopal Guild. St. Andrew's Church sponsors Boy Scout Troop No. 241, Cub Pack No. 241, Girl Scout Troops No. 416 and No. 74.

FIRST PRESBYTERIAN — Rev. S. Martin Eldsath, pastor, Gardena Blvd. at Manhattan Rd., Gardena. Phone ME 4-1064. Sunday school, 9:45 a. m. Service, 11 a. m. "Followers of One Master." This is World Wide Communion. Sunday, all members and friends are urged to be present. Young People, 6:30 p. m. Westminster Fellowship.

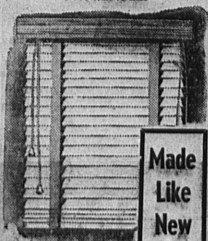
FIRST CHURCH OF CHRIST SCIENTIST — 212 218th St. and Manuel ave. Sunday morning service at 11. Sunday school, 9:30 a. m. Wednesday evening meeting, 8 p. m. Reading room at 1750 Manuel ave. 11 a. m. to 4 p. m. each week day.

The Golden Text of the Sunday Lesson—Sermon on "Unreality" in all branches of The Mother Church. The First Church of Christ, Scientist, in Boston, is chosen for the Psalms and reads: "Thou art my portion, O Lord. . . Through thy precepts I get understanding: therefore I hate every false way."

These selections from Proverbs will be included in the Lesson—Sermon: "There is that maketh himself rich, yet hath nothing: . . . A good name is rather to be chosen than great riches, and loving favour rather than silver and gold. . . Labour not to be rich: cease from thine own wisdom. Wilt thou set thine eyes upon that which is not? for riches certainly make themselves wings; they fly away as an eagle toward heaven."

In the Christian Science textbook, "Science and Health with Key to the Scriptures" Mary Baker Eddy says: "Sensual treasures are laid up where moth and rust doth corrupt. Mortality is their doom. . . Falsehood, envy, hypocrisy, malice, hate, revenge, and so forth, steal away the treasures of Truth."

NEW VENETIAN BLINDS AVAILABLE!



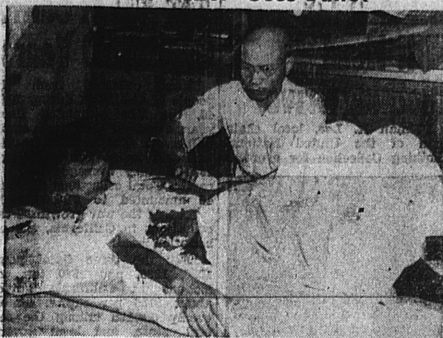
Made
Like
New

Repaired Repainted
New Cords and Tape

Call Redondo 8570

BAY CITIES
VENETIAN BLIND CO.
1402 Camino Real Hermosa

'The Razor' Uses Bullet



Though he claimed he wanted to die, General Hideo Tojo is recovering from an unsuccessful suicide attempt because of a blood transfusion from a Yank soldier. He shot himself as officers came to his Tokyo home to arrest him as the prime war criminal.

Keep To Right, Highway Patrol Chief Warns

"Pull over and let the traffic go by!" This plea was broadcast today by E. Raymond Cato, Chief of the California Highway Patrol to the trucking interests, drivers, and motorists generally. Pointing out that highway congestion has greatly increased since the removal of gasoline rationing, Chief Cato said he is receiving numerous complaints that slow moving vehicles, particularly trucks and tractors, are obstructing traffic by causing long lines of vehicles to pile up behind them.

Such drivers should use the first opportunity to pull over as far as possible to the right and let the traffic pass, he explained. Commercial vehicle movements are now heaviest in California history, he said because of continued shipment of war materials and renewal of peacetime activities. "It will be unnecessary to exercise arbitrary measures authorized by the Vehicle Code if the drivers cooperate," Chief Cato said.

Lord, what a change within us one short hour Spent in thy presence will avail to make! What heavy burdens from our backs have taken! What parched grounds refresh as with a shower! —Richard C. Trench



HOW TO MAKE LIFE EASY FOR YOUR TRACTOR

To cushion operating shocks on your tractor's track roller bearings . . . to seal these vital bearings from dust and mud . . . use RPM Tractor Roller Lubricant! It flows freely yet resists displacement — is especially compounded for this tough job. Covers every inch of bearing surface with a resilient protective film. You can't afford to do without it!

C. B. MITCHELL

CABRILLO AT CARSON
PHONE 765

S. DAVIS

2074 LOMITA BLVD.
LOMITA, CALIF.

Your local representative for
STANDARD OF CALIFORNIA

Don't Buy Your SHOES Now

WAIT

For

RBY'S

Mariner's Medal Presented Widow

Mrs. Helen Noble and her three children, 320 W. 10th St., Los Angeles, were awarded a Mariner's medal, the highest award a merchant seaman can receive, in honor of her husband, Robert T. Noble, who lost his life on Dec. 28, 1944, in the Philippines when his boat was attacked by enemy aircraft. Noble received his training in Avalon, graduating with highest honors in his section. The deceased is a son of Mrs. Jack Kesson, 1815 W. 182nd St. He has two sisters in service, Gloria Noble, Seaman, 1/c, WAVE, stationed at San Diego and Cpl. Joyce Noble Farquhar, WAC, on duty in Manila, P. I.

RETURN TO TORRANCE

C. P. O. John T. Weigand and Mrs. Weigand have returned from his base at Maryland to make their home in Torrance. Former Torrance residents, they are guests now at the home of Mrs. E. G. Melz, of 1740 Andreo ave.

The joys of heaven will begin as soon as we attain the character of heaven and do its duties. —Theodore Parker

TILE

CONTRACTING

- Remodeling
- Interior Tile
- Bathrooms
- Drainboards

No Priority Required.
Expert Workmanship.

E. G. COLLINS

Tile Contractor
PHONE TORRANCE 1145-J

PAINT that LOOKS TWICE the PRICE!



Kem-Tone



MONEY CAN'T
BUY A FINER
FLAT WALL FINISH

Only \$2.98—the price of one gallon of Kem-Tone—does the average room . . . gives walls a rich, handsome finish that wears wonderfully, cleans beautifully! Kem-Tone the amazing oil and resin paint covers wall-paper, painted walls, ceilings with one coat . . . dries in one hour . . . leaves no "painty" odor.

KEM-TONE ROLLER-KOATER
Rolls Kem-Tone over walls—quickly, easily! 89¢
KEM-TONE BORDER TRIMS
Smart wall trims—pre-pasted, washable! 15¢

Ask your Kem-Tone dealer for FREE demonstration!

WORLD-FAMOUS SHERWIN-WILLIAMS PAINTS

LIKE NEW AGAIN!

... Easy with Sparkling,
1-Coat

SHERWIN-WILLIAMS
ENAMELOID

Here's the easy way to give shabby woodwork, furniture, toys sparkling new life! One coat of this fine enamel flows on smooth, easy . . . dries hard to a brilliant finish . . . resists scratching, chipping, staining. 14 handsome colors! \$1.65 qt.



3 GREAT HOME BRIGHTENERS

Lix CLEAR GLOSS
smooth, flowing varnish—brush on — for glistening beauty. Durable film adds luster — protects finest floors. \$1.70 qt.
Lix CREAM POLISH
non-sticky furniture polish — adds rich luster to wood — cleans and protects from fingerprints and dirt. 69¢ pt.
Lix SELF POLISHING WAX
easy to apply — adds luster to wood — emphasizes color of linoleum floors. 59¢ pt.

SHERWIN-WILLIAMS PAINTS

TORRANCE BRANCH

1623 Cabrillo — Phone 2147-W

★ SOLD BY ALL S-W DEALERS ★