

Edison Company Closes Saturday; On 40-Hour Week

The return of the Southern California Edison Company to the peace time forty-hour week was announced today by C. C. Bartlett, district manager for the company.

To effect this the Edison district office in Redondo Beach and the local offices in Hermosa Beach, Gardena and Torrance will be closed all day Saturdays, Bartlett said.

At the beginning of the war, the Edison Company, like other major industries of the nation, extended its working schedule to meet war-time demands. The return of the company to the former forty-hour week, but with the elimination of Saturday office hours, is in conformity with the program of federal offices and other industries.

TO SAN FRANCISCO

Reno Langstaff, of Torrance Flower Shop, returned this week from several days' vacation in San Francisco. Mrs. Langstaff had enjoyed a brief vacation earlier in the season.

NEW TILE CONTRACTOR

E. G. Collins, tile contractor, is opening a branch office in Torrance. Equipped to do all types of tile work, his main office is at 2326 Lucerne ave., Los Angeles.

38 Members Initiated Into VFW Post Here in Big Public Program

With California Department Commander Richard H. Newhall, of San Francisco, participating, 38 veterans were inducted into Post No. 3251, Veterans of Foreign Wars, Monday night.

Arranged by Commander C. Earl Conner as one of the rare public initiation parties, several hundred Torrance area residents witnessed the affair staged by the drill team from Inglewood Post No. 2122, in the Civic Auditorium.

Among the 38 veterans initiated, 12 were holders of the Order of the Purple Heart from World War II. One was a veteran of the Spanish-American War, two veterans of the Mexican campaign and the balance of the two world wars.

It was the largest class ever installed in the Torrance post.

Also attending and participating in the evening's program were Senior Vice Commander Charles P. Ash, Glendale; Department Historian Frank Hess, of Pasadena; Immediate Past Department Commander Rollo McFall, Los Angeles. The auxiliary of the California department was represented by Mrs. Rollo McFall, historian, and Mrs. R. H. Newhall, junior vice president.

An entertainment program, dance and refreshment period followed the initiation.

Floyd Robertson Discharged At End of 36 Months

Pfc. Floyd W. Robertson, son of Mrs. Julia A. Folks, 20619 Elliot ave., Torrance, has received his honorable discharge from the Army at Torrey General Hospital, Palm Springs, California, where he has been hospitalized for the last five weeks. Pfc. Robertson reported for duty with the armed forces October, 1939 and trained at Fort Totten, N. Y.

As a gunner with Battery "A," 893 AAA. A. W. B. he served in England, N. Africa, Sicily, Italy, France, and Germany for 36 months, participating in 5 major campaigns.

Pfc. Robertson has been awarded the following decorations: American Defense Ribbon, European, African Middle East; and Good Conduct.

RESURFACE FLOORS

Contract for refinishing of hardwood floors in various buildings, at Torrance high school has been awarded P. A. Stith.

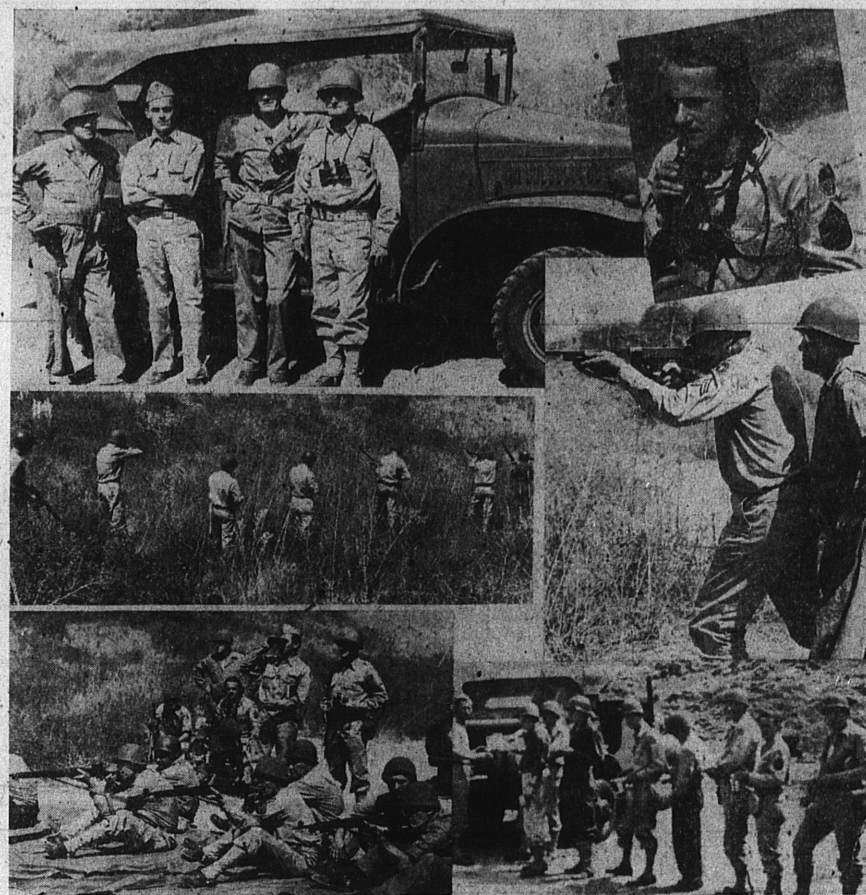
Dominguez Channel Work Bids Are Asked

The Board of Supervisors at Tuesday's meeting, on motion of Supervisor Raymond V. Darby, authorized advertisement for bids for the excavation of Dominguez Channel and construction of appurtenant works between Arlington street and Denker avenue in the neighborhood of 174th street and Western avenue. This project is a continuation of the construction of the minimum relief channel for Laguna Dominguez. The necessary right of way is now owned by the Flood Control District and it is estimated that the construction will cost in the neighborhood of \$128,000, funds for which are provided in the budget for the present fiscal year.

This improvement will be followed by the erection of a new bridge on Western avenue which will permit of the widening of Western avenue at this point.

J. L. POPE HOME

Completing an air trip from India, and starting a 30 day furlough here with his parents, Mr. and Mrs. Floyd Pope, Pfc. J. L. Pope arrived Sept. 14 to relate further adventures with the India China Division, U. S. Army Air Transport Command.



STATE TROOPS IN TRAINING... With the close of the war, the importance of maintaining a body of well trained state troops has been magnified many times over, according to military leaders, and to this end the members of the California State Guard engaged in intensive training last weekend in remote sections of Palos Verdes Hills. Illustrating types of equipment and training methods employed, the above group of pictures was taken during the maneuvers. Upper left are Capt. C. C. Church, commanding Co. A, 2nd Battalion, 39th Regiment; Lt. G. R. Martin, battalion adjutant; Lt. Tom Ramskill, Co. H, and Lt. Fred E. Barritt, Co. A, beside a command car supplied by the Army to the State Guard. Also provided are heavy trucks,

jeeps, motorcycles, squad cars and other vehicles. Upper right is Staff Sgt. C. M. Self with field telephone being operated at the target range. Center left, a group of State Guardsmen are advancing on Hill "X," in a skirmish line. Center right, Corp. Al Farnen takes a bead on the manually operated target with a Thompson sub-machine gun, as Capt. Church observes. Lower left, members of Co. A and Co. H in practice with U. S. rifle, Cal. .30. Lower right, the best of the day's maneuvers, chow line with hot rations served from field kitchens. Recruits from ages 17 to 55 are taken each Monday night for enlistment in Co. H in the armory at Torrance ball park.

(Official C.S.G. Photos)



IS YOUR COFFEE 5 WAYS BETTER?

1. SUPER QUALITY
2. "FLAVOR-SAVER"
3. SOLD IN THE BEAN
4. CUSTOM GROUND
5. A BLEND TO SUIT YOUR TASTE



A&P COFFEE IS!



1 LB. BAG 21c 1 LB. BAG 24c 1 LB. BAG 26c

Fresh Fruits & Vegetables!

For nature's good things at their flavorful best, shop at A&P! Choose from a colorful array of juicy fruits and tender, young vegetables. Fill your market basket with real value at A&P!

Tokay Grapes

RIPE, FIRM DELICIOUS 2 LBS. 19c

Lima Beans Tender, garden-fresh 2 lbs. 29c

Utah Celery Crisp, fancy 10c

Yellow Onions 3 lbs. 14c

Tender, Sweet Fancy Yams 2 lbs. 19c

RIPE, JUICY Lemons 5 lbs. 49c

Power Costs Responsible for Closing Torrance ALCOA Plant, Report Says

Torrance's Defense Plant Corporation unit operated by Aluminum Corporation of America was closed in August, 1944, mainly because of power and labor costs, Attorney General Tom C. Clark asserted in Washington Monday in recommending that ALCOA be split up into a number of companies. "Monopoly was a burden on war production," Clark asserted.

To resume production, and stay in operation, Clark's report pointed out, the Torrance plant probably would need an integrated and nearby source of alumina, cheaper power and better labor conditions than prevailed during the war period.

It was known here that the cost of Los Angeles electric power was largely responsible for the closing of the big Torrance plant, but Clark's report was the first official acknowledgment of the fact. Many casting foundries and some independent extrusion facilities exist in the Los Angeles area, it was noted, and "some outlets" exist for aluminum ingot. Need for an alumina plant on the West Coast was stressed "because the rail haul from the Midwest is too costly for postwar operation."

The recommendation that ALCOA be split up made in a report to Congress, was promptly and vigorously challenged by the company which said, in a statement issued at Pittsburgh that such a dissolution would destroy millions of dollars in property values owned by small investors, insurance companies and religious, charitable and educational institutions.

Demanding Competition Clark asserted that competition in the aluminum industry is necessary for national security, as well as prosperity, because expansion for war needs was hampered by the fact that there was only one experienced company in this strategic field.

The only solution, he said, lies in "the split-up of Alcoa into a number of competing companies." He said that competition could not come automatically because, "during half a century of monopoly, Alcoa has accumulated many special privileges." Independent enterprise, he added, could not overcome Alcoa's "aggregation of advantages in haughty and power supply, plant locations, market and financial strength, and connections with foreign producers." He pointed out that Alcoa

controls, through ownership or lease, more than 30 per cent of the aluminum industry's productive capacity. Reynolds Metals Co., Alcoa's only competitor, is dependent upon Alcoa for much raw material, he said.

He warned that prompt action is imperative because "inaction would continue to promote monopoly." The aluminum industry can be many times as large as before the war, but only if competition is "firmly and unmistakably established," he reported.

The Second Circuit Court of Appeals, sitting last March in lieu of the Supreme Court, held that Alcoa was a monopoly in violation of the antitrust laws, but did not recommend dissolution because of uncertainty as to postwar conditions after the sale of government-owned plants.

Key To Lower Prices The Supreme Court could not get a quorum to rule finally on Alcoa because so many of its jurists had previously been identified with the case.

Two Torrance Firemen Aid In Child Recovery

Captain Roy Winters of the Torrance Fire Dept., was reported to have been instrumental in saving the life of a 27 month old baby, Stanley Williams, son of Mr. and Mrs. Fred Williams, C. C. M. O. camp house No. 13, last Sept. 13.

The parents of the child called the Torrance Fire Dept., when their baby, a cyanotic, suffered an attack. Winters, assisted by Engineer R. E. Moffitt, responded to the call and rendered oxygen to the stricken child for nearly an hour.

Captain Winters reported the child near death when he and Moffitt arrived, with a pulse too quick to count.

PLEADS GUILTY

Noah J. Spicer, 22626 Normandie ave., pleaded guilty to drunk driving and hit and run before Visiting Judge E. L. Morris Sept. 14. Spicer was fined \$150 and given a sixty-day suspended sentence. Also he was ordered to make restitution to the Barnsdall Oil Co. in the amount of \$55 for damages to their vehicle, hit by Spicer's car.

Good News!

Just Arrived, Ten Dozen

RIB KNIT ATHLETIC SHIRTS

ALL SIZES FIRST COME, FIRST SERVED

50c

LIMITED SUPPLY OF GENUINE REIS

Scandal Shorts

The Best In Nationally Advertised Men's Wear

Torrance Men's Shop 1325 Sartori Torrance

* Arrow Shirts * Stetson Hats * Cooper Underwear * Westminster Hose * Botany and Cheney Ties * Rogue Sport Shirts * Rabhor Robes

Wines & Liquors
PIUMA SEVEN-STAR Sweet Wines \$1.11
PIUMA SEVEN-STAR Dry Wines \$1.82
DIXIE BELL Dry Gin \$1.97
IMPORTED Hart Rum \$1.12
PRINCE GEORGE BLEND Whiskey \$2.15
THREE FEATHERS RESERVE Whiskey \$3.95

SUNNYFIELD Butter Gr. AA 1 lb. 51c
MARGARINE Parkay 1 lb. pkg. 25c

FRESH EGGS
Golden West Large, Grade A doz. 66c
Olson Tru-Blue Jr. Medium, Grade AA doz. 60c
Olson Countryside Small, Grade A doz. 50c

LUX FLAKES
Large Package 23c (When Available)

Prices Effective Through Saturday

Top Values at A&P!
Heinz Soup Green 11-oz. 12c
Graham Crackers 1-lb. 17c
Hunt Tomato Sauce 1-lb. 5c
S&W Apple Juice 1-qt. 35c
Cottage Cheese Kraft, Country Style, 1-lb. 24c
Campbell's Soup 1-lb. 11c
Heinz Vinegar Pure 1-qt. 18c
Large Prunes Magnolia 2-lb. 27c
Durkee Sauce Worcestershire 8-oz. 10c
Gold Medal Flour 10-lb. 60c
Shreddies NBC 12-oz. 13c
Clapp's Baby Food 2 1/2-oz. cans 13c
Larsen Veg-All 1-lb. 15c
Woodbury Facial Soap 3 Cakes 23c
Sunbrite Cleanser 14-oz. 5c
Grapefruit Juice True-Sweet 4-oz. 30c

RED STAMP VALUES

Nucoa Margarine 1-lb. 26c
Lunch Meat Honey 12-oz. 33c
Grated Tuna California 4-oz. 25c
Deviled Meat Libby 3 1/2-oz. 6c

RINSO Large Package 23c GRANULATED SOAP (When Available)

All Advertised Items Subject to Stock on Hand

The Great Atlantic & Pacific Tea Company

1330 EL PRADO - TORRANCE

PRICES EFFECTIVE THROUGH SATURDAY (TAXABLE ITEMS ARE SUBJECT TO TAX)

SWAN SOAP
3 Large Bars 29c (When Available)

In Our Meat Dept.

A&P offers only the very finest meats obtainable, carefully graded, brought to you at A&P's always lower prices.

LAMB LEGS
GRADE AA OR A 3.8c

Grade A Fowl 43c

Lamb Shoulder 27c

Rib Roast 32c

Pot Roast 27c

Chuck or Round Bone 25c