

Navy Recruiting Stations Open Drive To Enlist Men 17 to 30 as Regulars

Navy Recruiting Stations all over the country are initiating an all out drive for voluntary enlistments, particularly in the Regular Navy, among men in the age group of 17 to 30 inclusive, who are now eligible by Executive Order of President Truman. This order lifts the ban against voluntary enlistments in draft ages.

The Navy recruiting drive is designed to speed demobilization of men with long war service, to reduce the Navy's calls through Selective Service and at the same time to enable the Navy to fulfill its extreme responsibilities through the transition period and beyond.

During August, despite the ban on recruiting men between the draft ages of 18 and 37 inclusive, the Navy enlisted more than 16,000 men in the 17-year age group, with parental consent. Of this number, 6,300 joined the Regular Navy and the balance entered the Naval Reserve.

Now that the bars are raised permitting the Armed Services to reach into the draft age group for voluntary enlistments the Navy is endeavoring at least to triple the August figures in coming months.

Men who have not been in uniform as well as those recently discharged through the Army and Navy demobilization plan are sought through this recruiting drive. Navy spokesmen announced that already a number of World War II veterans are signing up for the Regular Navy. It is anticipated that this number will greatly increase as the demobilization program progresses. Navy officials point out that such further service is solely a matter of voluntary action on the part of those who want to follow the Navy as a peacetime career. Many veterans have embraced this opportunity after spending long awaited furloughs and leaves at home.

The term of enlistment in the Regular Navy is now reduced from six years to four. Physical standards are lowered in the light of war experience. Men changing to the Regular Navy from the Naval Reserve and men reenlisting in the Regular Navy not only retain their rights to mustering out pay, but also are entitled to full credit for past active duty, a special cash reenlistment bonus, and up to sixty days' leave at home.

UNEMPLOYED PAY

Proposed federal extension of unemployment compensations to \$25 a week to all unemployed in the nation would tend to increase rather than decrease the number of persons unemployed, the merchants and manufacturers association warned.

Nearest Adult Classes Are at Redondo Beach

The Redondo Union Evening School opened the fall term of the day and evening classes Sept. 10, according to Raymond W. Jones, principal.

Evening Classes include: Aeronautics, art (fine), arts and crafts, badminton, band practice, bookkeeping and business machines, citizenship, drafting and mechanical drawing, English, knitting, lipreading, machine shop, mathematics, photography, piano, physical education, pottery, shorthand, typewriting, upholstery, welding, wood shop.

Special Day Classes: Arts and crafts, clothing, cosmetology, knitting, lipreading, pottery, upholstery.

A 25c registration fee is charged at the time of registration in these classes. In classes where school supplies are used an additional fee of \$1.00 is charged.

Further information may be obtained by calling Redondo 8585.

Los Angeles city schools are conducting no adult classes in or near Torrance and Lomita, the nearest being Banning high school, Wilmington, and San Pedro high.

New Factories Locate In L. A. County Areas

Forty-three eastern and mid-western manufacturing companies purchased property in Los Angeles County during the year for purpose of erecting their own plants.

Thirty-one have determined to expend \$17,075,000 for real estate and equipment, and will furnish employment to 18,000 workers at start of operations. Hundreds of inquiries from nationally known manufacturers are being made. Three widely known companies are studying the coast, with plans for large branch plants. These plants would compare with the largest in the area.

Government is a trust, and the officers of the government are trustees; and both the trust and the trustees are created for the benefit of the people.

—Henry Clay



AFTER THREE YEARS
Thousands upon thousands of children and families in the Philippines are in sore need for food, clothing and medical care. Philippine War Relief, supported through your contributions to the Los Angeles Area Victory Chest, is sending relief supplies in ever increasing amounts to help in the rehabilitation of these civilian victims of Japanese oppression.

Bixby Slough Drainage Plan Is Withdrawn

Withdrawal of Federal aid in the amount of \$150,000 and of a proposed Union Oil Co. contribution of \$50,000 toward construction of a storm drain in the Bixby Slough and Downing st. area has resulted in the Board of Public Works rejecting all bids.

The lowest bid was \$461,123 and was considerably above the estimate, but the loss of \$200,000 outside aid, which had been expected leaves the board with insufficient city funds to proceed with the drainage project. Other financing arrangements must be made before calling for more bids, it was stated.

Bixby Slough is a part of the site proposed for a Los Angeles harbor district junior college. The territory also is dotted with oil wells, and Rolling Hills interests are seeking to induce the Los Angeles Board of Education to locate the college on a beautiful site in East Rolling Hills.

Unemployment Insurance Scope Widened

Unemployment insurance coverage has been widened to hold liable all employers of as many as one person with a payroll of \$100 or more per quarter, it has been announced.

Beginning Sept. 16, unemployed workers will have to wait only one week instead of two to collect unemployment insurance.

Beginning Jan. 1, 100,000 new firms, employing about 200,000 workers will be brought under unemployment insurance coverage.

Beginning Sept. 16 unemployed workers may be disqualified for unemployment insurance on five new grounds: leaving work voluntarily and without good cause, discharge for misconduct in connection with an employer's most recent work, wilfully making a false statement or failing to report a material fact, refusing to accept suitable employment without good cause.

Previous grounds for disqualification, which remain in effect, are inability to work, being unavailable for work, and leaving work because of a trade dispute. In these instances, the disqualification is removed, then the ground ceases to exist.

Penalties range from one week's to permanent disqualifications.

The act which goes into effect Sept. 16 provides a uniform five-weeks' penalty. Of 18,482 jobless workers who reported the U. S. Employment service last week, 11,058 were referred to jobs, Raymond Krah, acting director of the war manpower commission, said.

Although closing war plants added 6000 to the jobless list last week, applications for jobless insurance declined, Krah added.

DISPLACED WORKERS
In a new move to find jobs for thousands of displaced war workers in Los Angeles county, questionnaires have been placed in the hands of business and industry by the recently organized Citizens' Reconversion Council.

INCOME TAX

Income tax payments totalling \$3 million dollars must be paid by Sept. 15. Over 240,000 bills for the third quarter installment of 1945 have been placed in the mail.

Penney's
J.C. PENNEY CO. INC.

1261 SARTORI AVE.

Torrance

Leather or Not

YOUR FALL HANDBAGS FROM PENNEY'S ARE A COSTUME TREAT

It may be leather—or it may not, but you'll always delight in beautiful, new-as-tomorrow styling, a gleaming clasp, the versatile day-to-date look a Penney handbag gives your every costume!

2.98
4.98

I'll Wear My Suit

Whether we're going shopping, to luncheon, or out for the evening, I'll wear my suit! It's my wardrobe standby because it's so easy to wear, simple to care for... and always looks so right! Twill or all-wool suits in a variety of styles. Black and colors.

24.75
29.75

NEW PATTERNS
featuring
EARTH and SKY

Hand-Painted Tiles



TOWNCRAFT* TIES

Beautiful anytime, very appropriate now — birds in flight, tumbling leaves, horses and hounds. Artfully done on rayon dobby check!

Royal Blue Maroon
Light Royal Brown
Light Brown Green
* Reg. U. S. Pat. Off.

They Make Your Suit

do what you want!

BLOUSES

2.98

A frilly blouse makes a suit the proper thing to wear to tea — and a tailored blouse will make it right for daytime occasions. Long sleeves, short sleeves, collars or not, bows and ties in matching or contrasting shades. Cottons and rayon crepes in white and colors.

FOR MEN
Towncraft* DeLuxe Oxfords, Goodyear Welt Construction.

4.79

Shoe Value —

A BIG THING IN PENNEY SHOES

A Big Thing in Penney Shoes!
Value feature No. 1 — leathers, sturdy, supple. Value feature No. 2 — construction, the very best. Again that fortunate combination of strength and flexibility! Value feature No. 3 — style, in step with the times!

FOR BOYS
Jim Penney* Shoes for school, sports.

2.98

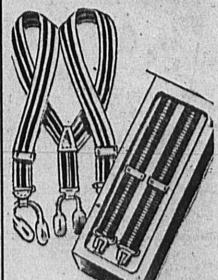
* Reg. U. S. Pat. Off.



PREFERRED FOR AUTUMN! SPORT FELT

4.98

A hat you'll take genuine pride in wearing, whether with rugged tweeds or dignified business suits. Good fur felt in five soft shades, bound edge, medium width band, attractively shaped.



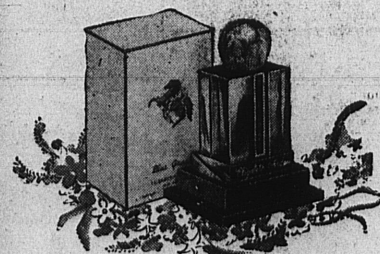
THEY STAY SECURE! MEN'S SUSPENDERS

98c

Clip-on and button-on suspenders for men who want to be sure of good grooming — in better webs and solid leathers. And they have a good elastic backpiece for solid comfort.

REDUCED! All-Metal DUST PANS

Ceiling price 39c. REDUCED TO SELL AT ONLY... EACH 19c



You're in Good Company When You Use

Blue Grass
Elizabeth Arden

Some of the smartest women in the world use BLUE GRASS perfume exclusively... use it in everything from extract to salts and sachet... wouldn't dream of having any other fragrance. These are the women you see wearing chic clothes on important occasions... the women who are news... who can have what they please and prefer the best. Why not join them with BLUE GRASS today?

BLUE GRASS PERFUME, 3.75 to 60.00
a plus factor

TORRANCE PHARMACY

1411 Marcelina — Torrance

NEW ARRIVALS — READY FOR SELLING FRIDAY AT 9:00 A.M.

NEW SPUN RAYON PRINTS yd. 69c
In fall colors and patterns. Fast to washing. 36 inches wide and priced to sell at the low price of

5% WOOL DOUBLE BLANKETS pair 3.98
In new colors and large size, 72x84 inches. Weight 4 1/4 pounds. A scientific blend of wool and cotton

72 x 108 SHEET BLANKETS ea. 1.74
Extra quality white cotton.

81 x 99 SHEET BLANKETS ea. 1.79
All American cotton in white.

39-INCH PANNE SATIN yd. 59c
Lovely. In pink, white, black, peach, rose and blue.

MEN'S HEAVY WEIGHT SWEAT SHIRTS 1.05
In silver grey.

MEN'S WHITE BROADCLOTH SHIRTS 1.98
In sizes 14 to 16 only.

MEN'S COTTON LISLE WORK SOCKS pr. 25c
Sizes 10 to 12. Black only.

MEN'S CANVAS WORK APRONS ea. 59c