

## Y.M.C.A. Camp Open to Boys Of Torrance

Camping under the auspices of the Torrance Y.M.C.A. is being made available to any boy ages 9 through 16 in the Torrance area during a week period of August 21 through 28. Registrations have been running high but a few vacancies still remain.

The Y.M.C.A. Camp, Round Meadow, is located near Barton Flats in the San Bernardino Forest above Redlands at an altitude of 6300 feet. This high mountain camp, completely equipped, offers a live-wire opportunity for outdoor living and camping experiences. Besides a strong athletic, swimming, and outdoor game program, there is ample opportunity for archery, horseback riding, hiking, nature crafts, handicrafts, camp fire, etc.

"Every precaution is taken for the health and safety of campers," Y. Secretary Ted Meier said. "A graduate nurse is resident in camp. Hikes, swimming, and all the activities are under constant supervision."

The Y.M.C.A. considers trained, mature leadership most important to a successful camp program, besides specialists in swimming, nature and handicrafts lore. The staff is supplemented by volunteer counselors from the community.

Those serving on the camp staff in Torrance include: W. E. Bowen, Frank Dominguez, Don Hartman, Larry Miller, Bill Stanley, Gerald Godard, Kenneth Kesson, Bud Smith, Don Cook and

## Walterian's Father Given Birthday Party

The 75th birthday anniversary of John A. Powell of Wilmington, father of Mrs. Achsa Newton of Walteria, was celebrated Sunday when members of the family gathered at the Powell home in Wilmington. Powell, resident of the Harbor district for 25 years, was an Idaho and Oregon pioneer.

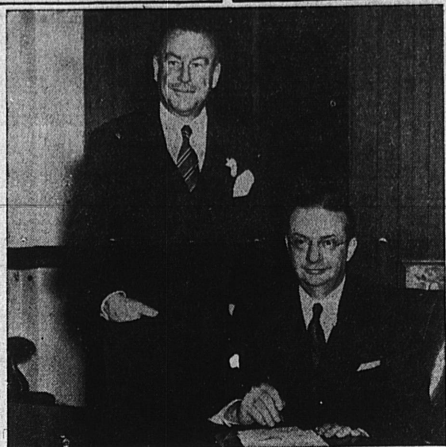
Those honoring him included son Raymond Powell and wife and daughter, Nancy of Whittier; son-in-law and daughter, Mr. and Mrs. Fred Scherf and sons, Fred Jr. and John Powell Scherf, Whittier; Mr. and Mrs. Edsel Newton and daughter, Sally; and son, Raymond Edsel of Walteria and Mrs. Rose Wilson of Long Beach.

## Mother, Children Have Trip Inland

Mr. and Mrs. W. M. Schildmeyer and children, Maxine, Charles, Marlene and Diane, 1938 W. 282nd st., Lomita, have returned from a two weeks vacation at Twin Peaks in the San Bernardino Mountains.

It was an ideal vacation, Mrs. Schildmeyer declared. A day's outing at Big Bear Lake and ice cream and cake was included as a birthday celebration for Diane.

Bill Jackson, Meier, who has been active in Y.M.C.A. camping for the past 17 summers, will be camp director.



C. S. Beesmyer, left, widely known as president of the former Gilmore Oil Company, has been named Vice President and Director of Marketing of the General Petroleum Corporation. He succeeds A. H. DeFries, right, who has held this post for several years. DeFries has been named Assistant to the President of Socony-Vacuum Oil Company and goes to New York City.

## Benefit Navy Mothers Club

Mrs. V. T. Pullman of Torrance will be chairman for the public card party to be sponsored by the Navy Mother's Club tomorrow night at the V. F. W. hall on Lomita blvd.

Pinochle, 500 and bridge will be played with prizes offered and refreshments at the close of the games.

## Local Girls With Campfire Girls At Wrightwood

Miss Kay Kunich, daughter of Mr. and Mrs. P. Kunich, 25407 Fejoa ave., and Miss Marion Mitchell of Long Beach, formerly of Lomita, are acting as Girls' counselors at the Campfire Girls' Camp Hemohme, at Wrightwood for the summer.

## More Blood Donors Needed For Aug. 10

"Two hundred more donors are desperately needed for our next Blood Bank Day, August 10, from 1 p.m. to 5 p.m."

So stated Mrs. O. A. Kresse, Blood Bank chairman for the Torrance American Red Cross branch.

"Please phone for your appointment," Mrs. Kresse urges. "A pint of your blood today may mean 'his' life tomorrow."

The Torrance Blood Bank is conducted in the Civic Auditorium, adjoining the local American Red Cross headquarters.

"In this, the crucial year of the war, thousands of our fighting men will fall, some dead, some wounded. It is reassuring to know that 97 per cent of the wounded men can be saved. They can be saved by those of us here in this country who will give our blood for them, as they are giving their blood for us."

Call Torrance 1524 now for appointment to give blood on Friday, August 10, from 1 to 5 p.m.

## Successor to Priest Moving To Parish Here

Rev. William McGinley, Lomita's newly-assigned Catholic priest, this week was moving to the local parish following the departure of Father Thomas Barry who has been assigned to Presentation Parish, Los Angeles.

Father Barry, the priest often seen having his meals in the corner drug store, leaves many friends here. His resourcefulness is credited with the building up of the parish.

Fifty parishioners attended a recent party for Father Barry at the rectory with Mrs. Sarah Litton as hostess and B. J. Gannon, oldest parishioner, presenting a purse to the departing priest.

Rev. McGinley comes here from St. Francis de Sales Church, Studio City.

Business, professional or personal cards are readily obtainable at the Torrance Herald office. Phone Torrance 444, 443.

THERE'S A FAMOUS CALIFORNIA MADE



100% PURE OUTSIDE PAINT. ALL COLORS INCLUDING WHITE. KOVER-COAT Flat Wall Paint. \$2.50 ONYX ENAMEL High Gloss \$3.00 90¢ QT. Several colors. . . . Gal. White & Ivory, only . . . Gal. \$3.00 Gallon

FAMOUS ATLAS PORCH AND DECK PAINT ALL COLORS . . . 90¢ QT.

FAMOUS ATLAS KOVER KOTE FLAT WALL PAINT Washable. All colors. . . 75¢ QT.

FAMOUS ATLAS PLASTER SEAL Qt. 80¢

FAMOUS ATLAS ENDURO-LITE 4-HOUR ENAMEL All colors. QUART 95¢

FAMOUS ATLAS ONYX ENAMEL High gloss. All colors. . . 90¢ QT.

FAMOUS ATLAS Paste Wood FILLER Qt. 70¢

FAMOUS ATLAS PURE OIL COLORS Double Strength—All Colors 35¢ 1/2 PINT

Complete Line of True Steel Tempered GARDEN TOOLS ROUND POINTED SHOVELS \$1.75 4-TINE HAY FORKS \$1.95 3-TINE Long Handle CULTIVATORS \$1.20 4-TINE Long Handle CULTIVATORS \$1.20 4-TINE SPADING FORKS \$1.80

And Many Others to Choose From—None Sold to Dealers! 1/2"x8" and 1/2"x10" Foundation Bolts Complete—Bolt, Nut and Washer 8¢ Garden Hose Valves 85¢ All brass, 3/4" and 1/2". Inside Door Lock Complete Set . . . \$1.20 Pistol Handle, All-Metal Hack Saw \$1.15 Complete With Blade Quality 5-Sew Brooms \$1.40 WALL and FLOOR FURNACES GOOD STOCK OF Thermostats Water Heaters OF QUALITY

PLUMBING FIXTURES AND SUPPLIES WHITE TOILET SEATS...\$4.00

## Lomita Plumbing Shop

Plumbing, Furnaces, Day & Night Water Heat, Hardware, Electrical Supplies C. H. HUNT 24412 Narbonne Ave., Lomita Phone Lomita 676



## Welcome Newcomers!

Welcome newcomers! We're glad to have you with us. Whether you've come from a thousand miles away or just the next town, it will naturally be hard to get acquainted at first.

So the next time you need Groceries, Meats or Fresh Fruits and Vegetables, stop in at our store and let us meet you. We pride ourselves on quality and friendly service always.

## ALL POPULAR BRANDS OF CIGARETTES ON SALE ALL DAY SATURDAY!

SWIFT'S PINE SCENTED Soap Powder 25¢ 2-LB. BAG DEL MONTE Tomato Sauce 16¢ 3 8-OZ. CANS Fresh Fruit and Milk on Wheaties 2 pkgs. 21¢ Little Thin Pancakes—Perfect for Lunch! 28-OZ. PKG. SPERRY PANCAKE & Waffle Flour 19¢ For Southern Style Frying! BATTER MIX 2 FOR 35¢ Dixie Fry 8-oz. pkg. 13¢ "Super" in Potato Salad—Famous 10-OZ. JAR Durkee's Dressing 27¢ AMERICAN Velveeta Cheese (4 Pts.) 1/2-LB. PKG. 23¢ DEL MONTE WHOLE PEELLED APRICOTS In Heavy Syrup. NO. 2 1/2 GLASS 26¢

Helps Carry You Through the Morning! LARGE PKG. Albers Oats 27¢ Cereal Food and Oatmeal 2 PKGS. Gerber's Cereals 27¢ When It's Salt—Think of Morton's! 26-OZ. PKG. Morton's Salt 7¢ Quality Evaporated Milk 2 LARGE CANS Borden's Milk 19¢ For the Best Baking Results 25-OZ. SIZE K.C. Baking Powd. 21¢ Soy Sauce—Rich in Vegetable Vitamins! 6 1/2-OZ. BOTTLE Jan-U-Wine 18¢ For Making the Best Jams and Jellies! 3 PKGS. M.C.P. Pectin 25¢ KELLOGG'S—New Flavor Treat! PKG. Raisin Bran 11¢

SKIPPY PEANUT BUTTER 1-LB. JAR 31¢ RATH'S BLACKHAWK Luncheon Loaf (6 Pts.) 12-OZ. CAN 35¢

Deviated Meat 6¢ 9-OZ. JAR Prepared Mustard 9¢ 2 PKGS. Tenderoni 15¢ 5-LB. SACK 30¢ FLOUR 15¢

Big, Tender Peas (30 Pts.) NO. 2 CAN 15¢

CHOICE MEATS PLENTY OF FRESH BEEF, LAMB AND VEAL CHOICE (6 Pts.) LAMB LEGS 41¢ FRESH SLICED (3 Pts.) MINCED HAM 33¢ FRESH (3 Pts.) LIVER SAUSAGE 30¢ KNUTSEN'S FRESH COTTAGE CHEESE 24¢ SMOKED (3 Pts.) LIVER SAUSAGE 35¢

Plenty of BEER and WINE NOW AVAILABLE AT CARSONMART

# CARSONMART

1929-31 CARSON ST. TORRANCE

Personalized Social Stationery . . .

Pre-War Quality, Fine Quality Papers

Order Now for Christmas Ideal for Mailing Overseas

Torrance Herald

1336 El Prado

Torrance