



**TRANSFERRED** ... Harold C. Gansereit, fireman, 2/a, has completed boot camp at San Diego Naval Training Center and on 8-weeks course in basic engineering at Gulfport, Miss. He is now at Camp Shoemaker, awaiting a new assignment. A son of Mr. and Mrs. C. R. Gansereit, of 1315 W. 225th st., he was scheduled to graduate from Torrance high school with the class of summer, '45.

## Article Sent Here Tells of Atrocities

Robert C. (Red) Justice, of 1152 Maple st., Torrance, recently sent to his wife an article by Wade Jones, in which many of the German atrocities were revealed.

"The American troops rode herd on 200 Gardelegen male civilians who, at the order of American military authorities, were forced to exhume with their hands the bodies of some 700 PW's (prisoners of war) executed by Nazi troops just outside this town April 14.

"The Yank guards fingering their trigger and barely able to fight down an obvious urge, were thoroughly angered and revolted. If a worker halted for a single second, he was forcibly reminded by some of the German-speaking guards just what the score was, and why they were there."

"One man who spoke English protested this punishment to which Pfc. Walter Posigian, of Detroit, shouted, "Shut up and get digging. You're all responsible."

**OVERSEAS ENTERTAINMENT**  
Every major motion picture celebrity freed from military service by the new deferment for men over 30 enrolled within 24 hours in the Hollywood Victory committee for overseas entertainment.

## Gas Stickers On Cars Not Necessary

"War-time honored" A, B, and C gasoline stickers passed into history Monday when the windshield markers will no longer be required by OPA regulations.

The requirement was cancelled simultaneously with the effective date of the new gasoline rationing rules allowing certain B ration users an increase from 400 to 450 miles per month.

Only motorists whose occupational driving needs exceed the present B ceiling will be eligible for increases, and while the amounts of additional fuel granted will vary according to need, the total will in no case exceed the new ceiling, the official pointed out.

Other B ration holders, such as home-to-work drivers should not apply as their applications will have to be rejected.

Applicants should mail their filled out application forms rather than take them to their boards as receipt of applications by mail will speed the return of the coupons.

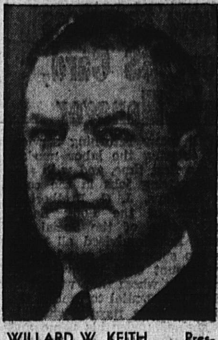
Motorists whose present B rations expire with 30 days after they apply will be issued not only sufficient coupons to supplement the remaining present ration, but will also be allotted their next three-months' ration, the official declared.

## Striped Bass Sportsmen Owe All to Marks

Sportsmen in California who enjoy striped bass fishing owe a debt of gratitude for their sport to Emmet L. Marks of Old Forge, New York state, for it was this man, who 63 years ago, brought the second planting of striped bass to California.

In 1882 Marks accompanied a shipment of 300 striped bass from Shrewsbury River, N. J., to California for planting in suitable waters. The records of the division of fish and game show that in 1941 over 111,000 anglers fished for striped bass in the general vicinity of Suisun Bay where this first shipment of fish was introduced, and that they took approximately 2,035,000 striped bass, all over 12 inches in length.

Marks recently celebrated his 89th birthday, and no doubt he reviews this particular bit of work with a feeling of satisfaction. Certainly the people of California and sportsmen in particular have a deep appreciation for the part he played in the early introduction of the striped bass into this state.



**WILLARD W. KEITH** ... President of Cosgrove & Co., newly appointed chairman of the public information committee of Los Angeles Area War Chest. Keith has enlisted advertising and publicity experts, the press, screen and radio to effectively tell the great War Chest story of services to the fighting forces, on the home front and for liberated and destitute Allies. All members of the committee are volunteers.

## Butyl Synthetic Rubber to Affect Tire Industry

Butyl synthetic rubber, easily produced from a plentiful supply of raw materials, may have a revolutionary effect on the tire building industry according to G. R. McNear, Pacific Coast Tire Manager of the United States Rubber Company which operates a synthetic rubber plant in Torrance.

Long ignored by rubber engineers in their preoccupation with other synthetic rubbers, they finally turned to it in a desperate effort to find some adequate substitute for natural rubber in making inner tubes. It was only after GR-S, the favored type of synthetic rubber, was found unsatisfactory that intensive experiments were made on tubes made from Butyl.

McNear said the result has been a tube which gives better all-around performance than the prewar natural rubber type. Butyl tubes hold air three times as long as rubber, and are three times as tear resistant.

In one of the many comparative tests, a Butyl and a natural rubber tube were punctured by nails, and the car upon which they were placed run ninety miles. At that point the rubber tube was flat while the Butyl tube still held 25 pounds air pressure.

"With these important points of superiority, undoubtedly Butyl will be generally used in inner tube manufacture after the war," McNear said.

## OBITUARY

**LONNIE MEERS**  
Funeral services for Lonnie Meers, 1407 Greenwood ave., who died June 7, 1945, at Sawtelle, will be conducted at 9 a.m. today in Stone & Myers chapel, with interment to follow in the Veterans cemetery at Sawtelle. Mr. Meers was a pipe fitter and was born in Alabama, June 17, 1886. He is survived by his widow, Emily Meers, of 1407 Greenwood ave., and a son, Lonnie Meers, Jr., in the service, also three sisters and three brothers residing elsewhere. The deceased was a veteran of World War I. The Rev. Paul Moore Wheeler will officiate at the service.

## LOW-COST TRANSPORTATION



**NEW 1945 WHIZZER BICYCLE MOTOR**  
This complete bicycle motor is ready to give you convenient transportation at lowest cost. 2 1/2 H.P., 4 Cycle. 5 to 40 M.P.H. 120 Mi. per gal. Only \$125, including all attachments. Come in for free demonstration now.

**TORRANCE CYCLE & FIX-IT SHOP**  
1341 EL PRADO  
Torrance  
Phone Torrance 382-J

## County Cost Up \$7.19 Per Capita In Past 10 Years

Los Angeles county's expenditures for general county government for 1943-44 averaged \$26.34 for each person in the county, compared with average expenditure of \$24.52 per person for 1942-43 and \$19.15 per person for 1934-35, ten years earlier, California taxpayers' association said today, making public its study of "Ten Years of County Spending."

Expenditures of the county for 1943-44 were as follows: general government, \$3.11 per capita; protection to persons and property, \$1.93; health and sanitation, \$0.84; highways and bridges, \$1.83; charities and corrections, \$1.78; recreation, education and miscellaneous, \$0.88; and debt payments, \$0.16 per capita.

Over the state as a whole, county expenditures for 1943-44 averaged \$26.70 per capita, compared with \$23.33 for 1942-43, and \$19.03 for 1934-35, the association found. State-wide average expenditures for 1943-44 by functions were as follows: general government, \$3.12; protection to persons and property, \$2.17; health and sanitation, \$0.75; highways and bridges,

\$2.37; charities and corrections, \$1.69; recreation, education and miscellaneous, \$0.90; and debt payments, \$0.46.

"Loss of county employees to war services and decreasing welfare needs should have brought county expenditures down," the association said. "However, in many communities generous war bonuses and increases in pay have wiped out the savings due to reduced numbers of personnel."

"Further pay rises, expansion of welfare provisions and plans for postwar construction, if adopted, will be the major reasons why local budgets may go up for 1945-46."

"Taxpayers should keep cause and effect foremost in their thinking on local budgets," the association declared. "More spending will mean higher local taxes."

Christian experience teaches faith in the right and disbelief in the wrong. It bids us work the more earnestly in times of persecution, because then our labor is more needed. — Mary Baker Eddy

## Redondo Beach Sand Restoration Asked in Bill

Assembly Bill No. 440, introduced by Assemblyman Glenn M. Anderson, which appropriates \$100,000 to be spent in restoring the public beach at Redondo Beach has now passed the Assembly and has been referred to the Senate Committee on Finance.

This measure was requested by the City of Redondo Beach, and if passed by the Senate and signed by the Governor, should go a long way toward straightening out the beach erosion problem at Redondo Beach. Anderson has requested an early hearing in the Senate Committee and those interested should write their Senator and urge his support.

Assembly Bill No. 55, also by Anderson, received the approval of the Assembly this last Friday. This measure extends the

expiration date of the 1943 appropriation of \$30,000 that is to be used on the same project at Redondo Beach.

If both of these measures become law, then with the assistance

of the County and local citizenry in securing the necessary matching funds, Redondo Beach should be well over the hump in solving its beach problems.

# Notice!

## HELP WANTED!!

### FOR ALL DEPARTMENTS

- PHARMACISTS • SALESGIRLS • CASHIERS
- STOCK BOYS • TOILETRY SALESGIRLS
- LIQUOR CLERKS • TOBACCO CLERKS

Personnel Director will interview Applicants on Friday, June 15, between 10:00 A.M. and 4:00 P.M. at 1315 Sartori, next to Levy's Dept. Store., Torrance.

(All applications kept strictly confidential.)

**MID-CITY DRUG STORES**

# SAFEWAY TEA TIME

When you're tired—it's time for tea; when you're hot—it's time for tea. Serve this delicious "pick-up" drink often ... both hot and cold. Select your favorite brand of tea at Safeway's money-saving low prices.

**CANterbury TEA** 23¢  
1/4-lb. 23¢  
Fancy black tea of excellent flavor. 1 1/2-oz. Pkg., 8¢; 1/2-pound Pkg., 43¢; 1-pound Pkg., 85¢.

**TREE TEA** 25¢  
1/4-lb. 25¢  
Fancy black tea. Enjoy it both hot and iced. Tea is one of the least expensive beverages!

**TENDERLEAF TEA** 24¢  
1/4-lb. 24¢  
Fancy black tea. Priced low at your neighborhood Safeway. Tea is easy to make—delicious!

### COFFEE VALUES

**Nob Hill Coffee** Rich blend 23¢  
**Airway Coffee** Ground to order 20¢  
**Edwards Coffee** Drip or 1-lb. regular 27¢  
**Iris Coffee** Regular or drip grind 1-lb. jar 33¢

### OTHER BEVERAGES

**Prune Juice** Sweetest or Sugarfree Quart 24¢  
**Hemo** Borden's Chocolate Flavored 1-lb. vitamin mix. Add to milk. 59¢  
**Chocolate Syrup** 16-oz. 22¢  
Everbliss Brand—for desserts, beverages.

### SPREADS

**Grape Jam** Tea Garden Brand 1-lb. jar 21¢  
**Peanut Butter** Sessions Brand 1-lb. jar 20¢  
Hormelized—6 smooth spreads!  
**Howdy** Peanut Butter Coarse grind 1-lb. jar 23¢

### CEREALS—MIXES

**Wheaties** 8-oz. 11¢ 12-oz. 15¢  
**Cream of Rice** 18-oz. 21¢  
**Zoom** Instantly prepared, fairly new breakfast cereal. 20-oz. 21¢  
**Honey Bran Mufmix** 7 1/2-oz. 9¢  
Honey Corn Mufmix, 8-oz. Pkg., 9¢  
**Gingerbread Mix** 14 1/2-oz. 18¢  
Dramedy Brand.

## MIGHTY 7th Loan

YOU...everybody... must buy more bonds

It costs money to move a War! Every American should help rush our fighting men and equipment to the Pacific...

**BUY MORE & BIGGER BONDS**

### FRUITS & VEGETABLES

Trained buyers select the choicest fresh produce—right in the fields. Speedy trucks rush these foods to Safeway. Make your own selections.

**FANCY SPINACH** FRESH, GREEN. 10 ounces PKG. 13¢  
Washed spinach—packed in Callophane packages.

**CANTALOUPE** LARGE SIZE 1-b. 8¢  
Sweet, ripe, thick-meated melons. Grown in Imperial Valley.

**GRAPEFRUIT** FANCY, ARIZONA 1-b. 9¢  
Sweet, juicy Arizona grapefruit. Serve halved at breakfast.

**YOUNG CARROTS** CRISP, FRESH 1-b. 6 1/2¢  
Tender carrots. Excellent to shred for salads. Tops off.

**VEGETABLES** PACKAGED FOR SALAD 12¢ PKG.  
Assorted fresh vegetables—shredded for salad. 7 1/2 ounces.

### TYPICAL LOW PRICES

70-80 Prunes Cello-Pack 3-lb. 35¢  
Macaroni Also Spaghetti 12-oz. 11¢  
Rancho Soups Globe "A1" Brand 10 1/2-oz. 17¢  
Baking Soda Tomato or Asparagus—No ration points required! 1-lb. 4¢  
One pound package, 8¢.

**Mrs. Wright's FRESH BREAD**  
Enjoy this NEW BLEND. Wheat or enriched white. 1-lb. loaf, 8¢. 1 1/2-lb. LOAF 12¢

### SOAP, CLEANSER, ETC.

Woodbury Toilet soap 3 bars 23¢  
Ivory Soap Personal size 2 bars 8¢  
Sierra Pine Toilet soap 2 bars 13¢  
Scotch Cleanser Triple Action 14-oz. 6¢  
Soil-Off Cleanses walls & woodwork safely. Quart 60¢  
No Rub Wax Del Monte 19-oz. Brand Pint 39¢  
Polish Old English Brand Scratch-removing 6-oz. bottle 23¢

**Don't overlook these "point free" Tomato Products!**

Save both blue and red points. These point-free sauces help make meat go further. Use them in preparation of meat, fish, poultry, macaroni, spaghetti, rice, beans, soups, etc.

**DEL MONTE** TOMATO SAUCE 8-oz. CAN 6¢  
Spanish style. A unique sauce, blended especially for cooking use. DOZEN CANS, 57¢.

**HUNT'S** SPANISH STYLE TOMATO SAUCE 8-oz. CAN 5¢  
Supreme quality—fancy Spanish Style Tomato Sauce. Excellent flavor. DOZEN CANS, 57¢.

**HOT SAUCE** GARDEN OF EDELWEISS OR TASTE TELLS 7 1/2-oz. CAN 4¢  
Tomato Hot Sauce for seasoning meats and vegetables. DOZEN CANS, 45¢.

## KNOW YOUR AMERICA!



He used the name of "Mark Twain," which was a directional cry of the river boat pilots. Like in Torrance the words "Meter-Check" means a checking account in the Torrance National Bank ... because so many people use this simple, inexpensive, practical way of taking care of their personal funds. You only pay 5 cents on each check you write and carry any balance you desire.

### ANSWER

from Oxford University.  
Samuel L. Clemens received an LL.D.  
(Turn Upside Down to Read)

"A FRIENDLY TORRANCE INSTITUTION"



**TORRANCE NATIONAL BANK**  
Torrance California

MEMBER OF FEDERAL DEPOSIT INSURANCE CORP.

2171 PACIFIC COAST HIGHWAY, LOMITA

1301 SARTORI AVENUE, TORRANCE