

Red Cross Drive Success Brings Praise to Lewis

Congratulations on the successful 1945 American Red Cross fund campaign during which he directed committees which turned in a total of 149.1 per cent of the quota have been received by Harry B. Lewis, executive secretary, Torrance Chamber of Commerce, from Paul K. Yost, chairman, geographic department of the Los Angeles chapter.

"A lot of hard work was done and all who contributed their services to the campaign can feel the satisfaction in the achievement of this substantial percentage," Yost told Lewis who turned in a total of almost \$50,000 against a quota of only \$32,500.

"I have the pleasure of expressing to you on behalf of the American Red Cross hearty congratulations on your successful record."

READ OUR WANT ADS

Dr. M. Phil. Moore
CHIROPRACTOR

Physiotherapy and X-Ray
1323 SARTORI AVE.
Phone Torrance 482

MRS. SHERK TELLS STORY OF COMMANDING FILIPINO TROOPS BEFORE CAPTURE

Mickie Sherk, a graduate of Torrance High school with the class of '28, spent ten years in the Philippines, three of which were as a Japanese prisoner of war. Highlights of the Japanese invasion of the Philippines are told here as related recently to the Kiwanis Club:

"At 4:30 in the morning of Dec. 12, 1941, I was awakened by Filipinos running about outside. The room boy at the Mayan Hotel told me that soldiers had landed on the beaches and they thought they were Japanese. My first desire was to send a telegram to the headquarters staff of the United States Army, telling them the Japanese had attacked Legaspi. This necessitated a 30-mile walk to Maga with one Filipino boy. The boy led me through the leper colony, over the hills to Ligao. On the walk through the hills we picked up 400 Filipino Army boys completely armed but without officers. These boys didn't know where to go so I kept them with me.

"I commanded three busses. We rode to Pili, an Army barracks, which was deserted ex-

cept for supplies and equipment. These boys wanted to stay at Pili and fight so we stayed. I rode into the nearest town which was Naga and sent a telegram to a friend on the headquarters staff advising them that we were at Pili, fully equipped and ready to make a stand. Immediate answer to the telegram ordered me to retreat with all men and equipment, any available transportation, and travel only after dark.

"Men and equipment were brought to Naga in preparation for leaving and with three Filipinos I went back to Pili to blow up the railroad bridge. It took me 12 hours to blow up the bridge, from 3 in the afternoon to 3 in the morning. When I got to Naga at 3 a.m., my army had retreated to Lucena as per instructions.

"There was no road to Lucena, therefore, I had to walk through the hills in the company of a young mining engineer. This was a 30-mile walk without food and in the pouring rain. Just as we started to hike, we were stopped by an American sergeant who informed me the colonel was hunting me as my troops had gotten through and I was not among them.

"The sergeant belonged to a communications group who radioed ahead and said we were on our way through. The colonel had a car for us at Sumalong which took us to Lucena where I slept in the barracks with the soldiers until the next morning when we left for Manila. The trip from Legaspi to Manila took me six days.

"In Manila, my husband frantically awaited word of my whereabouts. Soon after I returned, he was commissioned in the United States Army as a first lieutenant, attached to the Engineering Corps and sent to Bataan. After his departure for Bataan on Dec. 31, 1941, and his subsequent internment as a prisoner of war, my only means of communication with him was the underground. He is now a Japanese prisoner of war, presumably at Formosa.

"We who have known defeat, humiliation, starvation and death realize just how much having one's country behind one means. This realization brings to us the great necessity to put forth every effort to keep others from knowing that same defeat and that same humiliation. One of the best means we here in the safety of these United States can take to assure this ultimate goal is to purchase more and more bonds and to donate our blood to the Red Cross for plasma."

American Cancer Society Still Takes Donations

Queen Walker Broadman, Los Angeles County commander of the American Cancer Society said that V-E day almost entirely blacked out the American Cancer Society Campaign.

He stated that less than 30% of the quota of \$146,355 for Los Angeles County has been raised to date.

"To give to conquer cancer, send in your donations," he said.

PHARMACIST'S MATE, NOW
Joseph P. Bay has been advanced to Chief Pharmacist's Mate at a South Pacific base. He is a son of Mr. and Mrs. J. C. Bay of 2003 Gramercy ave. His wife, Nadine, is Classified Advertising Manager at Torrance Herald.

In all instances where our experience of the past has been extensive and uniform, our judgment as to the future amounts to moral certainty.—Beattie

Everett Serves At Amphibious Base in England

William M. Everett, 28, Storekeeper 2/c, a son of Mr. and Mrs. William L. Everett, of 1004 Arlington ave., is serving at the U. S. Navy Amphibious Base, Portland, England, in its engineering and repair division.

For months on end Everett and several hundred other land-based blue jackets have worked around the clock to keep the ships in shape so that all Navy

commitments could be met. Their jobs included everything from altering a ship's conning tower to changing propellers on small boats.

Everett joined the Navy in September, '43 and was advanced to his present rating in February. A graduate of Torrance high school he was a Columbia Steel Company employee before he entered service.

HAS MEDICAL DISCHARGE

Sgt. Lewis W. Day, A.A.F., returned recently from more than two years' Pacific duty having received a medical discharge. His wife, the former Mary Roberts, joined him for a recent week's visit with friends in Fresno, their former home. They are at home at 1617 Arlington ave.

'PERCE STRINGS' by TOM LOVELADY



Here is the dope on his Father's Day tie—

PENNEY'S
J. C. PENNEY CO., INC.

TORRANCE

Follow his taste in the kind that you buy!

Some like 'em noisy and some like 'em neat

Penney's selection is vast and complete!



BRACE UP YOUR

Summer Wardrobe!

NEAT SHIRTS HELP YOUR PRESTIGE!
TOWNCRAFT DRESS SHIRTS

Employees who rate raises always look neat! They prefer Sanforized cotton shirts with smooth tailoring. Ties That Promote Office Harmony . . . 98c

OUR SPORT SHIRTS ARE STANDBYS! 2.98

A wide assortment of washable cottons.

YOUR STRAW HAT IS AIRY 2.98

Open weaves, blocked to a flattering shape. GOOD LEATHER 98c

WITHSTANDS HEAT 98c

Choose a fancy western belt, nicely tooled. SUSPENDERS—YOUR 98c

SOLE SUPPORT 2.98

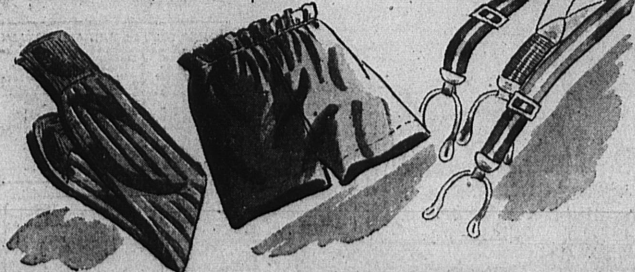
They're adjustable, with features you prefer.

SWIM TRUNKS ARE A "MUST"! 2.98

Lustrous rayon satin faced twill with pocket. LOOK TO YOUR SOCKS 1.00

FOR COMFORT!—3 for

Dark mercerized cottons, ribbed and plain.



a NEW TIE for Father

Cascading Prints

Rayon Twill

1.49

A heavy rayon twill makes a firm knot and a rich, supple draping to the rest of the tie. The prints come tumbling down in multicolor! Water ripples, shells and beautiful Birds of Paradise! Rayon faced.

a NEW TIE for Father

Colorful Prints on Rayon Satin

98c

Firm, smoothie rayon satin, printed in bright colors. A tie so cheerful as these, couldn't fail to please Father! Generous large shape. Wool lining in the knotting area for a good knot!

BUY BONDS!

Don't throw them away!
15¢ PAID



FOR EACH WORN OUT (Standard Size)

GOLF BALL
TURNED IN AT SONTAG

For Extra Change For New Golf Balls

To assure you good, live golf balls for the duration, turn in your used ones now for renewal. War prohibits the manufacture of new golf balls; so all you'll have for the duration are the ones that you save!

1269 SARTORI
TORRANCE

Sontag
THE FINER DRUG STORES

CAN YOU SEE AHEAD?

There is no way to actually do it... BUT the smart man who has insurance protection does not HAVE TO LOOK AHEAD! He knows his car and home is fully protected against loss by J. Stanley King.

"WHERE INSURANCE IS NOT A SIDELINE"

J. STANLEY KING
TORRANCE GENERAL INSURANCE AGENCY
1407 Marcelina Phone 1300

NEW ARRIVALS — READY FOR SELLING FRIDAY MORNING AT 9 A.M.

WOMEN'S RAYON PANTIES 49c

With full elastic backs. Adanna brand.

WOMEN'S COTTON BROADCLOTH PAJAMAS . . . 1.72

Special value.

HEAVY COTTON COLONIAL BEDSPREADS 4.98

Size 86x105. Colors rose and blue.

CUB PANTS 1.95

WOMEN'S HEAVY RAYON SLIPS 82c

Size 32, 34, 36, 38 and 40.

SIZE 36x78 IVORY SHADE CUSHION DOT PANELS . . . 98c

36-INCH WIDTH PRINTED RAYON PRINTS . . 59c

New Summer colors.

PAIR MEN'S WORK SOCKS 19c

Fine weave, soft texture, full length. Black only.

56x78 IVORY COLOR BEDROOM CURTAINS 4.50

Extra width, cushion dots with tie backs.

56x78 IVORY COLOR BEDROOM CURTAINS 1.65

With pin dots.

100 PAIRS WOMEN'S RATION FREE SHOES 1.98

Multi-color roulette.

HEAVY COLORED TURKISH WASH CLOTHS . . . 12c

TOWNCRAFT DE LUXE MEN'S DRESS SHIRTS 1.98

In stripes and plain colors. Sanforized shrunk. Ideal for Father's Day gifts!

WHITE SHEET BLANKETS . . . 1.45

Supply limited. (No phone orders, no lay-aways.)