

## Local Man Wins Title as Best Accordion Player

Pfc. Julio Giulietti, son of Mrs. Louise Giulietti of 156 W. 20th, New York City, was chosen the best accordion player in the Ninth Service Command live music contest last week. He scored 94 out of a possible 100 points for his playing of "Dark Eyes," his favorite selection and "Pennsylvania Polka."

Pfc. Giulietti, who has been stationed at Camp Anza, an Army Transportation Corps installation, since June 1943, has made numerous appearances with the special services entertainment staff at war bond shows, Red Cross drives and camp shows.

At present his wife, Anita, is living at 1210 El Prado, Torrance, Calif.

A crowd is not company, and faces are but a gallery of pictures.

—Francis Bacon

## Brumpton on Missing List

Lieut. Robert Brumpton, U.S. Navy, son of Mrs. Marcella Brumpton of Los Angeles, has been declared missing in action, according to word received by Mrs. Brumpton from the War Department.

Lieutenant Brumpton lived in Lomita for many years, graduating from Narbonne High school in 1933. He enlisted in the Navy ten years ago.

His wife lives in Berkeley.

### SUPERVISORS UP IN AIR

County supervisors soared above Los Angeles city and county in a blimp, supplied by the Santa Ana naval air base, seeking to determine sources from which smoke and fumes were rising to pollute the air.

Love for mankind is the elevator of the human race; it demonstrates Truth and reflects divine Love.

—Mary Baker Eddy

## Anderson Is Awarded Order Of Purple Heart

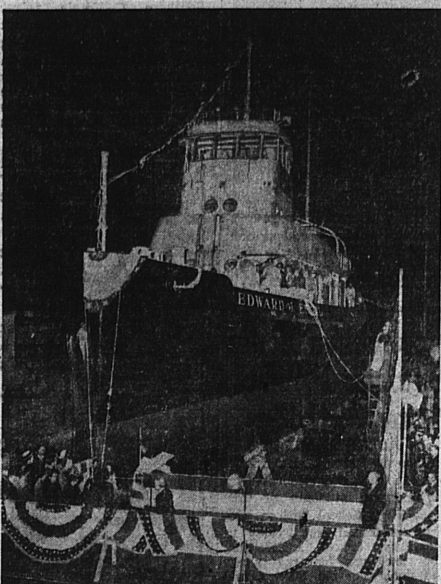
Pfc. Raymond D. Anderson, Co. A, 128th Infantry, fighting in the Pacific was wounded on March 27, 1945, while in combat with the enemy on Luzon and was awarded the Purple Heart medal.

He now is in a hospital, but is reported doing fine, and expects to be back with his company before long. His wife and two daughters have lived at 1144 Maple st., Hammerton Tract, since coming to California in 1939.

### APPAREL BUSINESS

Pointing out that the apparel industry of California is the second largest in the United States, Lyman Thompson, managing director of the Associated Apparel Manufacturers, predicted a \$30 million dollar business for this year.

## New Santa Fe Tugboat Launched



NEWPORT HARBOR, Calif.—One of the largest vessels of its kind ever built, the new streamlined Santa Fe Railway tugboat EDWARD J. ENGEL is shown during night launching ceremonies held at the small boats division of Consolidated Steel Corp. here on April 27. Of all-metal construction, 150 feet in length and powered by a 1200-horsepower steam engine, the 500-ton deadweight tug is named for Edward J. Engel of Pasadena, retired president of the Santa Fe. It will be used by the railroad in ferry service on San Francisco Bay. Superstructure of the vessel will be painted to resemble the Super Chief and other Santa Fe streamlined trains.

## Breaking In of Synthetic Tires Is Necessary

Torrance and Lomita district motorists are warned they may have to hold down passenger car travel to a minimum for some time to come. New passenger cars, ODT points out, will not be available in any normal numbers until at least a year or more after the fall of Germany.

Meanwhile, local motorists, commercial vehicle drivers and farmers are told how to use synthetic rubber tires which are known to be less able to withstand overloading, overspeeding, under-inflation than natural rubber tires.

ODT says to "break-in" synthetic tires carefully for at least one month, properly inflated under a light load and at road speeds to 35 miles per hour or less. After the "breaking-in" period, tires should be rotated to more heavily loaded wheels and mated for use. Here are reasons for this advice.

First, synthetic rubber becomes much hotter when rolling and the strength of the synthetic tire casing is greatly reduced when it is continuously overheated. Summer driving will accentuate these hazards. Second, synthetic tire rubber stretches less easily than natural rubber, and if new synthetic rubber tires are not broken in carefully, cracks may develop in the tread rubber, causing the synthetic tire to blow out or otherwise fail.

It is good discretion not to make too much of any man at the first, because one cannot hold out in that proportion.

—Bacon

## GR-S Synthetic Rubber Future Promise Bright

GR-S synthetic rubber in liquid form, now in production at the local synthetic plant operated by the United States Rubber Company, promises to be a substantial industry after the war according to local officials.

While it has been of major importance in strengthening cord fabric for synthetic passenger tires, the discovery of a way to coat the latex onto metal has opened new industrial fields.

This method of insulating and coating metals even of intricate shapes without the use of molds and dies, already has found widespread application. The technique has been used successfully to apply the rubber latex to filter press plates, rayon mass tubes, airplane and auto steering wheels, marine lamp guards, submarine and naval equipment, perforated plates for airplane cooling systems, grab rails, nuts, bolts and hundreds of other items.

The rubber covering eliminates the effects of abrasion and rust as well as acid and alkali corrosion. It also provides a cushioned and non-slip surface for hard metal. The application has made possible replacement of valuable war machine parts no longer available. Without it much of the machinery used in the manufacture of vital war products would have been rendered useless.

In addition to the resistance which the protective rubber coating provides, it has been invaluable wherever the possibility

## Posture Topic Again Discussed By Dr. Swartout

H. O. Swartout, M.D., Dr. P.H. Los Angeles County Health Officer

The years of childhood and youth are the ones that count most insofar as the achievement of good posture is concerned. However, this is not to say that poor posture in an adult cannot be corrected or at least improved.

To correct poor posture one must first know what constitutes good posture; that is, head held high, chin in, chest up and forward, shoulders back, lower back somewhat flattened with abdomen in, legs straight, and feet parallel with the weight of the body resting mostly on the balls of the feet.

Most everyone has in his school days participated in physical education classes. Many of these class exercises designed to strengthen muscles of the neck, shoulders, back, abdomen, and limbs can be recalled, and what is more important can be used daily to help maintain or achieve good posture and to give muscles tone and strength.

If a person is interested enough in his health to initiate and faithfully adhere to a five-to-ten-minute daily exercise period, he will find that more detailed corrective exercises can be easily found in health magazines, libraries, or in pamphlets furnished by official or volunteer health agencies.

## Labor Unions Making Rent Investigation

Hundreds of violations of OPA rent regulations in the Los Angeles area are likely to be brought to light as the result of the current rent survey being conducted by labor organizations within their membership.

This is the belief expressed today by officials of both unions and the Federal rent control setup, here, according to Helen Daggett, OPA labor liaison officer.

Distribution of thousands of questionnaires to all union members through shop stewards and labor-management committees in plants and shops is well under way, Miss Daggett stated, and with their return in completed form will be turned over to the OPA district rent office.

According to Ben C. Koepke, OPA district rent executive, the returned forms will be subjected to close scrutiny and, where violations are indicated, appropriate action by the rent compliance and enforcement divisions will be taken.

That the survey will bear fruit especially in disclosing non-registration of rental property by landlords is indicated, officials believe, by the fact that spot checks in the past show that a large percentage of rental units have remained unregistered.

Union officers are stressing to their members the importance of expediting the completion and return of the survey forms.

No man can be provident of his time, who is not prudent in the choice of his company.

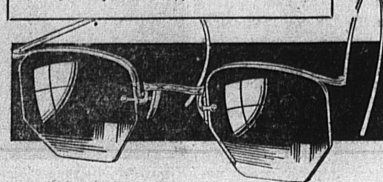
—Jeremy Taylor

ity of static or spark would cause either explosion, fire or shock.

## DR. G. E. COSGROVE

OPTOMETRIST  
FORMERLY M. L. KEMP

Phone Today for an Appointment Tomorrow



It is our policy and desire to completely satisfy every patient with quality, service and prices same as prewar days.

"THE EYE ONLY"

Lenses Duplicated Eyes Examined  
135 S. Pacific Ave. Phone 6045  
Redondo Beach

PROPER CARE  
MEANS LONGER WEAR!



Summer  
**LUBRICANTS**  
BY FIRESTONE  
TRAINED EXPERT

To Help Your Car Run

Smoother... Longer... We Will

1. Flush transmission and differential of old grease.
2. Fill with correct weight lubricants. (Limit 6 lbs.)
3. Give complete chassis lubrication.
4. Check front wheel bearings.
5. Test the battery with hydrometer.

We are Headquarters for Tire, Battery, Spark Plug, Lubrication and Brake Lining Service

**Firestone**

We Have Plenty Of

GRADE III

**TIRES**

6.00x16 — 6.50x16 — 7.00x16

NO  
CERTIFICATE  
REQUIRED

**670**  
6.00x16  
RECAPPING

OTHER SIZES IN PROPORTION

**We Loan You Tires While We Recap Yours**

6 Reasons Why You Get a Better Job with Firestone Factory-Control Methods

### (1) THOROUGH INSPECTION

Before any work is done, your tire is thoroughly inspected. Any weak spots or nail holes are marked for repair.

### (2) EXPERT REPAIRING

When repairs are needed, a trained specialist using latest approved methods builds up weakened or broken areas.

### (3) CONTROLLED BUFFING

The worn tread is precision-buffed for perfect balance. Only a minimum of rubber is removed to provide proper surface.

### (4) ACCURATE TREADING

New tread rubber of highest quality is carefully applied to the buffed tread base. Care and precision insure a well balanced tire.

### (5) SCIENTIFIC CURING

Careful scientific control of time and temperatures assures proper toughness and maximum wearing quality of the recap.

### (6) FINAL INSPECTION

Complete final examination carefully inspects inside and outside of tire. Note sharp, clear tread, ready for thousands of additional miles.

WORKMANSHIP AND MATERIALS GUARANTEED

See Us for the Finest **TRUCK & TRACTOR TIRE**  
RECAPPING WITH THE BEST MATERIAL  
AND WORKMANSHIP **GUARANTEED**

**Firestone**

MARCELINA AT CRAVENS - - TORRANCE

No Ration Certificate Required  
Prompt Service Always